

An edition of  
**episcopallife**

APRIL 2008

\*\*\*\*\*  
#0023 7105 1164 8037#  
227159 #051-5397 519 P1  
HAWAII HISTORICAL SOCIETY  
560 KAWAIAHAWO ST  
HONOLULU HI 96813-5023

HAWAIIAN HISTORICAL SOCIETY  
LIBRARY

|||||

# Hawaiian Church Chronicle

Volume 19, Number 4

THE NEWSPAPER OF THE EPISCOPAL DIOCESE OF HAWAII

## A joyous camp celebration



PHOTO BY THE REV. DAVID H. BLANCHETT, WASILLA, ALASKA

Camp Mokule'ia's familiar lagoon-like beach area was used by young and old alike, for both swimming and kayaking, during the camp's 60th anniversary celebration.

## Camp Mokule'ia celebrates 60 years of food, fellowship, fun

By Willis H.A. Moore

More than 300 people turned out on the Presidents' Day holiday, Monday, February 18, to celebrate the 60th anniversary of Camp Mokule'ia on O'ahu's North Shore. It was the first "birthday party" for the Camp in 10 years.

In 1947, Missionary Bishop Harry

Kennedy, using \$40,000.00 from the Episcopal Church, purchased "Camp Mokule'ia" for the use of the then-Missionary District of Honolulu. Dr. Joseph Lucas, a plantation doctor for the Dole Pineapple Co. and a pillar at St Stephen's in the Fields Episcopal Church in nearby Wahiawa, devoted much time to the early day campers as their "camp doctor."

Today, his son, Bill Lucas, is chair of the

board of directors for Camp Mokule'ia. Lucas and camp business manager Debbie Alameida, planned a full day of remembrance, blessing, and renewal at the Camp. Some arrived the day before, to take advantage of discount lodging rates offered to all Episcopal Church members for the weekend, in honor of the celebration.

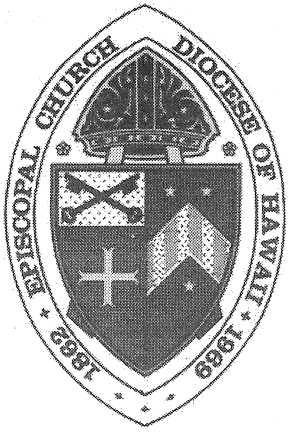
The Rev. Walter Stevens, Vicar of St. Stephen's, led an informal Eucharist to be-

gin the day. The gospel was read in Pidgin English, from *Da Jesus Book*, by the Rev. Frank Chun, senior active priest in the Diocese and one of the contributors to this Pidgin translation of the New Testament. The "sermon" was a sharing from a number of the 50 people worshipping at the beach that morning.

Continued on Page E

266-305  
N313





## Hawaiian Church Chronicle

PUBLISHED CONTINUOUSLY SINCE 1901

The Rt. Rev. Robert L. Fitzpatrick  
Bishop

229 Queen Emma Square  
Honolulu, Hawai'i 96813-2304  
Telephone: (808) 536-7776  
Fax: (808) 538-7194

Volume 19, Number 4

Episcopal Life ISSN 1050-0057  
USPS# 177-940 is published monthly  
by the Domestic and Foreign  
Missionary Society, Inc., 815  
Second Ave., New York, NY  
10017. Periodicals postage paid  
in New York, N.Y., and  
additional mailing offices.

**POSTMASTER:** Send change of  
address to Episcopal Life, P.O. Box  
2050, Voorhees, NJ 08043-8000.

**READERS:** To change subscription  
address, contact:

Episcopal Life Circulation Department  
P.O. Box 2050  
Voorhees, NJ 08043-8000  
email: [elife@aflwebprinting.com](mailto:elife@aflwebprinting.com)  
1-800-374-9510

The Rev. Canon Liz Beasley  
Editor

Elizabeth House  
Design/Layout

The Hawaiian Church Chronicle is the  
official news publication of the Episcopal  
Diocese of Hawai'i. All policy, editorial  
and administrative decisions are under  
the direction of the editor in consultation  
with the Bishop.

The Chronicle welcomes suggestions, story  
ideas, comments and opinions from its  
readers. Send articles, letters, news and  
photographs to:

The Rev. Canon Liz Beasley,  
Editor, Hawaiian Church Chronicle,  
229 Queen Emma Square, Honolulu, HI  
96813-2304.  
E-mail: [lbeasley@episcopalhawaii.org](mailto:lbeasley@episcopalhawaii.org)  
Telephone: (808) 536-7776 ext. 326

The Chronicle does not assume responsibility for  
the return of photographs or manuscripts.

[www.episcopalhawaii.org](http://www.episcopalhawaii.org)

**June issue deadline:  
April 25**

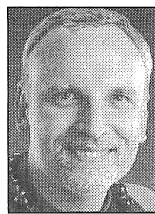
# Canons, BCP shape our common life

*Aloha i Akua,*

As I write this article, I have just returned from the spring House of Bishops meeting in Texas. Most of the meeting was spent preparing for this summer's Lambeth Conference in England and various continuing education activities. There was very little formal action.

Two events shaped the last few days of the meeting: (1) Word was received from the Archbishop of Canterbury that the Bishop of New Hampshire would not be invited to the Lambeth Conference in any formal way. (2) The House acted to depose two bishops who had separated themselves from the Episcopal Church for another jurisdiction of the Anglican Communion without resigning. These events were not surprising though tragic. The first will play out over the next few months as other opportunities for conversation in the Communion take place. The second marks the differing understandings of conscience and opinion within our Church.

My own prayer and rumination as I flew back from Texas has been marked by a reflection on the nature of order in our common life as a Church. A year ago when I was ordained a bishop, I declared in writing that "I do believe the Holy Scriptures of the Old and New Testaments to be the Word of God, and to contain all things necessary for salvation" and that I would "engage to conform to the doctrine, discipline, and worship of the Episcopal Church." Now that I have been your bishop for a year, I need to remind the Diocese of my expectations regarding our life together. These are shaped by my promises. The *Book of Common Prayer*



**The Right Rev.  
Robert L. Fitzpatrick**  
BISHOP OF HAWAII

(and other authorized worship resources) and the Constitution and Canons of the Episcopal Church are the container that hold together our common life as The Episcopal Church and as the Diocese of Hawai'i. There are times it is helpful to reflect on the bounds of our common life. The following come from questions regarding our common life and my replies.

As the followers of the Risen Christ and members of the Episcopal Church, we have bound ourselves to a shared discipline to govern our common life. We do this not in a legalist or oppressive way, but with humility and mutual accountability. Thank you for keeping me in your prayers.

*Aloha i Iesu Kristo ko makou Haku,  
+ Bob  
Keali'ikoaoekua*

**Editor's note:** What follows is a synopsis of the points made in a document outlining the Bishop's expectations, commonly called a "Customary." He wrote it soon after becoming Bishop a year ago, sent it to all clergy, and also discussed it in a meeting last year with the College of Presbyters. The full text of Bishop Fitzpatrick's Customary, which includes a fuller explanation of these points, is posted on the Bishop's Page on the diocesan Web site, or by going directly



## New responsibilities, new challenges

This will be my last column as the Editor of the *Hawaiian Church Chronicle*, and as the "communications person" in the Office of the Bishop. As of April 1, my responsibilities will be shifting.

A year ago when Bishop Robert Fitzpatrick took office, he kept the same staff but changed some of the responsibilities. At that time, I changed from the half-time Communications Officer to the full-time "Canon for Communications and Ministry Development."

In the past year, two people have left the staff: first, Edith Vargas, our MIT Specialist (translated: our computer and technical person) and as of March 31, Tiare Ono, the Canon Administrator. The changes have caused us to rethink the needs in the Office and in the Diocese. So now we have a new employee, an Office Manager /Events Coordinator (see story, page C).

Bishop Fitzpatrick received input that we needed someone to focus on congregational development: how to build healthy and vital congregations. So I am taking on these responsibilities. I will continue with the "ministry development" responsibilities I was already doing, so now I will be the Canon for Ministry Development.

We also recognized that we needed to get more serious about communications. So as of this writing, we are in a search for a Communications and Technical Officer.



**The Rev. Liz Beasley**  
CHRONICLE EDITOR

This position will be full time, combining my former communications responsibilities with Edith's tasks of being technical support for the Office. We decided these responsibilities are connected: communications, as it needs to be done, is more and more a technical enterprise. Someone not only has to be able to write well, but also must have facility with computers and software and digital cameras. And Edith got us into such good shape technologically that she left an easier job for her successor: a mark of success in any position.

We also would like to move in the direction of video. A large portion of the diocesan budget is devoted to travel between the islands. So we have talked about holding at least some meetings via computer, using webcams. In addition, from time to time the idea arises to create videos: for example, a message from the Bishop, best worship practices around the Diocese, and other ideas. And finally, we have had our Web site for about four years, and it is time for a retooling. The new communications person will help us move in these directions.

## BISHOP'S VISITATIONS

Bishop Robert Fitzpatrick visits all congregations in the Diocese each year, every other year on a Sunday and in the alternate years on a weekday evening during the same week.

### April

Weekend of April 5	Regional Confirmation Windward O'ahu
Weekend of April 12	Regional Confirmation Kaua'i
Weekend of April 19	Regional Confirmation Central O'ahu
Weekend of April 26	Regional Confirmation West O'ahu

### May

Weekend of May 3	Regional Confirmation Maui
Weekend of May 10	Regional Confirmation East O'ahu
May 18	Holy Cross, Kahuku
Week of May 18	St. Stephen's, Wahiawa

Bishop Fitzpatrick does not have regular visitations scheduled during June, July or August

to: [www.episcopalhawaii.org/ViewArticle.php?key=869](http://www.episcopalhawaii.org/ViewArticle.php?key=869).

## rites and liturgies

The only liturgies that the Bishop authorizes for public worship are those approved by the General Convention of the

**Continued on Page G**

# Bishop's office welcomes new employee

Lani Kaaihue will serve as manager, events coordinator

On March 10, the Office of the Bishop welcomed its newest employee: Lani Kaaihue. Lani joins the staff as the Office Manager /Events Coordinator. Her start date allowed her to overlap with Tiare Ono, the retiring Canon Administrator, for about two weeks in order to "learn the ropes" of the office.

This new position grew out of several needs: someone to oversee administrative details in the office, with Tiare retiring; someone to coordinate the logistical details of diocesan youth events, such as Happening and New Beginnings; and someone to manage the details of the annual meeting of the diocesan Convention. These needs, plus others, were combined into one administrative position, which Lani fits "to a T."

Lani comes to the Office of the Bishop with experience in office management, having most recently set up and run the office of a surgeon in Honolulu. She also has 15 years experience in bank-



Lani Kaaihue, a member of St. Elizabeth's, learns all the things that are on her computer during her first week of work as Office Manager and Events Coordinator in the Office of the Bishop.

PHOTO BY THE REV. CANON LIZ BEASLEY

ing. She is a member of St. Elizabeth's, Honolulu (Palama). As a church leader she recently completed a six-week lay chaplaincy training program through Pacific

Health Ministries.

So what does "Events Coordinator" mean? Lani will oversee the logistical details for all diocesan events, not parish-based ones.

She will (as necessary, depending on the event) arrange for reserving the venue, providing food, receiving registrations, booking travel, and reimbursing expenses.

She will not be in charge of any of the content of the programs.

For example, she will collect registration and other necessary forms for a youth retreat, and book space at the Camp, but the Family, Young Adult, and Youth Department of Diocesan Council, through one of its commissions, is responsible for the theme, the staff, and the program of the retreat.

She will also be arranging for the Preventing Sexual Misconduct training events, but Canon Liz Beasley and Peter Pereira, in consultation with the Bishop, will choose the type of training offered and the facilitator(s).

One of Tiare's duties was property management. This will not be one of Lani's responsibilities. The Bishop has emphasized that the role of the Office of the Bishop — as well as that of the Diocesan Council and its Commissions — is to help strengthen congregations. Managing diocesan property does not meet that criterion.

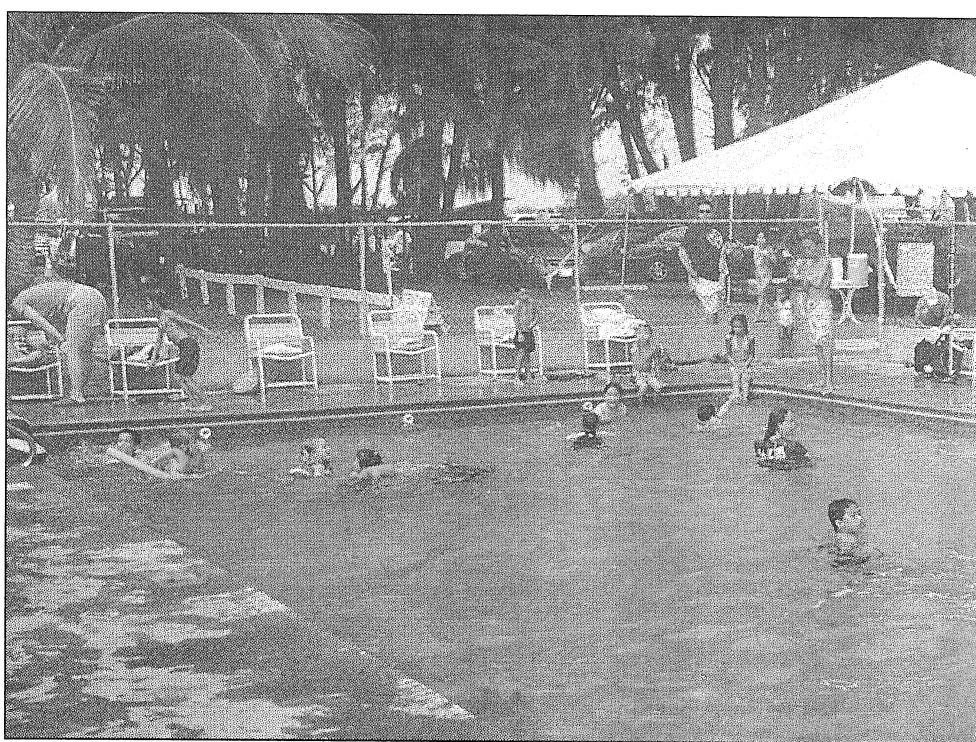
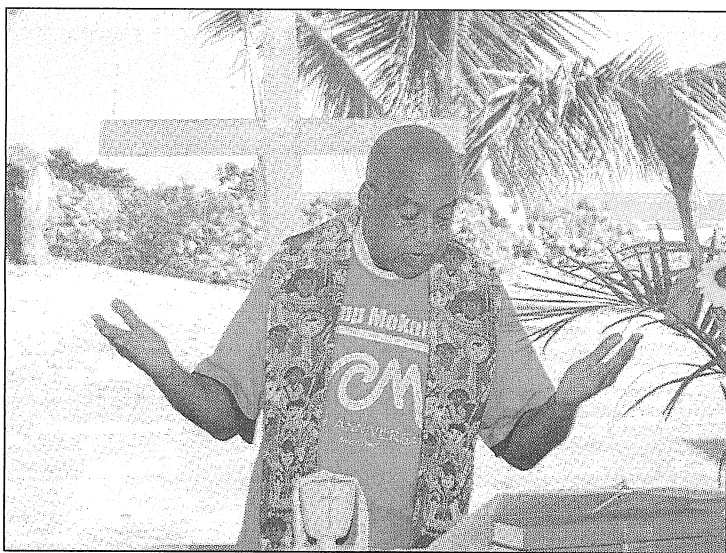
Lani can be reached at phone number 536-7776 (Neighbor Islands: 800-522-8418), ext. 309, or by email at lkaaihue@episcopalhawaii.org.

## Who does what in the Office of the Bishop

With job responsibilities and titles shifting, with some staff leaving and others joining, whom should you call about what? Below is a list of each person's basic responsibilities:

Person	Title	Responsibilities
Marie Elesarke	Bishop's Secretary	Anything pertaining to Bishop Fitzpatrick: <ul style="list-style-type: none"><li>• Appointments with the Bishop</li><li>• Bishop's visitations</li><li>• Questions for the Bishop</li></ul>
Lani Kaaihue	Office Manager/ Events Coordinator	<ul style="list-style-type: none"><li>• Coordinate logistics of diocesan events</li><li>• Manage the Office of the Bishop</li></ul>
The Rev. Canon Liz Beasley	Canon for Ministry Development	<ul style="list-style-type: none"><li>• Deployment</li><li>• Congregational development (vestries &amp; bishop's committees, Mutual Ministry Reflections, church growth, church dynamics)</li><li>• Liaison to Continuing Education Commission</li><li>• Liaison to Commission on Ministry (ordination process, licensed ministries, discernment for ministry)</li><li>• Ministry development</li></ul>
Peter Pereira	Treasurer	Anything related to money: <ul style="list-style-type: none"><li>• Insurance (property, liability, risk management)</li><li>• Property (purchase, sale contracts, leases, loans)</li><li>• Compensation</li><li>• Budgeting</li><li>• Planned giving</li><li>• Taxes</li><li>• Pension &amp; retirement questions</li><li>• Investments</li><li>• Audits</li><li>• Accounting &amp; church treasurer training</li></ul>
Nancy Minuth	Bookkeeper	<ul style="list-style-type: none"><li>• Cuts checks</li><li>• Maintains the books</li><li>• Arranges conference calls</li><li>• Orders office supplies</li><li>• Medical</li><li>• Neighbor Island travel</li></ul>
[In search]	Communications and Technical Officer	<ul style="list-style-type: none"><li>• Editor of <i>Hawaiian Church Chronicle</i></li><li>• Maintains diocesan Web site</li><li>• Writes and sends E-News</li><li>• Technical support to Office of the Bishop</li></ul>





More than 300 people joined in a 60th anniversary celebration of Camp Mokule'ia on February 24.

## Camp Mokule'ia to be

By Bill Lucas

PRESIDENT, CAMP MOKULE'IA BOARD OF DIRECTORS

Camp Mokule'ia had a successful year of fundraising in 2007, ending with an announcement that it had been awarded a \$250,000 grant from the Frear Eleemosynary Trust for renovation of the Lodge and the interior of the Dining Hall, and possibly construction of a plaza between the Lodge and Dining Hall. Camp Office Manager, Debbie Alameida, and I joyfully received the check from trust representative Paula Boyce (center in photo at left) on March 11.

First Hawaiian Foundation started 2007 by giving us \$15,000, followed by the G.N. Wilcox Trust grant of \$50,000 for renovation of the road house.

Actus Lend Lease made Camp Mokule'ia

the beneficiary of their community work day, which resulted in a series of projects, including the renovation of the road house, painting of all three cabins, construction of outdoor showers between the cabins, and installation of a concrete platform fronting the middle cabin. They also helped us start the clearing of the Sutton land, the 10 acres donated to the Camp, preparing to bringing that property into use. The value of the work day was estimated at \$95,000. It made both television and print.

A&B Foundation gave the camp \$5,000, followed by a \$50,000 grant from the Ather-ton Family Foundation, payable over two years. The year concluded with the announcement of the Frear \$250,000 grant.

In preparation for the final move of the office into the road house, operations and office have been transferred to the Lodge, making way for the demolition of the almost

## Diocese taking survey on camp

Camp Mokule'ia is a subsidiary organization of the Diocese of Hawai'i. The only other such organization is St. Andrew's Priory School for Girls. The Diocesan Council serves to elect the Board of Directors of the Camp.

At the request of Bishop Fitzpatrick, a task force of the Standing Committee is conducting a survey about the place of Camp Mokule'ia in the life of the Diocese of Hawai'i.

That survey was posted on the diocesan Web site in February, so that members of the Diocese could complete it and return it.

The survey was due March 31, but completed forms are still being accepted. Instructions on where to send the completed survey are contained in the document, which can be downloaded at the Web site below.

### Go to:

To download the survey, go to: [www.episcopalhawaii.org/ViewArticle.php?key=853](http://www.episcopalhawaii.org/ViewArticle.php?key=853)

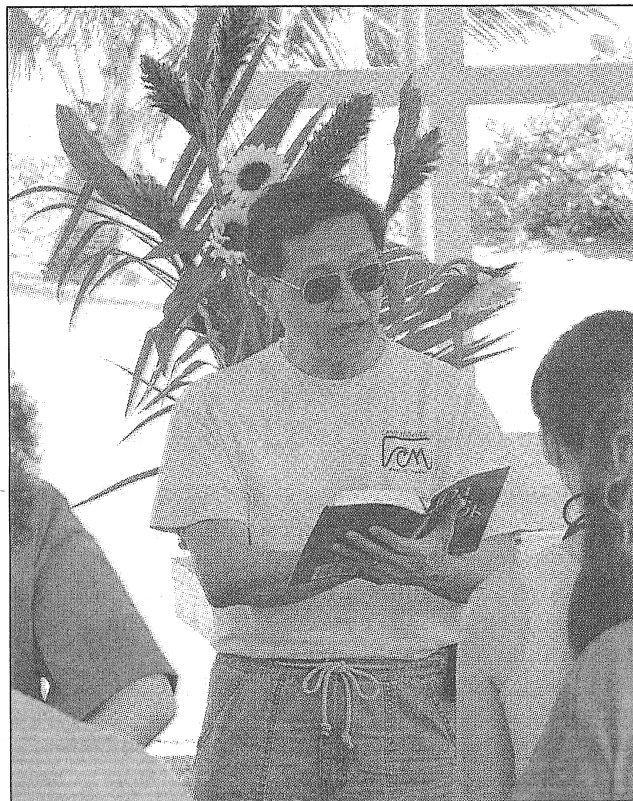
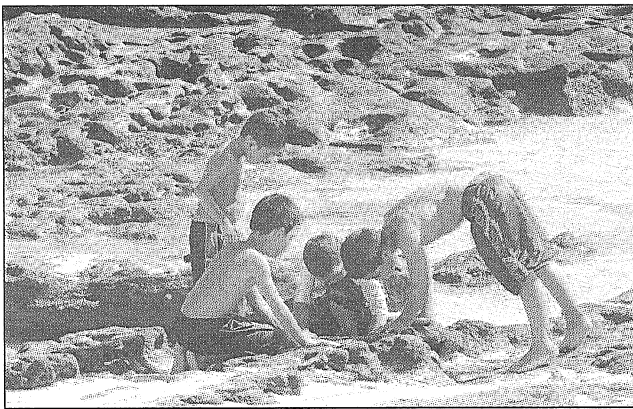






PHOTOS BY THE REV. DAVID H. BLANCHETT, WASILLA, ALASKA

July 18. The day was filled with worship, food, swimming, kayaking, karaoke, and more.



## egin Lodge renovation

50-year-old "temporary" construction shed that had housed the camp office. That structure previously had served as the construction office for Phase 1 of the Ala Moana shopping center in 1959. Removal of this unsightly building will restore the view to the ocean from the Camp's entrance, enhancing guest experience.

Architect Sid Snyder is working on the plans for the renovation of the Lodge, which was built in 1989. Renovation should bring the building, serving the adult community, into an excellent state of repair and appearance. A new and complete furniture package has been put together, which we will lease.

Construction of a plaza between the Lodge and Dining Hall will acknowledge the role of this site in the life of the Camp. Every guest traverses this site many times daily, and many gather there before dining.

It is the informal meeting place for the Camp, assisting in the development of one of our key functions: building community.

We hope that much of this work can be completed before our summer busy season.

Additional work planned, but unfunded, includes: (1) updating the activities field to provide a better experience for users of our outdoor education facilities; (2) renovating the remaining staff residence; (3) landscaping; and (4) clearing and preparing the Sutton lands for use. We initially envision using those lands for additional parking, a new athletic field, outdoor chapel, and additional tent camping.

The camp is also happy to announce the arrival in mid-October of our new business manager, Debbie Alameida. Debbie has years of nonprofit experience, most recently serving as the office manager at Camp Erdman. We are so happy to see her on board.



## Camp

CONTINUED FROM FRONT PAGE

Among those who stood to voice their memories of the Camp was a woman named Lora, who has been coming to the Camp since 1995. Her children, she said, say to her, "Mom, Camp Mokule'ia is our favorite place in the whole world!"

The worship service was followed by skydivers from the nearby glider port, a sumptuous picnic prepared by camp staff, and a celebration of plans underway to renew, rebuild, and refurbish this "Place Apart" on the narrow beach front property.

Invitations had gone to all clergy and churches in the Diocese, as well as to the neighborhood which has grown over the years to a large community called the North Shore/Waialua. The Rev. David Blanchett, a visiting priest from Alaska, said, "The hospitality of the staff, Debbie, Tricia, Rolando, Rick, Anne, plus the many volunteers, was truly amazing!"

Afternoon events consisted of swimming in both ocean and pool, kayaking, traversing the ropes course, archery, basketball, fishing, sunning, karaoke, surfing, or just lounging about, perhaps watching the skydivers. There were raffle drawings for coffee mugs, Frisbees, stuffed animals, T-shirts, and free night stays at the Camp.

Early in his ordained ministry the Rt. Rev. Richard S. O. Chang, retired Bishop of Hawai'i, was camp director; and the Rev. Canon Brian Grieves, now serving at the Episcopal Church Center in New York but still canonically resident in the Diocese of Hawai'i, was also Camp Director at one time.

As is true with many church camps, most of the usage is by groups, schools, and organizations not connected to the Episcopal Church.

However, Camp Mokule'ia continues to encourage clergy, churches, and groups from the churches to "use their very own camp" at Mokule'ia.

Fundraising efforts have been successful so far in raising much needed monies to rehabilitate the camps buildings, cabins, and other facilities located on the Camp's 3.5 acres of beachfront land.

A recent donation of 10 acres across the road, where the O'ahu Railway and Land Company operated trains prior to WWII, will enable future expansion of facilities and programs.

*The Rev David H. Blanchett, Bishop's Staff Officer in the Diocese of Alaska, and the Rev. Canon Liz Beasley contributed to this article.*



# Having faith in our future

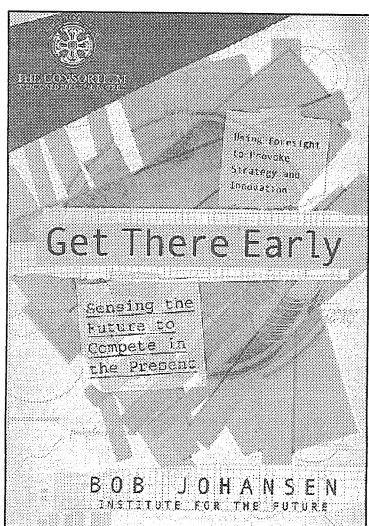
By Lani Kaaihue

ST. ELIZABETH'S, HONOLULU

Most of us, at one time or another, find ourselves wondering about the future and how it might affect our families, our churches, our communities, and society. In the history of the Episcopal Church, our leaders have successfully faced and solved many problems. Yet somehow, in the church and elsewhere, today's problems resist resolution despite our best efforts. Why? Because they are dilemmas: problems that cannot be solved, problems that won't go away. What can be done when problem solving is not enough?

Fortunately, Episcopalians have an edge over others in dealing with dilemmas: our religion embraces dilemmas. For example, we are both catholic and protestant. Our faith, based on scripture, tradition, and reason, utilizes discerning questions frequently. The practice of discernment can serve us well in facing the future.

What if there was a guide to the future — a forecast, not a prediction — designed specifically for the Episcopal Church to give us a chance to shape our behavior in



**Get There Early, by Dr. Bob Johansen is part of a package about faith in the future.**

the present to create the future we desire?

In the sleet-shrouded city of St. Louis, Mo., in February 2008, nine Episcopalians from Hawai'i were among the first to preview a specially commissioned three-part work from The Institute for the Future. They were attending — with others from around the country — the meeting of the Consortium of Endowed Episcopal Parishes.

The foundation for the 10-year forecast for the future is a book ti-

tled *Get There Early* by Dr. Bob Johansen. Accompanying it are a Forecast Map and a "Book of Provocation." To illustrate possibilities, samples of Artifacts from the Future were also provided. This package of resources is designed to stimulate "faith-in-the-future conversations" to enable us, as a community, to deal with dilemmas.

The Consortium of Endowed Episcopal Parishes commissioned the package in a special limited printing and they are considering a larger printing.

Curious? One set is available at the Office of the Bishop and may be borrowed for a 21-day period. Please email or leave a phone message with your request to borrow the materials by contacting Lani Kaaihue at lkaaihue@episcopalhawaii.org or 536-7776 (Neighbor Islands: 800-522-8418), ext. 309.

Those from the Diocese of Hawai'i who attended the meeting in St. Louis were:

Holy Nativity: The Rev. Rick Vinson; St. Andrew's: The Very Rev. Tim Sexton, the Rev. Moki Hino, and Canon Jenny Wallace; St. Clement's: The Rev. Liz Zivanov, Grace Lee, and Jason Healey; St. Elizabeth's: The Rev. Jodene Hawkins and Lani Kaaihue.

## Upcoming conferences that may be of interest

Province VIII of the Episcopal Church, of which the Diocese of Hawai'i is a part, has several conferences coming up in the next few months. Below is a brief description for each, with dates.

- "The Greatest Story Ever Told": Stewardship and Evangelism Conference, June 26-28, Monarch Hotel and Conference Center, Clackamas (Portland area), Oregon. The conference is

described as a "multi-cultural, intergenerational, family-friendly event that promises to help us tell our stories in ways that promote the Kingdom of God. Expect to use both sides of your brain, hear new stories, learn new ways of telling them, and feel more confident sharing your own."

- Commission on Ministry Network gathering, July 29-31, Franciscan Center, Scottsdale, Arizona.

The conference will focus in part on "the recent work in the Province [on] 'Cultural Diversity in the Ordination Process.'"

- Provincial Synod, September 8-11, Mercy Center, Burlingame, Calif. The business meeting of the Province, including an orientation to General Convention 2009.

For more information on each of these conferences, go to: [www.provinceviii.org](http://www.provinceviii.org).

## DIOCESE.COM

### NEWS FROM AROUND THE DIOCESE

#### Good Shepherd as Jubilee center

Good Shepherd Church, Wailuku, has been designated a Center for Jubilee Ministry by the Executive Council of the Episcopal Church. Such a designation recognizes the variety of ministries the church undertakes on behalf of its community, such as the Queen Emma Athletic Club, a weightlifting program for teens, and the Ka 'Ohana Kitchen, which serves a meal every Sunday to those who are hungry.

#### Submit evaluations of 2007 activities

Documents for congregations and commissions requesting money from the diocesan budget have been posted on the diocesan Web site.

Congregations need to submit an evaluation of their 2007 activities by April 16 to the Commission for Congregational Health and Growth. They will then receive the Resource Grant Request form.

Commissions also must submit an evaluation of their 2007 activities, as well as a Resource Grant Request and a narrative budget.

For copies of these documents, go to the Office of the Treasurer page on the diocesan Web site: [www.episcopalhawaii.org/DisplayPage.php?PageName=OffTreas](http://www.episcopalhawaii.org/DisplayPage.php?PageName=OffTreas)

#### Clergy transitions

The Rev. Walt Harris has been appointed as the Interim Vicar of St. George's Church, Honolulu (Pearl Harbor). He began his duties there on February 17, while the church is in a search process for a new Vicar. Harris, a retired Air Force Chaplain, officially retired in 2001, after serving as Vicar of St. John's By-the-Sea, Kahalu'u, where he served part-time while he also worked for the U.S. Navy. He most recently has been serving as long-term supply for Holy Cross, Kahuku.

In February, the Vestry of St. Elizabeth's Church, Honolulu (Palama), voted to call the Rev. Imelda Padasdao as Priest Associate. She began her duties at St. Elizabeth on Easter Sunday, March 23. Padasdao has been ordained a priest since 1990 and has been serving as long-term supply for Resurrection, Hilo, and St. Columba's, Paauilo, as well as regularly serving the Filipino Ministry in West Kauai. She also works full-time for the Department of Transportation.

#### In Memoriam: The Rev. Domingo Calag

The Rev. Domingo Calag died on February 21, 2008. He served as the Vicar of Resurrection, Hilo, and St. Columba's, Paauilo, on the Big Island until retiring for reasons of medical disability effective January 2002. He was ordained in the Philippines in 1984 and came to this country in 1986. A wake was held for him on March 14, with the Revs. Tim Quintero and Imelda Padasdao officiating. The burial Eucharist was held on March 15, at Holy Apostles, Hilo, with retired Bishop Richard Chang officiating. Interment followed the service.

## Special Angels: A spiritual ministry and celebration

By Hazel S. Milnor

PRESIDENT/FOUNDER, SPECIAL ANGELS

The halls are festive with decorations as every three months, in February, May, August, and November, Special Angels has a Spiritual Ministry and Celebration. Volunteers arrive early to set up and are ready when the 65 to 110 people arrive at 10 a.m. for this special ministry for people with mental retardation.

A clergy person says a prayer, as all stand in a circle holding hands, followed by a short message from the clergy. The message usually is along the lines of "You are loved, you are not alone. There is a higher power." Many have been rejected or placed as wards of the state. Some have a short attention span, so the service is not long.

The worship is followed by music and dancing, games and watercoloring. The woman in charge of the watercolors, Evelyn Quisenberry, is a talented and creative person. She brings about 100 sheets, with her drawings on them to be painted.

We serve a buffet luncheon before they leave. This usually consists of hot dogs and buns, a fruit platter, a vegetable platter, hummus and corn chips, cookies, and fruit juice. There is no offering taken, and no charge asked.

The theme for the Celebration on February 9, held at Calvary Church, Kane'ohe, was Valentine's Day. My daughter, Jean Ann, who attends these Celebrations, signed 96 valentines to give away. A signed card seems more personal. Jean Ann and another person said grace before the meal. Candy and small boxes of raisins were scattered on the tables.

The mission of Special Angels is "to make known to the world and to help meet the spiritual and social needs of people with mental retardation." We are the only spiritual ministry for the mentally retarded of which I am aware.

Special Angels has 10 Development Committee meetings each year to plan these events. There are also two Board meetings per year.

The next Celebration event is 10 a.m.-noon on May 3 at St. Andrew's Cathedral.



SUBMITTED PHOTO

**Evelyn Quisenberry helps attendees at a Special Angels event with watercoloring. She brings drawings on which participants can paint.**



# Liturgy, fellowship celebrate St. Augustine's sages

St. Augustine Episcopal Church on the Big Island recently celebrated at a Sunday liturgy and fellowship the lives of six members of its congregation who have entered into the 10th decade of their lives.

The focus of the celebration was to name and claim the six members as sages, talk story tellers, and founts of wisdom. The Rev. Tom Buechele, Vicar, said, "Many of their life stories tell of hard times, but as Christian sages they teach us that it is possible to turn their wounds into sacred scars. They have a great sense of tolerance, patience, open-mindedness, understanding, and compassion."

When asked at the service, "What do you think of Jesus?" they responded: "He's my beloved master." "I love Jesus." "I don't think I could live each day without Jesus." "He's wonderful." "Alright!!!!"

"Their responses were the best sermon preached at St. Augustine since I've been here," Buechele quipped. The children presented celebration baskets containing macnut cookies, Valentine's chocolate, and a can of Spam commemorating the 70 years of the product. "How can anybody in Hawai'i be older than Spam?" quipped one of the 90-year-olds.

"Aging is about saging," said Buechele. "God knows we need sages in our time."

According to the U.S. Census Bureau the age 50+ market will grow to over 106 million by 2015 when they will account for 45 percent of the adult population in the United States.

As older folks become more and more prevalent, dispelling myths about aging and the role of the elderly in healthy, vibrant congregations is critically important.



St. Augustine's sages stand with Vicar, the Rev. Tom Buechele (in back). L to R: Harriet Medve, Ida Lum, Karl Bader, Shigeko Kurashige, Clara Gomes, and Miriam "Mim" Morgan.

## Bishop

CONTINUED FROM PAGE B

Episcopal Church, used in accordance with the rubrics (which allow great latitude).

Congregations may (and are encouraged to) use the supplemental liturgical materials found in *Enriching Our Worship* (1 and 2). If using these liturgies, inform the Bishop in writing (email is fine), and provide opportunities for evaluation of them. Then share these evaluations with the Bishop within six months.

There is a Hawaiian Eucharistic liturgy authorized for use in the Episcopal Church. An Ilokano liturgy is being developed.

The principal Sunday worship will use Eucharistic Prayers from the *Book of Common Prayer* or from *Enriching Our Worship*. No congregations will use other forms or "An Order for Celebrating the Holy Eucharist" at principal Sunday or regularly scheduled worship.

The Nicene Creed should be recited on Sunday and other Major Feasts as required by the rubrics.

### HOLY BAPTISM AND HOLY COMMUNION

Baptisms should take place in the context of public worship within the Holy Eucharist on a Sunday or feast day (BCP, p. 298).

Private Baptisms should take place only in the event of a pastoral emergency (in which case, tell the Bishop afterwards) or very rare pastoral necessity (in which case, consult with the Bishop beforehand).

Private Baptisms will not be held at the Cathedral or mission congregations without the Bishop's express permission.

Baptisms should be reserved for those days listed in the *Book of Common Prayer* (p. 312) as especially appropriate, or on the Feast of the Transfiguration (August 6) or the Sunday following.

When children are baptized, par-

ents and godparents are to be instructed in the meaning of Baptism and their responsibilities. It must be clear that someone must regularly attend church (whether Episcopal or not) with the child (whether in Hawai'i or not).

Adults and older children should be thoroughly prepared before Baptism, in recognition of the life-changing promises of the Baptismal Covenant.

Clergy should ensure follow-up with any persons who seem not to make it to church after the administration of the sacrament so that we can collectively fulfill our promise to "uphold" the person in their new life in Christ.

While clergy are not expected to be the "sacrament police," the canon regarding Baptism and reception of Holy Communion shall be followed throughout the Diocese: "No unbaptized person shall be eligible to receive Holy Communion" (Canon I.17.7). This can be stated positively as: "All baptized persons are welcome to receive the Holy Communion regardless of age or Christian tradition." [See the Web site for a full explanation of this prohibition against what is commonly called "open Communion."]

### CLERGY AND CONGREGATION RELATIONSHIPS

Regarding "snowbirds" being members of Vestries or Bishop's Committees, an Episcopalian can only be a member of one Episcopal congregation at a time. Use letters of transfer to keep track of active members — even if they are on island only part of a year. How part-time members can take part depend upon the by-laws of the congregation.

Clergy, even retired or non-parochial clergy, are never members of a congregation. They do not serve on Vestries or Bishop's Committees or vote at annual meetings of congregations.

Retired and non-parochial clergy may regularly attend a congregation with the agreement of the clergy-in-

charge of the congregation.

Retired and non-parochial Priests may "officially" be assigned sacerdotal ministry in a parish by the Rector or in a mission by the Bishop.

Even any one-time sacerdotal participation in the worship of a congregation is by invitation of the clergy-in-charge or by the Bishop when there is no clergy-in-charge.

All Deacons exercising ministry are assigned by the Bishop in any Church setting.

Once Bishops "retire" they remain on the rolls of the House of Bishop, but they are canonically resident in a Diocese and subject to the same restrictions. "Retired" Bishops can only function in priestly or episcopal ministries with the permission of the Diocesan Bishop.

Clergy who have formerly served in a congregation will not return to a former congregation they have served without the express invitation of the incumbent clergy-in-charge, even for a visit and certainly for any sacerdotal ministries.

After leaving a congregation, a clergyperson will not return for at least one full year and will have as limited contact with former parishioners as possible and yet remain respectful.

Baptisms should be performed only by the congregation's current clergy (or the Bishop) — and not by former clergy — after appropriate instruction by clergy of the home congregation. At their discretion, the clergy-in-charge may invite the clergy with a past pastoral relationship to take part in the liturgy that includes the Baptism and even to administer the Sacrament.

If congregants contact their former clergyperson (rector, vicar, or chaplain) about other sacramental rites or pastoral concerns, they should be referred back to the clergy-in-charge of the congregation. The clergy-in-charge may certainly invite the former clergy to take part or even to perform the service. [See the Web site for a fuller discussion of situations that may arise with former clergy and congregants.]

## COMING SOON

[www.episcopalhawaii.org/calendar/calendar.php](http://www.episcopalhawaii.org/calendar/calendar.php)

### APRIL

- Apr 12 ECW monthly meeting, St. Matthew's, 9:30 am – 1 pm
- Apr 16 Resource Grant Request mailed to those who have submitted strategic plans
- Apr 19 Council Dept. meetings, 9 am Standing Committee, 9 am Diocesan Council, 12:30 pm
- Apr 25 Deadline for June issue of Hawaiian Church Chronicle
- Apr 30 Priory Senior Class Reception, 4 pm

### MAY

- May 1 Ascension Day Founders' Day service, Priory School
- May 8 Commission on Ministry, 2 pm
- May 10 ECW monthly meeting, St. Clement's, 9:30 am – 1 pm
- May 11 Pentecost Sunday
- May 13 Deadline for Resource Grant Request
- May 15 Resource Development Dept., 11:30 am
- May 17 Council Dept. meetings, 9 am Standing Committee, 9 am Diocesan Council, 12:30 pm
- May 26 Memorial Day holiday; Office of the Bishop closed
- May 30 Deadline for July/August issue of Hawaiian Church Chronicle

### JUNE

- June 1 St. Andrew's Priory Baccalaureate, 3 pm
- June 5 Resource Development Dept., 11:30 am
- June 7 'Iolani Graduation, 5 pm
- June 8 St. Andrew's Priory Graduation
- June 11 Kamehameha Day Holiday; Office of the Bishop closed
- June 12 Commission on Ministry, 2 pm
- June 21 Council Dept. meetings, 9 am Standing Committee, 9 am Diocesan Council, 12:30 pm

For a full schedule of events, activities and meetings around the Diocese, check out the Calendar of Events on [episcopalhawaii.org](http://episcopalhawaii.org). Updated regularly, event submissions welcomed.



# The Presiding Bishop's annual Easter message

By The Most Rev. Katharine Jefferts Schori

Your Easter celebration undoubtedly included lots of physical signs of new life: eggs, flowers, new green growth. As the Easter season continues, consider how your daily living can be an act of greater life for other creatures. How can you enact the new life we know in Jesus the Christ? In other words, how can you be the sacrament, the outward and visible sign, of the grace that you know in the resurrected Christ? How can your living let others live more abundantly?

The Judaeo-Christian tradition has been famously blamed for much of the current environmental crisis, particularly for our misreading of Genesis 1:28 as a charge to "fill the earth and subdue it." Our forebears were so eager to distinguish their faith from the surrounding Canaanite religion and its concern for fertility that some of them worked overtime to separate us from an awareness of "the hand of God in the world about us," especially in a reverence for creation. How can we love God if we do not love what God has made?

We base much of our approach to loving God and our

neighbors in this world on our baptismal covenant. Yet our latest prayer book was written just a bit too early to include caring for creation among those explicit baptismal promises. I would invite you to explore those promises a bit more deeply — where and how do they imply caring for the rest of creation?

We are beginning to be aware of the ways in which our lack of concern for the rest of creation results in death and destruction for our neighbors. We cannot love our neighbors unless we care for the creation that supports all our earthly lives. We are not respecting the dignity of our fellow creatures if our sewage or garbage fouls their living space. When atmospheric warming, due in part to the methane output of the millions of cows we raise each year to produce hamburger, begins to slowly drown the island homes of our neighbors in the South Pacific, are we truly sharing good news?

The food we eat, the energy we use, the goods and foods we buy, the ways in which we travel, are all opportunities — choices and decisions — to be for others, both human and other. Our Christian commitment is for this — that we might live that more abundant life, and that we might do it in a way that is for the whole world.

## Anniversary for a king

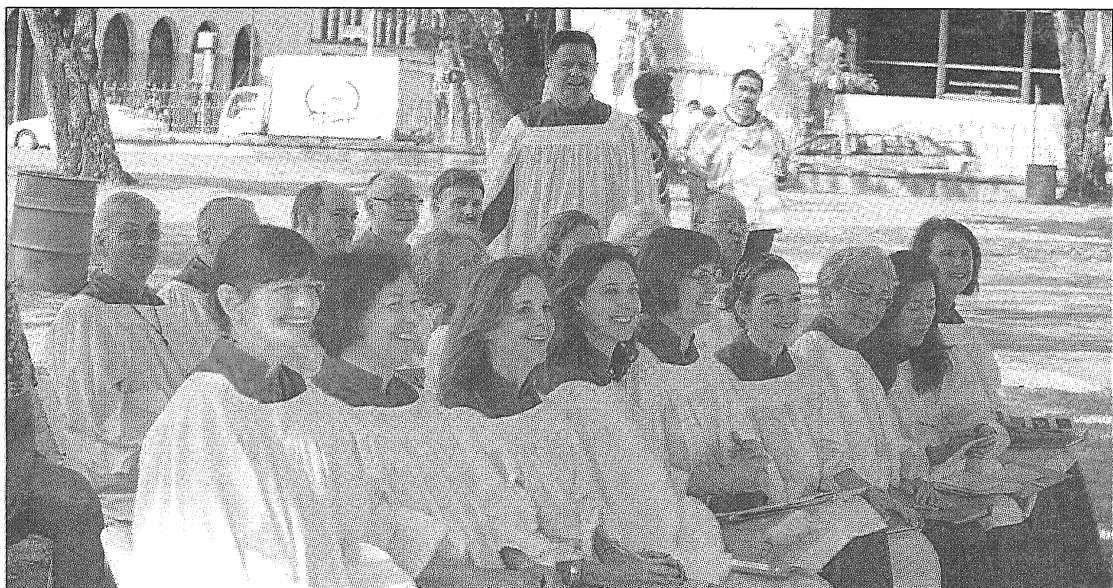


PHOTO BY THE REV. CANON LIZ BEASLEY

The St. Andrew's Cathedral Choir, shown above with Director of Music John Renke (standing), along with Bishop Bob Fitzpatrick and Cathedral Provost Tim Sexton, participated in the 125th anniversary of the Coronation of King Kalakaua, held at 'Iolani Palace in Honolulu.



## Jazz Festival

On the first weekend in February (and the last weekend before the beginning of Lent), St. Michael and All Angels, Lihue, held a Jazz Festival. The Festival consisted of Friday and Saturday night concerts with top jazz musicians from Hawai'i and the Mainland, and a Jazz Mass on Sunday. Each of the concerts had more than 200 people in attendance. Sunday's Jazz Mass (there were two, one shown at left) were attended by 488 people.

PHOTO BY COLETTE BUIS

# Management of investments of Pooled Endowment Fund

By Peter Pereira

TREASURER, EPISCOPAL DIOCESE OF HAWAII

The Pooled Endowment Fund of the Episcopal Diocese of Hawai'i had a value of approximately \$36.6 million as of December 31, 2007. Of that total, approximately \$18 million belongs to the Diocese; the balance is owned by other churches and organizations in the Diocese.

This fund functions like a mutual fund: all participants own shares in all of the holdings. Currently the fund is divided among five managers, each with a different "style":

Atalanta Sosnoff Capital Corporation, a Domestic Balanced Manager; C.M. Bidwell & Associates, a Domestic Equity Manager; NWQ Investment Management, a Domestic Equity Manager; Wentworth, Hauser and Violich, an International Equity Manager; Frolely Revy Investment Management, a Domestic Convertible Bond Manager

The diocese has a contract with Citi-Smith Barney (CitiSB) to serve as the independent investment monitor and advisor. CitiSB does not manage any money; instead, it monitors the performance of each manager against the diocesan investment

policy and the agreed-upon performance benchmarks. The monitor arranges for the Resource Development Department of the Diocesan Council to meet annually with each manager. The monitor also advises the Council (through RDD) on the selection and replacement of managers asset allocation and provides quarterly reports on the performance of all the managers.

The Diocesan Council has adopted an investment policy that is binding upon each of the managers. The CitiSB monitor checks for compliance with this policy. In addition, the monitor provides RDD with a list of each manager's holdings so that the Department can also review them.

The policy includes a section on social investment screens, as follows:

As a responsible member of society, The Diocese Pooled Endowment Fund wishes to avoid investments in enterprises whose purposes, products, or philosophies are deemed destructive to a harmonious and equitable society. Therefore, the investment manager(s) should only purchase investments in companies that do not derive revenues from the production, sale, or distribution of liquor or tobacco, or from the ownership or operation of gambling establishments. In addition, the Fund has subscribed

to the principles and guidelines of Social Responsibility in Investments, a Committee of the Episcopal Church. (For more information, visit the SRI section of the Episcopal Church Web site: [www.episcopalchurch.org](http://www.episcopalchurch.org)).

The Diocese has also signed up for ProxyEdge, a service in which proxies of securities owned by the Pooled Endowment are voted by the Church Pension Fund. By combining the voting power of many different participating organizations, the Pension Fund is able to exert influence upon corporations whose policies do not meet the ethical standards held by the Church.

Through its investment policy, the Diocesan Council has in place sufficient means to monitor the fund both for performance and for compliance with social policies. The Council receives regular reports (through RDD) from the investment monitor and reviews the investment policy at least annually.

The Fund invests with a targeted equity exposure of 60-70% and as of December 31, 2007 has returned 9.5% for the trailing 1 year, 10.5% annualized for the trailing 3 years, and 11.7% annualized for the trailing 5 years. Since its inception date of June 30, 1992, the Fund has returned a compound-

ed rate of 9.6% annually. All of these performance numbers are net of investment fees and above the comparable benchmarks.

The fund offers participants the opportunity to invest in a well-diversified investment fund that has the oversight of both the Resource Development Department and a third-party consultant. Additionally, participants in the fund benefit from the lower expenses associated with a larger investment pool in both investment management fees as well as institutional commission rates that the fund utilizes.

All Episcopal Churches and Episcopal Schools and related entities of the Diocese can participate in the Pooled Endowment Fund of the Diocese. The Fund allocations are done by an Independent CPA firm. No members of the Office of the Bishop or Diocesan Council benefit from this Fund. The Diocese does not charge any fees and does this as a service for our congregations and schools. The Diocesan Council and Standing Committee and senior staff annually complete a Conflict of Interest disclosure form. This fund is audited annually by another CPA firm, independent of the CPA firm that does the Pooled Endowment Fund allocations.