

Hawaiian  
Church

episcopallife

# Chronicle

VOLUME 104, No. 8

THE NEWSPAPER OF THE EPISCOPAL DIOCESE OF HAWAII

NOVEMBER 2005



## Response to Katrina is swift, generous

By The Rev. Liz Beasley

CHRONICLE EDITOR

When Hurricane Katrina struck the Gulf Coast in late August, Episcopalians in Hawai'i searched for ways to help those affected. Bishop Richard Chang immediately issued a call to all congregations to take up offerings for Episcopal Relief and Development (ERD). He says, "I am grateful for the support that the churches and individuals of this Diocese have given."

As of mid-October, 14 congregations and schools reported collecting more than \$50,000 for ERD for hurricane relief in the Gulf, through Sunday collections and special events. Calvary Church, Kane'ohe, had planned a yard sale for September 17 to help fund an October mission trip to Juarez, Mexico. The church immediately diverted the funds to ERD for hurricane relief.

St. Andrew's Cathedral, Honolulu, hosted a major fundraiser, entitled "A Night in Old New Orleans: A Food and Jazz Fest," on Sept. 16 and 17. Organized by the Rev. Honey Becker, a deacon at the Cathedral and a native of New Orleans, the meal included traditional New Orleans fare, such as chicken and sausage gumbo and Bananas Foster. Following the meal were musical offerings from the pianist Tennyson Stevens, the City of Refuge Gospel Choir, the Iolani Jazz Band, and other jazz, Dixieland, and Delta blues. The food and music were donated, and the event generated \$15,000 for ERD.

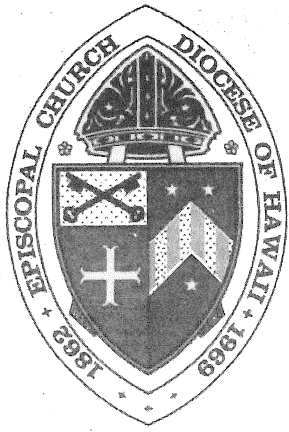
Sherron Dudoit and John Kaapuni, Jr. from Grace Church, Moloka'i, and their cousin, Dustin Calairo, joined members of Kaunakakai Baptist Church and the Moloka'i Catholic Community for

Continued on Page C

Food and music from New Orleans fill St. Andrew's Cathedral during the "Night in Old New Orleans" fundraiser in September. The event raised \$15,000 in aid for victims of Hurricane Katrina.

PHOTO BY RICHARD WALKER OF THE HONOLULU STAR BULLETIN

266.305  
H3L3



## Hawaiian Church Chronicle

VOLUME 104, NUMBER 8  
NOVEMBER 2005

The Rt. Rev. Richard S.O. Chang,  
Bishop

229 Queen Emma Square  
Honolulu, Hawai'i 96813-2304  
Telephone: (808) 536-7776  
Fax: (808) 538-7194

Episcopal Life ISSN 1050-0057  
USPS# 177-940 is published monthly by  
the Domestic and Foreign Missionary  
Society, Inc., 815 Second Ave., New  
York, NY 10017. Periodicals postage  
paid in New York, N.Y., and  
additional mailing offices.

**POSTMASTER:** Send change of  
address to Episcopal Life, P.O. Box  
2050, Voorhees, NJ 08043-8000.

**READERS:** To change subscription  
address, contact:

Episcopal Life Circulation Department  
P.O. Box 2050  
Voorhees, NJ 08043-8000  
email: [elife@aflwebprinting.com](mailto:elife@aflwebprinting.com)  
1-800-374-9510

The Rev. Liz Beasley  
Editor

Elizabeth House  
Design/Layout

The Hawaiian Church Chronicle is the  
official news publication of the Episcopal  
Diocese of Hawai'i. All policy, editorial and  
administrative decisions are under the  
direction of the editor in consultation  
with the Bishop.

The Chronicle welcomes suggestions, story  
ideas, comments and opinions from its readers.  
Send articles, letters, news and photographs to:  
the Rev. Liz Beasley, Editor, Hawaiian Church  
Chronicle, 229 Queen Emma Square, Honolulu,  
HI 96813-2304.  
E-mail: [lbeasley@episcopalhawaii.org](mailto:lbeasley@episcopalhawaii.org)  
Telephone: (808) 536-7776 ext. 326

The Chronicle does not assume responsibility  
for the return of photographs or manuscripts.

[www.episcopalhawaii.org](http://www.episcopalhawaii.org)

**December 2005-January 2006  
issue deadline:  
Nov. 3**

# 'All things come of thee, O Lord...'

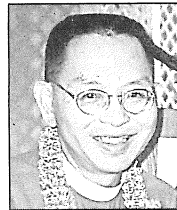
Dear Sisters and Brothers in Christ,

The common theme found in the newsletters and bulletins of congregations of our Diocese recently is stewardship. The fall is a time when stewardship receives special attention in congregational life. In my reading of these newsletters and bulletins it is evident that each of our congregations begins their stewardship education from a different place. For some, this year's plan is a return to the basics of stewardship and its many facets. Other congregations are building upon educational programs they had begun in years past.

Many congregations are giving special attention to the stewardship of all the gifts that God has given us. Attention is given to the reality that all that we possess is from and of God. The skills and talents that we use to earn a living as well as the time that we have for leisure and ministry are gifts from a loving and caring God. We are asked as to what kind of stewards, or "tenants of the Lord's vineyard," we are. Congregations are inviting its members into deeper personal and prayerful reflection on how each member exercises stewardship each day of their lives.

As I have read these newsletters and bulletins, I feel drawn into reflection of my own stewardship. This is an exercise that Dee and I have undertaken in November each year. We understand this as an exercise of faith. For us, stewardship is a faith question.

As many of you already know, I strongly believe that we must ask ourselves the



The Right Rev.  
Richard S.O. Chang  
BISHOP OF HAWAII

question of faith before we calculate our pledges in time, talent, and treasure. Faith shapes how we decide to use the blessings that God has given us.

Dee and I have never felt that God has not blessed us. We have been blessed in ways that we have recognized and in ways that we have not yet understood. Regardless, we have been thankful stewards. And because of this, we always begin with the tithe as the minimum for our giving in the church. Our giving in the wider community is beyond that. For us this is our way of affirming our faith in a generous God and living as faithful stewards.

I pray that this November each member of the church will seriously and prayerfully reflect upon their stewardship of the gifts and abundance that God has given, regardless of size or amount or value.

As a beginning, ask yourself the question, "Am I being a good steward as a disciple of Jesus Christ?" Then, ask yourself the question, "Is my practice of stewardship grounded in my faith in Jesus Christ, so that living my baptismal covenant is practicing stewardship?" Ask these two questions before you ask yourself what amount you will write on your pledge card.



## Living out our faith in verbs of action

*Editor's Note: Thanksgiving is one of my favorite holidays. It is a time to reflect with gratitude on the gifts God has given us and a time to recognize our bonds with others. So our November issue is focused on giving and thanksgiving. Included here are stories of hurricane relief, help for the hungry, and stewardship. Instead of my usual column, I am printing a report on the Stewardship workshop held on September 10, by Leo Loyola, of St. John's By-the-Sea, Kahala'u, reprinted from the church newsletter, the Ho'oulu.*

[Reflecting on the call of the Diocesan Strategic Plan to evangelize,] if it is our responsibility as Christians to evangelize, how do we go about doing so? What is it that keeps people — what makes people feel uneasy — from inviting people to a place they personally enjoy?

To explore these and other questions, I sat in on a stewardship conference, aptly named "Do We Trust God Enough?" Facilitated by Rev. Canon Bob Fitzpatrick and the Stewardship Committee, this was an opportunity for the Diocese to train laity to become better "extensions of Christ," as Presiding Bishop Frank Griswold phrased.

"What is the nature of stewardship?" Bob asked, as he stood before the crowd in the St. George meeting room. "If you're here to save the budget...if you're here to save the vicar's salary, close the church. This is about God. If [your church] is gathering because they are nice people, then

you should collect dues." Bold statements, and immediately I knew that I would find the answers I was hoping to find.

He continued: "Where does your picture of God come from? Where you're worried, there your God or demon dwells.... If your God is clouded by fear—a sense of insecurity—you have no reason to share." For church growth to truthfully occur, it must start off as an extension of our beliefs in God. By nature we are also giving and loving children of God and should act likewise. We do what we do because we are "extensions of Christ."

Bob went to the whiteboard and had people from the group read several readings from the Book of Matthew ("The book that most tells us what it might look like to be a follower of Jesus at that time," Bob said), specifically Matthew 22:34-40; 25:31-46; and 28:16-20. From the passage in Matthew 22, three concepts of our faith could be found in God's greatest laws: (1) Put God above all else; (2) Love God, others and ourselves; (3) Follow rules 1 and 2.

From the passage of Matthew 25, Bob asked the group to pick out the verbs that are examples of how to love others. Words like *gave, welcome, took care, and visit* were shouted out. From the last passage, Bob asked the group to again pick out the verbs. The group shouted words like *worship, baptize, make disciples, teach, and remember*. These verbs, Bob said, are the "building

blocks of serving," the end goal to why we as Christians give, welcome, and *malama* others.

He looked up from the board and concluded: "Stewardship begins with every minute of every day. Being followers of Christ is lived only in verbs rather than beliefs. Show your neighbor how you live and you show them your faith. How you live is how you share (with others) what you got from God. Faith is uncomfortable: to follow Jesus means that our lives are changed. Is it a choice or is (being a Christian) the way (we are)? While our faith is based on belief, ultimately it is what we do that matters."

Essentially whether we are actively inviting people to church or involved in other ministries, we do these things because it is our nature and duty as Christians to share what God has given us. What we share of ourselves is both in relation to how we relate to God and others and who we are as individuals. And it can be simply defined by what Jesus said when tested by a lawyer on which of God's laws were the most important: "You shall love the Lord your God with all your heart and with all your soul, and with all your mind." This is the greatest and first commandment. And a second is like it: "You shall love your neighbor as yourself." On these two commandments hang all the law and the prophets" (Matt. 22:34-40).

## BISHOP'S VISITATION SCHEDULE

### NOVEMBER 2005

Nov. 6.....St. Nicholas', Kapolei  
Nov. 13.....St. Clement's, Honolulu  
Nov. 27.....St. Andrew's, Honolulu

### DECEMBER 2005

Dec. 4.....St. George's, Honolulu  
Dec. 11.....Grace, Moloka'i  
Dec. 18.....St. Augustine's,  
Kapaau, Hawai'i  
Dec. 25.....St. Andrew's (Christmas)

### NOVEMBER 2005

Jan. 8.....St. Matthew's, Waimanalo  
Jan. 22.....St. Peter's, Honolulu  
Jan. 29.....St. John's, Eleele,  
and St. Paul's, Kekaha  
(Episcopal Church on  
West Kaua'i)

Do you really believe these words that  
you have recited many times in our wor-  
ship, "All things come of thee, O Lord,  
and of thine own have we given thee?"

Faithfully yours,  
+Richard



# Operation Backpack is success-filled

Operation Backpack on Oct. 9 assembled a number of items that the participating churches had been collecting over the previous several months for distribution to the needy on O'ahu.

The items were primarily toiletries, school supplies, and paper goods. These items often are not available through other avenues, such as food banks, but their cost can be daunting for someone with limited resources.

Operation Backpack is a joint project of the Windward Episcopal churches, plus St. Clement's and St. Andrew's Priory, along with several Lutheran congregations.

The churches divided up the list of desired items to be contributed by their members. People also could give toys, dolls, stuffed animals, books, McDonald's gift certificates, and movie certificates. The Priory contributed almost 1,000 food items.

The ministry serves people from four different groups: elderly individuals living in low-income housing; people living on the beaches near Waianae; families living in a homeless transitional housing unit near Barber's Point; and clients of Angel Network, an outreach ministry of Calvary-by-the-Sea Lutheran Church. Pacific Health Ministries assists in the ministry with the first two of these groups.

The groups had requested which items they needed most. On Oct. 9, volunteers divided all the items collected into batches to be taken to each site.

Individuals at the different sites re-



CAITILIN EMBREE

**Wink and Carol Arnott of St. John's Lutheran Church, Kailua, pack up toiletries for distribution to O'ahu's needy as part of Operation Backpack, a joint Episcopal/Lutheran ministry.**

ceived a tote bag (hence the name "Operation Backpack") for filling with whatever items were needed.

In 2004, Operation Backpack gave out more than 500 tote bags. Caitilin Embree, of St. Christopher's, Kailua, one of the organizers, says that this year they had 390 totes, but many more than that for some of the items — for example, 600 bottles of

shampoo.

Operation Backpack began as an outgrowth of "Christmas Child," in which items were collected and sent overseas. The Rev. Peter Champion, of Emmanuel Church, Kailua, and Pastor Ruth Peterson from Joy of Christ Lutheran Church, Aiea, decided to start a similar program for distribution to individuals on O'ahu.



KAY KUNISAWA

**Joy Webster displays some of the food available from the Food Pantry at St. John's, Kula. Each weekend, volunteers prepare donated food for distribution to the needy.**



CAROL CONNELL

**The Rev. Alison Dingley, Priest-in-Charge of St. Stephen's, Wahiawa, hands a check from the Diocese's Mission Fund to St. Stephen's Food Pantry manager Harris Bonnell.**

## Mission Fund helps hungry of Hawai'i

In August, nine agencies serving the hungry in Hawai'i received more than \$36,000 from the Episcopal churches in the state, through the Diocese's annual Mission Fund. The gifts ranged from \$3,600 to \$4,500, based on how many people the agency serves. The agencies, which had been nominated by Episcopal congregations familiar with their ministry, are as follows:

- Kokua Food Basket, St. Matthew's Church, Waimanalo
- St. Patrick's Catholic Church Outreach Center, Palolo
- St. Stephen's Food Pantry, St. Stephen's Church, Wahiawa
- Saving the Food Basket, food for people living with HIV/AIDS
- Molokai Salvation Army
- St. John's Food Pantry, St. John's, Kula
- Maui Salvation Army
- Hale Ho'omalu, Kapa'a
- St. Benedict's Catholic Church, Kona

Begun in 2003, the Mission Fund is the Diocese's annual collection during the 50 days of the Easter season. Each year, the Diocese chooses a purpose or project for the Mission Fund from one of three mission foci: within the Diocese of Hawai'i, within the State of Hawai'i, or in the international community. This year the Diocesan Council chose the mission focus to be helping the hungry of Hawai'i.

## Katrina

CONTINUED FROM FRONT PAGE

a week of outreach from October 4-11 in Bogalusa, La. They renovated the home of a disabled woman, Miss Dorothy, and helped with other projects in Bogalusa. Before they left, Grace Church collected an outreach offering and Bibles to be distributed by the team.

The younger members of the Diocese also showed a desire to help. Megan and Colton Sowers, members of the Sunday school at Trinity By-the-Sea, Kihei, Maui, suggested that the church collect stuffed animals to send to children in the Gulf. So far the church has four dozen animals that they are sending to a parish in Arkansas that is helping Katrina refugees.

Some congregations, such as Holy Nativity, Honolulu; St. Christopher's, Kailua; and St. Nicholas, Kapolei, are establishing relationships with individuals or churches affected. St. Christopher's is one of five "Adopting Congregations" of St. Thomas' Church in Diamondhead, Miss.

A teacher at Holy Nativity, Vicky Morrison, formerly taught at the East Hancock Elementary School in Kiln, Miss., a town near Diamondhead. Morrison has been in touch with the principal in Kiln and is hand-delivering a check for \$15,000 from Holy Nativity to be used for school supplies for the children. The money comes from a total of \$35,000 that Holy Nativity has raised so far: \$25,000 from an anonymous donor and \$10,000 from a donation from their Thrift Shop.

In addition, the Thrift Shop will donate the entire proceeds from their Holiday Festival on November 5, which in the past has yielded between \$15,000 and \$20,000.

### Go to:

For a complete list of responses by the congregations of the Diocese: [www.episcopalhawaii.org/ViewArticle.php?key=305](http://www.episcopalhawaii.org/ViewArticle.php?key=305)

## Chaplaincies office coordinating effort for companion relationships

In response to Hurricanes Katrina and Rita, the Office of the Bishop Suffragan for Chaplaincies of the Episcopal Church is coordinating companion relationships between Episcopal dioceses, congregations, and institutions.

The system, called "We Will Stand With You," which is supported by the Diocese of Hawai'i, was outlined Sept. 22 during the fall meeting of the House of Bishops.

### Go to:

For more information: [www.ecusa-chaplain.org/wswy\\_portal.html](http://www.ecusa-chaplain.org/wswy_portal.html)

# Priory School receives accolades for fundraising fast

The Priory School recently received a special plaque from World Vision for their 2005 participation in that agency's 30-Hour Famine. World Vision thanked the participants for being one of their best 30-Hour Famine groups in the nation and one of the highest fundraisers for the 2005 30-Hour Famine. The group raised \$5,138.02.

Thirteen Priory students fasted on March 21-22, 2005, during Holy Week, but many more students participated in other ways. They used the event to raise awareness about hunger and to help the hungry. From fifth grade up, there was a contest between the classes to see which class could collect the most money. The winning class in each of the middle school and high school was rewarded with a pizza party.

The 13 girls who fasted made information signs about hunger, which they took downtown at lunch hour, along with plastic jugs for collecting donations. During the lunch after the Chrism Mass on March 22, the clergy of the Diocese heard a presentation from the students and offered donations. (The students still had about an hour to go before they could eat.) The group also gave sandwiches, which they had made, to people who are homeless at Ala Moana Beach Park.

Another activity demonstrated how easy it is to fall into the ranks of the hungry. The group of 13 students divided into "family groups." Each "family" was given the formula for figuring the amount they would receive in welfare and food stamps. They then read the classifieds to find housing and figured out monthly expenses. They computed how much money they could spend on food per day and then per meal. Each family group went shopping at Safeway with a list of how much they could spend for one meal, which the Rev. Susan Champion, Chaplain of the Priory, then purchased.

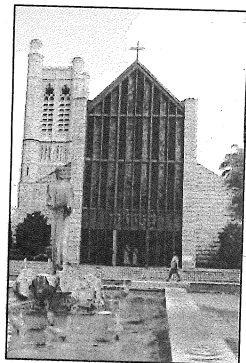
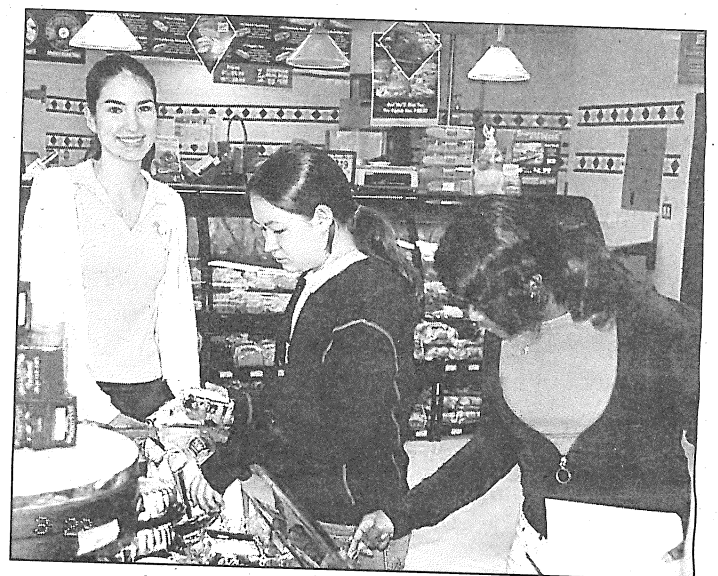


Top: Priory students participating in a 30-hour fast gather at Ala Moana Beach Park after serving sandwiches they had made to those who are homeless. L to R: Malia, Mimi, Angela, Emily, Misha, Stephanie, Sabrina, Minone, Shanna, Michelle, Emelia, and Kaitlyn.

Bottom left: Gia, Shanna, and Angela make signs and "money collectors" (out of plastic jugs) to collect money downtown at lunch hour during their efforts to raise awareness about hunger.

Bottom right: One "family group" shops for a meal on the money they had left over after computing how much they would need for housing and other regular expenses if they were living on welfare and food stamps.

PHOTOS BY THE REV. SUSAN CHAMPION



## Happenings at St. Andrew's Cathedral

Worship and special observances for all people in the Episcopal Church throughout the state.

### St. Andrew's Cathedral

Corner of Queen Emma Square  
and Beretania Streets in Honolulu  
808-524-2822

#### Organ Recital and Choral Evensong

Free. 7:30 p.m.

Nov. 6

#### Lessons and Carols

Free. 7:30 p.m.

Dec. 4

#### Carols at St. Andrews

Free. 7:30 p.m.

Dec. 9

## A different CPR training

No, not the usual kind, but a Christ-Powered Revival for senior high students, grades 9-12, at Camp Mokule'ia, O'ahu, on December 9-11. The retreat is about setting hearts on fire with the new breath and life God offers us in Jesus Christ. It's about becoming authentic followers of Jesus and bringing God's revival to the world.

The cost is \$80 per person. Some scholarship money is available. Register by November 11.

### Go to:

For a poster, forms, and contact information, see the Youth and Young Adults page at [www.episcopalhawaii.org](http://www.episcopalhawaii.org)

## COMING SOON

(EVENTS AROUND THE DIOCESE)

[www.episcopalhawaii.org/calendar/calendar.php](http://www.episcopalhawaii.org/calendar/calendar.php)

### NOVEMBER

- Nov. 3 Honolulu Clericus, 10 am, St. Peter's
- Nov. 5 Emerging Generations Commission meeting, MacCray Center, 10 am-3 pm
- Nov. 6 Cathedral Evensong, 7:30 pm
- Nov. 11-12 Planning for Tomorrow Conference
- Nov. 12 Chocolate Extravaganza, Emmanuel, Kailua
- Nov. 13 World Hunger Sunday
- Nov. 18-19 Diocesan Council orientation and meeting, Camp Mokule'ia
- Nov. 24-25 Thanksgiving Holiday, Office of the Bishop closed

### DECEMBER

- Dec. 1 Honolulu Clericus, 10 am, St. Peter's
- Dec. 3 Emerging Generations Commission meeting

- Dec. 4 Lessons and Carols, St. Andrew's, 7:30 pm
- Dec. 8 Resource Development Dept. meeting, 11:30 am
- Dec. 9 Carols at St. Andrew's, 7:30 pm
- Dec. 9-11 Senior High Retreat
- Dec. 10 Deacons Community meeting
- Dec. 11-13 Advent Clergy Conference

### JANUARY

- Jan. 2-3 New Year's Holiday; Bishop's Offices closed
- Jan. 5 Honolulu Clericus, 10 am, St. Peter's
- Jan. 6 Resource Development Dept. meeting, 11:30 am
- Jan. 12 Commission on Ministry, 2 pm
- Jan. 13-15 VOCARE
- Jan. 16 Martin Luther King Jr. holiday; Bishop's Offices closed
- Jan. 21 Council Dept. meetings, 9 am
- Jan. 21 Diocesan Council, 12:30 pm

For a full schedule of events, activities, and meetings around the Diocese, check out the Calendar of Events on [episcopalhawaii.org](http://episcopalhawaii.org). Updated regularly, event submissions are welcomed.