

Hawaiian Church Chronicle



VOLUME 102, No. 10

THE NEWSPAPER OF THE EPISCOPAL DIOCESE OF HAWAII

DECEMBER 2003/JANUARY 2004

Now is the time to move forward



Representing the "twentysomething" generation, Raquel Vea, center, was the second youngest delegate to attend the annual meeting. A delegate from Resurrection Episcopal Church in Hilo, Hawai'i, Vea was joined by delegate, senior warden Fredista Manuel, left, and church treasurer, Maria Domingo, right.

PHOTO BY SARAH T. MOORE

Convention reflects on present, eyes future

By Sarah T. Moore

CHRONICLE EDITOR

Amidst reports of decreasing membership and a small youth presence, Episcopalians gathered from across the islands to talk, strategize, and hear a challenge to move this church into 21st century Hawai'i.

In a model to provide time to talk-story, delegates of this 35th Annual Meeting of Convention gathered twice in small groups to listen to one another and present their views on where the church is headed, based on the Strategic Plan Task Force information and how decisions made at General Convention, including issues of sexuality, will affect the church in Hawai'i.

"Even though in terms of business we didn't do much, the presentations, discussions and conversations were valuable," said the Rev. Alison Dingley of St. Stephen's, Wahiawa, O'ahu. "I think we did a good job of setting the stage for the work we will do in the coming year."

And, if delegates take to heart what they heard from the bishop, the year ahead should be one of movement and momentum.

"We have talked about change long enough," said Bishop Richard S.O. Chang in his opening address Oct. 24 at St. Andrew's Cathedral. "Now is the time for decision and action. We need to stop whining, complaining, and blaming. We are no longer the Missionary District of Honolulu. We must truly become the Episcopal Diocese of Hawai'i. Every congregation, every baptized member, must be held responsible to engage God's mission."

Dwindling numbers

Delegates heard information that made them take notice of a shrinking church. Chang spoke to a diocese whose member-

Stark reality and immediate challenge

By Sarah T. Moore

CHRONICLE EDITOR

"Who is missing from this gathering?" Bishop Richard S.O. Chang asked the more than 200 delegates at the 35th Annual Meeting of Convention of the Diocese of Hawai'i in his opening address at the gathering in Tenney Theater of St. Andrew's Cathedral. "Why weren't there young people par-

For the Bishop's address, go to:
www.episcopalhawaii.org

ticipating in the liturgy? Look around."

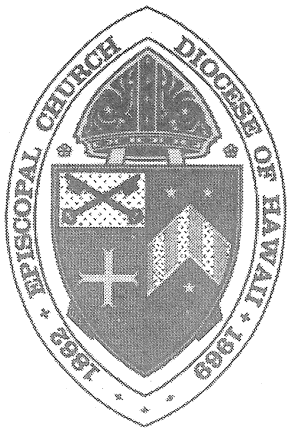
"As long as we are blind to the ministry needed for and by younger generations we will be

Continued on Page F

Continued on Page G



266,305
H3/3



Hawaiian Church Chronicle

VOLUME 102, NUMBER 10
DECEMBER 2003/JANUARY 2004

The Rt. Rev. Richard S.O. Chang,
Bishop

229 Queen Emma Square
Honolulu, Hawai'i 96813-2304
Telephone: (808) 536-7776
Fax: (808) 538-7194

Episcopal Life: The Hawaiian Church Chronicle is prepared 10 times each year by the Episcopal Diocese of Hawai'i and published by the Domestic and Foreign Missionary Society, Inc. (ISSN 1050-0057). Gift subscriptions available. Periodicals postage paid in New York, N.Y., and additional mailing offices.

POSTMASTER: Send changes of address to Episcopal Life Subscription Office, P.O. Box 1337 Bellmawr, N.J. 08099-1337

Change of address can also be made via email to:
elife@pubinfocenter.com

Sarah T. Moore
Editor

Elizabeth House
Layout

The Chronicle Editorial Board:
Ms. Arlene Lum
Ms. Patricia Osgood

The Hawaiian Church Chronicle is the official news publication of the Episcopal Diocese of Hawai'i. All policy, editorial and administrative decisions are under the direction of the editor, in consultation with the Bishop and the Editorial Board.

The Chronicle welcomes suggestions, story ideas, comments and opinions from its readers. Send articles, letters, news and photographs to: Sarah T. Moore, Editor, Hawaiian Church Chronicle, 229 Queen Emma Square, Honolulu, HI 96813-2304.
E-mail: sarahmoore@earthlink.net
Telephone: (808) 536-7776 ext. 126

The Chronicle does not assume responsibility for the return of photographs or manuscripts.

February issue deadline:
January 5

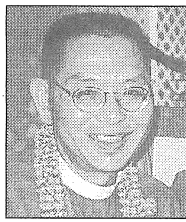
Be transformed by God, one another

Dear Sisters and Brothers in Christ,

"And the Word became flesh and lived among us, and we have seen his glory, the glory as of a father's only son, full of grace and truth." John 1:14

During the past few months I have made several trips to New York for meetings of the Presiding Bishop's Council of Advice. We had several conference calls to discuss a wide variety of issues before we met in New York for the first time. What a difference it made for the ten of us to meet face-to-face for the first time seeing each other's expressions and being able to continue conversations after the end of the meeting's agenda. Being present to each other in the same room was very different from the conference call as conducted our business. The sterility of the conference call was transformed by our being physically present to each other. Laughter seemed heartier, and the pensive moments of silence carried a heavier weight.

We all find it rewarding when we meet someone face-to-face for the first



**The Right Rev.
Richard S.O. Chang**
BISHOP OF HAWAII

time after having dealing with him or her only over the telephone or the Internet. "It's so good to put a face to that voice" is the common refrain heard at those first meetings. These words were heard at the Annual Meeting of our Convention in October since many of our commissions have been meeting by conference call. Our appreciation for the other members of our diocesan family is greater because of seeing others in the flesh rather than a voice over the telephone.

By the Incarnation, God comes in the flesh to His Creation. The Word made flesh dwells among us. We know the immense love of God for each of us through the Incarnate Word, Jesus Christ. God chooses to no longer be a distant presence in our lives. God assumes our humanity that we might

know the fullness of God's love for us. The joy of the shepherds in experiencing the Incarnation overcomes their fears. The power of the Incarnation transforms all who would come into the presence of Jesus, the Son of God. The Holy Family and the shepherds were the first to be transformed by the gift of God's Son to the world.

May we come to meet the Incarnate Son God this Christmas. May we be transformed by the power of God's Love as evidenced in the Incarnation. May the presence of the Word made flesh give us the courage and hope to overcome all fears in the new year. May we not be distant from each other and from those who have not heard the story of the Incarnation but be present to them. Let our witness to the Gospel be truly incarnate that all may believe that Jesus Christ, our Lord and Savior, is the Son of God. A Blessed Feast of the Incarnation!

"And the Word became flesh and lived among us, and we have seen his glory, the glory as of a father's only son, full of grace and truth." John 1:14



Breaking open to Christ during Christmas season

"I am a part of all I have met," writes Tennyson in *Ulysses*. Few words express better the feeling I embrace as we gather as a diocese at the annual meeting. Greeting people from all walks of life, representing diverse experiences and passions, opens us anew as we encounter one another. For some, in religious parlance, it may be encountering the holy in the other, for we all are made in God's image.

This 35th Annual Meeting of Convention of the diocese broke open a new awareness of our diversity: several languages were used in our worship and the liveliest discussion on the floor was about *mana*, *malama* and *pono*, Hawaiian words and Christian concepts, that all agreed by vote, should now be part of our Episcopal awareness.

When you read the lead story in this Christmas issue of *Episcopal Life*, you will find I was able to contribute some images of Hawai'i's life to expand Episcopalians' awareness of how we as a church, are beginning to reflect the many cultures in our midst.

Yet even here, much more needs to be done as we strive to become the church many believe we should be for a multicultural society of the 21st century.

We in Hawai'i have more opportunities than most to learn from other traditions. We are a crossroads of Christians and other faiths from countries such as Japan, the Philippines, Samoa, Korea,



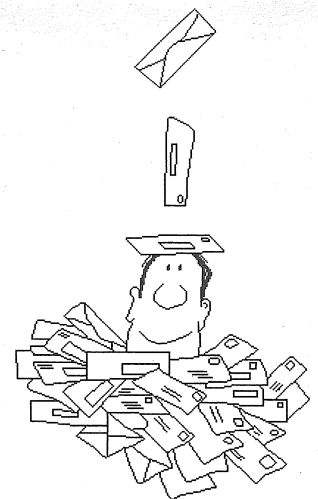
Sarah T. Moore
CHRONICLE EDITOR

China, Portugal, and Vietnam, not to mention Hawai'i itself. Each brings richness to our awareness of faith. But are we listening?

The Christmas star is an image long with us, often more familiar in our liturgical season of Epiphany as we follow the wise men to the baby Jesus' birth site. However, I have learned that for members of St. Paul's, our Filipino congregation in Honolulu, stars, *paroles*, play a large part in the Christmas observance and their household decorations and festivities. What better place to reflect on stars and their place in our faith than on our island in the Pacific, with a canopy of open sky.

How many journeys can our faith — its images, music, and words — take us on in our minds and hearts as we open ourselves to the languages, customs, and souls of the world's cultures?

When we become aware of how others embrace Christianity from a different perspective, how that may help us see anew Christ breaking into the world this season!



Letters to the Editor

The *Hawaiian Church Chronicle* would like to publish your views and comments on issues and events in the diocese. We would also like to hear your response to articles published in *The Chronicle*.

Letters must be signed and must include a telephone number and email address if applicable.

Send letters to:
Letters
Hawaiian Church Chronicle
229 Queen Emma Square
Honolulu, HI, 96813

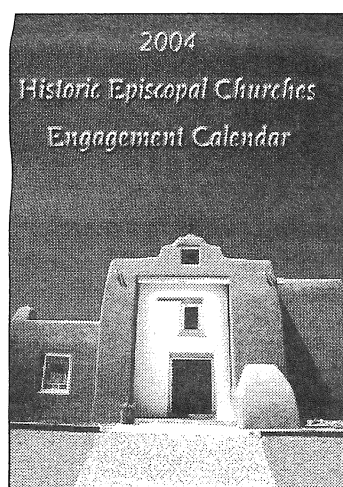
Email:
stmoore@episcopalhawaii.org
Please send letter in body of email and as an attachment.



PHOTO BY SARAH MOORE

Clergy of the Episcopal Diocese of Hawai'i gathered before the opening Eucharist for the 35th Annual Meeting of the Convention of the diocese. Left to right they are: Front row: Barbara Coan, Lynette Schaefer, Frank Chun, Patricia Leo, Eleanore Akina, Richard Chang (bishop), Anthony Litwinski, Imelda Padasdao, Jodene Hawkins, Heather Mueller-Fitch Middle row: Morley Frech, Robert Fitzpatrick, Randolph Albano, Honey Becker, John Turner, David Moore, Teresa Bowden, John Holmes, Ricky Melchor, Hollis Wright, Dale Hathaway, Robert DeWolfe, Carol Arney, Ann McElligott, Elizabeth Beasley, Alison Dingley, Alberto Alarcon, Joseph Carr, Elizabeth Zivanov, Peter Champion, Darrow Aiona, Marvin Folz, Cass Bailey. Back row: Leonard Howard, Patton Boyle, Gerhard Laun, Walter Stevens, Lance Horne, Susan Champion, Walter Harris, John Connell, J. Hollis Maxson, Gregory Johnson, Gerald Gifford, John Millen, Thomas Van Culin, Kenneth Snyder, Jan Rudinoff, David Kennedy, Donor MacNeice, G. LaRue Downing.

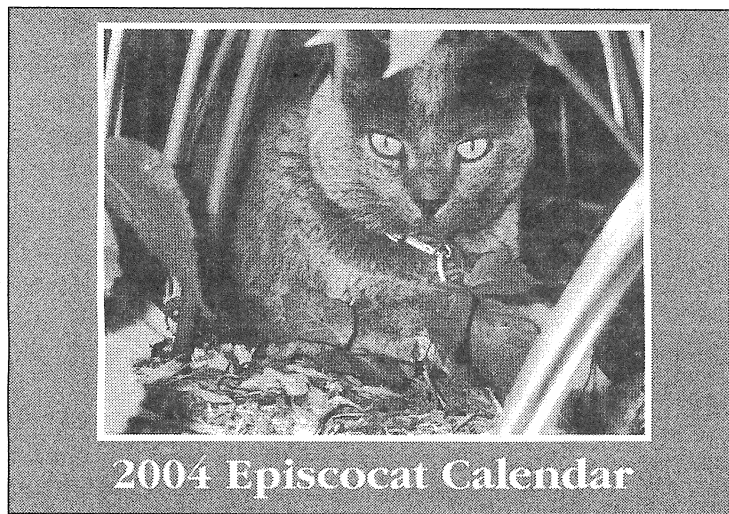
Christmas gift-giving ideas



The 2004 Historic Episcopal Churches Engagement Calendar

The 14th edition includes photos, stories and histories of 53 churches each year. This 2004 calendar includes an entry of St. Peter's, Honolulu, founded in 1886.

Cost: \$14.95



The 2004 Episcocat Calendar

Whimsical cat photos, captions each month Cost: \$7.95

A limited number of both calendars are available in Hawai'i from Willis Moore, 521-7779 or e-mail, willishamoores@hotmail.com.

For other orders, send check or mail order to: National Episcopal Historians and Archivists, 509 Yale Ave., Swarthmore, PA 19081. Add \$2 extra for postage and handling to Hawai'i.

Diocesan Leaders elected by 2003 Convention

Elected by Convention

Diocesan Council:

Laity:

Wallace (Bud) Doty-2 yrs
Rhoda Hackler-3 yrs
Leslie Isaki-3 yrs
Relda Loomis-1 yr
Bill Lucas-3 yrs
Willis Moore-3 yrs
Richard Gerage-3 yrs

Clergy:

Randolph Albano-3 yrs
Teresa Bowden-1 yr
Anthony Litwinski-2 yrs
Hollis Wright-3 yrs

Regions

Central Oahu-Duane Leach
Kauai-Richard Schulz
West Oahu-Darlene Zarkar
Windward Oahu-Nancy Rowe

Standing Committee:

Laity: John Decker
Clergy: Liz Zivanov

Cathedral Chapter:

Clergy: David Kennedy

Secretary of Convention:

Nancy Rowe

Appointments at Convention

Appointed by Bishop Chang, confirmed by Convention

Chancellor: John A. Lockwood

Vice Chancellor: Walter Beh, II

Historiographer: Stuart Ching

Registrar: Jan Horimoto

Commission on Ministry

Laity: Kala Holden

Clergy: Ricky Melchor

Commission on Episcopal Schools

Laity: Sukhdev (Su) Contee

Clergy: Peter Champion

Diocesan Compensation Review

Laity: Kathy Bommersbach

Clergy: Paul Kennedy

Twelfth Annual Candlelight Christmas Concerts

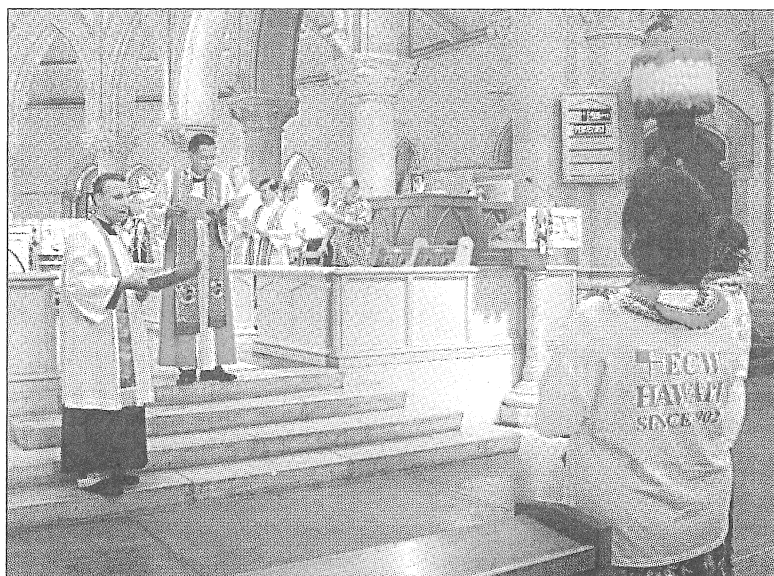
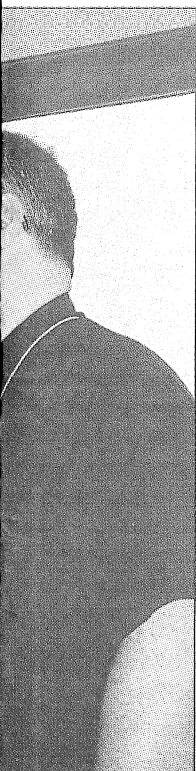
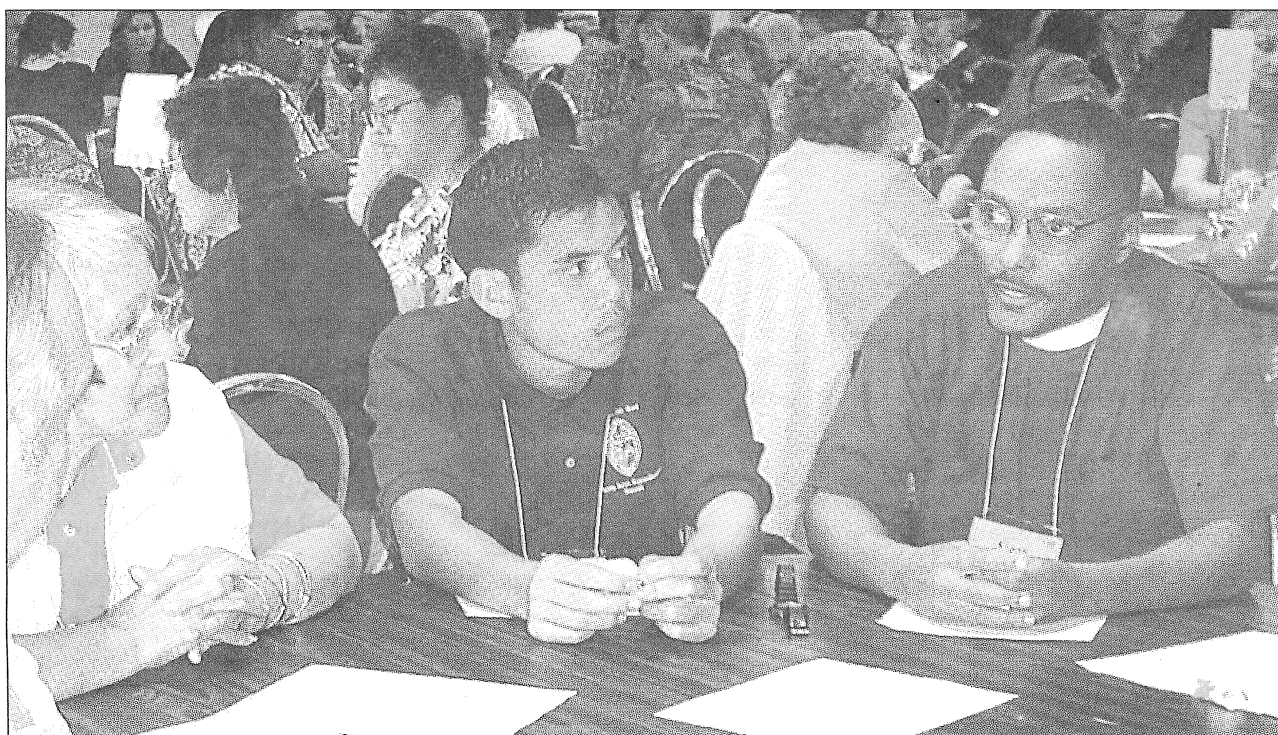
Presented by Hawaii Vocal Arts Ensemble,
Directed by Timothy Carney

Saturday, Dec. 13 at 7:30 p.m.

Sunday, Dec. 14, at 4:00 p.m.

St. Andrew's Cathedral at Queen Emma Square in Honolulu

Tickets: \$17.50 general; \$35 preferred seating;
\$12.50 seniors and military; \$5 for students elementary through college.
To reserve tickets call 561-9059



Glimpses of 35th Annual Convention. Top row photos, left to right: Imelda Padasdao enjoys ECW lunch with Maria Domingo, Resurrection, Hilo; Delegates gather at opening session in Tenney Theater at St. Andrew's Cathedral; the Rev. Cass Bailey, St. Christopher's, Kailua, facilitates table discussion on General Convention issues. Second row photos, left to right: Ryan Kusumoto, chair of the young adult commission, speaks on ministering with his age group; Delegates of Trinity by the Sea, Maui, listen to deliberations; Members of St. Paul's, Honolulu, enjoy refreshments at the cathedral; Scarlett Ritte, from Grace Church on Molokai, says, "We need more Hawaiians," while supporting passage of a resolution incorporating Hawaiian Christian concepts in the diocese. Third row photos, left to right: Clergy recess at convention Eucharist; Marvin Foltz, Good Shepherd, Maui, listens at a small group session while writing their responses for Strategic Task Force information; Bishop Richard Chang and Canon Robert Fitzpatrick receive United Thank Offering ingathering from Episcopal Church Women at opening Eucharist.

For more photos: Go to www.episcopalhawaii.org

Spain Pilgrimage invites girls

A pilgrimage and tour of Spain is offered to girls in grades 8-12 this 2003-2004 school year.

Sponsored by St. Andrew's Priory School, the trip is from July 1-Aug. 2. The total cost, including transportation, hotels, breakfast and dinner, and all admissions, is \$4169.

The itinerary includes two weeks hiking on the ancient pilgrimage trail to Santiago de Compostela, where pilgrims may meet young people from Europe and all over the world.

The second two weeks are an in-depth two-week tour of Spain led by EF Tours. Relax after the trek while touring the great sites of Spain, including day trips to Gibraltar and Morocco.

All tour members must participate in training hikes and community building on designated Saturdays from January-June.

Tour Leaders are the Rev. Susan Champion, St. Andrew's Priory School Chaplain and Lisa Manos, Priory School Spanish Teacher

For more information, call Mother Susan Champion at 532-2402, or e-mail her at schampion@priory.net. Sign up deadline: December 15.

The history of Santiago:

The name Santiago goes back to the Apostle James (Saint James=Santiago) who went to this most northwestern part of Spain to preach and convert people to Christianity.

After returning to Palestine in 44 A.C., he was taken prisoner by Herodes Agrippa and tortured to death. The king forbid to bury him, but in the night Jacob's disciples stole the body and brought him, in a sarcophagus of marble, on board of a small boat. The current of the sea drove the boat to the Spanish coast, into the port of the Roman province's capital, Iria Flavia. Here the Apostle was buried at a secret place in a wood.

Centuries later, in 813, the hermit Pelayo listened music in that wood and saw a shining. For this shining the place was called, in Latin, "Campus Stellae," field of the star, name that was later on turned into Compostela.

Bishop Teodomiro, who received notice of that event, instituted an investigation, and so the tomb of the Apostle was discovered. King Alphonse II declared Saint James the patron of his empire and had built a chapel at that place. It is reported that from then on Saint James did several miracles, even that he fought side to side with King Ramiro I in the decisive battle against the Moors.

More and more pilgrims followed the way of Santiago, "Camino de Santiago," and the original chapel soon became the cathedral of the new settlement, Santiago de Compostela.

From <http://www.red2000.com/spain/santiago/history.html>

The art of chocolate celebrated at Emmanuel

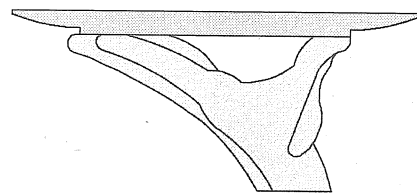
By Peter Carson

Twinkling lights, flowers and greenery gave a festive air as the Church of the Emmanuel opened its doors to the public Oct. 4 on its first annual Chocolate Extravaganza – A Celebration of All Things Chocolate.

An unbelievable assortment of chocolate items was displayed. Judges had a difficult time getting to and tasting all of the items entered into the contest. With names such as Sylvia's Fudge Cake, The Chocolate Lady's Amaretto Truffles, Black Bottom Cups, Chocolate Almond Cream with Fudge Sauce, Boca Negra, Mound Bars, Chocolate Covered Cherries there were many more sinful sounding and tasting wonders.

Tasting 21 entries in four categories, the People's Choice award went to Muriel Seto's Chocolate Almond Cream with Fudge Sauce.

At least 30 other chocolate confections were donated by hotels (Royal Hawaiian's Chocolate Strawberry Tarts), restaurants (3660's



Chocolate Truffles), bakeries (Ted's Chocolate Haupia Pies) and individuals (not entered into the contest).

Musicians the Rev. Eleanore Aki-na, Guy Imoto and Keoki McAuliffe, Joe Pettit and the University of Hawaii Chamber Singers and Heidi Shimada from the Priory School entertained. The Rev. Susan Champion closed the evening with oldies but goodies singalong.

A silent auction included hotel and restaurant gift certificates (from the Big Island Candy Company), wine and more.

The event raised over \$2,400 for Emmanuel and Habitat for Humanity and everyone had a sinfully wonderful time. Please come out and join us next year by entering your favorite chocolate item or just come to indulge your passion for chocolate!

MEDITATION BY PUA HOPKINS

Embrace Hawaiian, Christian concepts

Pua Hopkins, retired associate professor of Indo-Pacific Languages at the University of Hawaii and longtime member of Native Hawaiian Commission, presented the following to introduce a resolution to diocesan convention (see box at right). The resolution passed with enthusiasm.

The resolution before you perpetuates the legacy of our diocesan patron saints King Kamehameha IV and Queen Emma, by incorporating three key Hawaiian concepts that were part of their heritage into the life and work of the diocese.

The first is that all aspects of God's creation are imbued with *mana*, spiritual value that comes from being created by God. Care must be taken to respect the *mana* of the land and sea, the plants, the animals, other people and most important, the *mana* of God, the Creator and source of all *mana*. Our own *mana* should not be neglected or misused.

The second concept derives from the first. As humans created in God's image, we are responsible for respecting, protecting and preserving God's creation and its *mana*. In the language of the Church, we call this "stewardship." In Hawaiian, we call it *malama*. *Malama* is a call to action. Worshipping God, using god's gifts wisely, taking care of all aspects of our health, protecting the environment, caring for and about others — these are some of the ways we *malama* our relationships with God and God's creation. These relationships nurture us in turn. The God we thank and praise sustains and supports us; the body and spirit we treat properly serve us so we can do God's work in the land and sea that we care for feeds us physically and spiritually; the person who is respected and cherished meets his obligations to us in

Be it resolved...

Resolution to 35th Annual Meeting of Convention from Commission on Native Hawaiian Ministry

Be it resolved, 1) that the Episcopal Church in Hawaii honor its unique heritage from the legacy of its founders, King Kamehameha IV and Queen Emma, by incorporating the Native Hawaiian Christian spiritual concepts of *mana*, *malama* and *pono* into the overall life and work of the church in all areas of ministry in the diocese; and 2) that the Commission on Native Hawaiian Ministry work with other diocesan bodies to prepare a plan of implementation to be presented to Diocesan Convention in 2004.

return. *Malama* is about our loving reciprocal relationship with God and God's creation.

The third concept is the state we achieve when we successfully *malama* the *mana* in all of creation. This state is *pono*, the righteousness that is the kingdom of God realized on earth when all aspects of God's creation are in right relationship. As Christians, we strive to be *pono*. And when we fail, we are redeemed by God's gift of his Son. Through him, we are forgiven and freed to try again.

This resolution calls the Diocese of Hawai'i to recognize our unique heritage by incorporating the concepts of *mana*, *malama* and *pono* into our life and work as a community of God. It calls us to keep this vision of God's kingdom before us as the Strategic Planning Task Force and other diocesan bodies do their work.

The Commission on Native Hawaiian Ministry recognizes that there will be questions about how this can be implemented and what this will mean on a day-to-day basis in our various diocesan ministries. It stands ready to be part of open and honest discussions as it works together with all who are interested in developing ways to make this a living legacy from our patron saints.

Bishop's address: Reality, challenge

CONTINUED FROM FRONT PAGE

convicted by the absence of youth and young adults. How must we change to allow other voices to be heard?"

Chang spoke clearly about his "yes" vote on the consecration of the bishop of New Hampshire at General Convention, yet was also firm to uphold the classical understanding of Holy Matrimony. He also said he would not allow same sex blessings in this diocese at this time.

He spoke to a diocese that is shrinking but organizing to identify tools for growth and renewal. He reiterated his personal "three fold" vision for the diocese: (1) to convert from maintenance of the institution to the mission of the church; (2) to affirm members in their baptismal covenant; (3) and to act, by living that covenant out daily.

In his seventh year as bishop, Chang charged Hawaii is a diocese in transition. Though it is a time of great ambiguity and uncertainty that demands risk and commitment, he said, "We share them together." Change is critical to growth and it must be intentional, he said.

"There will be pain. Let us be healers and reconcilers to each other. There will be danger and uncertainty. Let us walk hand in hand in faith. There will be challenges to the unity of our community. There will also be triumphs and laughter, hope rekindled and lives transformed. Let us welcome the presence of the Risen Christ among us to give us the strength for our pilgrimage of faith together into this century, so that no one is missing among us and no voice silenced."

 **Response to the Bishop's address, go to:** www.episcopalhawaii.org



PHOTO BY SARAH T. MOORE

Episcopal Church Women leaders for 2004 are, far left to right, Sandy Leialoha, chair, Church Periodical Club; Pat Konno, chair, United Thank Offering; Rosella Newell, diocesan altar guild; Misun Hong, recording secretary; Annette Jim, church social relations; Mary Day Wilson, vice president, Kauai; Marilyn Kunitake, treasurer; Gina Perkins, second vice president; Louise Aloy, first vice president; Joyce Kim, president; Bishop Richard Chang.

Convention: Moving to new ministries

CONTINUED FROM FRONT PAGE

ship is dropping, yet is not standing still with that status quo. Casting parochial report statistics on a overhead screen, the bishop gave delegates the numbers: a 12.5 percent plunge in active baptized membership in two years and 11.8 percent drop of communicants in good standing. The diocese now numbers fewer than 9,500 baptized members.

"As long as we are blind to the ministry needed for and by younger generations we will be convicted by the absence of youth and young adults," the bishop said. "How must we change to allow other voices to be heard?"

Clearly adjusting schedules and the "way of doing business" to include a younger generation is critical. The convention also acknowledged the church's need to be more inclusive in ministering among the many cultures in Hawaii.

In a new wave, the opening Eucharist at St. Andrew's Cathedral modeled the diversity in its midst. Prayers, music, and lessons were said in Spanish, Hawaiian, Ilocano, Chinese and Japanese.

Youth, communications, equipping ministry, new models

The Diocese's Strategic Task Force reported its year long engagement with congregations and parishioners and pointed to four areas of concern: youth, young adult and family ministry; communications; equipping clergy and laity to do God's work; and new models for ministry.

Delegates broke up into groups and ended the first day by discussing how to engage these areas and begin to infuse life and growth into the diocese.

Before them also was Chang's personal "three fold" vision for the diocese reiterated in his address: (1) to convert from maintenance of the institution to the mission of the church; (2) to affirm



PHOTO BY SARAH T. MOORE

J.R. and Ervin Pasalo presented leis to Makule E Akamai awardees during Saturday's luncheon.

members in their baptismal covenant; (3) and to act, by living that covenant out daily.

No to voting on sexuality; yes, to talking about General Convention

The meeting reconvened Saturday, Oct. 25 at the Hyatt Regency Waikiki to consider resolutions, the 2004 budget, elect leaders, and discuss General Convention.

Friday afternoon delegates discussed whether to place two proposed resolutions (submitted after deadline) on the floor to address issues of sexuality and the election of a gay man as bishop of New Hampshire.

"I'm sick and tired of hearing all about this," said the Rev. Darrow Aiona, St. Mark's, Honolulu and a deputy to General Convention, at the

microphone. "There are a lot of other issues this church can do besides talk about sex."

Anna Blackwell, Parish of St. Clement, Honolulu, noted that the diocese had addressed that issue in its 1999 convention when the state of Hawai'i considered, and defeated, legalizing same sex marriage.

Delegates cast a resounding "no," knocking the resolutions off the table for action by resolution.

However, they wanted to talk. At the end of the day in a special order of business requested by members of St. Christopher's, Kailua, following a presentation by General Convention deputies, 30 small table groups, directed with facilitators, talked and listened with one another. Lively conversation included the impact of changes in ministry canons, growing the church, the confirmation of V. Gene Robinson as bishop of New Hampshire, and how the many decisions of General Convention would affect their congregations and membership.

Two resolutions

Convention considered only two resolutions: clergy compensation and Hawaiian Christian concepts. After some discussion, the resolution to increase clergy salary ranges by 3.5 percent passed.

The liveliest discussion surrounded a resolution presented by the Commission on Christian Formation and the Native Hawaiian Ministry Commission: to incorporate Hawaiian Christian concepts into the Episcopal Church in Hawai'i.

Presenting the resolution, Pua Hopkins, retired professor of Indo-Pacific Languages at the University of Hawai'i and longtime member of Native Hawaiian Commission of the diocese, said, "this resolution perpetuates the legacy of our diocesan patron saints,

King Kamehameha IV and Queen Emma, by incorporating three key Hawaiian concepts that were part of their heritage into the life and work of this diocese. Those concepts are clear and Christian": 1) that all creation is imbued with *mana*, the spiritual value that comes from being created by God; 2) that humans are created in God's image and are responsible for respecting, protecting and preserving God's creation. Called stewardship in church language, it is *malama* in Hawaiian; and 3) *pono*, the state achieved when people successfully *malama* the *mana* in all of creation — the state of righteousness when all God's creation are in right relationship.

"For many years I've prayed for this," said delegate Lysandra Pakeken of St. John-by-the Sea, Kaneohe, O'ahu. "This resolution has reached its time. It's time to take the writing on the wall and incorporate it into our Christian documents."

The Rev. Heather Mueller-Fitch, rector of St. John's, Kula on Maui, challenged herself and each of the clergy "to figure out a way to begin to use these words so they are in our hearts and souls, and bring those concepts to our congregations."

The commission will work with other groups to create a plan to incorporate such concepts and present it to the 2004 convention.

Budget

Convention approved a 2004 annual diocesan budget of \$2.2 million. However, during the budget discussion, the Rev. Joe Carr, rector of Calvary Church, Kaneohe, rose and stated that his congregation would vote against the budget, for reasons related to General Convention's decisions around homosexuality, Calvary's corresponding drop in pledged income, and inability to meet full diocesan assessment.



PHOTO BY KIMBERLY VANCE

EMOA Honorees

Honored for their longtime ministries and dedication to the Episcopal Church in Hawai'i, 21 Episcopalians received the Makule E Akamai Award sponsored by the Commission of the Episcopal Ministry on Aging (EMOA). Receiving the award this year were, left to right, front row: Jean Bruckner, Lillian Tyau, Elva Mori, Bobbie Wonder, Nancy Janczyk; Back row: Connie Santana for Ray Heimburger, Dorothy Tanibe, David Ching, Carlota Segundo, John Lee, Annie Benito, Doris Fleming, Bernice Tawarahara, Ken Fleming, Felisa Daquiaog, Gene Naipo. Missing: Dempsey Harada, Mahoenui Kwock, Paul Kusunoki, Priscilla Ho, Patricia Walter.

COMING SOON

(EVENTS AROUND THE DIOCESE)

DECEMBER

Dec. 7-9	Clergy conference Camp Mokule'ia
Dec. 12-14	Senior High Diocesan Retreat
Dec. 20	Diocesan Council
Dec. 25-26	Christmas Holiday

JANUARY

Jan. 1-2	New Year's Holiday
Jan. 16	Standing Committee
Jan. 17	Diocesan Council
Jan. 18	Martin Luther King Holiday

BISHOP'S VISITATION SCHEDULE

DECEMBER

Dec. 7.....	St. George's, Honolulu
Dec. 14.....	All Saints, Kapaa, Kauai
Dec. 21.....	Emmanuel, Kailua
Dec. 24.....	Cathedral, presiding
Dec. 25.....	Cathedral, presiding

JANUARY

Jan. 4.....	Calvary, Kaneohe,
Jan. 25.....	Epiphany Honolulu

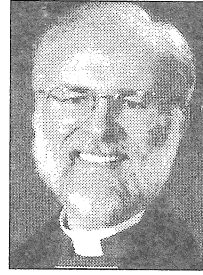
FEBRUARY

Feb. 1.....	Holy Nativity, Honolulu
Feb. 8.....	St. Stephen's Wahiawa
Feb. 22.....	St. Mark's Honolulu
Feb. 29.....	St. John's By-the-Sea Kaneohe

Experience a weekend away
with a spiritual focus

Men's Makahiki

Feb. 6-8



Worshipful Work

Keynote speaker
Gordon Scruton
Bishop of Western Massachusetts

Camp Mokule'ia
30 spaces available. Cost: \$100
Neighbor island airfare offered; contact diocese
(nminuth@episcopalhawaii.org)

Contact Bruce Fink (brucefink@hawaii.rr.com, 808-941-1722)

Neighbor island contacts:
Bill Lucas, Hawaii (WillyLucas@aol.com)
John Decker, Maui (jadecker@mauigateway.com)

Don't Miss the Boat!

A gathering for adults and youth passionate about ministry

March 20-23

Rapture Marine Expeditions

Wanted: One adult leader & two youth from each congregation in the diocese

For What: A four-day cruise around the islands

What's the catch? To establish youth ministry leadership in every church. Join this exciting trip to gain leadership training from the best! Tell stories, network, build on current ministries, hear new ideas. Fish, snorkel, sea kayak, swim, gaze at stars. Wonder. Enjoy the cruise.

Space limited. Register early.

For information: Go to the Diocese of Hawai'i website: www.episcopalhawaii.org
Call the Office of the Bishop: 808-536-7776 (Oahu); 1-800-522-8418 (Neighbor Islands, toll free)

Sponsored by the Episcopal Diocese of Hawai'i

Happening

When: February 13 – 15 (Presidents' Day Weekend)

Where: Camp Mokule'ia, North Shore

Who: All Baptized Christians Grades 10-12

Cost: \$55.00

Where do I sign up? Contact Josh Dela Cruz: (cruzjd@hgea.org) or talk to your own church youth leader!

DEADLINE FOR THE APPLICATIONS: WEDNESDAY, JANUARY 28