

Hawaiian Church Chronicle

Episcopal Life

VOLUME 101, No. 10

THE NEWSPAPER OF THE EPISCOPAL DIOCESE OF HAWAII

DECEMBER 2002/JANUARY 2003

WHAT'S INSIDE

From the Bishop

The Diocesan staff members are more than just "workers in the office."

Page B

✕ ✕ ✕

Convention coverage

► The complete text of Bishop Chang's address to the convention.

This page

► Results of diocesan elections and passage of resolutions.

Page C

► Fifteen receive the Makule E Akamai Award.

Page C

► Scenes from convention.

Pages F-G

► Bishop's sermon from Friday's Eucharist.

Page H

► ECW convention.

Page I

✕ ✕ ✕

Changing lives

St. Stephen's turns vandalism into evangelism.

Page J

✕ ✕ ✕

Thinking ahead

For Lent, consider filling a Mite box for the Episcopal Church in Palestine.

Page J

✕ ✕ ✕

Also inside:

Around the Diocese.....Page K
Ang Events.....Page L

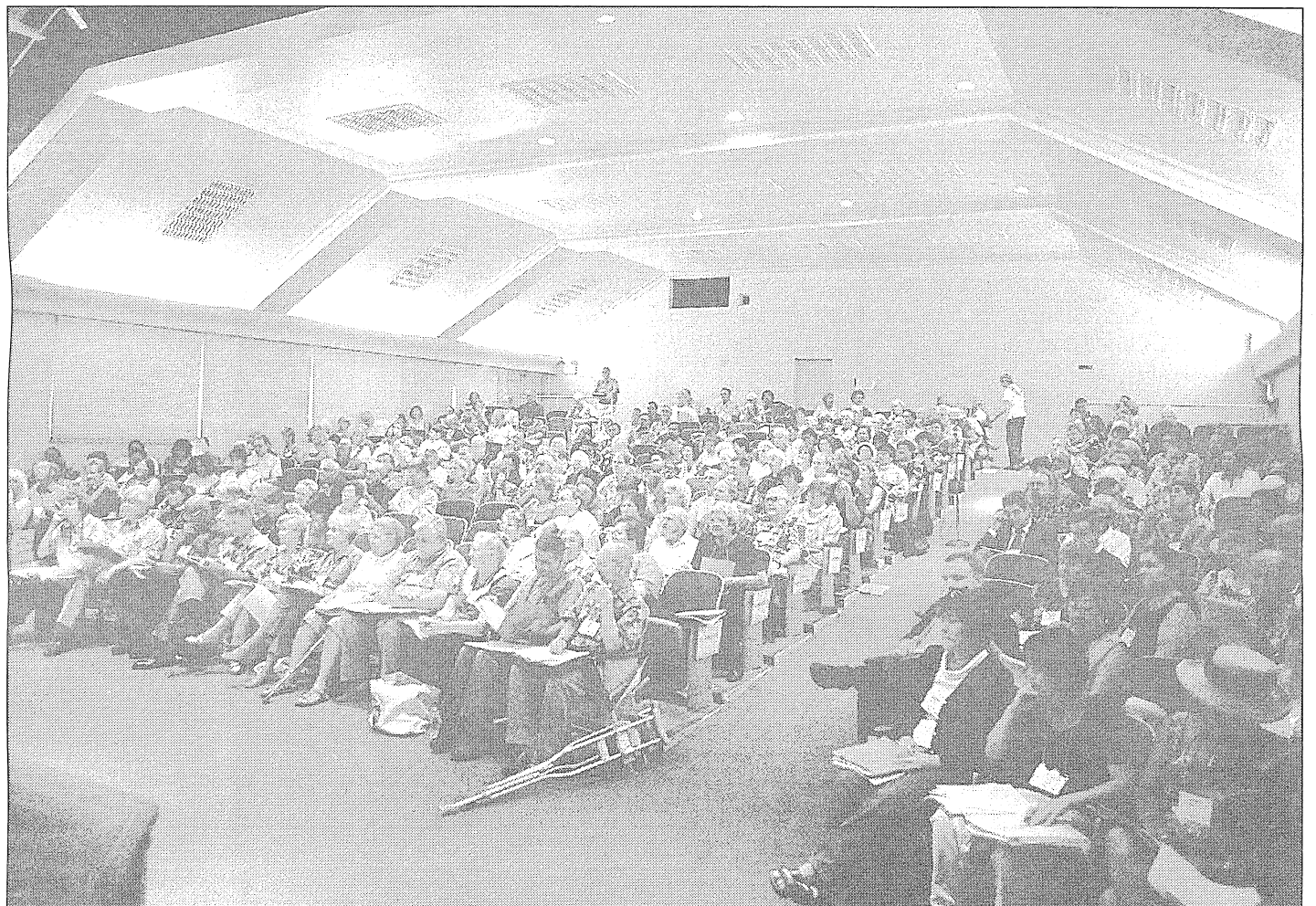


PHOTO BY ELIZABETH HOUSE

Delegates, both lay and clergy, as well as observers gather for the opening of the 34th Annual Meeting of the Convention of the Diocese of Hawai'i at Tenney Theatre at St. Andrew's Cathedral on Oct. 25.

Bishop's Address to Convention

When our United Airlines flight lifted off the runway of the Honolulu International Airport, I was faced with several critical personal decisions. I was physically, emotionally, and spiritually exhausted. Months before the beginning of my sabbatical, I could no longer pray. I could not finish my daily personal prayer of "Saving victim open wide the gates of heaven to us below..."

A pressing issue for me as we flew over the Pacific was whether or not I would announce my resignation as Bishop of Hawai'i at this Annual Meeting of our Diocesan Convention

Continued on Page D

Bishop challenges diocese for growth

✕ Proposes establishment of 'Alleluia Fund'

By Elizabeth House

CHRONICLE EDITOR

In a stirring address to the 34th Annual Meeting of Diocesan Convention, the Rt. Rev. Richard S.O. Chang challenged the diocese to grow, both in numbers and in mission.

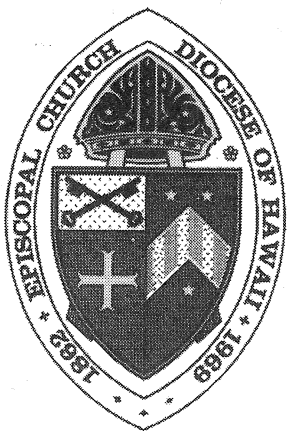
After surprising a number of people by saying that he had been

contemplating resigning as Bishop of Hawai'i for personal and spiritual reasons. But during a self-directed retreat during his recent three-month sabbatical, he said the "heaviness and darkness was lifted. As I sat in the quiet before the Eucharist, prayers began to flow. ... I left that service with a renewed commitment to a

Continued on Page C

266.305

H313



Hawaiian Church Chronicle

VOLUME 101, NUMBER 10
DECEMBER 2002/JANUARY 2003

The Rt. Rev. Richard S.O. Chang,
Bishop

229 Queen Emma Square
Honolulu, Hawai'i 96813-2304
Telephone: (808) 536-7776
Fax: (808) 538-7194

Episcopal Life: The Hawaiian Church Chronicle is prepared ten times each year by the Episcopal Diocese of Hawai'i and published by the Domestic and Foreign Missionary Society, Inc. (ISSN 1050-0057). Gift subscriptions available. Periodicals postage paid in New York, N.Y., and additional mailing offices.

POSTMASTER: Send changes of address to Episcopal Life Subscription Office, P.O. Box 1337 Bellmawr, N.J. 08099-1337

Change of address can also be made via email to:
elife@pubinfocenter.com

Elizabeth House
Editor

The Chronicle Editorial Board:
Ms. Arlene Lum
Ms. Patricia Osgood

The Hawaiian Church Chronicle is the official news publication of the Episcopal Diocese of Hawai'i. All policy, editorial and administrative decisions are under the direction of the editor, in consultation with the Bishop and the Editorial Board.

The Chronicle welcomes suggestions, story ideas, comments and opinions from its readers. Send articles, letters, news and photographs to: Elizabeth House, Editor, Hawaiian Church Chronicle, 229 Queen Emma Square, Honolulu, HI 96813-2304.
E-mail: hcchronicle@aol.com

The Chronicle does not assume responsibility for the return of photographs or manuscripts.

Editorial deadline for the February, 2003 issue of The Chronicle is January 6.

Staff more than 'workers in office'

Dear Sisters and Brothers in Christ,

It has always irritated me when people refer to the Episcopal Church Center as "815". The Presiding Bishop and his staff are more than three digits.

At our Tuesday staff meetings Bob Fitzpatrick usually led the opening devotion or reflection. On occasion I would make an offering to the gathering. This is no longer the practice. Now a different member of the staff is invited to offer the opening devotion. It is no longer the sole responsibility of Bob or me. I have been present when Celeste and Peter have opened our meetings with thoughtful reflections on transition and mission, respectively.

I tell you this so that you can see the staff of the Office of the Bishop as more than workers in an office. This knowledge about staff spirituality will hopefully make



**The Right Rev.
Richard S.O. Chang**
BISHOP OF HAWAII'I

them incarnate as persons of faith, not merely names appearing in a directory or in a budget. They are individuals whose faith is shared each day. Their devotional offerings tell us of the depth of their faith and their spiritual pilgrimage. Each member of the staff is a person of faith.

It is always a joy to hear people say to Marie or Tiare, "It's really nice to put a face to a voice over the telephone." The voice has become incarnate in the personal encounter. The experience strengthens future encounters and relationships whether by telephone, email or letter. The relationships are changed when we meet face-to-

face, or gain information that makes the stranger a friend.

At Christmas we celebrate the Feast of the Incarnation when the love of God becomes incarnate in Jesus Christ. In Christ we have met God face-to-face. We must seek to make incarnate in the lives of the people around us. Intellectual rhetoric is inadequate. As God Emmanuel comes among us to share our humanity, so too we must enter into the lives of the people to whom we would proclaim the Good News of the Gospel. Through word and deed we must seek to touch others, so that through us the love of God in Christ is made known in the world. Lucille, Bob, Nancy, Celeste, Peter, Tiare, Marie, and I are witnesses and evangelists for the Incarnate Word of God in our service to you.

Faithfully yours in Christ,
+Dick



The Chronicle wants your photos!

The Chronicle is always looking for photographs of events around the Diocese for publication.

Pictures can be sent to us either by email, by snail mail or by dropping them off at the Diocesan Office.

If you are emailing photographs, please use the highest resolution possible on your camera, and send only JPG formatted photos. The email address is hcchronicle@aol.com. Please include the name of the photographer and the names of those in the photographs in the body of the email.

If you are sending pictures through the regular mail or dropping them off at the Diocesan office, please address them to Elizabeth House, Chronicle Editor, The Diocese of Hawai'i, 229 Queen Emma Square, Honolulu, HI 96813-2304. We can use photographs, negatives or slides. Again, please be sure to include the name of the photographer and all those shown in the photographs themselves.

As a rule, photographs cannot be returned, but can be left for pickup at the Diocesan office.

Let us hear from you!

The Hawaiian Church Chronicle would like to publish your views and comments on issues and

events in the Diocese. We would also like to hear your response to articles published in The Chronicle.

Letters must be signed and must include a

telephone number for contact.

Send letters to:
Letters
Hawaiian Church Chronicle
229 Queen Emma

Square
Honolulu, HI, 96813

Email:
hcchronicle@aol.com.
Please send letter in body of email and not as an attachment.

Convention passes resolution to develop 5-year strategic plan

By Elizabeth House

CHRONICLE EDITOR

A resolution to develop a five-year strategic plan for the Diocese of Hawai'i was among the resolutions passed during the 34th Annual Meeting of the Diocesan Convention, held Oct. 25-26 in Honolulu.

Most of the discussion on the resolution centered around whether the time period for the plan should be five or ten years. The final version is as follows:

"Be it resolved, that by January 1, 2003, the Bishop shall appoint, with the concurrence of the Diocesan Council, a Task Force to develop a minimum five-year strategic plan for the Diocese of Hawai'i, in accordance with the Baptismal Covenant, that identifies essential priorities and initiatives and mechanisms for evaluation and accountability in the Diocese; and

"Be it further resolved, that a report of the strategic plan shall be presented to the congregations through area gatherings during August, 2003; and

"Be it further resolved, that a report of the strategic plan shall be presented at the 35th Annual Meeting of the Convention of the *Diocese of Hawai'i* for action; and

"Be it further resolved, that the diocesan budget of the year following the adoption of the strategic plan be structured to reflect the objectives of the strategic plan."

Other resolutions adopted by the convention included:

► A resolution to raise the 2003 clergy salary scale by three percent;

► A resolution to continue the relationship as a "companion diocese" with the Diocese of Okinawa for three more years;

► A resolution to study the feasibility of lowering the diocesan assessment paid each year by each congregation;

► A resolution to request the Bishop appoint a Chaplain for serve retired clergy and their families;

► A resolution concerning financial

disclosure and accountability from Camp Mokule'ia.

► A resolution to amend the Canons of the Diocese to appoint an assistant Secretary to the Convention;

► A resolution urging President Bush to exercise restraint in the use of first-strike capabilities against Iraq.

Other convention actions

The convention welcomed the following new or visiting clergy:

The Very Rev. Ann E.P. McElligott, Dean at St. Andrew's Cathedral; the Rev. David Moore, chaplain at Iolani School; the Rev. Elizabeth Beasley, interim rector at All Saints' the Rev. Patton Boyle, priest-in-charge at St. Peter's; the Rev. Peter Champion, priest-in-charge at Emmanuel; the Rev. LaRue Downing, interim rector at Holy Nativity; the Rev. Al Stefanik, priest-in-charge at Holy Innocents, the Rev. Jodene Hawkins, chaplain at Seabury Hall.

The convention also heard three special reports: on St. Jude's Outreach Program, on Camp Mokule'ia, and the Report of the Response to the Bishop's Address Committee.

Carol Trewman presented the special report on St. Jude's Outreach program. She spoke about how the program of outreach had rejuvenated and revitalized the small congregation of St. Jude's on the Big Island.

Bill Lucas gave the report on Camp Mokule'ia, during which Bruce Fink showed a media presentation about the camp on a large screen. Lucas said the camp has changed its focus from secular to spiritual, and has reduced the full-time staff.

Susie Davis presented the Report of the Response to the Bishop's Address Committee. The full text of that response is on page D.

Finally, the convention approved the dates for the 2003 and 2004 conventions, as follows: Oct 24-25, 2003, on O'ahu, and Oct. 22-23, 2004, also on O'ahu.

The convention adjourned around 2:30 p.m.



15 honored with Makule Award

During a luncheon at the Sheraton Waikiki on Oct. 25, fifteen parishioners from around the diocese were honored with the Makule E. Akamai Award from the Episcopal Ministry on Aging.

The fifteen people are:

Jim Beddingfield, Christ Church, Kealakekua.

Harry H.K. Choir, St.

Luke's, Honolulu. **Zenaida Cortez**, St. Paul's, Honolulu

(given posthumously). **Betty**

A photograph of the Makule E Akamai award winners is on page G.

Ewert, St. Christopher's, Kailua. **Art Kusumoto**, St. John's Kula. **Florence**

McBride Richardson, St.

Mark's, Honolulu. **Sol**

McCurdy, St. Stephen's,

Wahiawa. **David Millard**,

St. Timothy's, Aiea. **Andrew**

Morgan, St. Augustine's,

Kohala. **Lei Morse**, St.

Matthew's, Waimanalo.

James Rodenhurst,

Calvary, Kaneohe. **Juliet**

Shimabukuro, Good

Samaritan, Honolulu. **Daisy**

Smith, Holy Apostles, Hilo.

The Rev. Ernest Uno, St.

Mary's, Honolulu. **Tim**

Chong Young, St.

Elizabeth's, Honolulu.

Congratulations to all these deserving people!

Results from diocesan elections

The following people were elected or confirmed to various diocesan offices during the 34th Annual Meeting of the Diocesan Convention, held Oct. 25-26, 2002.

Elected positions

Diocesan Council:

The Rev. Alison Dingley (St. Stephen's)

The Rev. Ajuko Ueda (St. John's by the Sea)

Frank Embree (Emmanuel)

Carol Trewman (St. Jude's)

Lyn Ho (Holy Innocents)

Carol Connell (West Kaua'i)

Jim Beddingfield (Christ Church)

Regional representatives to Council:

Nancy Tourk (East Honolulu)

Lynn Reynolds (Hawai'i)

Carol Knudsen (Kaua'i)

Standing Committee:

The Rev. David Kennedy (retired)

Mary Schulz (All Saints')

Cathedral Chapter

The Rev. Alison Dingley (St. Stephen's)

Anna Blackwell (St. Clement's)

Ecclesiastical Trial Court

Susan Lee (Christ Church)

Secretary of Convention

Sandy Souza (St. Clement's)

Bishop's Appointees

Chancellor

John A. Lockwood

Vice Chancellor

Walter Beh, II

Historiographer

Stewart Ching

Registrar

The Rev. Gerhard Laun (St. Elizabeth's)

Commission on Ministry

The Rev. Elizabeth Beasley (St. James)

The Rev. Robert DeWolfe (Good Samaritan)

Arthur Kusumoto (St. John's, Kula)

Commission on Episcopal Schools

The Rev. David Moore (Iolani School)

Robert Whiting (Holy Nativity School)

Linda Oba (St. Andrew's Priory)

Diocesan Compensation Review

The Rev. Patton Boyle (St. Peter's)

Dorothy Shigemura (St. Nicholas)

AT THE CONVENTION

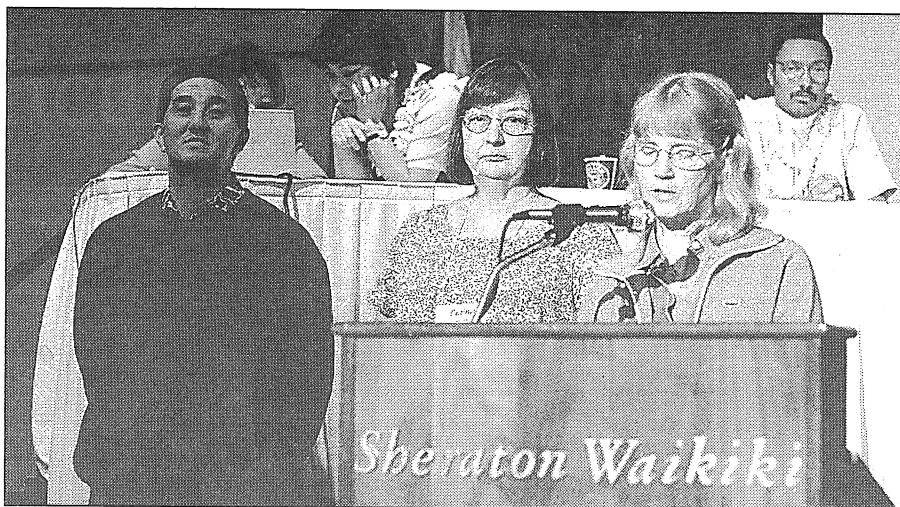
Convention responds to address

Here is the official Response to the Bishop's Address, presented by Susie Davis, pictured speaking at right along with Elaine Lucas and Wayne Shigai.

On behalf of the committee, I am presenting an overview of the regional discussions on the Bishop's address. The regional "summary of discussions" will be compiled and distributed by the Bishop's office.

What the Bishop said resonated with where we are in this convention, individually and as faith communities. We heard his passion and we want to join and share in the journey with him.

We realize that in order to be effective evangelists, we need to fan the fire within us; not always comfortable for Episcopalians. We need assistance in how to go about



unabashedly proclaiming our faith. We need to be able to talk about Jesus and to share our faith, outside of church property, beyond our comfort zone. If each of us takes evangelism to heart there will be significant growth. Numbers will not matter. Just imagine, if we are all ignited by the passion and commit to the "Alleluia Fund", how many of the varied congregation driven ministries we could undertake. We could make a significant difference.



Bishop calls for growth, mission

CONTINUED FROM FRONT PAGE

ministry of servanthood. My ministry to serve in this Diocese is not yet finished. God still has much for me — for us to do together. I have decided to remain your Bishop. I have a renewed vocation of ministry with you."

Quoting statistics from parochial reports, Bishop Chang said that average Sunday attendance, active memberships, child baptisms, adult baptisms and confirmations and receptions into the Episcopal churches in Hawai'i had all declined.

"What do these statistics provided by congregations tell us about mission?" he said. "What does this say about our vision? What does this say about our proclamation of the Gospel as missionaries? What does this say about evangelism? What does this say about Christian formation? Is this God's call? Have we decided to die?"

Bishop Chang told the convention delegates and observers about the "20/20" program adopted by the Episcopal Church at the 2000 General Convention. The program's goal is to double the size

The complete text of the Bishop's address begins on the front page of this issue.

of the Episcopal Church by the year 2020. But "we have moved in the opposite direction," Bishop Chang said.

The bishop issued a challenge to the convention to adopt a goal of increasing active membership within the Diocese of Hawai'i by 10 percent in 2003. With 10,787 active members, that would mean an additional 1,078 members next year.

The Bishop also said the Diocese needs to "put our money where our mouth is," asking for the establishment of a 10-year mission fund that would raise money for mission projects both inside and outside of the diocese. The Bishop proposed using a program developed by the Diocese of Alabama. It is called the "Alleluia Fund," since all the money is raised during the 50 days of the Easter season. This money is for mission purposes only and not part of the diocesan operation budget, or a capital funds campaign.

In order to discover the passion, it will require us to be open to change. Change in how we express our relationship with God, through music, through alternative liturgies, through whom and how we welcome people into our church. It is time for us to dispel the "frozen chosen" stereotype.

We thank the Bishop for being open and honest in sharing his spiritual journey with us. He has returned enthusiastic and feisty, ready to lead us toward becoming a community of vision. NOW!

"If we do have the 10,787 active members that we claim, and IF each gave \$1.00 per day for the fifty days of Easter between April 20 and June 8, 2003, we would have over a half million dollars for mission projects in the Diocese of Hawai'i on June 9, 2003," the Bishop said.

And, he added, if the diocese simply used the numbers of "members in good standing" instead of "active members," the diocese would still raise just over \$400,000 for mission work.

Bishop Chang said it would be important to "work together with a common resolve and vision if we are to increase our active membership by 1,078 persons in 2003, and if we are to raise \$400,000 for mission work," he said.

"Becoming a community of vision is no easy task. It involves a deliberate decision on the part of each one of us, a decision that must be accompanied by repentance, the willingness to seek God's point of view in place of our own. ... We strive to restore all people to unity with God and each other in Christ. We begin with the question, 'Do I believe that Jesus Christ is my Lord and Savior?' We must decide. You must decide."

The morning after: Reflecting on the Bishop's address

By Carol Ann Trewman

As a tug pulled a barge in the distance, my husband and I ate our breakfast, and reflected on the convention and the Bishop's address.

We talked about the approach to evangelism within our own families, and how we would let weeks go by without specifically mentioning God to our neighbors, or our loved ones. But there are so many ways to God. For my husband Cris and me, the doorways are opened with poetry, music and the sea — we would come to a sudden halt at the sound of a violin and flute playing Mozart on a San Francisco street corner.)

The "hype" in our culture substituting for passion masks otherwise good sense and re-arranges psychology, to take us further from these Stop/Think/Be moments.

From an upper-floor room of our hotel, I had watched as the palm trees flashed fuschia and teal with high-beamed spotlights and heard the music of the "Beach Boys." As this was, at one time, a favorite group of mine, we went down to the beach and saw them performing at an unadvertised, enthusiastic private party.

Remembering this, at breakfast, we watched as the barge had now disappeared. People were kicking sand, splashing water with their families and enjoyed each other's company, without pretense, all very near to God.

The mission of the church, in part, is recognizing these moments and making room for them.

As parents introduce their babies to salt water for the first time, we as Christians can teach by example-through mission. Having the courage to introduce our spiritual core to the needs of our church community, will build a clear vision for it, and for us all.

The sound of the popular group had now faded in my mind, and was replaced by the laughing group of families — families that could be members of our church(es), being spiritually fed, and feeding increasing others, in turn.

Carol Trewman is a Bishop's Committee member from St. Jude on the Big Island. She was recently elected to Diocesan Council.

AT THE CONVENTION (BISHOP CHANG'S ADDRESS TO CONVENTION)

CONTINUED FROM FRONT PAGE

(my seventh) and call for the election of a Bishop Coadjutor at the next Annual Meeting of the Convention. I did not know if I had the physical, emotional and spiritual resources to continue an authentic episcopate. I was not sure I could find the joy to continue. I had to decide what to do.

On Monday, July 7, 2002, in the chapel of Emery House, the Retreat House of the Society of St. John the Evangelist, where Dee and I did a weeklong, self-directed silent retreat, the heaviness and darkness was lifted. As I sat in the quiet before the Eucharist, prayers began to flow. Without any difficulty or hesitation, I began to pray my personal prayer and to pray for each congregation of our diocese by name. I left that service with a renewed commitment to a ministry of servanthood. My ministry to serve in this Diocese is not yet finished. God still has much for me and for us to do together. I have decided to remain your Bishop. I have a renewed vocation of ministry with you.

For the rest of that week while Dee and I experienced the silence of that place, it became very evident that I was being renewed physically, spiritually, and emotionally. I left Emery House with a strong resolve and commitment to ministry. Since my return, several people have commented on my "feistiness." It is important for me to say this to you today, so that you can have some appreciation for this address and what I believe God is calling us to do.

Presiding Bishop Frank T. Griswold wrote these words to the House of Bishops after the Interim Meeting of the House of Bishops in Cleveland, Ohio, last month: "Becoming a community of reconciliation is no easy task. It involves a deliberate decision on the part of each one of us, a decision that must be accompanied by repentance, the willingness to seek God's point of view in place of our own."

Let me read my adaptation of his words: "Becoming a community of vision is no easy task. It involves a deliberate decision on the part of each one of us, a decision that must be accompanied by repentance, the willingness to seek God's point of view in place of our own."

Community of vision

At this 34th Annual Meeting of the Convention of the Episcopal Diocese of Hawai'i, the decisions we make will determine as to whether or not we can become a community of vision. Decisions will either light the way for us to become a visioning community that sees God's point of view, or will obscure and darken the pathway to God's Kingdom. Decisions will either provide the resources and ministries for spreading and building up of God's Kingdom, or simply maintain the personal and self-serving principalities that we would call "church". We — each of us individually and collectively — must decide whether we are doing to be missionar-

ies taking the light of the Risen Lord into the world, or be prisoners of fear within the closed walls of our church buildings trying to be safe from the world. We must decide whether we are willing to grow, change, and reach out for the Risen Christ, or stay as we are and die. We must decide.

No decision of faith is easy. Decisions that witness to a faithful obedience to the Risen Christ are never easily made. To obey the Risen Christ must include self-denial, and openness to the Holy Spirit that can change and, even, play havoc with our lives. Decisions of faith will transform us. We are being asked to decide for committed costly discipleship.

It is always frightening to be unable to control the outcome of decisions. It is ever more fearful to be transformed by God's grace and be converted in our hearts and minds. It is frightening to repent because confession reveals our vulnerable broken humanity. Being repentant means standing in humble obedience before God awaiting his love and mercy. The words of General Confession too accurately describe the reality of our humanity, "we have sinned against you in thought, word, and deed, by what we have done, and by what we have left undone. We have not loved you with our whole heart; we have not loved our neighbors as ourselves."

We must begin with repentance, the willingness to seek and do God's will on earth as it is in heaven.

An invitation

Today I invite each of you as leaders to decide to make this Diocese a community of vision. Let me remind you that three years ago I offered a personal vision for our Diocese during my episcopate as Bishop of Hawai'i. I shared my desire to lead a diocese moving from maintenance to mission, a diocese where ministry is shared by all the baptized, and a diocese where the baptismal covenant is lived daily.

During my sabbatical, I came to realize that my assumptions regarding diocesan leadership, lay and ordained, and readiness for transformation, were wrong. It was personally painful to identify those places in the life of our Diocese where we could not or would not move forward from maintenance mentality to mission proclaiming unashamedly and without fear the Good News of God in Christ.

The statistics from our 2001 Parochial Reports reflect the maintenance mode of our life in most of the congregations of this diocese. Did you know that the majority of our congregations did not meet the canonical deadline of March 1st for submitting their reports? In fact, as of today, we still have 2000 and 2001 reports that have not been received.

Listen to these statistics. In 2001, average Sunday attendance decreased by 1.3 percent from the prior year. The number of active members decreased by more than 2.5 percent. Child bap-

tisms decreased by 14.4 percent. Adult baptisms decreased by 27.6 percent. Confirmations and receptions decreased by 50.6 percent! In 18 of our 40 congregations (45 percent), the number of active members decreased.

Let me share something about the Cathedral Church of St. Andrew. In the 96813 zip code area surrounding this Cathedral, 49 percent of the people, or 11,904 persons, say that they have no faith affiliation! In 2001 active membership of the Cathedral increased by 7 persons, an increase of less than one half of one percent!

What do these statistics provided by congregations tell us about mission? What does this say about our proclamation of the Gospel as missionaries? What does this say about evangelism? What does this say about Christian formation? What does this say about our vision? Is this God's call? Have we decided to die?

At the 2000 General Convention in Denver, the Episcopal Church adopted the "20/20" program with a goal of doubling the size of the Episcopal Church by the year 2020. We have moved in the opposite direction. Since 2000 we have annually decreased in size. Given the number of active members at the end of 2001, we would need to incorporate 1,198 new members annually, in order to double the size of our diocese by 2020. Rather than the 10,787 active members of 2001, we would have 21,574!

A challenge

Let me challenge this Diocese to make a decision for evangelism. A decision for this 34th Annual Meeting of the Convention of the Diocese of Hawai'i is to adopt a goal of increasing active membership (note I said "active") by 10 percent or 1078 members in 2003. The Evangelism Commission, chaired by Cass Bailey, Rector of St. Christopher's, has been preparing an evangelism strategy for our Diocese. Presentations of their program will be made to the clergy and leaders of our diocese during the next two months. A ten-member team of clergy and laypersons are attending the "Clear Vision" conference in the Diocese of Texas to learn about church growth, congregational development and evangelism next month. They will return to diocese as resource persons.

These are just two examples of intentional efforts undertaken to transform us from "caretakers" to "missionaries" of the Gospel of Jesus Christ. The Great Commission calls us out into the world to teach and baptize. The harvest is truly plentiful. Let us decide here and now to reach the unchurched of our islands with the love and joy of Jesus Christ. Let us decide right here and now to transform all our congregations into missionary outposts where lives are transformed by faith in Christ. We must decide.

The second decision I place before this Annual Meeting will challenge us to put our money where our mouth is. I

ask for the establishment of a Mission Fund that for the next ten years will annually raise money for mission projects inside and outside of the Diocese. Many dioceses have implemented this program developed by the Diocese of Alabama after it was endorsed by the 2000 General Convention. It has become known as the Alleluia Fund since the funds are raised during the fifty days of Easter. All moneys are for mission purposes and not part of the operating budget of the Diocese. This is not a capital funds campaign.

This is how it works. Each active member of the diocese is asked to make a daily offering during the fifty days between Easter Sunday and Pentecost Sunday. If we do have the 10,787 active members that we claim, and if each gave \$1.00 per day for the fifty days of Easter between April 20 and June 8, 2003, we would have over a half million dollars for mission projects in the Diocese of Hawai'i on June 9, 2003!

Even if we asked only the 8,215 communicants in good standing of the Diocese to give \$1 per day, we would have a mission fund of \$410,750!

You must decide

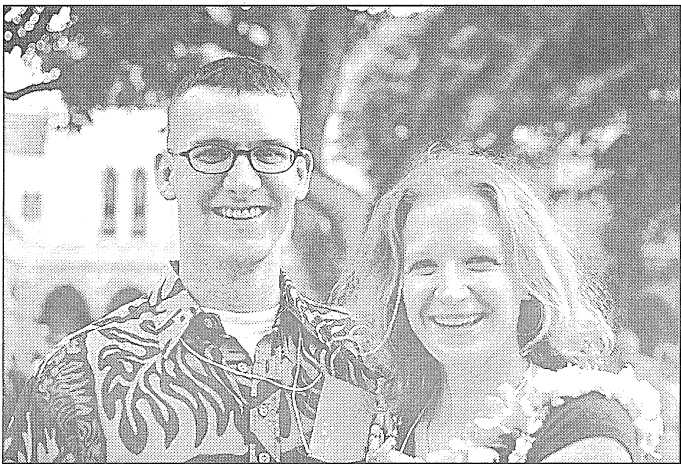
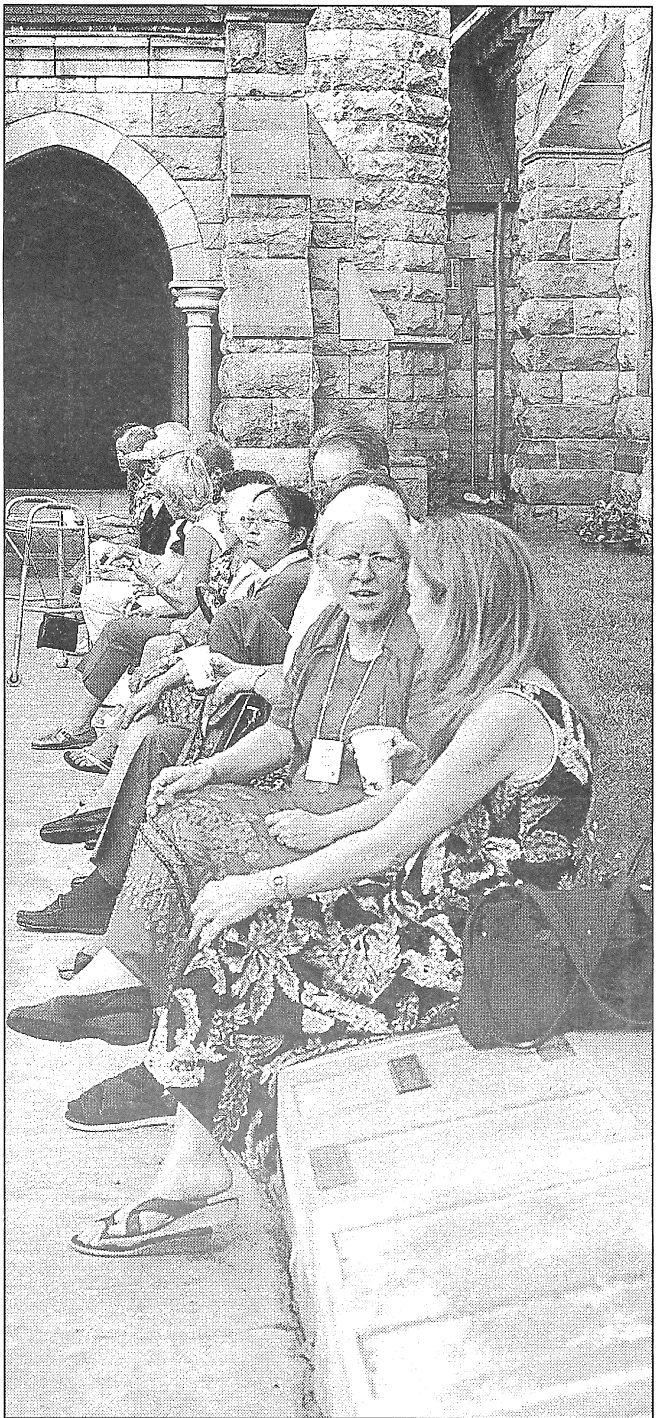
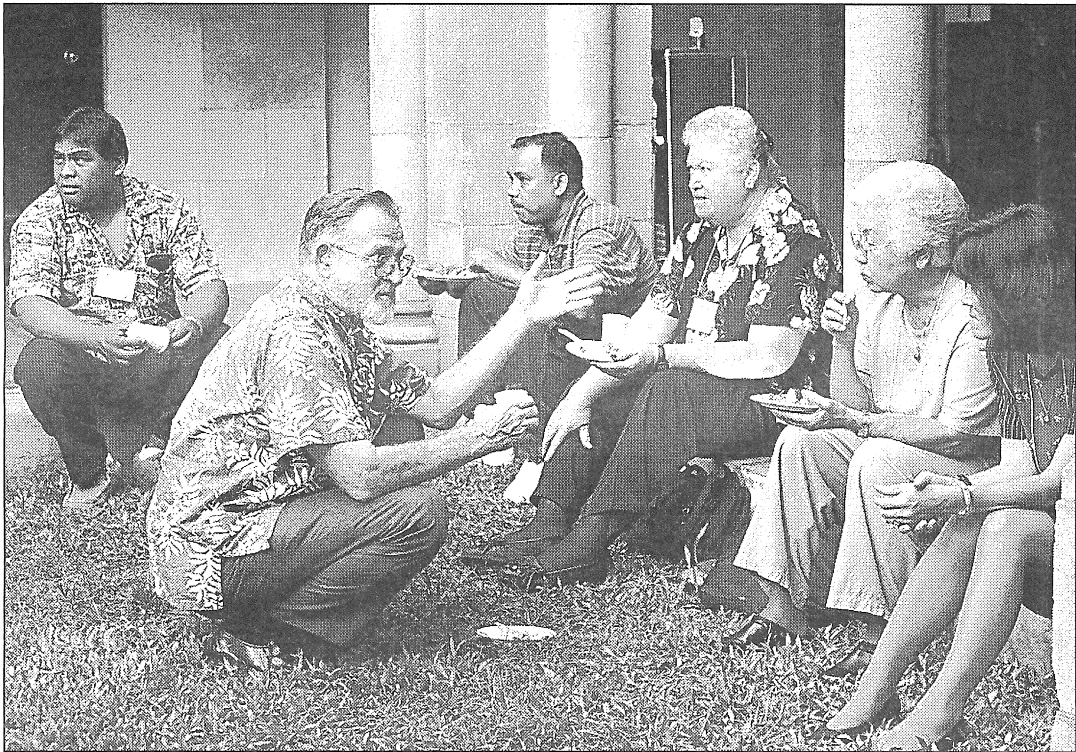
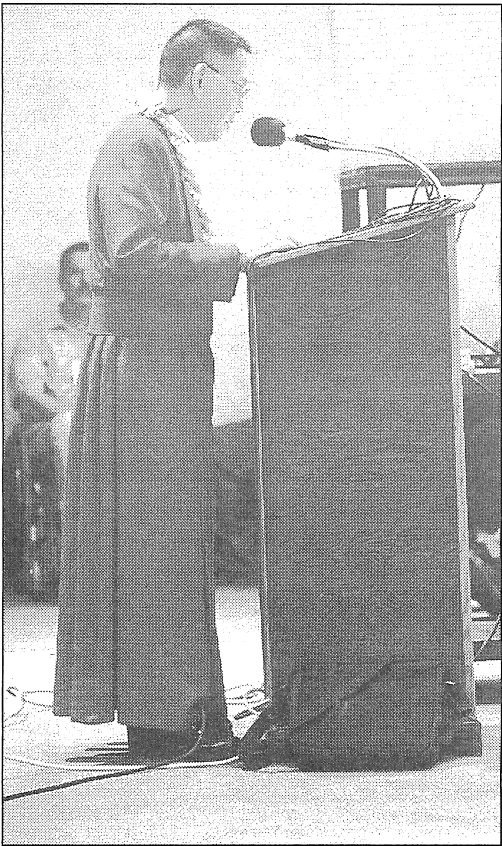
I am sure that you can identify many mission projects and ministries that the Diocese of Hawai'i could begin in 2003 to proclaim the Good News of Jesus Christ: a new church start in Kona on the Big Island; a Spanish language ministry among the growing Hispanic population in the State of Hawai'i; outreach ministries that serve the human needs of our communities, such as at St. Jude's on the Big Island. Programs of evangelism to the unchurched of our communities — partnerships with Anglican dioceses around the world as they address issues of poverty and disease — but it demands a decision to become a community of vision. We must decide to make the Mission Fund a tangible witness that we are willing to reach our communities for Christ.

The important thing will be that we must work together with a common resolve and vision if we are to increase our active membership by 1,078 persons in 2003, and if we are to raise \$400,000 for mission work. While in Cleveland, Ohio, I saw a city bus stuck in rush hour traffic with a sign promoting mass transit that read, "We're different but at least, we're doing it together!"

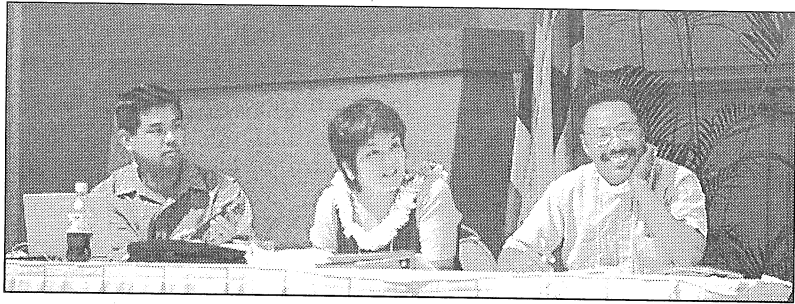
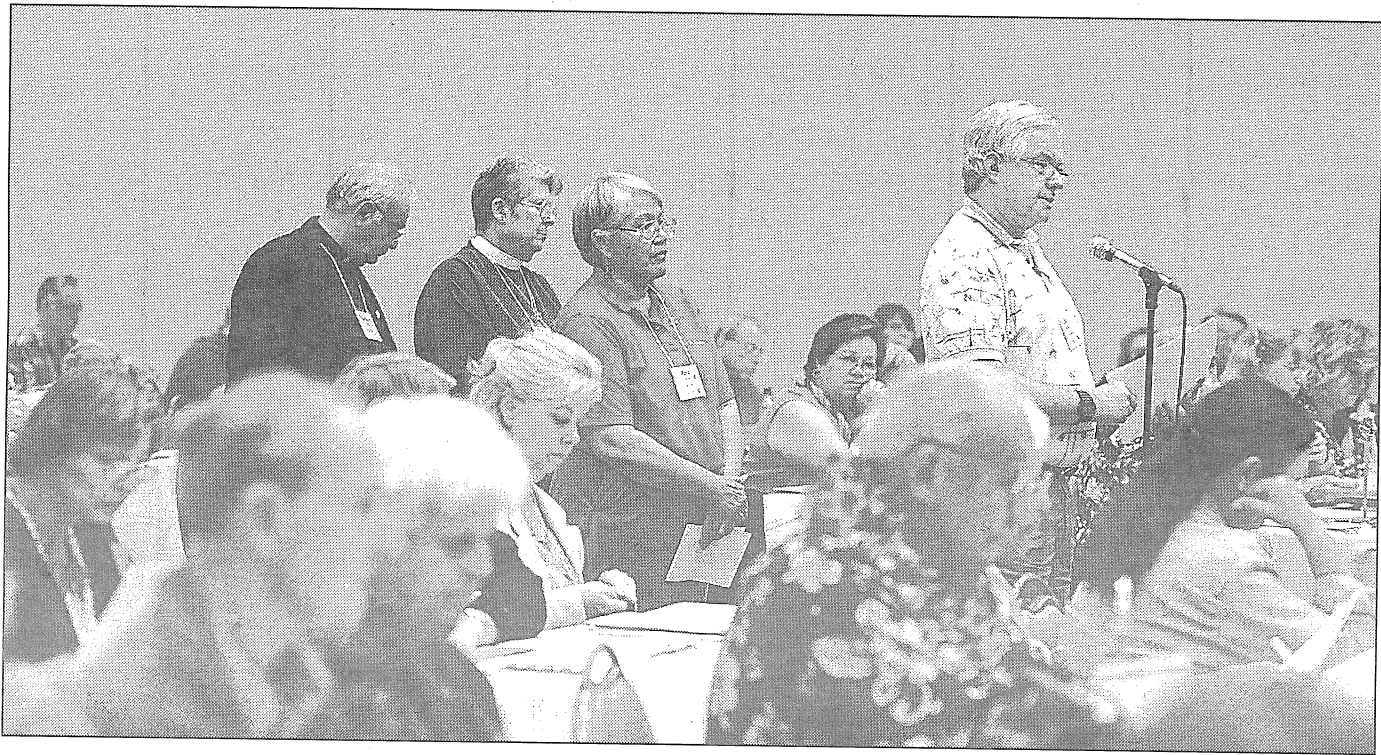
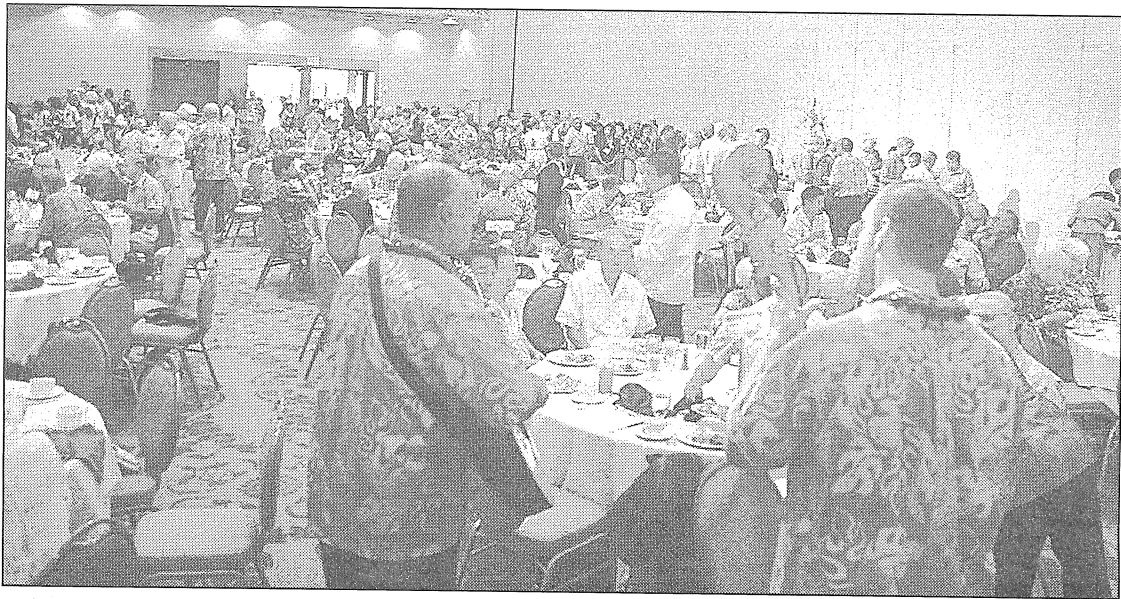
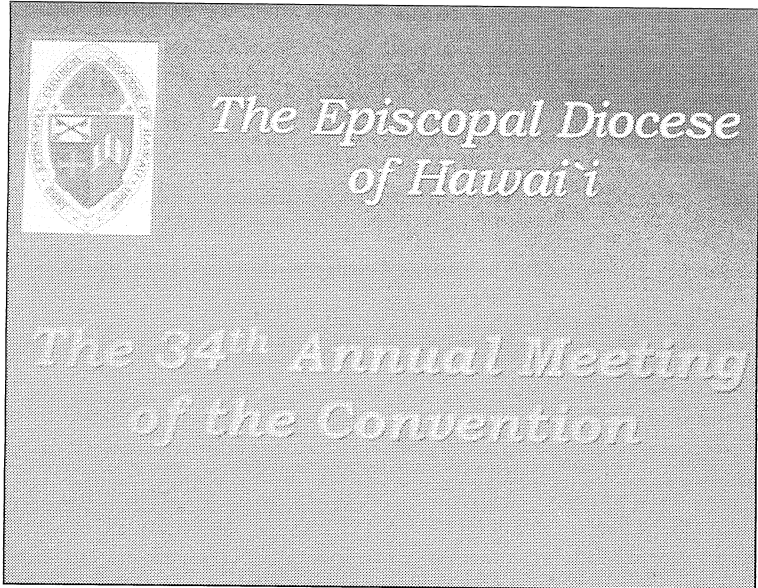
Becoming a community of vision is no easy task. It involves a deliberate decision on the part of each one of us, a decision that must be accompanied by repentance, the willingness to seek God's point of view in place of our own. We must decide.

Unlike that five-year boy at Lego Land, we are striving for more than a wad of gum. We strive to restore all people to unity with God and each other in Christ. We begin with the question, "Do I believe that Jesus Christ is my Lord and Savior?" We must decide. You must decide.

AT THE CONVENTION (SCENES FROM THE WEEKEND)



AT THE CONVENTION (SCENES FROM THE WEEKEND)



AT THE CONVENTION (BISHOP CHANG'S SERMON AT FRIDAY'S EUCHARIST)

As I encounter people for the first time since returning from sabbatical on September 10th, I am asked, "How was your sabbatical?" It will probably take months for Dee and me to share the wonderful experiences of our time apart. I must say that it was the best sabbatical of the four that I have taken in 37 years of ordained ministry. To the staff of the Office of the Bishop, the Standing Committee and the Diocesan Council, Dee and I say, "Thank you for making it all happen for us."

Today you are going to hear about my sabbatical. Some of you have heard this story from my sabbatical. For that I apologize.

In early August Dee and I accompanied our grandchildren to Lego Land in Southern California. Lego Land is an amusement park for children under 13 years of age. Like Disneyland, Six Flags Great America, and other mega amusement parks, there are rides. As is the case for most of the rides, there are long lines. Waiting patiently is part of the amusement park experience. At one of the rides, my grandson and son-in-law were in a line that anticipated a 45-minute wait from the time you entered the serpentine that led to the place where you boarded the ride. In line in front of them was a youngster who was about five years old. While in line this youngster saw a piece of gum on the other side of the wrought iron fence. He tried with his left hand to reach the wad of gum but his arm was too short. Turning around he stuck his right arm through the fence hoping that he could reach the gum. Once again his arm was too short. Meanwhile, the line was moving forward to the boarding gate for the ride. He was totally oblivious to the fact that the line and his parents had moved forward. He then poked his left foot through the fence and tried reaching the gum with the heel of his shoe. But he was unsuccessful again. In total desperation, he forced his right leg through the fence. Using the toe of his shoe, he was able to fix the wad of gum on his shoe. Drawing this leg back through the fence, he proudly reached down, took the gum off the toe of his shoe, and stuck it in his mouth before rushing forward to rejoin his family in line.

When I have told this story, the reactions of my listeners have been most interesting. When I shared the



A group from St. Andrew's Priory offers an anthem during the Eucharist service Friday afternoon prior to the start of the Diocesan Convention.

story with the Priory student body, you could hear the "ughs and yucks" throughout the whole Cathedral. What a disgusting thing for that little kid to do! Putting that previously chewed wad of gum into his mouth was extremely unhealthy and dirty.

Another common reaction was a real sense of judgment upon the parents of the youngster. How could these parents allow this boy to get the gum and put it into his mouth? How irresponsible were these parents? Why weren't they paying attention to what he was doing? They were judged as "irresponsible" parents by the standards and values of the other families standing in the line for the boat ride.

There is also a sense of embarrassment, shame, and pity for the boy and his family. Desperate for gum, the youngster behaved without regard to what the people around him thought or said. Was this family so poor that they could not afford to buy gum for their son? And yet, they probably paid nearly \$100 for their family's admission to Lego Land. Could something have been done to help the situation? Should someone have stopped the boy from placing that wad of gum into his mouth?

I would have us look at another facet of this story — the unbelievable commitment of that youngster to getting that wad of gum. He wanted that wad of gum so badly. He wanted it badly enough that everything around him became secondary. He was so focused on that gum that even the boat ride and his parents became secondary.

Because of his commitment to getting that gum, he gave up his place in line. He let other people get in front of him. He was not the least embarrassed to "demonstrate" his commitment to get that wad of gum. That gum was important, and so he made every effort to get it.

The level of his commitment was so high that he used everything he could control — his shoes and body — to get that gum. And nothing was going to prevent him. He became totally oblivious to the changing world around him as he focused on that wad of gum.

"This is my commandment, that you love one another as I have loved you. No one has greater love than this, to lay down one's life for one's friends. You are my friends if you do what I command you; I am giving you these commands so that you may love one another."

What is our commitment to obey the Great Commandment? What is our personal commitment to Jesus the Christ? Are we willing to lay down our life as Jesus gave his life for our salvation? The readings for today direct our focus on commitment to Jesus and to living the Great Commandment.

That youngster at Lego Land demonstrated a depth of commitment that we would do well to imitate in our relationship to Jesus Christ. We must be totally focused on Jesus. The boy's desire for that wad of gum overwhelmed his desire for anything else. His desire led to action. Getting that wad of gum was the priority of his life at that moment. In our own lives we must make Christ our unending priority above all else. We offer ourselves to be transformed by the love, grace and mercy of God. I am beginning to perceive this kind of commitment among the young people who talk to me about a vocation of ordained ministry. As yet they don't have a totally clear picture of their future vocation, but they can express a commitment to Jesus Christ as Lord and Savior.

Commitment demands self-denial and sacrifice. The youngster willing gave up his place in line, in order to continue his quest for that wad of gum. Our spiritual quest to know

and follow Jesus will require self-denial and sacrifice at some point on our spiritual journey. Servanthood ministry is characterized by total commitment and service to the other. There are more than financial costs for Christian discipleship. Living the Gospel imperatives can mean hard inconvenient work when we are seeking life in the comfort zone. Servant ministry is made incarnate in our churches when members care for each other. Sacrificial service was expressed in the caring ministry of a congregation to a family in a time of terminal illness or personal tragedy. It is exercised in the supportive ministry to a family during recovery from debilitating illness or substance abuse or physical abuse. These are wonderful stories of people being missionaries to each other being the presence of Christ to those in need.

Our commitment to Jesus demands that we not be embarrassed to publicly live our faith in Jesus Christ. Whether it is saying grace before your meal in a restaurant, or making a statement about peace as a member of the House of Bishops, our commitment, in the words of St. Paul, make us appear foolish in the eyes of the world. Commitment to Jesus means that we live not by the values of the world, but by the values of the Gospel of Jesus Christ. Words and deeds make incarnate our faith. We are not embarrassed.

Giving of self through time, talent and treasure comes from acceptance of the abundance of the Gospel proclaimed by Jesus. Jesus came not to limit life but to make it more abundant. The church volunteers at the Institute for Human Services, the generosity of the Rev. George MacCray, and the diaconal ministry of our vocational deacons stand before us as expressions of a living faith rooted in deep commitment to Jesus. It begins with real commitment.

"This is my commandment, that you love one another as I have loved you. No one has greater love than this, to lay down one's life for one's friends. You are my friends if you do what I command you; I am giving you these commands so that you may love one another."

Deep commitment to the Risen Christ makes living the Great Commandment a reality for us. Your presence here today is our beginning of that commitment.

AT THE CONVENTION (ECW CONVENTION)

ECW elects new officers, honors Martha Ho

By Annette Jim and Elizabeth House

More than 100 women attended the annual meeting of the Episcopal Church Women of Hawaii on October 25, 2002.

The Rt. Rev. Richard S.O. Chang, Bishop of Hawai'i, his wife, Dee, members of the diocesan staff and new clergy to the diocese were given lovely lei donated by Eva Kum of St. Philip's Church.

The 2002-2003 ECW Outreach (also known as SPECIALS) were presented. They are 1. The Bishop's Discretionary Fund; 2. St. Jude's Episcopal Church for a ministry to provide educational supplies and snacks in an afterschool program to Marshall Islanders; 3. Calvary Episcopal Church for outreach through a mission to build a house in Mexico for a needy family; 4. Good Shepherd Church for a ministry of feeding the hungry every Sunday. Pledges from participants amounted to over \$13,000.

Members of the diocese are invited to contribute to the ECW Outreach for Mission Projects. Checks may be written to ECW of Hawaii and mailed to the ECW treasurer, 229 Queen Emma Square, Honolulu, Hawaii 96813.

Martha Ho, who has been a representative of the Church Periodical Club for the past 30 years, was thanked for her service and presented with a lei. Eva Kum was also recognized and thanked for donating so many lei for the convention.

Outgoing president, Janet Goff, thanked her officers with gifts of teacups, symbolic of the teas that have been held by the ECW as fundraisers for a Triennial Fund.

The election of new officers for 2002-2005 was held and the newly elected were sworn in by the Rt. Rev. Richard S.O. Chang. The newly elected officers are: President: Joyce B. Kim; First Vice President: Karen Huston; Second Vice President: Gina Perkins; Treasurer: Marilyn Kunitake; Recording Secretary: Louise Aloy; Corresponding Secretary: Elsie Ching; Christian Social Relations Chair: Annette Jim; UTO Chair: Louise Aloy; Church Periodical Club Chair: Sylvia Rowland; Altar Guild: Rosella Newell; Neighbor



PHOTOGRAPHS BY ANNETTE JIM

Newly elected ECW president Joyce Kim, right, presents Martha Ho with a lei for her 30 years of service with the Church Periodical Club, as outgoing ECW president Janet Goff watches.

Island Vice Presidents: Jean Fiddes (Maui), Carole Knudsen (Kaua'i), Mary Dereig (Big Island).

After the meeting, all adjourned to a delicious lunch in Davies Hall.

At 1 p.m., representatives of the United Thank Offering marched in an Ingathering procession in the opening service for Convention held at St. Andrew's Cathedral.

Newly elected president Joyce Kim said she was honored to have been elected to the position. She said during her three-year term that she would like to emphasize three main issues: actively recruiting the younger generation to join the ECW; have more educational programs focusing on spiritual life; and unite all women in the Diocese.

She invited everyone to attend the ECW monthly meetings, which are usually held the second Saturday of each month.



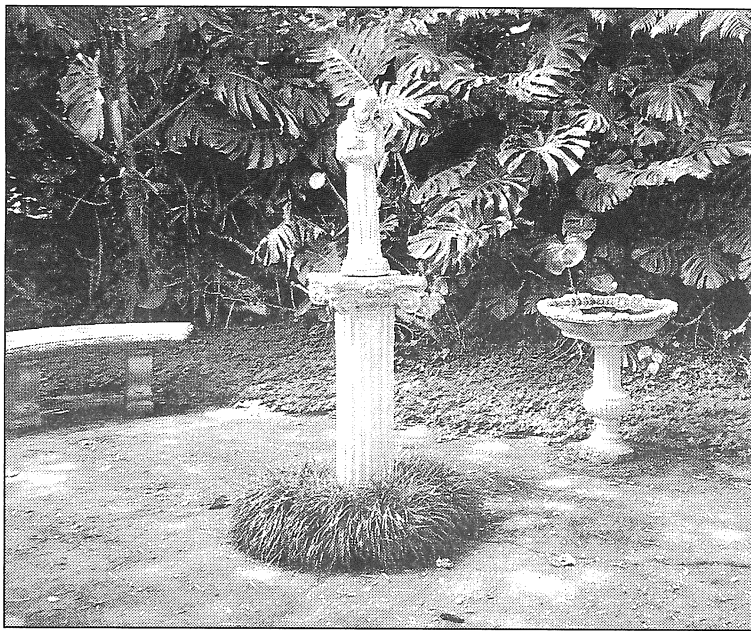
Newly elected ECW president Joyce Kim of St. Luke's in Honolulu, right, stands with outgoing ECW president Janet Goff of St. Timothy's in Honolulu, center, and recording secretary Louise Aloy of Good Shepherd on Maui, left.

Turning vandalism into evangelism

By The Rev. Alison M. Dingley

Sadao Honda, Treasurer of St. Stephen's in Wahiawa, was shocked when he came to the church early on Friday morning, August 23rd. The prayer garden in the back of the church had been vandalized. The statue of St. Francis had been knocked down and broken in three pieces. The bathroom adjacent to the garden had been broken into and there was graffiti on the walls. The lights along the lanai had been broken.

Sadao called the police and Jerri Barrett, the Junior Warden. The police investigated and found a piece of paper with a name on it. No one expected much of the police investigation, and St. Stephen's had more urgent



The statue of St. Francis in the prayer garden behind St. Stephen's Church in Wahiawa.

concerns than finding the culprits. The parish was scheduled to host the national United Thank Offering Board the next evening for Eucharist and dinner. Jerri's husband, Michael Lurvey, and son got to work, repaired the

damage, replaced the lights and even put St. Francis back together — all in time for the UTO Eucharist.

A few weeks later, Sadao got a call from the police detective. They had identified the vandals through the name on the

paper. The culprits were two high school seniors who admitted to causing the damage. The police gave St. Stephen's the option of prosecuting the young men or seeking restitution. Sadao and Jerri consulted with the Interim Rector, Alison Dingley, and they decided to seek restitution. They negotiated with the youth and their parents an agreement whereby they would work off the cost of the damage by working for the parish at minimum wage.

The youth spent their October school break working under Michael's supervision on renovation projects around the church. By the third day or so, they started to enjoy the work as they saw the results of their labor. Michael taught them about construction and plumbing. They learned to

take toilets apart and put them back together. They also learned how much money can be made in the construction trades.

They have worked off their debt and are still working with Michael on renovations to the rectory as volunteers. Of more importance, though, they are beginning to see positive futures for themselves. More important still, they have experienced the forgiveness Christ makes possible. One of them is even thinking about becoming involved in Church.

The members of St. Stephen's are grateful for the opportunity to share the good news of Christ with these young men, turning them from paths that were leading to the criminal justice system, offering them paths of service and productivity.



Make a difference in the world during Lent

By The Rev. Jodene Hawkins

In a golden burst of light, the sun rises over the Mount of Olives in Jerusalem. A church bell rings in the midst of the minaret's calls to prayer and the singing of prayers at the Wailing Wall. The tolling bell is the Christian's daily call to prayer at the Episcopal Cathedral of St. George's. A small remnant of Christians gathers for prayer and Holy Eucharist in the historic stone chapel. Who are these Christians in a Holy Land torn by violence? What is their life like? What is their mission and ministry?

The faces of these Christians may surprise us. Yes, they are Christians on pilgrimage from around the world. Yes, they are international Christian missionaries and relief workers. However, the sometimes little known reality is that our permanent resident sister and brother Episcopal Christians in the Holy Land are Palestinians. Yes, the Christians of the Holy Land are Palestinian. These Christian Palestinians have lived in the Holy Land for generations and



NANCY DINSMORE

Children must go through security checkpoints in order to go to the Episcopal school in Ramallah.

generations and most have been Christians all of their lives. They were born to Episcopal Christian parents. They are grandchildren and great grandchildren of Episcopal Christians. As Episcopal Christians our Palestinian brothers and sisters have been baptized, confirmed and married in Episcopal Churches like St. Andrew's in Ramallah, St. Margaret's in Nazareth, and St. George's Cathedral in Jerusalem.

Everyday life in the Holy Land is difficult and dangerous for our brothers and sisters. Checkpoints and soldiers with Uzi rifles, curfews and bulldozed streets hinder

workers from their jobs, students from their schools and worshippers from their churches. Hope flickers in these dark times. And yet the Episcopal Churches in the Holy Land pool their extremely scarce resources to preach Christ's gospel of love and reconciliation and put hope into action as they have for many years. It is a daily struggle, but the doors to the Episcopal schools, the hospitals in Gaza and Nablus, and the orphanage in Ramallah remain open thanks to their mission and ministry and assistance from The U.S. Episcopal Relief and Development Fund.

In Ramallah the doors to the Episcopal orphanage and school are still open. The hearts of the housemothers are still full of love, yet color crayons, pencils, vitamins and band aids, baseball mitts and dolls to hug are in short supply. The Episcopal school helps subsidize the orphan's education even while every resource is stretched beyond limits.

If you or your church want to join the Episcopal churches on Maui in making a difference for these children at the Episcopal Orphanage and School in



Ramallah during Lent through the U.S. Episcopal Relief and Development Fund you may order free mite boxes from <http://www.Episcopalparishservices.org>. For answers to questions please contact The Rev. Heather Mueller-Fitch at St. John's in Kula, Maui janetm@aloha.net or the Rev. Jodene Hawkins at Seabury Hall, Maui at revjodene@aol.com.

From the School and Orphanage newsletter, "in our daily messages of faith we help the students understand how to use faith to do what is good for people who are suffering from this political situation. We emphasize that violence is never a solution, and that spiritual strength and education lead to peaceful solutions."

May we too, use our faith to do what is good for our fellow Christians who are suffering from this political situation.

Jodene Hawkins is Chaplain at Seabury Hall on Maui.

St. Nicholas Day

On December 6, from 6 to 8 p.m., Saint Nicholas Episcopal Church invites you to celebrate our name-saint, the real Saint Nicholas! Join us at the grand opening of The Marketplace at Kapolei next to Safeway.

The Right Rev. Richard S.O. Chang, Bishop of Hawai'i, will appear as St. Nicholas and give out chocolate coins. There will be free food, music and entertainment.

We'll also be collecting donations to the United States Marine Corps Toys For Tots program. Please bring a new toy (unwrapped) and help the Marines and children.

Introduction to Prayer

St. Clement's will host "Introduction to Prayer 102" on Wednesday, Dec. 11 at 7 p.m. at the Church. All are invited. Topics to be covered will include musical prayer, Anglican prayer beads and contemplative prayer. The program is expected to last about an hour.

Men's conference set

There is still time to register for the third annual Episcopal Men's Conference, set for Jan. 17-19.

The Rt. Rev. Charles F. Duvall, former bishop of the Diocese of Central Gulf Coast, will be the featured speaker at the event, to be held at Camp Mokule'ia.

Camp Mokule'ia will offer two levels of service: two nights lodging in the Lodge (\$100) or Cabins (\$60) with five meals, and Saturday only participation with two meals (\$20).

In addition to our group team building activity, the camp will also offer a variety of recreational possibilities from snorkeling, kayaking, hiking, swimming, fishing (if you bring the gear), to just sitting and enjoying the opportunity for personal introspection and relaxation.

For more information or for registration forms, call Bruce Fink at 477-0420 (work) or 941-1722 (home). You may also email Bruce at brucefink@hawaii.rr.com.

UTO grant applications

United Thank Offering grant applications for 2003 are now available from the Bishop's office. UTO monies will be granted in support of programs within the Anglican provinces that: 1) Implement actions within the requesting dioceses or province to

either address compelling human needs and or to expand mission and ministry; 2) Are expended during the twelve months following the award; 3) Are new work, a new phase of work or an expansion of existing work; 4) Give special attention to disadvantaged persons, places and organizations; 5) Are part of a provincial or diocesan mission strategy; 6) In which the United Thank Offering participation is clearly identifiable. To be considered by the Bishop and the diocesan UTO committee, completed applications with all required attachments must be postmarked Dec. 20, 2002 or earlier, hand delivered to a member of the Bishop's staff at the Bishop's office on Dec. 20, 2002 or earlier, or faxed to the Bishop's office on Dec. 20, or earlier.

Calvary fundraiser

Calvary Preschool's annual Koala Moa chicken sale is set for Dec. 7 in the church parking lot, beginning at 9:30 a.m. Call the preschool, 235-4833 to buy tickets, or stop by Saturday after the Kaneohe Christmas Parade. Some chickens will be available without a pre-sale ticket.

Cathedral Evensong

On Jan. 5, 2003, the Cathedral of St. Andrew will feature guest organist James Warren from San Francisco for its monthly Evensong service.

The service begins at 7:30 p.m., and will include sung chants, including The Magnificat and the Nunc Dimitis.

St. Luke's in calendar

St. Luke's, Honolulu is one of the featured churches in the 2003 Historic Episcopal Churches Engagement Calendar, available now through mail order. The cost is \$14.95 per calendar, which includes shipping and handling. If ordering 10 or more calendars, the price is \$10 each. Write to National Episcopal Historians and Archivists, 509 Yale Ave., Swarthmore, PA 19081. Telephone: (610) 544-1886. Payment must accompany order. Please make checks payable to NEHA.

Messiah Community Sing

On Dec. 11, the Cathedral of St. Andrew will sponsor its annual Messiah Community Sing at 7:30 p.m.

The Cathedral provides the music, the place, the director, the organist and the soloists for the Messiah.

The "audience" is the choir, singing the choral numbers. Last year more than 150 participants came to this event. The community sing is free and open to the public. Listeners are also welcome!

Alpha Conference in Jan.

The Alpha Conference with Nicky Gumbel will be held at First Presbyterian Church in Honolulu on Jan. 3-4, 2003. There are 28 flight coupons available for Neighbor Island participants. Contact the Rev. Joe Carr at (808) 247-2733 or by email at jjcarr2@aol.com.

St. Mary's Centennial

St. Mary's in Honolulu will celebrate its Centennial with a three-day affair beginning Dec. 6.

The Rev. Dr. Douglas McGlynn, a former rector, will speak on Dec. 6 at 7 p.m., with refreshments to follow. On Saturday, there is an invitation-only lunch. The big celebration will occur on Sunday morning, when the Rev. Rudolph Duncan, the first rector of St. Mary's, will be the guest preacher at a Festal Eucharist.

Come join the people of St. Mary's as they celebrate the 100th anniversary of the church!

For more information, call the church office at 949-4655.

Diocesan office closed

The Diocesan office will be closed for Christmas and New Year's on the following dates:

Christmas: Office closed Wednesday, Thursday and Friday, December 25-27.

New Year's: Office closed Wednesday, Thursday and Friday, January 1-3.

Contemplative retreat

The Spiritual Life Center and Contemplative Outreach of Hawaii invite you to enter "The Cloud of Unknowing."

This contemplative Advent Retreat is scheduled for Dec. 12-15 at St. Anthony's Retreat Center in Honolulu. Special guest is Fr. William Meninger, author of "The Loving Service for God: Contemplative Prayer" and "The Cloud of Unknowing."

"The Cloud of Unknowing" is a remarkable treatise that gives a solid

background to prayer, and is in particular the source of the method used in Centering Prayer.

This retreat is for those who have an interest in contemplative prayer and the Christian contemplative tradition.

For those practicing Centering Prayer, it will provide an additional dimension and depth to their understanding and practice of Centering Prayer.

There are four price levels for this retreat, depending on where you stay during the retreat. St. Anthony's recently opened a new building for lodging.

Cost for the retreat in a single room in the new building is \$280; double occupancy in the new building is \$250. Cost for a single room in the old building is \$235. For those who wish to commute to the retreat, the cost is \$150.

For those staying at the retreat center, the retreat begins at 5 p.m. on Thursday and ends at 1 p.m. on Sunday. That price includes lodging and meals.

For commuters, the retreat will be held from 7 to 9 p.m. on Thursday and Friday and from 9 a.m. to 5 p.m. on Saturday. That price includes Saturday lunch.

For more information, including information about possible scholarship help, call The Spiritual Life Center at 523-1170 or The Contemplative Outreach Center of Hawaii at 536-6090.

More chicken!

Holy Nativity is currently conducting a Huli Huli Chicken fundraiser. Tickets are on sale now for \$4 per half chicken, with a purchase deadline of Dec. 11.

You can pick up your chicken on Dec. 14 at the church parking lot. Last year, Holy Nativity raised \$9,000 by selling 2,938 chickens. This year, the church has a goal of selling 4,000 chickens!

For more information, or to purchase a ticket, contact Betty at Holy Nativity, 373-2131.

Play at St. Clement's

The Players of St. Clement's will be performing "Amahl and the Night Visitors" at St. Clement's Church on Sunday, Dec. 15 at 7:30 p.m.

The performance, which will be directed by Eunice DeMello, is free. There will be a calabash bowl for donations.

BISHOP'S VISITATION SCHEDULE

DECEMBER

Dec. 1.....Holy Nativity
Dec. 8.....St. Mary's
Dec. 15.....Calvary
Dec. 22.....St. George's
Dec. 24.....St. Andrew's

JANUARY, 2003

Jan 05.....Good Samaritan
Jan 12.....St. Stephen's
Jan 19.....St. Mark's
Jan 25.....St. Columba's
Jan 26.....Holy Apostles/
Resurrection

FEBRUARY

Feb 02.....St. John's By-The-Sea
Feb 09.....Free Sunday
Feb 16.....Free Sunday
Feb 23.....St. Nicholas'

MARCH

Mar 02.....Good Shepherd
Mar 09.....St. Christopher's
Mar 16.....House of Bishops
Mar 23.....Epiphany
Mar 30.....St. Luke's

APRIL

Apr 06.....St. Jude's
Apr 13.....St. Peter's
Apr 20.....St. Andrew's Cathedral
Apr 27.....Free Sunday

MAY

May 4.....Big Island Cursillo
May 11.....St. Paul's
May 18.....St. Elizabeth's
May 25.....Free Sunday

JUNE

Jun 01.....St. Mary's
Jun 08.....St. Andrew's Cathedral
Jun 15.....St. Timothy's
Jun 22.....St. Philip's
Jun 29.....St. Michael's

JULY

Jul 06.....Vacation
Jul 13.....Trinity By-The-Sea
Jul 20.....Free Sunday
Jul 27.....General Convention

AUGUST

Aug 03.....General Convention
Aug 10.....Vacation
Aug 17.....Free Sunday
Aug 24.....St. James'
Aug 31.....St. John's

SEPTEMBER

Sep 07.....Holy Apostles'
Centennial
Sep 14.....West Kauai
Sep 21.....St. Andrew's Cathedral
Sep 28.....Christ Memorial

OCTOBER

Oct 05.....St. Thomas'
Oct 12.....St. Augustine's
Oct 19.....St. Clement's
Oct 26.....Vacation

NOVEMBER

Nov 02.....Waikiki Chapel
Nov 09.....Holy Innocents'
Nov 16.....Free Sunday
Nov 23.....Grace
Nov 30.....Holy Cross

NOTE: Schedule subject to change.

COMING SOON (EVENTS AROUND THE DIOCESE)

DECEMBER

5 Thursday
► O'ahu Clericus. 9 a.m.
► Support Department. 12:30 p.m., library, St. Andrew's Cathedral.
► Priory Board. 4:30 p.m.

6 Friday
► Maui Clericus. 9:30 a.m.
► St. Nicholas Day. 6-8 p.m., The Marketplace at Kapolei.

6 Friday-8 Sunday
► St. Mary's Centennial Celebration.

8 Sunday
► ECW Christmas Tea. 1-4 p.m.

8 Sunday-10 Tuesday
► Clergy and Spouse Advent Retreat. Camp Mokule'ia.

10 Tuesday
► Commission on Christian Formation. 4 p.m., Von Holt Room, St. Andrew's Cathedral.

12 Thursday
► Commission on Ministry. 3 p.m., Room 8, St. Andrew's Cathedral.
► Commission on Campus Ministry. 4:30 p.m., George W. MacCray Center.

13 Friday-15 Sunday
► Senior High Retreat. Camp Mokule'ia.

13 Friday
► Standing Committee. 9:30 a.m., library, St. Andrew's Cathedral.

14 Saturday
► Commission on Diversity. 7:45 a.m., Room 17, St. Andrew's Cathedral.
► Deacons' Meeting. 9 a.m., St. Andrew's Cathedral.
► ECW. 9 a.m.
► Hawai'i Program for Spiritual Direction. 9 a.m., conference room, St. Francis Hospital.
► Commission on Evangelism. 10 a.m.

17 Tuesday
► Hawai'i Clericus. 9:30 a.m.

19 Thursday
► Commission on Multicultural Ministry. 3 p.m.
► Cathedral Chapter. 4:30 p.m., St. Andrew's Cathedral

20 Friday
► Commission on Continuing Education. 2:30 p.m., Room 17, St. Andrew's Cathedral.

21 Saturday
► Diocesan Council Department Meetings. 9 a.m., St. Andrew's Cathedral.
► Diocesan Council. Noon, St. Andrew's Cathedral.

25 Wednesday-27 Friday
► Diocesan Office closed. (Merry Christmas!)

27 Friday
► Kaua'i Clericus. 9 a.m.

28-Saturday-1 January 2003

► National Gathering of Students. New Mexico

JANUARY

1 Wednesday-3 Friday
► Diocesan Office Closed. (Happy New Year!)

3 Friday
► Maui Clericus.

3 Friday-4 Saturday
► 2003 Alpha Conference. First Presbyterian Church.

6 Monday
► Chronicle Deadline for February issue.

9 Thursday
► Support Department Meeting. 11:30 a.m., library, St. Andrew's Cathedral.

► Commission on Ministry. 3 p.m., Room 8, St. Andrew's Cathedral.
► Commission on Campus Ministry. 4:30 p.m., George W. MacCray Center.

10 Friday
► Standing Committee. 9:30 a.m., library, St. Andrew's Cathedral.

10 Friday-12 Sunday
► Junior High Retreat. Camp Mokule'ia.

11 Saturday
► Commission on Diversity. 7:45 a.m., Room 17, St. Andrew's Cathedral.
► ECW Auction, 9:30 a.m.-12:30 p.m., Von Holt Room, St. Andrew's Cathedral.

► Hawai'i Program for Spiritual Direction. 9 a.m., conference room, St. Francis Hospital.
► Commission on Evangelism. 10 a.m.

14 Tuesday
► Commission on Christian Formation. 4 p.m., Von Holt Room, St. Andrew's Cathedral.

14 Tuesday-17 Friday
► Province VIII Bishop's Meeting.

15 Wednesday
► O'ahu Clericus. 9 a.m.

17 Friday
► Commission on Continuing Education. 2:30 p.m., Room 17, St. Andrew's Cathedral.

18 Saturday
► Diocesan Council Department Meetings. 9 a.m., St. Andrew's Cathedral.
► Diocesan Council. Noon, St. Andrew's Cathedral.

20 Monday
► Diocesan Office closed. Martin Luther King Day.

21 Tuesday
► Hawai'i Clericus. 9:30 a.m.

24 Friday
► Kaua'i Clericus. 9 a.m.

30 Thursday
► Commission on Stewardship. noon.

FEBRUARY

6 Thursday
► Support Department Meeting. 11:30 a.m., library, St. Andrew's Cathedral.

7 Friday
► Maui Clericus. 9:30 a.m.

8 Saturday
► Commission on Diversity. 7:45 a.m., Room 17, St. Andrew's Cathedral.

► Adult Leadership Training. 9 a.m.
► ECW meeting. 9:30 a.m.-12 p.m., Holy Nativity.

► Hawai'i Program for Spiritual Direction. 9 a.m., conference room, St. Francis Hospital.

► Commission on Evangelism. 10 a.m.

11 Tuesday
► Commission on Christian Formation. 4 p.m., Von Holt Room, St. Andrew's Cathedral.

12 Wednesday-Sunday 16
► UTO Face-to-Face. Florida.

13 Thursday
► Commission on Ministry. 3 p.m., Room 8, St. Andrew's Cathedral.

► Commission on Campus Ministry. 4:30 p.m., George W. MacCray Center.

11 Thursday-Sunday 16
► 2003 National Children's Ministry.
► Provincial Youth Council.

14 Friday
► Standing Committee. 9:30 a.m., library, St. Andrew's Cathedral.
► Commission on Continuing Education. 2:30 p.m., Room 17, St. Andrew's Cathedral.

14 Friday-16 Sunday
► Happening #15. Camp Mokule'ia.

15 Saturday
► Diocesan Council Department Meetings. 9 a.m., St. Andrew's Cathedral.
► Diocesan Council. Noon, St. Andrew's Cathedral.

17 Monday
► Diocesan Office closed. President's Day.

18 Tuesday
► Hawai'i Clericus. 9:30 a.m.

19 Wednesday
► O'ahu Clericus. 9 a.m.

20 Thursday
► Commission on Multicultural Ministry. 3 p.m.
► Cathedral Chapter. 4:30 p.m., St. Andrew's Cathedral

22 Saturday
► Church Leaders' Workshop.

27 Thursday
► Commission on Stewardship.

28 Friday
► Kaua'i Clericus. 9 a.m.