

103807
HAWAII HISTORICAL SOCIETY
560 KAWAIAHO STREET
HONOLULU, HI 96813

HAWAIIAN CHURCH CHRONICLE

Specials ations due August 1

Are you aware of an organization or project that needs financial assistance during 1990-1991?

If you are, please contact Mary Lou Woodbridge, 6670 Hawaii Kai Drive #809, Honolulu 96825.

As chairman of the Christian Social Relations Committee, she receives and presents to the ECW Board all requests received.

Please submit your request on or before August 1, 1990.

At last year's ECW Annual Meeting, over \$10,000 were pledged to four Specials. The Bishop's Discretionary Fund is always first on the list.

Also funded last year were Project Respect, the Family Crisis Center of Kona, and the Bishop Tutu Scholarship Fund for South African students.

All requests should be submitted as follows:

- 1. Name of organization, with a brief description of its background and services.
- 2. Special purpose of the request.
- 3. Specific amount of financial assistance needed, and if other funding is available.

All requests are prayerfully considered by the board and presented at the Annual Meeting. This year, October 26th.

Delegates then pledge their contribution, and the ECW treasurer disperses moneys as they arrive from the various churches.

Each year the ECW also receives individual pledges earmarked for specific Specials.

--- By our ECW correspondent.

STILL A HOSTAGE



Terry Waite

Pray for all the hostages and for peace and justice.

Census of Hawaiian Episcopalians underway

In order insure that the work of the diocesan Commission on Native Hawaiian Ministry "is truly representative of, and responsive to, those Hawaiians who are Episcopalians," a census of all Hawaiian church members is underway.

Census forms are being distributed to Hawaiians and part-Hawaiians in all congregations and through this issue of the *Chronicle* (see page 8).

"One form per household will provide us with the necessary information," writes the Rev. Charles G.K. Hopkins, chair of this diocesan commission, in a letter to all congregations.

"If there are not enough forms, please duplicate more, or contact us and we will be happy to send them," he

adds. The commission's address is on the census form.

The commission asks that completed forms be returned by July 31, 1990, either mailed directly or via one's parish or mission.

As this is an ongoing effort, pastors have been requested to ask Hawaiians who become part of their congregations in the future to complete and return the form.

Members of the Commission on Native Hawaiian Ministry, in addition to Fr. Hopkins, are the Rev. Darrow Aiona, Yvonne Kaiahua, Pua Hopkins, Gard Kealoha, Pat Trask, Linda Sproat, R.N., Barbara Kalipi, and Michael Chun.

In other news of interest to Hawaiians, the Hawaiian Conference of the United Church of Christ has adopted a resolution recognizing "the inherent right of the native Hawaiian people to self-determined governance."

The resolution was introduced by the Rev. Kaleo Patterson and the Rev. Tuck Wah Lee at the UCC's recent Aha Pae'aina in Central Union Church, Honolulu.

There are 126 UCC congregations in Hawaii, 40 of them predominantly Hawaiian. Membership, as of 1987, was estimated at 18,500, Stu Glauber-man of the *Honolulu Advertiser's* capitol bureau reported.

The Episcopal Church in Hawaii has 40 congregations and a 1988 baptised membership of 11,206.

Easter Episcopal Misson started on Lanai

At the request of Lanai Episcopalians and after planning by diocese and Maui clergy, the Rev. Layton P. Zimmer, rector of Good Shepherd, together with his wife Patti and parishoners Lani Scott and Bob Durand, embarked on the small passenger ferry for the hour's ride from Lahaina to Lanai's Manele Bay, following Easter services in Wailuku.

Complete with hymn books, prayer books, vestments, flowers, and all the trappings for a festive service, the tiny Easter Episcopal Mission (as they now call themselves) became a reality around a picnic table, under the trees at Hulopo'e Bay.

The gentle tradewinds provided a soft continuo sound, and the nearby waves offered up a plainsong chant, while assorted picnickers, surfers, and volleyball players watched in wonder from the fringes.

The familiar resurrection hymns were sung and Holy Communion was celebrated by nine people in an idyllic setting that drew the comment from one, "I feel like an early Christian in Paradise!"

Helping in the planning of this noteworthy Easter celebration beyond the confines of church walls were the Rev. Peter Van Horne, diocesan execu-

tive officer, and the Rev. Walter Harris, rector of Holy Innocents', Lahaina, the contact person, and Lanai's Sherri and David Kwamme.

Fr. Zimmer expressed his hope that, with the support of the diocese and the Maui clergy, the Lanai Episcopal community would gather on a regular basis and move from what is termed "unorganized" to officially organized status.

The Maui clergy have committed themselves to celebrating the Holy Eucharist on Lanai twice a month, following a rotating schedule.

--- Bob Durand.



Lanai's Easter Mission celebrates the Resurrection, with Fr. Zimmer preaching (right).

Chronicle contribution envelope enclosed

Many thanks to all those who sent in a *Chronicle* contribution, even though the business reply envelopes were not there.

A glitch sidelined them, but they should be here this time around.

Your help in defraying *Chronicle* costs is much appreciated.

Contributions are donations to the Episcopal Church in Hawaii, and, as such, tax deductible.

The *Chronicle* goes to each Episcopal household on parish lists submitted by each church, and to friends of the Episcopal Church in Hawaii.

It will continue to do so, whether one is able to make a contribution or not.

Gratefully and with Aloha,
Hawaiian Church Chronicle

Back to Basics

"If we don't have a parking space for volunteers or visitors who come to the church during the week, we may lose them.

"They will probably cut back on their pledge or may cancel altogether."

This is a statement I heard at a recent church meeting.

In a similar vein, I listened to a discussion at a social gathering, where an individual allowed that he had stopped giving, because he was unhappy with the Episcopal Church's policy in South Africa.

As I thought about this sort of logic, it occurred to me that there is probably something about our church that annoys or disgruntles each of us.

The pews are rickety, the sign needs painting, the rector did not seem to care, the organist plays too slowly, the diocese spends too much money, the presiding bishop did this or did not do that -- the list could go on and on.

Each of us has a pet peeve or two, or three, about the church.

But is the church a place where we vote with our pocketbooks?

Should we hold back on our stewardship until the church gets it right?

If you feel that way, I suggest, as coach Dick Toomey used to say, "It's like mixing apples and oranges."

You are confusing Christian stewardship with temporal annoyances.

As Christians we are givers. Christian stewardship is the practical realization that everything we have comes as a gift from God.

The stewardship of our treasure comes from a need to give out of our gratitude to God.

The Christian seeks no "rewards" for stewardship, yet is rewarded by sharing in the wholeness of life, and by knowing that God's will is being carried out.

Some time ago, an individual who had just completed the arrangements for a planned gift to his church volunteered his feelings about why he had decided to do it.

He said that when he looked to the future, he could see the church as the single entity that he could count on to bring good into the world.

"The world will change in many ways, some good and some bad," he said, "but the stronger Christianity remains, the better place our community, our country, and our world will be. And that is why I made this gift."

This man was spreading the Good News of Jesus Christ, and doing his part to insure that his church would be able to do the same after his death.

He was not concerned with the church's parking problem, or its policy in South Africa.

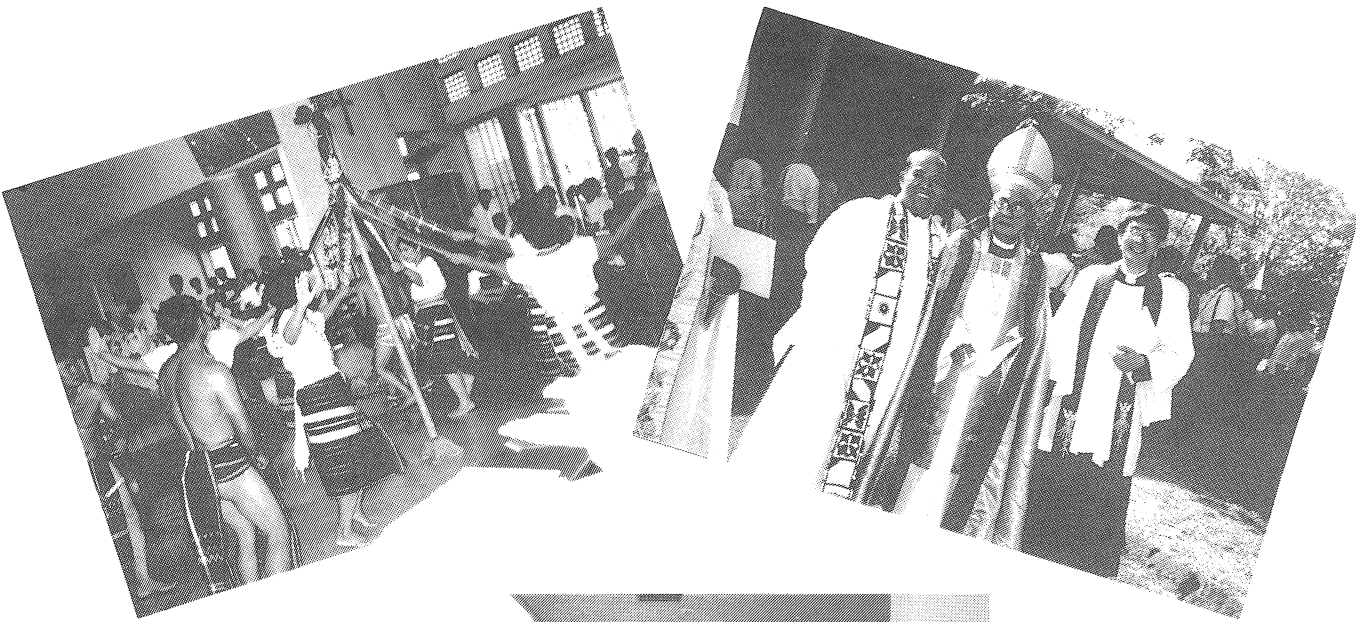
He was concerned about being a Christian steward.

You, too, can help insure that your church will be proclaiming the Good News forever, by being a good steward and remembering the church in your estate planning.

--- Don McKenne, Diocesan Planned Giving Officer.

PHILIPPINE EPISCOPAL CHURCH
GAINS INDEPENDENCE

FR. QUINTERO REPRESENTS HAWAII



Above: Celebrating independence with Dance of Unity.
Right: Former Bishop of the Philippines Lyman Ogilby in procession.



Above: Hawaii's Fr. Quintero (left) with Prime Bishop Richard Abellon.

The Philippine Episcopal Church, celebrated its independence May 1 in festivities underscoring its Filipino identity.

For nearly 90 years the PEC has been a part of the Episcopal Church in the U.S.A., since its organization under Bishop Charles Henry Brent in 1902.

With independence, the PEC became the newest national church in the Anglican Communion. It consists of 5 dioceses, 5 active bishops, some 150 clergy, and about 150,000 baptised members.

Autonomy will make it easier for the PEC to identify with the struggles of the

Filipino people and the "search for national integrity and sovereignty," the Most. Rev. Richard Abellon, prime bishop of the new church, said during the independence festivities.

With the exception of "Lift High the Cross," all the music was written by Asians, a mix of contemporary hymns and traditional native music.

"The liturgy was a lively blend of the majesty of the Christian liturgy and the pageantry of Filipino indigenous music and dance," Al Abainza reported to the Episcopal News Service.

But the prime bishop also insisted

that an independent PEC would stand proudly in the Anglican Communion as "a partner with the other provinces in the service of God."

The Rev. Canon Timoteo P. Quintero, vicar of St. Paul's, Honolulu, and the first of Hawaii's Filipino priests, represented Bishop Hart and the Diocese of Hawaii at the independence festivities.

Also attending was retired Bishop Lyman Ogilby, who served in the Philippines, first as suffragan bishop and then as diocesan (1953-1967). He is the brother of retired Priory dean Peter Ogilby.

Pearl Harbor Rotary again sponsors
immigrant, refugee youth camp at Mokuleia

Again this year the Pearl Harbor Rotary Club sponsored a one-week session at Camp Mokuleia for some 70 immigrant and refugee youth, ages 7-13.

This annual camp provides youth of different cultures and ethnic groups with the chance to interact, improving social skills and mutual understanding.

The club's \$8,200 donation to the Kalihi-Palama Immigrant Service Center made this session possible.

Mary Grems coordinated the week's activities.

18 Episcopal youth from Province 8 (Hawaii and the Western States) and

four adults from the mainland served as the program's counselors.

Members of the Pearl Harbor Rotary Club were also at camp to assist.

The Province 8 youth and adult counselors were part of Social Actions in Hawaii, a chance for mainlanders and locals to learn more about Hawaii and its various cultures.

From June 19-24, they were at Camp Kailua to build community and prepare for the Camp Mokuleia program, June 25-29.

From June 29-July 2, they gathered at St. Timothy's parish and reviewed their days together. --- CL, MG.

Book Room closed
for July

The Queen Emma Book Room is closed during July for inventory and vacation, to reopen Wednesday, August 1, 1990.

"The Book Room exists for the diocese and should be used by all, whether for one book or one hundred books," the bishop's newsletter notes.

"Suggestions for its operation should be passed on to Sue Canham, Book Room manager" at 538-1774.

The Book Room is located on the grounds of St. Andrew's Cathedral, ewa of Davies Hall.

A WORD FROM THE BISHOP

Dear Sisters and Brothers in Christ

In early July, Elizabeth and I will join other members of the National Church's Standing Commission on Peace, and we will travel to Israel for a two-week fact-finding visit.

Another few members of our commission will go to South Africa for the same purpose.

These two areas constitute our church's special interest during this triennium before the next General Convention in 1991.

Out of this visit to the Holy Land and to South Africa will come reports published in the Blue Book that will help the church understand the complex issues which are a part of life in these two areas.

Our report may also include resolutions which will guide the church during the next triennium in responding to the needs of people in both the Middle East and South Africa.

Needless to say, Elizabeth and I have done as much reading on the conflict between Israelis and Palestinians as we can.

The more we read the more difficult to understand becomes the problem. The newspapers have almost daily accounts of worsening conditions, and our own government response is none to easy to follow.

We go because the Bishop of Jerusalem, Samir Kafity, has invited us. He feels the Christian world needs to understand what has happened and is happening to Anglican Christian Arab Palestinians living in occupied territories.

We will have the chance to meet with leaders of our church there and see firsthand the ministry of the Anglicans in the area.

We will also met with Israeli leaders and try to understand the situation from their side. Our itinerary is as balanced as is possible and permitted.

Nearly every Episcopalian who returns from the Middle East and has seen the occupied territories comes back with tremendous empathy and support for the Palestinians.

The ones we see and talk to are, after all, not likely to be PLO terrorists, but

normal people living out their lives under difficult circumstances, trying to be Christian where this is not an easy thing to do.

Palestinians from their perspective, Jews from theirs -- both would like us to take sides, both need support, both want to have the world's approval, or at least that part of the world they think is significant.

Taking sides, furthermore, is ingrained in our way of life from children's sports and school spirit, to support of our government in times of crisis.

The urge to take sides in the Jewish-Palestinian situation is hard to resist.

And behind our thinking and feelings is the terrible memory of the silence of the churches during the 1930's, as Nazi Germany began the Holocaust against the Jews.

On the basis of that memory alone, are we compelled to take sides?

Either side has some claim to our support -- the Jews for all they have suffered and the threat under which they continue to live, and the Palestinians for all they have lost of their homeland and the continued denigration of their rights as human beings.

The Commission on Peace has al-

I have heard low rumblings that somehow our trip to Alaska and the fact that they are in the search process for a new bishop are connected.

Let me assure you no connection exists.

A bishop must serve a diocese for at least five years (another year and a half in my case) before any change can be contemplated -- and much more to the point, I have no desire to go anywhere.

The Lord's call and your call to me to be right here are still clear and vibrant and very welcome in my life.

I go to Alaska at the invitation of personal friends -- and because the Arctic is spectacularly beautiful in mid-June!

--- Bishop Hart in his June 13 newsletter

ready wrestled with the issue of taking sides, and I suspect that wrestling will be a part of our discussions during and after our trip.

We may not have resolved it by the time we write the report. I know this issue is a constant part of my prayers.

Our calling in making this trip, I believe, is to be peacemakers, to sort out as best we can the complex claims for justice and mercy and point toward a way for reconciliation.

I think we need to resist taking sides in such a way that we cut ourselves off from hearing both.

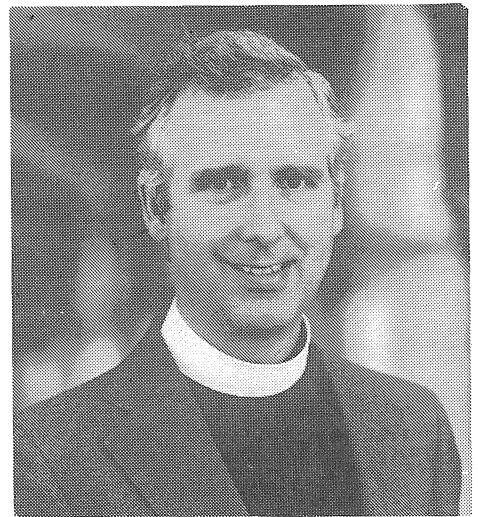
Peace and reconciliation can only be made possible when the integrity of both sides is maintained, when we are willing to walk in the shoes of both Israelis and Palestinians.

The issues here are government policy, military action, terrorism, reaction, intifada. The issues are the rights of people, justice, mercy, compassion.

These things belong to both sides, and taking sides will not help keep our perspective on the way toward peace.

All of this is easy to say from a distance.

It may begin to crumble quickly in the face of children shot with rubber bullets and the dispossessed living in refugee camps in their own land, and in the faces of children and grandchildren of those who went to Auschwitz and Buchenwald, and people who cry out for a place that is free of terrorism.



Bishop Hart of Hawaii.

Justice is never abstract. It must finally deal with people's lives and the quality of that life.

We go on a pilgrimage of peace, and know from the start that pilgrimages are never simple, uncomplicated affairs.

Pilgrimages at least begin and end in prayer, and I ask that of you, for all who live in the Middle East and for all who seek peace.

Faithfully yours,

The Rt. Rev. Donald P. Hart
Bishop

Hawaiian Church Chronicle

ISSN 0274-7154

Serving the Episcopal Church in Hawaii and continuing *The Anglican Church Chronicle* (1882-1910).

Sent to each Episcopal household on parish lists submitted by each church and to friends of the Episcopal Church in Hawaii.

Suggested annual donation: \$6.00.

Copies this Issue: 7,900.

Published: Monthly, except bimonthly in June/July and November/December by the Episcopal Church in Hawaii, 229 Queen Emma Square, Honolulu, Hawaii 96813-2304.

Publisher: The Rt. Rev. Donald P. Hart, Bishop of Hawaii.

Publication/Circulation Office: The Episcopal Church in Hawaii, 229 Queen Emma Square, Honolulu, Hawaii 96813-2304. Telephones: 808/536-7776. For Neighbor Islands: 1-800-522-8418.

Editor: The Rev. John Paul Engelcke.

Editorial Board: Members of the Communications Department, Diocesan Council --- Peter Carson, chair; Keith Adamson, the Rev. Jan Rudinoff, Patricia Zimmer.

Circulation Manager & Assistant to the Editor: Ms. Mary MacIntosh.

Subscriber: Episcopal Life (EL, New York). Episcopal News Service (ENS, New York). Anglican Information (AI, London). Anglican Media Mailing (AMM, London).

Stories and articles submitted should be written legibly in ink and double-spaced, or typed and double-spaced, on one side of the paper.

Please include the writer's name, address, and phone number(s) to facilitate confirmation and checking.

Photos submitted may be either black and white or in color. A glossy finish is preferred. Every effort will be made to return photos, as requested.

Deadlines (text & photos): the 15th (or next weekday) of the month previous to the month. For the double issues: June 15 and November 15.

Printed by Hawaii Hochi, Ltd., 917 Kokea Street, Honolulu, Hawaii 96817.

Mailing prepared by Oahu Bindery Inc., 2278 Hoonee Place, Honolulu, Hawaii 96819.

Second Class Postage paid at Honolulu, Hawaii.

Postmaster: Send address changes to the *Hawaiian Church Chronicle*, 229 Queen Emma Square, Honolulu, Hawaii 96813-2304.

BISHOP'S JOURNEYING

April

17-21 This week after Easter is filled with events surrounding the death and funeral of Senator Spark Matsunaga. The service was at Central Union, but the family requested the Episcopal Burial Office.

Brian Grieves comes through on his way home from the Philippines. On Thursday I take the chapel at Holy Nativity School. The Hawaiian Ministry Commission has its first meeting, and the Diocesan Council meets on Saturday.

22 Elizabeth and I are at Christ Church, Kealahakua, for two services and a meeting with the vestry. They were kind enough to remember my birthday today -- at both services, with two different cakes!

24-29 Elizabeth is off to Alaska for the Province 8 Bishops' Wives Conference. I visit St. Clement's Day School for their chapel and then give blood at the Blood Bank.

The Sloggett Trust meeting gathers
(Continued on page 6)

The *Hawaiian Church Chronicle* is sent to each Episcopal household on parish lists submitted by each church. The suggested annual subscription donation is \$6.00. Those who would like to and can defray *Chronicle* costs, are invited to contribute that amount or more to the *Hawaiian Church Chronicle*, Episcopal Church, 229 Queen Emma Square, Honolulu, Hawaii 96813.

Fr. Crawford priested, Pua Hopkins speaks at CDSP, Fr. Miner's 40th...

KAUA'I

"What happened to all the hymnals?," asked a parishoner of St. Paul's, Kekaha. Nothing, it seems. Just that St. Paul's is growing

"With an average Sunday attendance of 25, there are no longer enough hymnals to go around," reported the *West Kaua'i Episcopalian*, serving St. John's, Eleele, as well.

And for the first time in 9 years, the St. Paul's congregation celebrated Easter at home, not in Eleele.

"The church was adorned in splendor befitting the occasion. Guest organist Rose Marie Johnson assisted the congregation in ringing in the Pascal Feast with a resounding chorus of Alleluias.

"Earlier...St. Paul's processional cross had been found and after a good polishing by Tomo Tokushiga, it was ready to lead the Easter procession.

"The blessing of the new paschal candle stand, a new paschal candle, and the renewal of the baptismal covenant were all a part of the celebration.

"Forty-four people attended the service," *WKE* reported.

The West Kaua'i Episcopal Youth (WKEY) had its first meeting at the home of the co-vicars this May. WKEY is open to all 7-12th graders, with future meetings June 24 and July 22, before the official opening of WKEY's first year this September.

The West Kaua'i churches have co-vicars in the Rev. Elizabeth B. Morse and the Rev. Kelly A. Crawford, Jr., who was ordained to the priesthood May 27 by Bishop Hart.

Fr. Crawford and his wife the Rev. Elizabeth Morse will attend a national evangelism workshop on "how Episcopalians do evangelism" at the Church Divinity School of the Pacific in Berkeley, California, in late July.

Conference leaders include Pua Hopkins from Hawaii and Bishop William Frey of Colorado.

Substituting for the co-vicars will be the Rev. James Jones, professor of homiletics at CDSP, and the Rev. Robert Bettinger, assistant priest at the Church of St. John the Baptist, Capitola, California.

"In an effort to offset their \$21,000 deficit budget, St. John's plans to

publish their first cookbook early this fall," *WKE* reported.

Chaired by Irene Kawane, the cookbook staff expects publication before St. John's annual pancake breakfast, the Diocesan Convention, and, of course, Christmas.

Abe Acoba -- a member of St. Paul's bishop's committee, a student senator, and a graduate of Kaua'i Community College this May -- will attend both a young adult leadership conference and the Episcopal Asian ministry conference this summer, *WKE* reported.

"We are trying to find someone who is interested in working with our children and youth," wrote Fr. Bob Walden, rector of All Saints', Kapa'a, in the May *Kaua'ian*, now edited by Harriet Albao.

Fr. Walden went on to note that Bishop John Howe of Central Florida had remarked at a recent youth leadership conference organized by Episcopal Renewal Ministries that 19 out of 20 people who became Christians make the decision before age 25.

After 25, the figure is only 1 in 10,000.

With this in mind, Bishop Howe asked why the church is "spending 99% of its time and treasure on adults?"

Fr. Walden then observed that "in our diocese, out of our annual budget of over \$1 million, we spend less than \$30,000 (which includes \$15,000 for Camp Mokuleia) on our youth.

"We do not have anyone at the diocesan level who is a paid or volunteer youth worker.

"Is it any wonder that the size of our church is shrinking, when we place so little emphasis on the children and youth?"

Kaua'i has a great tradition of youth work and youth workers. One Kaua'i youth worker became the 7th Bishop of Hawaii, the Rt. Rev. E. Lani Hanchett.

On June 17 St. Michael & All Angels', Lihue, celebrated the 40th anniversary of Fr. Malcolm Miner's ordination as priest. He now serves as associate to the vicar, Fr. Jan Rudinoff.

Fr. Miner has been "a pastor, a college chaplain, a missionary in Alaska, was on an inner city task force in California, and in retirement continues to serve as a resource person and

teacher for the island of Kaua'i," the parish newsletter reported.

"Malcolm is the immediate past president of the North American Board of the International Order of St. Luke the Physician, an interdenominational organization dedicated to healing."

He has written two books, *Healing is for Real* and *Healing and Abundant Life*.

For 19 years he was the executive director of the United Way of Anchorage, the parish newsletter noted.

He and his wife Imogene make their home in Koloa, near Poipu Beach.

He was ordained as a priest in Christ Church, South Barre, Massachusetts, by Bishop William Appleton Lawrence.

OAHU

June 24 saw the annual blessing of the animals at the 10 a.m. service at St. Clement's, Honolulu, with the Rev. Franklin S.H. Chun, chaplain at St. Andrew's Priory School, officiating.

In attendance were Sparky the rabbit, Tessie and Pumpkin the "purebred poi dogs," Lemon Drop the Rhodesian Ridgeback, and Twinkle the silky terrier, among other "creatures great and small."

At this sixth annual blessing, an unnamed parishoner said, "The animals have never made a major fuss, and have never left a mess behind them," according to Esme M. Infante reporting in the *Honolulu Advertiser*.

"A treasure chest is arriving," reports *The Keys*, parish newsletter of St. Peter's, where a collection of 200 Chinese cultural items in reproduction will be displayed.

The Honolulu office of the Coordination Council for North American Affairs of the Republic of China has indicated its willingness to display this collection at the predominately Chinese Honolulu parish.

A Chinese Heritage Center, housing this display as well as materials related to the Chinese community in Hawaii, is an important part of the remodeling plan for St. Peter's parish hall.

These treasures are to be on display

this fall.

"Holy Nativity's 1990 camp at Mokuleia was an outstanding success," reports *Keeping Watch*, the parish newsletter.

"From Friday evening through Sunday afternoon 77 happy campers ranging in age from 14 months through 60+ enjoyed this beautiful spot on the North Shore and delighted in just being together.

"Everyone enjoyed sharing the camp and numerous activities with the Episcopal congregation from Schofield Barracks," the newsletter reported.

"Weekend activities were planned around the *Pilgrim's Progress* theme, giving opportunity for group involvement; arts and crafts; outdoor fun, such as the journey to the Cross and the Shepherd's Treasure Hunt; and quiet time for reflection and play at the beach.

"Elsa Simmons, our dedicated Christian education director, planned the weekend, and her enthusiasm care and love were evident throughout. This is Elsa's third year at Holy Nativity," *Keeping Watch* reported.

Twenty-seven families attended this year, twice the number attending in 1989, and three times those attending in 1988.

The *Episcopal Teacher*, a national publication, recently printed "Jesus and His Friends," a song written by Elsa Simmons with music by Holy Nativity School's music and Hawaiian studies teacher Antoinette Leong.

Fr. Norman Ault honored by Cathedral music fund

To assist and encourage musical presentations by the St. Andrew's Cathedral choir, a memorial fund honoring the Rev. Norman C. Ault has been established at St. Andrew's Cathedral by Godwin and Deborah Pelissero.

Fr. Ault, friend and pastor to the Pelisseros and a much beloved priest, was assistant at St. Andrew's from 1957-1959 and served numerous Oahu and Maui parishes, founding both St. Christopher's, Oahu, and Trinity By-the Sea, Maui.

He was a member of the cathedral's Hawaiian Congregation, where his father, the Very Rev. William Ault, was dean from 1928-1939. Dean Ault was the last priest ordained in Hawaii by the English bishops.

"We are very grateful to the Pelisseros for their generosity in so honoring the memory of Fr. Ault and enhancing the music program of St. Andrew's, where both the Aults served," the present dean, the Very Rev. Holinshead Knight, said.

"Friends of the Aults who wish to contribute to this fund are invited to do so," he added.

Part-time Christian education teacher needed

A part-time position for a Christian education teacher for grades 6-9 is open at St. Andrew's Priory School, Honolulu.

The position involves 10 hours of classroom teaching and a weekly guidance class, as well as participation in chapels and overnight camps.

For an application form, phone the Rev. Franklin Chun, chaplain, at 532-2413 -- or write him at St. Andrew's Priory School, 224 Queen Emma Square, Honoulu, HI 96813.



A tree at the Priory in memory of the late Canon Eugene B. Connell: Carla Connell (with shovel), daughter Elizabeth, grandchildren Christina and Malia, and Fr. David Kennedy, Priory headmaster (left).

Maui clergy "depounding" nets \$1,000, Camp Pecusa July 29-Aug 4...

"When Polly and I visited Father Fan and Doris in New Zealand, we found that he faces a problem that some of us may give him assistance in solving," writes the Rev. Dr. Gerald G. Gifford II, retired rector of St. Elizabeth's.

"Father Fan and Doris are trying to maintain the Chinese Anglican Mission this year without adequate funds."

Next year will be all right, but for this year the funds allocated were insufficient.

Those who wish to help, may send a check (payable to St. Elizabeth's Episcopal Church and marked for the Father Fan Fund) to St. Elizabeth's, 720 North King Street, Honolulu, Hawaii 96817.

"Father Fan and Doris are doing an excellent work with the Chinese community of Wellington," Dr. Gifford noted in *Vine & Branches*, the parish newsletter.

Also at St. Elizabeth's, the Immigrant Fellowship Group meets each Saturday for English classes and other activities, including cooking classes, bingo games, and on May 26 a picnic at Keaiwa State Park. "Everyone is welcome to join the Fellowship Group," *Vine & Branches* reports.

Among those tutoring in English are Lillian Tyau, Gertrude Tyau, and Margaret Chun (mother of Priory chaplain, Fr. Franklin Chun), together with Doris Tyau and Helga Patterson.

Also at St. Elizabeth's are citizenship classes. For further information, call the church office at 845-2112.

"The 1990 Deans' Conference was held in Washington, D.C., at the soon-to-be-completed Washington National Cathedral," the Very Rev. Hollinshed Knight, dean of Honolulu's St. Andrew's Cathedral, reported in the parish newsletter, *Ka 'Upena*.

"Some 85 cathedral deans and their spouses attended from the U.S. and Canada, plus deans from Australia, Malta, and Capetown.

"Highlights included tea at the White House with Mrs. Bush, a reception at the British Embassy, an informal discussion with the Archbishop of Canterbury, plus a number of presentations on timely subjects.

"On a personal note, I do have to say how tremendously gratified Ann and I were by the number of deans who still spoke in glowing terms about last year's conference in Honolulu.

"Many asked to be remembered to their hosts and hostesses who met them at the airport, and the people from St. Andrew's who did so much to make the conference a success."

The Iolani Guild held its spring membership meeting on Saturday, May 26, in the Cathedral's Von Holt Room, with Dr. Richard Kekuni Blaisdell as speaker.

The previous Sunday, a commemorative service in the Cathedral honored Queen Lili'uokalani, with the Rev. Kenneth Perkins, diocesan historiographer and archivist, as speaker. Guild members hosted the reception following the service.

The Church School at St. Andrew's grew this year, not only in numbers, but also "in the scope of our life in the

church," Jenny Wallace, church school director, reported in *Ka 'Upena*.

"The children love to send letters and pictures each week to parishoners who are sick or shut-in.

"Our offering projects include buying bricks for the National Cathedral [10 in all], making cookies and saving cash for IHS, buying chickens for the Third World farmers, and many more.

"We even saved for an ice-cream party for ourselves. (You've got to live a little!)"

In a recent tribute to Sister Evelyn Ancilla, former Sister Superior at St. Andrew's Priory School and currently director of the prison ministry of the Society of the Transfiguration, in Glendale, Ohio, the Rev. Maurice McCrackin wrote,

"She does all she can and goes all the way to help her friends in prison hold on to hope, as she turns over every stone to bring the assistance they need.

"Her prison ministry has become known all across the country.

"It burdens her heart and spirit that she cannot do more for more people, and that now she is partially incapacitated as the result of recent health problems that for months she has not been able to be in touch with her prisoner friends as much as she would like to be.

"We are all praying that she will recover and find herself stronger than ever, as she continues her caring courageous, and persevering ministry" (*Transfiguration Prison Ministry*, spring 1990).

ministry.

"Our office manager, Robert Durand, a man with extensive background in communications is taking up the challenge.

"We thank them both for all they've done...and all they both will be doing to minister with us in times to come."

Maui's Lent also saw the "unpounding" of the Maui clergy, to the profit of Maui generally, as also to themselves. Fr. Zimmer of Good Shepherd lost 11 pounds, *The Shepherd's Staff* reported.

"However, he also lost the competition to the Rev. Heather Mueller, rector of St. John's, Kula, who has designated that the pooled funds from all the churches will be divided among three agencies: the new Maui Child Advocacy Center; Hospice Maui; and the Ka Hale Ake Ola Homeless Shelter Fund.

"When everyone pays up, the proceeds should be over \$1,000," *The Shepherd's Staff* reported.

Also at Good Shepherd, the Easter offering of about \$923 was designated for hurricane-ravaged American Samoa, and the Lenten offering of about \$600 went to the Presiding Bishop's Fund for World Relief.

On the 4th Thursday of the month, St. John's, Kula, prepares a dinner meal for the residents of the shelter in Puunene, reports *Nuhou o ka Ohana/Family News*, the parish newsletter.

And the breakfasts between services have also been a great success, thanks to "the epicurean and organizational skills of the Yurs, the Hirashimas, the Dawsons, the Theobalds, and Sauny Adams."

Paying part of the cost of the new computer at St. John's are the Gold

(Continued on page 6)

IHS, DuTeil celebrate birthdays

IHS was 12 years old and IHS' founder Father Claude DuTeil was 70 on July 1.

There was a birthday party for both with free meals and music, open to the public, at the Iwilei facility on Surner Street, commencing at 2 p.m.

Begun on Fort Street in the heart of downtown Honolulu with peanut butter sandwiches for the needy, IHS now serves Honolulu's homeless with a two-storey facility in Iwilei and a \$1 million budget.

IHS now provides "200,000 meals a year and offers overnight shelter to 215 to 250 people," the *Sunday Star-Bulletin & Advertiser* reported.

Now IHS executive director, DuTeil will become executive director emeritus this July, but will remain a consultant to IHS.

The Rev. Richard Rowe, present managing director, becomes IHS director at the same time.

"IHS is still growing, and this year DuTeil helped supervise planning for new shelters for women with children and for homeless working men," Rowe noted.

"DuTeil also helped with fund-raising for the homeless and most recently tapped his loyal community contacts to try to raise \$5,000 for dining tables for the elderly and ill residents of IHS."

DuTeil was ordained priest by Bishop Harry S. Kennedy in December 1949 and has spent his ministry in Hawaii.

Over the past 41 years, he has served St. Stephen's, Wahiawa (1949-1954); Good Shepherd, Wailuku (1954-1958); St. Christopher's, Kailua (1958-1978); and Honolulu's homeless through IHS.

MAUI

The Shepherd's Staff, parish newsletter of Good Shepherd, Wailuku, has a new format and editor.

"Deacon Helen Jennings has borne the heat and burden of our newsletter day each month, as she voluntarily kept on in this difficult job," wrote Fr. Layton Zimmer, rector.

"She has done a wonderful work for us all, in the Name of the Lord, and we are endlessly grateful to her. Now, she relinquishes this particular part of her



Daughters of the King members at St. Timothy's, Aiea (left to right): Shauna Jones, Carmen Tapiolas, Mary Anne Memminger, Judy Kaupp, Eloise Caldwell, Nancy Jenks, Mimi Edwards, and Janet Kath.

Clowns, kayaking, crafts, snorkeling, secret pals, cabin skits, swimming, and new friends!

All this and more is in store for the lucky young people attending the 1990 session of Camp Pecusa on Maui from July 29 to August 4.

"All boys and girls who are finishing 4th, 5th, and 6th grades can register for the camps, which is under the direction of the Church of the Good Shepherd this summer."

Registration forms and additional information are available through the pastors of the Maui churches or Good Shepherd's parish office (244-4656).

"The staff of the camp will include Fr. Zimmer, youth minister Ricky Melchor, office manager Bob Durand, and various Episcopal and Lutheran clergy from Maui," *The Shepherd's Staff* of Good Shepherd reported.

Tooman scholarship at HPA, Kealakekua's 'youth at risk' ministry...

Award Bonus Gift Coupons collected by parishoners. Blanche Hew again heads this program, which over the years has obtained a mircrowave, coffee pots, a stove, and a typewriter for the Kula congregation.

"As in the space shuttle program, the mission control person says, 'We have lift-off!,' well, we have 'sides and a roof [on the new building], which is just like lift-off!"

"It looks great! Excitement is building, no pun intended!," reports *Kahikolu Lono*, the newsletter of Trinity Church By-the-Sea, Kihei.

Tax deductible contributions may be made to the Trinity Church Building Fund, P.O. Box 813, Kihei, Hawaii 96753.

The parish's fund-raising commis-sion has a booth at the annual Maui Jaycee's Fair -- July 13, 14, 15. "Trinity will be pushing nachos! Nachos! And more nachos! So, put on your sombrero and serape, and hustle down to the War Memorial complex the weekend of July 13-15."

Among the congregation's outreach ministries are providing dinner for the

shelter for the homeless in Puunene the first Saturday of each month, and special collections each 3rd Sunday for the shelter for abused women.

Collected on June 17 were toilet articles (toothpaste, toothbrushes, soap, deodorant, etc.). Slated for the July 15 collection are paper products (tissue, toilet tissue, paper towels); and for August 19 collection, canned or boxed foods.

"And, of course, monetary contributions are always welcomed! For further details, contact Barbara Clark [at] 879-8445," *Kahikolu Lono* reported.

HAWAII

At St. James', Kamuela, nearly \$575 was received in the mite box offering for the work of the Presiding Bishop's Fund for World Relief.

The Board of Governors of the Hawaii Preparatory Academy announced at commencement that "it had created a \$20,000 open-ended scholarship fund in the name of A. Ronald

Tooman," the departing headmaster. "This particular scholarship will be specifically administered to aid Waimea children who wish to attend HPA," St. James' parish newsletter reported.

HPA's alumni association award went to Vivienne Tooman, "in recognition of her eleven years of service to HPA, not only as a teacher, but also as a driving force in creating a fine arts program at the Academy."

A memorial concert and requiem eucharist were celebrated Sunday, May 26, at St. James' Church for Harry Dove, distinguished retailer of quality British cars (Rolls Royce and Jaguar) and participant in community affairs.

Conducting the concert were longtime friends of the Doves, John McCreary, organist and choirmaster of St. Andrew's Cathedral, and Neva Rego, soloist.

The eucharist was celebrated by the Rev. Dr. Jerry Reynolds, rector, assisted by longtime friend of the Doves, the Rev. John Morrett, retired, former rector of Holy Nativity and dean of St. Andrew's Cathedral.

Harry's wife Lorraine was long as-

sociated with the Honolulu Theatre for Youth, and her reading as lay reader was distinguished by clarity and elegance.

"This youth program is truly unique for Kona," notes *Nu Oli* of Christ Church, Kealakekua.

"It is an outreach program that focuses on specific concerns that teenagers have, particularly the 'Youth at Risk,'" writes Jack Brennick, parish youth advisor.

"This is a general term for any teenager who may be abusing drugs and alcohol, is sexually active, is from a broken family, or is 'hanging around' those kinds of teens.

"This youth program has received approval and recognition from the local teen shelter," he reports.

And the local Children's Protective Service (CPS) has made referrals, as has the Probation Department.

A teen outing to Kalapana, slowly being destroyed by the lava flow, was planned, so that teens at risk may "go to a place where people 'really have

(Continued on page 8)

BISHOP'S JOURNEYING (from page 3)

at All Saints' on Kauai, and the churches there are grateful for the generosity of the Sloggett family.

Home again two hours later, and then off to the Big Island on Friday afternoon to lead a vestry retreat for St. James'. Home on Saturday night and a rare Sunday for my daughter and me to go to church and sit together!

May

4/30- My annual medical checkup
5/5 finds me in excellent health -- still low in cholesterol. How is that possible in this diocese!

Elizabeth returns from Alaska on Monday. Breakfast with my denominational counterparts and some work on the 1991 budget.

Friday begins with joint meetings between the Lutherans, Roman Catholics, and ourselves as we study the document on *Baptism, Eucharist, and Ministry*.

The day ends at Camp Mokuleia with BACAM interviews for all our aspirants for Holy Orders. Saturday continues that conference at Mokuleia with an opening meditation and sharing from many on issues of ministry, followed by sessions with each of the aspirants.

Home late to finish preparing for Sunday.

6 Off to St. George's at Pearl Harbor, and I am glad to see good signs of this mission once again on the up-swing. The rotation of military families makes a tremendous difference here.

I zip back to the Priory for a noon wrap-up meeting of BACAM, and then Elizabeth picks me up from there to go to Kamehameha Schools Chapel for a shared ecumenical service, finishing up our three-way dialogue with the

Lutherans and Roman Catholics.

8-12 We begin planning for the diocesan convention this fall (October 26-27).

On Thursday I have my annual visitation to Iolani School. We have baptisms and confirmations outside, since no building is large enough for the entire student body. I tried, somehow, to weave Teenaged Mutant Ninja Turtles and baptism together. It grabbed their attention at least!

The Clergy Family Project group meets on Friday evening. On Saturday the Cathedral hosted a Faith Fair with many discussions and classes offered by an ecumenical collection of friends. Bishop Ferrario and I watch as a host of "mitered bishops" (I think I even saw my wife among them) come to sign the Nicene Creed, which was the subject for the day.

13 Mothers' Day and my visit to Holy Nativity with confirmations at both services. In the evening I visit our House in Mililani, which has been under the able guidance of Richard Green, a seminarian intern from CDSP. Good to see a congregation beginning to form in this growing area.

14-19 Secretaries' Day brings twenty or more of the true servants of our church together under the direction of Ruby and Mary, the heart and soul of my office. Elizabeth starts them off with an appreciation of how much my former secretaries have meant, not just to me, but to my family.

In mid-week, I make a quick trip to Good Shepherd to meet with the rector and vestry. The mission clergy gather for discussion and mutual support on Friday. The Diocesan Council meets, and I am off to Kauai with Elizabeth on

Saturday.

20 St. Michael's and All Angels' in Lihue is bursting its seams in many wonderful ways. Their plans for new buildings move ahead, and the spirit is high.

Later, back in Honolulu, I join the Methodists in bidding Godspeed to the Reverend Jim Swenson and his wife Joan, as they move to California after twenty-six years of ministry here -- the last six as district superintendent.

21-26 Out to Mokuleia on this day off, and I deconsecrate the old chapel at the camp before it is carted away, or crumbles in a heap of termite droppings! Ed Bonsey then takes a group of us on a famous "short" hike of four or five hours.

The regional presidents of the seven Regional Councils meet, and then the Samaritan Center staff leads the clergy in an excellent discussion of transference and counter-transference issues in parish life.

A quick trip to Seabury Hall School for their groundbreaking for a new middle school building to replace the old boy's dormitory.

Ascension Day and activities center at the Priory School. I preach and preside at their service and agathering around the Coral Cross. Off to Kula on Maui and a vestry dinner or Saturday evening.

27 Two good services at St. John's, with confirmation and warm hospitality.

Elizabeth and I have to move along faster than usual to pass through Honolulu and catch the plane for Kauai and the ordination of Kelly Crawford to the priesthood in the late afternoon. St. John's, Eleele, is full to overflowing for this joyful service.

We are home by 10 p.m. and ready for a relaxing Memorial Day.

June

5/29- A busy week with meetings and
6/2 graduations.

I preach at the 5th Annual AIDS Service at Harris Memorial Methodist Church.

Epiphany School's 6th grade graduation is on Thursday evening, and the youngsters as usual steal the show.

Elizabeth and I are off to Seabury Hall for baccalaureate and then commencement.

I am home just in time on Saturday to jump into line at Iolani and be present for the 216 seniors to graduate.

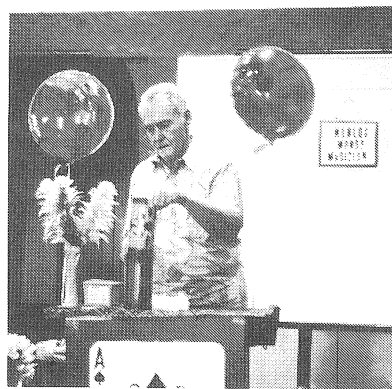
3 My official visitation to the Cathedral takes place today, and an excellent group is confirmed, along with a few from St. Clement's. The Cathedral is host for the Priory's Commencement in the late afternoon, and I feel thoroughly graduated this year!

5-9 A week spent catching up in the office and meetings. The Commission on Ministry reviews the BACAM weekend. A pleasant vestry dinner at St. Barnabas' ends the week.

10 This Sunday takes me to the Ewa Plain and to St. Barnabas' where they are working hard to make evangelism be part of their everyday lives.

In the afternoon, I am privileged (along with Lynette Schaefer and Jonathan Ogujiofor) to celebrate and preach at the marriage of Jane Sherwood and Robert Masuda. Jane has done a fine job on my staff these last two and one-half years. She will be missed, as they move to Chicago.

CATHEDRAL DAY '90 PICTURE POTPURRI



Next Cathedral Day: Saturday, April 27, 1991

Clockwise from upper left: Roman Catholic Bishop Joseph Ferrario, Bishop and Mrs. Hart. Lutheran Pastor Dale Burke in the pulpit at

St. Peter's. Everyone enjoys the puppet show. Peter Ogilby works his magic. "Spirited Movement" in the Priory Gym.

Lanai mission, Cross-cultural ministry, Hawaii Loa on Diocesan Council agenda

"In response to an inquiry from a Lanai family that are Episcopalians, I asked Fr. Walt Harris of Holy Innocent's and the Maui Clericus to discuss the feasibility of starting services on Lanai," the Rev. Peter Van Horne, executive officer, reported to the Diocesan Council this May.

St. Stephen's calls Fr. Besenbruch as rector

The Rev. Peter R. Besenbruch has been called as rector by St. Stephen's, Wahiawa, Bishop Hart announced in his May newsletter.

Fr. Besenbruch served previously at St. Stephen's as an interim pastor, prior to Fr. Richard Rowe's call as rector.

His wife Val is a physician in the U.S. Army and will be stationed at Tripler Army Medical Center. They have a son Sam.

Fr. Besenbruch was educated at Carleton College in Minnesota (B.A. 1979) and the Seabury-Western Theological Seminary in Illinois (M. Div. 1982).

"The first service was held on Easter Sunday, and the officiant was Fr. Zimmer of Good Shepherd.

"Last Sunday (May 13) the Rev. Heather Mueller of St. John's was the officiant," Fr. Van Horne noted.

Lanai is the one major Hawaiian Island without an Episcopal Church.

Cross-Cultural Ministry

To enable the church to be inclusive of ethnic groups and to identify the leaders of those groups and enable their leadership are two main objectives of Province 8's Cross-Cultural Ministry Development (CCMD), noted Pua Hopkins, whom the Council invited to speak on CCMD at their May meeting.

Other CCMD objectives are to create partnerships, provide resources, and to sensitize the structures of the church to the needs of ethnic groups.

CCMD thus seeks to equip the church to respond effectively to the needs of America's changing ethnic mix.

Funding comes from the national church, the provincial budget, and from some of the dioceses in Province 8,

reported Hopkins, a CCMD member-at-large and professor of Hawaiian at the University of Hawaii-Manoa.

Bishop Hart is now CCMD president.

The Rev. Jerry Drino, CCMD executive director, was to visit the Diocese of Hawaii this June, Hopkins indicated. His immediate predecessor as executive director was Sandra Bright, wife of the former dean of St. Andrew's Cathedral.

Pua Hopkins is the wife of the Rev. Charles G.K. Hopkins, vicar of St. John's By-the-Sea, Kahaluu.

CCMD and Fr. Drino were featured in the January 1990 *Chronicle*.

In other business, the Diocesan Council this May:

--- Approved funding major repairs to St. Paul's, Makapala, Island of Hawaii.

--- Heard a recommendation that financial and program planning be on a 3-5 year basis.

--- Learned that KPISC is seeking a new executive director.

--- Approved a \$10,000 grant to the Episcopal Church on West Kauai (St. John's, Elele, and St. Paul's, Kekaha).

--- Heard the report of the visit of the Department of Affiliated Organizations

(Continued on page 8)

Peter Ogilby is newest BOMA member

Peter Ogilby, a member of St. Andrew's Cathedral and retired dean of St. Andrew's Priory School, is the latest addition to the Board of Ministry on Aging, BOMA coordinator George W. Wiggins announced.

Peter also serves on the cathedral's program/planning and pastoral care committees, where he does volunteer pastoral calling.

In addition he serves on the diocese's social ministries committee, and on the advisory committee for the Salvation Army's adult rehabilitation center.

"Welcome aboard, Peter!," said Wiggins, who also urged all Episcopal churches to become members of the Episcopal Society on Ministry to Aging (ESMA) and annually celebrate Age in Action Sunday.

THE CALENDAR

July	29	8th Sunday after Pentecost. (Proper 12)
1		August
4th Sunday after Pentecost. (Proper 8) Bishop at St. Jude's. Kauai Budget Area Meeting, St. Michael's, Lihue, 2 p.m.	3	Commission on Ministry, 1 p.m.
1-7 Bishop at Camp Mokuleia as chaplain.	4	Standing Committee, 9:30 a.m.
4 The Glorious Fourth: Independence Day. Diocesan Office closed.	5	9th Sunday after Pentecost. (Proper 13)
6 Commission on Ministry, 1 p.m.	6	Transfiguration of Our Lord.
7 Standing Committee, 8:30 a.m. Hawaii Episcopal Youth Board of Directors, 9 a.m. Clergy Family Project Meeting, 11 a.m.	11	HEPAM meeting, 1-3 p.m.
	12	10th Sunday after Pentecost. (Proper 14)
	15	St. Mary the Virgin. Diocesan Planned Giving Committee, Cathedral, Room 8, noon.
8 5th Sunday after Pentecost. (Proper 9) Bishop at St. Matthew's. Bishop visits Middle East with the Standing Commission on Peace, followed by vacation, returning August 8.	17	September Chronicle text & photo deadline, 4 p.m.
10 Regional Council Conveners, Cathedral Library, 10 a.m.	18	Admission Day. Diocesan Office closed.
14 Council Departments meet 8-10 a.m.. Diocesan Council, 10 a.m.- 3 p.m.		Departments meet, 8-10 a.m. Diocesan Council, 10 a.m.- 3 p.m.
15 6th Sunday after Pentecost. (Proper 10)		
16 August Chronicle text & photo deadline, 4 p.m.		
18 Diocesan Planned Giving Committee, Cathedral, Room 8, noon.		
22 7th Sunday after Pentecost. (Proper 11)		
23 St. Mary Magdalene		
25 St. James the Apostle.		
25-28 EAM Consultation, Los Angeles.		
28 Diocesan Institute Board of Directors, St. Clement's, 9 a.m.-noon.		

ECW Calendar

7/1	IHS Birthday Party, 2 p.m.
7/12	Executive Committee, St. Mary's, 9:30 a.m.
8/17	Game Day, St. Timothy's 9:30 a.m. Annual reports due.
8/26-31	Synod.
9/13	Board meets, 9:30 a.m., tba.
10/7	CPC Sunday.
10/26	Annual Meeting, St. Andrew's, all day.
11/2	Church Women United World Community Day.
11/10	Retreat, tba.
12/13	Diocesan Board meets, 9:30 a.m. Christmas party, 2615 Tantalus, 10 a.m.

The Episcopal Church in Hawai'i

HAWAIIAN CENSUS

Aloha kakou!
A voluntary census of our Hawaiian membership will give the Diocesan Commission on Native Hawaiian Ministry more accurate information about Episcopalians who are descendants of the first settlers of *Hawai'i nei*.
This information can provide a valuable data base for planning activities and developing programs to address needs that you can help identify.
We do not wish to appear *maha'oi* or *niele* in asking for your *kokua*. We do wish to know the church members of our *lahui*, so that together we may develop and strengthen our sense of extended family in the church *'ohana*, in a spirit of renewal and affirmation of one another.
Mahalo for your *kokua* and support for the work of the commission.

Family Name _____

Your Name _____

Spouse's Name _____

Children's Names & Ages _____

Address _____

Phone _____ Your Parish/Mission _____

Blood Quantum %: Please use these three figures: 100 (= 100%),
50 ≥ (= 50% or more), or ≤ 50 (= less than 50%)

You _____ Spouse _____ Children _____

How can your church experience be made more meaningful to you as a Hawaiian? (Attach additional sheets if necessary.)

May we include your name an parish (no addresses or phone numbers) in a directory for use within the church? Yes _____ No _____

Please return this form to your pastor or mail it directly to:
The Rev. Charles G.K. Hopkins
Commission on Native Hawaiian Ministry
The Episcopal Diocese of Hawai'i
229 Queen Emma Square
Honolulu, Hawai'i 96813

Diocesan Council: Jane Sherwood honored... (from page 7)

to Seabury Hall (Maui), Camp Pecusa (Maui), St. Andrew's Priory (Oahu), and Hawaii Loa College (Oahu). CCMD also falls within this department's purview.
--- Learned that Hawaii Loa College, Seabury Hall, and the Priory are all contemplating capital fund drives and heard the hope that they would "not work in conflict with each other" but see that "some coordination is provided."
--- Honored Jane Sherwood, ministry development officer, on her last meet-

ing with the Council and received her thanks for the "support, care, and concern shown her."
--- Learned that Bishop Hart had deconsecrated the Chapel of the Holy Spirit at Mokuleia. The building has been sold and is being moved off the property for other uses.
--- Heard that Seabury Hall begun construction of a new middle school building.

Hawaii Loa College

At the April meeting of the Council, Chuck Swanson, a member of St. Andrew's Cathedral and of the board of trustees of Hawaii Loa College, spoke at the invitation of the bishop on the college, its future, and the discussions with Hawaii Pacific College.
Trusts and foundations have been hesitant to fund operating expenses and have suggested that Hawaii Loa merge with Hawaii Pacific, Swanson reported.
Hawaii Loa has a current enrollment of 595 and an annual income from gifts

of about \$1 million, with its own land and facilities in Kaneohe. Tuition covers 40% of the operating budget.
Hawaii Pacific has about 450 students and meets in leased space in downtown Honolulu.
Some members of the Hawaii Loa board approve a merger.
Of Hawaii Loa's enrollment, 50% is from Hawaii, 25% from the mainland, and 25% from the Pacific Basin.
Tuition is \$7,000, with room and board an additional \$4,000.
A merger of Protestant-founded Hawaii Loa with Roman Catholic Chaminade is not likely, Swanson noted, nor is the development of college land for additional income, as the deed stipulates educational use only.
Council and bishop both expressed their gratitude to Mr. Swanson for his report.
At the April meeting, the Council also unanimously voted the transfer of the real property on Guam owned by the Episcopal Church in Hawaii to the Episcopal Church in Micronesia.

HAWAI'I

(from page 6)

problems."
Fr. Reg Rodman is rector of this South Kona parish.
"Next month *Nu Oli* will feature an article with a question that gets asked many times, 'Will there be more teens in church on Sunday,'" Brennick promises.

The *Hawaiian Church Chronicle* is sent to each Episcopal household on parish lists submitted by each church. The suggested annual subscription donation is \$6.00. Those who would like to and can defray *Chronicle* costs, are invited to contribute that amount or more to the *Hawaiian Church Chronicle*, Episcopal Church, 229 Queen Emma Square, Honolulu, Hawaii 96813.

Lockwood appointed Canon for Ministry

The Rev. Marcia Lockwood, a member of the staff of St. Andrew's Cathedral, has been appointed Canon for Ministry at the cathedral by Bishop Hart, effective June 3, 1990.