

103307  
HAWAII HISTORICAL SOCIETY  
550 KAWAIAHAO STREET  
HONOLULU, HI 96813

# HAWAIIAN CHURCH CHRONICLE



Bishop-elect Donald P. Hart and his wife, Elizabeth, on arrival in Hawaii, September 29.

## 85th ECW CONVENTION

The Episcopal Church Women of Hawaii meet in annual convention for the 85th time Friday, November 14, in Honolulu, under the presidency of Annette Jim, at St. Andrew's Cathedral.

Registration commences at 8 a.m. in the Von Holt Room, followed by the Eucharist (8:30), with Bishop-elect Hart as celebrant and preacher. At this Eucharist there will be the United Thank Offering In-gathering.

Registration continues and coffee follows in the Von Holt Room after the Eucharist.

The ECW annual business meeting is called to order at 10 a.m. The order of business includes credentials, greetings from the Bishop-elect, introduction of new clergy and their spouses, the minutes of the last annual meeting, reports of officers and committee chairs (as circulated), the Treasurer's report and presentation of budget and assessments.

The proposed 1986-1987 budget totals \$4,475 and is based on 0.884% of the 1986 Diocesan assessments. The new budget (Elizabeth Cubberly, Treasurer) exceeds the past one by \$225, with the following allocations: Administration (\$450), Publications (\$650: newsletter; \$200: journal), Discretionary (\$100), Travel (\$850), Christian social relations & education (\$500), Triennial travel (\$1,000), Annual ECW convention (\$300), Program (\$125), Hospitality (\$200), UTO expense (\$75), and Miscellaneous (\$25). UTO expense, Program, Travel, Journal, and Administration are greater than last year; Newsletter is less.

Following consideration of the budget, the ECW will pledge to the 1986-1987 Specials selected by the Christian Social Relations Committee headed by Mary Kay Lowery. The four Specials:

- The Bishop's Discretionary Fund. "This fund is our top priority each year. During 1986-87, the money pledged will be used by Bishop-elect Hart for his work within the Diocese and the community, helping both clergy and lay people in emergency situations."

- Hospice of Kona. "Funds are needed to train volunteers to support and care for the dying and their families in the Kailua-Kona area of the Island of Hawaii. Executive Director Marcia Lockwood anticipates that Hospice of Kona will be serving 10 clients by the end of 1986."

- St. Barnabas' Church. "Our mission church in Ewa Beach desperately needs a new roof and must replace termite-eaten window frames. The Rev. John B. Connell, Vicar, has asked for our financial assistance to help make necessary repairs."

- Thailand Refugee Assistance. "The Rev. John J. Morrett has requested our help for the Karen people (a minority tribe fleeing across the border into Thailand to escape oppression). He hopes to establish an Anglican Center at St. Gabriel's Church in Noe Bo where these devoted Christians can learn more about their Lord in their own language."

Last year's pledges to the Specials totalled \$11,093 and went to the Bishop's Discretionary Fund, Canterbury House, Kalihi-Palama Immigrant Service Center, and St. Philip's, Maili.

Following the appointment, election, installation of officers, and noonday prayers, the ECW adjourn for lunch at St. Peter's parish hall, hosted by that parish's ECW. Luncheon: \$5.

Following luncheon (1:30 p.m.), Lynne Waters, reporter and producer

(Continued on p. 8)

## CONVENTION 1986

The 1986 Diocesan Convention, the first under the presidency of Bishop-elect Donald Hart, convenes in St. Andrew's Cathedral, Honolulu, at 7 p.m., Friday, November 14, for worship, the Bishop-elect's address, and the preliminary organization of Convention.

Delegate registration precedes the opening service, 4 to 6:30 p.m.

Saturday, November 15, Convention reconvenes at the Hilton Hawaiian Village, 2005 Kalia Road, Waikiki. Late registration for delegates (7:30-8 a.m.) precedes the first Convention legislative session (8-11:45 a.m.). Noonday prayers and luncheon follow. An afternoon legislative session (1:30-5 p.m.) concludes the business of Convention. The Convention Banquet follows at the hotel (6-10 p.m.).

Sunday, delegates and observers return to the Cathedral for the Convention Eucharist, followed by a reception.

(The above was the schedule at press-time.)

Included among the business of Convention will be the election of members of the Standing Committee, the Diocesan Council, and the Chapter of St. Andrew's Cathedral (see pp. 4, 5); the consideration of the 1987 budget; and the debate on various resolutions.

One important item of Convention business: the petition of Trinity Church By-the-Sea, Kihei, for parish status, with the Rev. Morley E. Frech, Jr., the church's last Vicar as first Rector.

There were three resolutions in the first Diocesan Convention mailing:

Resolution 1, entitled "100th Anniversary Celebration of the Nippon Sei Ko Kai (Anglican Church in Japan)," is sponsored by the Japanese American Ministry Committee, Fr. Morimasa Kaneshiro, chair.

"Be it resolved, that we, the 1986 Diocesan Convention of the Episcopal Church in Hawaii, extend our aloha, greetings and congratulations to the Most Reverend Christopher I. Kikawada, Primate, and [to the] Nippon Sei Ko Kai on the occasion of its 100th anniversary celebration of its founding. It is to take place on May 16, 1987, at Osaka, Japan.

"That, we, in our various congregations, offer our prayers on Sunday, May 17, 1987, thanking God for the establishment and growth of the Nippon Sei Ko Kai and asking God to guide its continued growth into the future."

Resolution 2, entitled "Sanctity of Life," asks that the Diocese study "the issues of abortion."

"Be it resolved, that the implementation of the resolution passed by the 17th annual Diocesan Convention (1985), calling for an in-depth study of the issues of abortion, we given the highest priority in the coming year under the leadership of our new Bishop and the appointed Commission.

"Be it also resolved that the findings of the Diocesan Commission be submitted to the Executive Council by June 1987, as requested by the 68th General Convention, Resolution #A-85.

"Be it further resolved that the findings of the Diocesan Commission be communicated to our congregations for further discussion, and that a report be submitted to the Diocesan Convention in November 1987."

The abortion study voted by Diocesan Convention in 1985 never got underway.

Resolution 2 is sponsored by Calvary Episcopal Church, Fr. Sarge Edwards, Rector, and the Calvary chapter of the National Organization of Episcopalians

(Continued on p. 8)



Elizabeth Hart with the Rev. Dorothy Nakatsugi, Diocesan staff to Ministry Development (Laity & Diaconate).

# 2 NEW RECTORS

## THE REV. KAREN S. SWANSON Epiphany's New Rector

The Rev. Karen Swanson, formerly Religion Teacher and Elementary School Chaplain at St. Andrew's Priory School, Honolulu, has been chosen to succeed Fr. Peter Van Horne as Rector of the Church of the Epiphany, Kaimuki.

The Rev. Mrs. Swanson was born in Faribault, Minnesota, and was educated at St. Olaf College, Northfield, Minnesota (B.A. 1978) and the Church Divinity School of the Pacific, Berkeley (M.Div. 1983). While at seminary she interned at St. John's, St. Cloud, Minnesota (one year, full-time), St. Thomas', Canyon City, Oregon (summer, full-time), and at Christ Church, San Francisco, and St. Paul's, Walnut Creek, California (part-time during her three CDSP years).

The Rev. Mrs. Swanson is married to the Rev. David Ota, Vicar of Good Samaritan, Palolo, and Chaplain, UH-Manoa. He serves from 10th Avenue mauka; she, from 10th Avenue makai.

Swanson is the first woman Rector of an Oahu Episcopal Church. Her duties also include oversight of and instruction in the well-regarded Epiphany Episcopal School, grades K through 6.

The Rev. Mrs. Swanson's institution as Rector is scheduled for Sunday, November 9, at 7:30 p.m. Clergy: red stoles.

## THE REV. JAMES E. FURMAN St. Peter's New Rector

The Rev. James Edmund Furman, Rector of the Church of Saints Peter and Paul, El Centro, California, has been chosen Rector of St. Peter's, Honolulu, to succeed the Rev. Richard Rowe, now Rector of St. Stephen's, Wahiawa.

Fr. Furman is a native Californian, born in Long Beach, May 30, 1947. Educated at McKenna College of the Claremont Colleges (B.A. 1969),



The Rev. James E. Furman, St. Peter's new Rector.

Stanford (M.A. 1970), and the Church Divinity School of the Pacific (M.Div. 1973), Furman has served churches in Glendale and Coronado in California.

Furman is a frequent contributor of articles and reviews to the distinguished Episcopal monthly, *The Living Church*.

He comes to one of Hawaii's most distinguished parishes, celebrating this year its Centenary. A previous Rector was chosen the 7th Bishop of Hawaii, the Rt. Rev. E. Lani Hanchett. A child of the parish, the Rev. Winston Ching, serves the Episcopal Church Center as Staff Office for Episcopal Asia/Ministry. And the parish has produced a host of saints: Yap See Young, Kong Yin Tet, Popo Kong, Mabel En Kui Chung, James Kau, Sam Ching, and more — both living and dead. St. Mary's, Moiliili, was founded and maintained as a mission for work among the Japanese by this predominately Chinese church.

St. Peter's has been blessed with a distinguished series of clergy, in addition to those mentioned above: the Rev. David Kennedy, now Headmaster of St. Andrew's Priory School; the Rev. Franklin S.H. Chun, and Fr. Paul Savanack, of blessed memory.

Fr. Furman's institution as Rector is tentatively scheduled for December 5.

## INTERIM MANAGEMENT TEAM DISBANDS

With the arrival of Bishop-elect Hart in Hawaii the Interim Management Team, which has seen to the day-to-day and long-term management of the Diocese since Presiding Bishop Browning's departure, has disbanded, so that Bishop-elect Hart "may immediately assume the authority we have been exercising," writes the Rev. David Kennedy, Vice-President of the Diocesan Council, and a member of the Interim Management Team, together with Tom Van Culin, President of the Standing Committee, and John A. Lockwood, Chancellor.

In his letter on behalf of the Team, Kennedy thanked the Diocese "for the trust you placed in us, and we hope that we have fulfilled your expectations of us. We are grateful for the prayerful support shown to us, and we now join in offering that same prayerful support to Bishop-elect Hart."

## SIX APPROVED AS DEACONS

Five students of the Diocesan Diaconate Program have been approved for ordination as Deacons: Imelda Padas-

dao of St. Paul's, Honolulu; Charleen Crean of St. George's, Pearl Harbor; Marilyn Brown of St. Christopher's, Kailua; Kenneth Jackson of St. Clement's, Makiki; and Roberta Kuschel of St. Christopher's.

Also approved is Steven Bonsey, son of the Fr. W. Edwin and Katie Bonsey of Holy Apostles', Hilo, and a graduate of Yale College and the Yale Divinity School.

Ordination of the five is scheduled for Sunday, December 14, at 7 p.m. in St. Andrew's Cathedral.

## ST. TIMOTHY'S COLEEN MOMOHARA HONORED

Coleen momohara, Kindergarten teacher at St. Timothy's Children's Center (STCC), was named 1986 recipient of the Phyllis Loveless Teaching Award of Excellence.

This award is for teachers working with 2-to 7-year-olds and has been given by the Hawaii Association for the Education of Young Children (HAEYC) since 1970.

Momohara has a master's degree in early childhood education and has been a teacher at St. Timothy's since 1980.

In addition to her teaching duties, she is faculty representative to the SJCC board of directors and an administrative assistant with that school.

## QUEEN EMMA BOOKROOM NEWS

The Queen Emma Bookroom has just received shipment of the *Book of Common Prayer* and of the 1982 *Hymnal Companion* in large print. BCP \$29.95. *Companion* \$45.95.

The shelves are bulging with many favorites on prayer:

- *My Utmost for His Highest*, Chambers.
- *Prayers for a Lifetime*, Rahner.
- *The New Book of Christian Prayers*, Castle.
- *Be Still and Know: A Study in the Life of Prayer*, Ramsey.

Available Confirmation materials include:

- *Learning Through Liturgy*, Neville and Westerhoff.
- *Grow in Grace*, Foxworth.
- *Exploring Faith and Life*, Wolfe.

Advent calendars and candles are in stock, along with a large selection of Christmas cards and gifts. The Bookroom can arrange imprinting for early orders.

Be sure to check the Bookroom's display at the Diocesan Convention.

Also, two important November dates to remember:

- November 9 — Kristen Zambucha will review her own Polynesian books at Tea Time, 2 p.m. Tea alone: 75¢. Tea and sandwiches: \$3.
- November 28 (the day after Thanksgiving) — Shop away from the malls' madness at the Bookroom.

Plenty of parking, Christmas package wrapping, and eggnog. 9:30 a.m.-6 p.m. Regular Bookroom hours: Monday - Friday, 9:30 a.m.-3:30 p.m. Sunday, 9 a.m.-12 noon.

## BOOKS

*The Oxford Book of Prayer* (Oxford: University Press, 1985). General editor: George Appleton. Pp. xii + 397, with an index of authors and sources. Paperback

Massey H. Shepherd, Jr., *A Companion of Prayer for Daily Living*



Hawaiian lass in ti-leaf hula skirt at Holy Apostles' Pre-School, Hilo.

(Wilton: Morehouse-Barlow, 1978). Pp. x + 107, with an index of subjects and notes on authors.

The finest collection of prayers in the English language remains the *Book of Common Prayer*, and this has been so since 1549.

But the BCP has its omissions, like a prayer for one large part of the Church — Sunday school students, teachers, and staff.

And the BCP's emphasis is corporate worship (= "common prayer"), rather than the personal life of prayer, although the "Daily Devotions for Individuals and Families" (BCP, pp. 136-140) and a collection of some 70 prayers and 11 thanksgivings (BCP, pp. 810-813) vastly assist a BCP-based personal prayer life.

However excellent the BCP, the earnest Episcopalian finds additional prayer collections helpful. *The Oxford Book of Prayer* is a rich treasure trove (1,120 prayers) drawn principally from Christianity, but also from humankind's many spiritual traditions. "Prayers of Adoration" (1-39) form the first section. Prayers from the Christian Scriptures (40-132) follow, including "A sheaf of arrow prayers."

Part III has "Prayers of Christians: Personal and Occasional" gathered into 13 sections, following the content of the Lord's Prayer, from "Our Father" — Dependence," through "As we forgive" — Relationships," to "For ever and ever" — Death and eternity; the Virgin, martyrs and saints; Blessings" (133-576).

"Prayers of the Church," part IV, groups prayers according to the Creed, as part III does with the "Our Father" (577-789). "Prayer as Listening" is part V (790-819).

"Prayer from Other Traditions," part VI (820-1086), draws on the spiritual riches of Judaism, India, Buddhism, China, Zoroastrianism, Greece and Rome, Islam, the Baha'is, Africa, the American Indian, and Japan.

"Prayers towards the Unity of Mankind," part VII, 1087-1120, conclude this opulent, useful collection of prayers.

The source of each prayer is clearly marked so that the scrupulous can avoid non-Christian prayers, if such is desired.

*The Oxford Book of Prayer* is rather like the buffet at the Mauna Kea: elegant, comprehensive, satisfying — splendid food for the spirit, soul and mind as well.

A more modest collection (234 prayers) is Dr. Shepherd's *A Companion of Prayer for Daily Living*, with a very helpful and illuminating short introduction "The Meaning and Practice of Prayer."

Dr. Shepherd, the Episcopal Church's greatest liturgical scholar and himself a man of prayer, places the best he knows in a book beautifully organized and suitable for back pocket or purse.

There are eight sections to the *Companion*: Prayer at all Times and in all Places, Daily Prayer and Praise, Daily Life and Work, Personal Gifts and Graces, Intercessions, the Christian Year, Times of Renewal, and The Holy Eucharist.

Prayer 134 would serve quite well for Sunday school students, teachers and staff.

—JPE.



# MOKULEIA OCTOBER TOTAL \$2.82 MILLION

Spurred on by the \$250,000 Kresge challenge grant and determined to bring that important mainland money to the Camp Mokuleia reconstruction project for the benefit of all Hawaii, faithful volunteers in the church and in the community continue to bring in gifts and pledges.

In October, the Summer Camp Parents portion of the campaign began. Led by a group of parents including, Suzanne Maurer, Elspeth Kerr, Fay Myers, Fred Devereux, Michael Pietsch, Paula Myers, Judy Pietsch, Beth Devereux, Ann Ganote, and assisted by Dr. Brysson Greenwell, Lorna Larsen Kloninger, Tanya Alston, Gayle Lee, Norman Lee, Sally Cole, the parents will execute a combination personal calling and mail campaign. The Honorary Chairman for the Summer Camp Parents effort is Mrs. Neal S. Blaisdell, an ardent supporter of Camp Mokuleia.

Even before their solicitation process began, the Summer Camp Parents re-

ceived their first pledge of \$1,000. Its exciting to begin to add the pledges of this whole new Camp constituency. This pledge, added to others received since our last *Chronicle* report, brings the new total for the Campaign to date (Oct. 1) to \$2,823,483. The Campaign in the Diocese as of the same date stood at \$786,690 and climbing.

We are happy to welcome All Saint's Church on Kauai to the "Over the Top" gang. Special thanks to the Rev. Bob Walden, Rector and Victor Punua, Sr., Chair. There are several other congregations that are very close to reaching their challenges.

Major Gifts solicitors continue to be in the field and 23 Special Gifts solicitors continue to make calls. Special Gift solicitors were to report their progress at a meeting on October 7.

Foundation solicitation continues through the Campaign Office.

—By our Camp Mokuleia Campaign correspondent.

## IN MEMORIAM

### FR. EUGENE LEE HARSHMAN

Fr. Gene Harshman, Rector of Calvary Church, Kaneohe, from 1971-1977, died September 25, three days short of his 56th birthday, following heart bypass surgery.

On leaving Hawaii, Fr. Harshman served as Rector of the Church of the Holy Comforter, Bloomfield, Colorado, until his death. During his ministry, he also served churches in California, Washington State, and Indiana. While at Calvary he led the charismatic renewal movement within Hawaii's Episcopal Church. During the interim between the death of Bishop Hanchett and the election of Bishop Browning, Fr. Harshman served as President of the Standing Committee and guided the Diocese as a member of the interim management team.

Fr. Harshman was born in Wisconsin and educated in California. He was graduated from the Long Beach State College (B.A. 1953) and the Church Divinity School of the Pacific, Berkeley (M.Div. 1958).

He is survived by his wife Sondra and five children, three by a former marriage.

### MARK WILLIAM EDWARDS

Mark William Edwards, 26, son of the Rev. J. Sargeant Edwards and his wife Helen, was killed in an auto accident Saturday, October 4, in Oregon.

He was a Coast Guardsman at the Umpqua River U.S. Coast Guard Station, Winchester Bay, Oregon.

Memorial services were held Saturday, October 11, at Calvary Episcopal Church, Kaneohe, where his father serves as Rector. The ashes were scattered at sea in a private, family service.

Mark William Edwards is survived by his parents, two brothers, Paul S. and Stephen G.; his uncle, Gordon; and his grandfather, Justin S. Edwards.

### THE REV. FUJIO GEORGE HAYASHI

The Rev. Fujio George Hayashi, Vicar of Good Samaritan, Palolo, from 1961-1970, died Saturday, August 30, in Chicago, Illinois, as the result of a severe asthma attack. He was 67.

Fr. Hayashi was born in Los Angeles and educated at Roosevelt University in Chicago (B.A. 1954) and at the Virginia Theological School in Alexandria (M. Div. 1957). He served as Vicar of St. James', Kamuela, from 1957 to 1961. And on leaving Hawaii, he became the Priest-in-charge of the Japanese congregation of St. Peter's, Chicago.

The funeral homily was preached by his nephew, the Rev. John E. Kitagawa, Canon for Mission Development of the Diocese of Maryland. "In life, Fujio George Hayashi loved his Lord and tried to serve his Church faithfully and obediently. When I was much younger, I once asked him why he wore his clerical collar so much. He said it was because one never knew when someone might need help," Canon Kitagawa reported.



Fr. George Hayashi with the late Bishop Kennedy.

## A WORD FROM THE BISHOP-ELECT

Dear Sisters and Brothers,

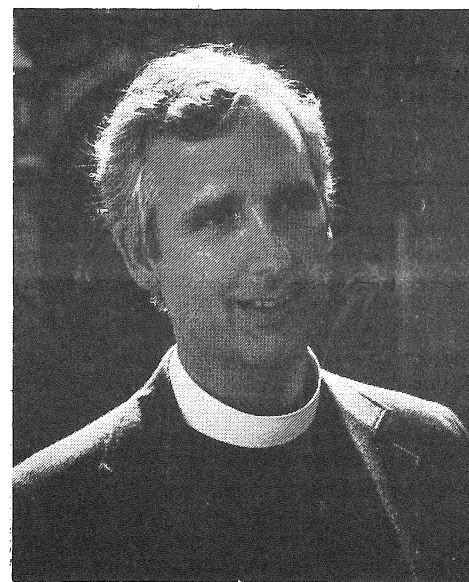
The first weeks of sitting at the Bishop's desk have been a remarkable revelation to me. Some moments have been overwhelming as I try to find handles on all the past history and on so many new names and places. Other moments have been exciting as I have learned about people and programs that are carrying out remarkable ministry in this Diocese. A few moments have given me that glimmer of personal satisfaction which says that I too will be able to join you in offering my talents in God's work here. The important revelation is that God's powerful hand is at work — has been in the past, and surely will guide us in the future. Of that I am confident.

Before I left New Hampshire, I put my efforts behind the Camp Mokuleia Fund Drive, making a pledge for our family and writing letters to urge the congregations to make a final push to fulfill their goals. I have met with the Committee since arriving, and I realize that we are on the threshold of a tremendous accomplishment. In fact, already the Diocese has responded in wonderful ways. A spirit of generosity and good will be obviously here, in

spite of the sacrifice which this kind of asking always means. My personal hope is that the congregations, which have not met their goals, will try hard to do so and join in what is going to be an outstanding achievement. The Kresge Foundation Grant of \$250,000 is waiting in the wings for the last pledges to come in and to show the commitment of the Diocese to this project. I am extremely pleased with the work and generosity that has already taken place, and I look for a grand finale in these last months.

Another program that has impressed me is the work of Kalihi-Palama Immigrant Service Center (KPISC) at St. Elizabeth's Church. I met with the Director, Bettye Harris, and her staff the other day. Sitting around the table were people who represented over a dozen languages and dialects from around the Pacific rim. I realized that among them I was probably the least talented, in the special work of helping immigrants and refugees establish themselves in Hawaii and the American culture. Here was a collection of people, who in themselves, witnessed to the miracle of Christian community and American diversity — and beyond that were the 800 or more families they help each month. Christianity has its roots in what it means to be a refugee. Jesus was only a few days old when his family fled to Egypt. Our caring for those who are strangers in a strange land has been strong ever since. KPISC can use volunteers; they can use funds to keep their program going. Call Bettye Harris if you can help (845-3918).

I suspect next week I will be impressed by more and more that happens in this Diocese. That is part of the joy I know for coming to be among you. For that I thank God and all of you.



Bishop-elect Donald P. Hart. *Honolulu Advertiser* photo by Ron Jett, with permission.

Donald P. Hart  
Bishop-elect

## Hawaiian Church Chronicle

ISSN 0274-7154

Serving the Episcopal Church in Hawaii and continuing *The Anglican Church Chronicle* (1882-1910).

Sent to each Episcopal household on parish lists submitted by each church and to friends of the Episcopal Church in Hawaii.

Copies this Issue: 7,626.

Published: Nine times in 1986 — February, March, April, June, August, October (Convention Issue), November, and December, with a special edition in May.

Deadline: First of each month of publication listed above.  
Suggested annual donation: \$4.00.

Publication Office: Episcopal Church in Hawaii, 229 Queen Emma Square, Honolulu, Hawaii 96813. Telephone: (808) 536-7776.

Publisher: The Rev. Donald P. Hart, Bishop-elect.

Editor: The Rev. John Paul Engelcke. Telephone: (808) 536-7776, ext. 8.

Editorial Board: Paul Sackett, Chair; Sumner Howard; Fr. Timoteo Quintero; G. Keith Ware — Communications Department, Diocesan Council.

Circulation Manager & Assistant to the Editor: Ms. Mary MacIntosh, Publication Office, (808) 536-7776 ext. 2.

Printed by: Hawaii Hochi, Ltd., 917 Kokea St., Honolulu, HI 96817.

Second Class Postage paid at Honolulu, Hawaii.

Postmaster: Send Form 3579 to the *Hawaiian Church Chronicle*, Queen Emma Square, Honolulu, Hawaii 96813.

# NOMINATIONS 1986

The Diocesan Convention annually elects members to the Standing Committee, the Diocesan Council, and the Chapter of St. Andrew's Cathedral.

At press-time the following nominations had been received, and more were solicited by the Committee on Nominations (Betty Caskey and Relda Loomis, Co-Chairs).

## STANDING COMMITTEE

"When a Bishop is in charge of the Diocese, the Committee shall serve as the Bishop's Council of Advice. If there be no Bishop in charge of the Diocese, then the Committee shall be the Ecclesiastical Authority in all cases, except such as are otherwise provided for by General Convention or diocesan Convention."

To be elected: one clergy and one lay person each for a four year term.

**THE REV. DAVID K. KENNEDY**  
Queen Emma Chapel.

Church and Community Service Positions: 1) Vice President, Diocesan Council (acting Chair during period between Bishops; 2) Convenor, Interim Management Team (during period between Bishops); 3) Chapter Member (Diocesan representative), St. Andrew's Cathedral; 4) Member, Hawaii Kai Neighborhood Board.

I would like to continue to serve the Diocese in this new capacity since my terms on the Diocesan Council and Interim Management Team expire. My experience in numerous Diocesan positions over the years should enable me to be of value to the Standing Committee.

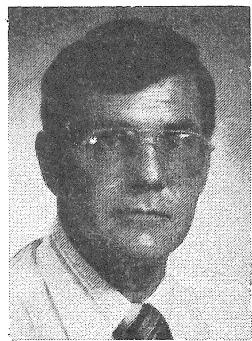
**BETTYE J. HARRIS**  
St. Christopher's.

Church and Community Service Positions: 1) Member, Executive Council, Episcopal Church; 2) Board Member, Presiding Bishops's Fund for World Relief; 3) Member, Coalition of Human Needs Commission of the Episcopal Church; 4) President, Hawaii Council of Churches.

I have been blessed not only with skills but a desire to serve my Church in acting and carrying out the work that the Lord Commanded us as Christians to do.

**CHANDLER W. ROWE, JR.**  
Emmanuel.

Church and Community Service Positions: 1) Delegate to Diocesan Convention 1974, 1985 (Workshop Facilitator), 1986; 2) Bishop's Warden, Emmanuel Church 1985, 1986; 3) Area Coordinator, Episcopal Expression Marriage Encounter, 1983-1986; 4) Head of Building and Construction Committee, Emmanuel Church.



Chandler W. Rowe, Jr.

Service as Bishop's Warden, Convention Delegate and leadership in Marriage Encounter has provided the inspiration to serve the Diocese as I seek continued opportunities for personal spiritual growth. I will dedicate time and energy required, and believe my communicative, organizational and managerial skills may be of value to the Diocese.

## DIOCESAN COUNCIL

The Diocesan Council exercises "all the powers of the Diocesan Convention between meetings thereof, implementing the directives and policies of that body, initiating and developing new work, but not acting in contravention of the expressed will of the Convention."

The Council also serves as the Church's Board of Directors.

To be elected: Two clergy and six lay persons, each for a three-year term.

**THE REV. CHARLES T. CRANE**  
Holy Nativity.

Church and Community Service Positions: 1) Standing Committee 1985; 2) Deputy to General Convention 1970, 1979; 3) Co-Chair, Mokuleia Capital Campaign, 1985-86; 4) Author, *A Pastor's Prayers, Kalaniana'ole Katchism*, etc.

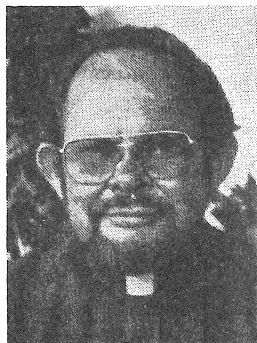


The Rev. Charles T. Crane

Over the 29 years in which I have served in the Diocese of Hawaii, I have been on virtually every Board and/or Commission in the Diocese. Bishop Hart will need to be assisted by people familiar with the Diocese and committed to its mission. Also, having played a significant role in the Mokuleia Capital Campaign, I am desirous of seeing the project of construction through to a satisfactory conclusion.

**THE REV. JAMES P. ERON**  
Christ Memorial.

Church and Community Service Positions: 1) Diocesan Spiritual Director, Cursillos in Christianity; 2) Charter Member, Diocesan Board of Ministry to the Aging; 3) President, Kauai Interfaith Council; 4) Founder, Kauai North Shore Ministerial Association.



The Rev. James P. Eron

From my 27 1/2 years as a Priest, both Roman Catholic and Episcopal, I feel I have a great deal to offer to the

Diocese in terms of spiritual growth, administrative ability and leadership. At this time of change and growth in our diocese, I would like to be one of the agents.

**PETER A. CARSON**  
Emmanuel

Church and Community Service Positions: 1) Bishop Committee, Emmanuel; 2) Stewardship Chairman, Emmanuel; 3) Camp Mokuleia Canvas-



Peter A. Carson

ser; 4) Episcopal Marriage Encounter Board Member.

I would like the opportunity to do God's work. I can offer a variety of experiences and capabilities that will enhance the effectiveness of the Diocesan Council.

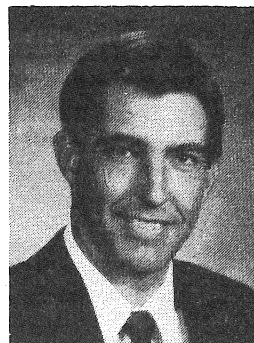
**WILLIAM FOLTZ**  
St. Mark's.

Church and Community Service Positions: 1) Diocesan Council; 2) Senior Warden, St. Mark's; 3) Commission on Diaconate; 4) VIM & 2 Responses to Bishop's Address

I wish to insure the representation of smaller parishes and some of the viewpoints which might be less popular than those prevailing in the Diocese. Am also desirous of seeing that St. Mark's becomes more involved in the Diocese through my participation.

**GARY G. GRIMMER**  
St. Christopher's.

Church and Community Service Positions: 1) Jr. Warden/Vestry, St. Christopher, Kailua; 2) Vestry, Holy Apostles', Hilo; 3) District Chairman, Republican Party, West Hawaii, Big Island; 4) President, West Hawaii Bar Association, Big Island.



Gary G. Grimmer

I want to serve because I believe the most effective way to help people in our community is through our Church outreach. I would like to contribute to this by serving on the Council.

**GORDON L. JOHNSON**  
Holy Nativity.

Church and Community Service Positions: 1) Vestry, Holy Nativity (term expires Feb. 87); 2) Chapter, St. Andrew's (terms expires 87); 3) Editor, *Keeping Watch* (Holy Nativity); 4) Volunteer production assistant at KHPR and KHET.

## CHRONICLE FUNDS

### APPEAL

Printing costs and postal fees have risen over the years, so the help of *Chronicle* readers is asked. If you are able to do so, please consider defraying *Chronicle* costs by sending in the \$4 "suggested annual donation" or more.

Additional donations are most welcome. Indeed, there is a "Hawaiian Church Chronicle Fund" within the Diocesan Endowment for those wishing by larger donations to endow Diocesan communications. This fund was established January 1, 1938, and now totals just over \$7,000. The terms of the Fund are: "The principal may not be spent. The interest income is to be used for the expense of publishing the *Hawaiian Church Chronicle*."

Donations or not, the *Chronicle* will continue to be sent to all members of the Episcopal Church in Hawaii on parish lists submitted by the several churches and to friends of the Diocese of Hawaii both here and abroad. Donations are welcomed, but not a condition of receiving the *Chronicle*.



Gordon L. Johnson

Having served on Chapter of St. Andrew's, I see the need for greater Diocesan unity. I feel that my experience on the Mainland and here in Hawaii would be beneficial in helping our new Bishop fulfill his job.

**DORA L. KRAUL**  
St. Clement's.

Church and Community Service Positions: 1) Past President, ECW; 2) Senior Warden and Vestryman, St. Clement's; 3) Chairman, Companion Diocese Relationship Committee, 1981-84; 4) Deputy to General Convention and Triennial.

It has been my privilege to serve the church both at the parish and diocesan levels. Although actively involved at St. Clement's, my past experience on the Diocesan Council has enhanced my desire to do more for my church by participating in the exciting "new beginning" of our Episcopate.

**GEORGE S. LOCKWOOD**  
Christ Church.

Church and Community Service Positions: 1) General Convention Deputy (Dio. of El Camino Real 85, 82; Calif 79, 76); 2) Standing Committees (Dio. of El Camino Real 80-85, Calif 74-83, Chairman 78-83); Diocesan Council (Dio. of California 70-74, President 72-74).

(Continued on p. 5)





George S. Lockwood

The new direction of our Diocese under Bishop Hart will be greatly influenced and carried out by the Diocesan Council. Through this body I wish to continue to contribute to the advancement of the mission of the Church, utilizing my varied background at the National, Diocesan, and parish levels.

#### RELDA L. LOOMIS Holy Nativity.

Church and Community Service Positions: 1) Vestry, Holy Nativity Church; 2) Jr. Warden, Holy Nativity Church; 3) President, Kalihi Palama Immigrant Service Center; 4) Facilities Comm. YWCA.

Having been an active member of Holy Nativity Church for over 16 years, active with the woman's work, now on the Vestry and Jr. Warden and also on the development committee of the new Camp at Mokuleia, plus my community involvement, I would very much like to serve God and my church as a committed member of the Diocesan Council.

#### MAURICE V. PAGELLA St. Christopher's.

Church and Community Service Positions: 1) St. Christopher's Vestry, 1984-6; 2) Chairman, St. Christopher's Renovation Committee, 1984-6; 3) Member, Diocesan Finance Committee, 1986; 4) Convention Delegate, 1985-6.

My first motive for serving is that I believe the more I am involved, the more meaningful my religion is for me. Secondly, I feel that with my past experience in the Diocese and my professional skills, I can make a contribution to the growth of the Diocese.

#### NATHANIEL R. POTTER St. Andrew's.

Church and Community Service Positions: 1) Senior Warden, St. Andrew's Cathedral for 15 years; 2) Standing Committee; 3) Diocesan Council; 4) Election Process Committee.

I am a firm believer in offering the opportunity to serve to new faces — those who have not had that privilege before. I am not a new face. However, in this time of transition in our Diocese I have enjoyed during former periods of transition may prove helpful.

#### HATSUNE A. SEKIMURA Good Samaritan.

Church and Community Service Positions: 1) Parish level, served as Clerk and Senior Warden of Bishop's Committee; 2) Diocesan level ECW Board and member of ECW Nominating Committee; 3) National level, Episcopal Asia/Pacific Ministry, former Hawaii EAST Chairperson, representative to National Convocation; 4) Community, long-time volunteer Kuakini Medical Center, American Cancer Society, etc.



Hatsune A. Sekimura

As a retired State employee and former Council Members. I would like to give my time and talent to my beloved Diocese. I have led many years of progressively responsible positions at the parish, Diocesan and National levels. I am also experienced in working with various ethnic and women's groups.

#### GEORGE W. WIGGINS Emmanuel.

Church and Community Service Positions: 1) Chapter member at St. Andrew's Cathedral (2 terms); 2) Past Senior Warden/ Present Lay Reader, Emmanuel Church; 3) Member of Community Ministries/Committee, St. Andrew's; and Urban and Regional Ministries, St. Elizabeth's; 4) Coordinator for Board of Ministry on Aging (BOMA).



George W. Wiggins

I wish to serve on the Diocesan Council for the glory of God and to enhance His Kingdom. Second, to increase my knowledge of the Church from Council Members and third, to bring my own expertise to this body.

#### CHAPTER OF ST. ANDREW'S CATHEDRAL

The Chapter is the governing body of the Cathedral, corresponding to the Vestry and to the Bishop's Committee in the several churches.

To be elected; One clergy and one lay person, each for a two-year term.

#### THE REV. GERALD G. GIFFORD II St. Elizabeth's.

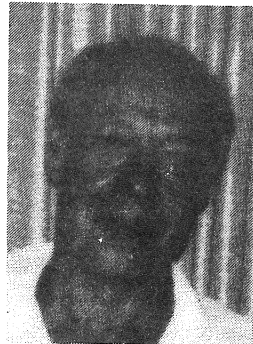
Church and Community Service Positions: 1) Member of Commission on Ministry; 2) Chair of Commission on Urban and Regional Ministry; 3) Member of Commission on Peace and Justice; 4) Chair of Oahu Clericus 1986-1987.

As a member of Chapter I can share my knowledge and experience as an urban priest in central Honolulu and also of my years as Chaplain of Iolani, and Chair of the Religion Dept., and of my years as Vicar of St. Stephen's in Wahiawa. I was confirmed at the Cathedral in 1944.

#### CLIVE F. KIENTLE Emmanuel.

Church and Community Service Positions: 1) Director, Emmanuel: A.I.A. Dr. Chapter; 2) Vestry, St. Barnabas'

Church, Portland; 3) Layreader, Emmanuel Church, Kailua; 4) Bldgs. Committee, Kukilakila Townhouses.



Clive F. Kientle

Thirty-two years as a practicing Architect have given me specialized experience with programming, planning and building projects. I hope this would be useful to the Diocese. I am accustomed to acting as a team member in accomplishing goals and I am use to working with committees.

## SYNOD

The 59th Synod of the Province of the Pacific (Province 8) concluded its 1986 business with approximately 285 church leaders from the 9 Western states in attendance in early September in Reno.

The theme of Synod was "Small Congregations: Crucible of Christianity."

Among the other concerns of Synod were aging; the plight of agriculture; AIDS; Hispanic, Asian, Pacific Island ministry development (HAPI-MD); American Indian concerns; Ministry; and World peace, Arthur McEwen reported in *The Mission Bell* of the Diocese of El Camino Real (Central Coast California).

Currently HAPI-MD is in a research and development phase, this study to conclude this November. Specific decisions on implementation are to be made then. Sandra J. Bright, wife of Fr. John Bright, former Dean of St. Andrew's Cathedral, is Executive Director of HAPI-MD.

In Synod elections, Archdeacon Lincoln Eng of Oregon was elected to a two-year term as the Province's clerical representative to the Executive Council. And the Hon. Deborah Bail of Idaho was elected to a three-year term on the Board of Trustees of the Church Divinity School of the Pacific.

Synod legislation involved only routine housekeeping matters, reported Paul Lazarus in a special to the *Chronicle*.

The 60th Synod is scheduled for the first week of September 1987 in Monterey, California.

Attending Synod from Hawaii were Bishop-elect Donald Hart, the Rev. Ed Bonsey, the Rev. Lynette Schaefer, Tom Van Culin, Alice Anne Bell, Nita Hogue, Jack Lockwood, and First Alternate Annette Jim.

## Personally Speaking

My thanks to the many *Chronicle* readers who wished me well during recent bypass surgery and convalescence.

The operation is not without its dangers, but is not to be feared. Indeed, many find themselves quite rejuvenated by it. I, however, am of such an age that rejuvenation would not only be unseemly but dangerous.

Readers of the *Chronicle* will be happy to know that in the course of the last year, articles about the Church in Hawaii have appeared in the following national Episcopal periodicals:

- *The Living Church*, a distinguished weekly of news and comment;
- *The Episcopalian*, the church's "independently edited, officially sponsored monthly";
- *The Anglican Digest*, reprintings from many sources (including the *Chronicle*), published quarterly; and
- *Jubilee*, a quarterly devoted to "social concerns and the Episcopal Church."

These articles were generally those one would expect: Bishop Browning's election and installation as Presiding Bishop, the candidates chosen to succeed him as Bishop of Hawaii, and the election of the Rev. Donald Hart.

Other stories were: The Kalihi-Palama Immigrant Service Center (*Jubilee*), and the Preface to the Book of Common Prayer by King Kamehameha IV, which *The Anglican Digest* reprinted in its Transfiguration, or Fall, 1986 issue.

And the *Iolani Bulletin* was gracious enough to reprint the *Chronicle's* obituary for Bishop Kennedy.

In these ways, the *Chronicle* reached a still wider readership.

Speaking of readership, I hope you find these figures of interest: 7,626 *Chronicles* were mailed in September, of which 372 went to mainland readers and 62 to foreign addresses.

Special thanks are due Mary MacIntosh of the Bishop's Office and Bob Miller of St. Andrew's Cathedral for seeing the last issue of the *Chronicle* to and through the press, while the editor "enjoyed" the hospitality of The Queen's Medical Center.

And, in conclusion, many thanks and a fond aloha are due to two members of the Communications Department whose Diocesan Council terms expire this year: Paul Sackett of St. James', Kamuela, who served as Communications Department Chair; and Sumner Howard of the Church of the Holy Nativity, who also served for a time as Interim Editor of the *Chronicle*. Many thanks and Godspeed.

—The Editor



St. George's EWC booth at the St. Andrew's Cathedral Market.

# GLIMPSES of QUEEN EMMA, KAMEHAMEHA IV

A small collection of letters by Queen Emma and others illuminating the early days of the Episcopal Church in Hawaii is nearly unknown to those who love the Queen, King Kamehameha IV, and Victorian Hawaii.

These letters are in the possession of the grand-daughter of Bishop Thomas Nettleship Staley, Mrs. Katharine Shirley Thompson. And she has put all in her debt by publishing them privately, for the sake of her family and others, under the title *Portrait of a Missionary Bishop (Grimsby, Ontario; December 1963)*.

This collection includes letters by Bishop Staley and his wife Katharine ("Kate"), the then Archbishop of Canterbury, Lady Jane Franklin, Charles Darwin, Gladstone, the Hon. David Kalakaua (later King), King Kamehameha V, and five are by Queen Emma.

## II.

In a letter to his sister Gracie, Bishop Staley gives us this view of the King and the Queen. He writes from Hina Hale, Prince Lot's home on the palace grounds, in November 1862:

How I longed for you, Gracie, 3 nights ago when sitting looking at the countless stars and listening to the songs of the native Chieftains who came beneath our verandahs and serenaded us.

They are noble fellows. The King and the Queen brought them in at 8 o'clock, and we spent a couple of hours in teaching them Christmas hymns and carols.

One Chiefess came with the Queen — an enormous and dignified dame. The Chiefs are so tall and handsome, like noble, dark Spaniards. But the King is superb, above all so expressive of face. (He) has never yet been properly portrayed, and the photographs are mere caricatures. . .

He is a true gentleman. One day I chanced to say we liked fish, and since then he often sends dishes of fish from his private ponds — some kinds are what I could rarely meet with in the market. (pp. 11, 12).

Later in time, but in that same letter:

The Queen has just sent in a large dish of strawberries from her garden, and after we had enjoyed them, I returned to the verandah adjoining my dressing room, when I saw her graceful figure enter the tomb of her lost boy.

She spends many hours there. I see her enter the building sometimes soon after 6 in the morning as I am dressing.

She is writing today to Lady Franklin who loved the little Prince, and she writes sitting at his side. The little Prince is on a table enclosed in a coffin of beautifully polished koa wood, after being emblamed, with a lofty kahili of superb feathers at the head. (p. 13).

## III.

Four months later the Bishop writes his mother and sisters, and we see Emma, even in the midst of her grief, working to save other children:

We have formed a district visiting society, much wanted. It is so great a waste of life in babies. Five out of six die here, of neglect, and it is telling on the number of the population. We have 20 ladies. Kate goes with the Princess Victoria, the King's sister. Every lady visitor is accompanied by a foreign lady.

The Queen, with her footman (John) after her, goes into the lowest, most infamous

neighbourhood to save young girls, restore prostitutes, and carry health and consolation to the dwellings of the sick. She is indeed beloved. (p. 19).

## IV.

On Easter morning (April 5, 1863), the Bishop and his wife lost their four-year-old son Ernest in a tragic replay of the loss of the Prince of Hawaii, and the King and the Queen offered what comfort they could:

. . . Through the window I saw a dark figure followed by an attendant moving about the gardens of the Palace and cutting flowers. And I knew from whom these flowers were and who had been gathering them, when the noble Queen came in and brought her wreath of fresh roses and laid them on our child. . .

The royal family and other gentlemen are sending their carriage(s) and joining the cortege. A gloom has been flung over all Honolulu, and every class of whatever religious or national part has expressed to us the deepest sympathy. . .

What has made the public feel to be so painful is in that in every particular, it is a repetition of the circumstances of the young Prince. Both had, it is supposed, eaten raw tamarinds when playing under the trees. It brought on severe sickness, then effusion of the brain, insensibility, and ultimately death.

Both were the same age exactly, 4 years and 2 months, and — strange to say — Ernest was the King's favorite. "Papa," he would say, "I do love that King." And His Majesty would take him on his knee and give him oranges to his delight.

You may imagine how their Majesties must feel it to be the reopening of their own wound afresh. (pp. 23, 24).

## V.

That November the King himself died. Mrs. Staley writes in a letter dated December 6, 1863:

The King had often had attacks of dysentery and on Saturday was advised not to appear at the public reception as he seemed weak. I took Jessie, my clever Scotch maiden, to the Palace early to dress the Queen's magnificent black hair and to arrange her, for she had to appear alone, and was distrubed that the King could not be present. She did look lovely in rich white silk and black lace over, white feathers in her headdress.

On Sunday the King was better and seemed recovering, and at 9 on Monday the Bishop's horse was at the door and I had told



King Kamehameha IV 1834-1863

him I should drive down to see the Queen in the afternoon, when a soldier came in and said "Pilikai mei, Bihopa" — sad trouble, to come quick. We galloped off and found an awful, piteous scene in the King's bedroom — the Queen with frantic energy and hope, breathing her warm breath into her husband to revive him, believing he had swooned. Long she resisted the belief he could have left her so suddenly. All means were taken, and when I got there she was in calm, stunned despair. I stayed all day through the sad excitement of Tuesday when he lay in state. The scenes were heart rending all day long, people pouring in to see for the last time their loved King and father, and the wailing of the crowd outside the Palace, with the sobs and groans inside, made me feel sick and ill, and often made the Queen almost faint with woe. I stood by her all day and then the Bishop ordered me home, being afraid for my health, and knowing, I could not bear the horror of what he anticipated, when at night our King would be put into a leaden coffin. He concealed that it was so arranged and I left, he remaining, and sad it proved, for the Queen refused to part with the loved one — entreated, implored to be allowed to gaze on him one day more, and after agony which made men weep, the scene closed by her failing into a long insensibility and relaxing her firm grip. When she revived, never will the Bishop forget her look on seeing her cruel fate.

. . . Our late King will lie in state a month. The Queen never leaves the coffin night and day. She wept for 8 days, never ate, could not be induced to take more than a little orange or jelly. There is to be a grand funeral. (pp. 28), 29).

## VI.

In 1865 and 1866, Queen Emma was in Europe. The trip did her good. As the King wrote to Bishop Staley in September 1867:

I see Queen Emma almost daily. She is most cheerful, and she has been out twice to evening parties since I have been down this time. (p. 46).

## VII.

In 1868 volcanic eruptions had destroyed much and hurt many on the Island of Hawaii. In a letter to Mrs. Staley, Emma tells of her own and Liliuokalani's efforts to help (May 1868):

This evening Mrs. Dominis gives one of her concerts at the stone meeting house in aid of the distressed natives in Hawaii. . .

I have been begging of the people for the poor natives of Hawaii and got \$3,000.00 in 4 days. The Church offering last Sunday was for the same object and realized over \$100.00, the Archdeacon giving a most appropriate sermon in the morning of their suffering. (p. 47).

## VIII.

And the Queen kept the absent Bishop up on the state of the Episcopal Church and local gossip:

Honolulu  
Oct. 1868.  
My dear Bishop,  
The copy of your book, "Five Years Church Work in Hawaii" is the only one in town, and everyone is most eager to get the loan of it. This morning I sent it to the King for perusal. He read it diligently and within 3 hours it was returned with a note saying he "had no idea it had already reached here. The preface states very distinctly the object and purpose for which the book was written, a condensed and true story of the work done by the Mission in this country. I for one, hope that the book will tend to give a full knowledge of our Island affairs before

## KING KAMEHAMEHA IV, QUEEN EMMA & THE CALENDAR

The 1985 General Convention provisionally approved King Kamehameha IV and Queen Emma for admission to the Calendar of the Book of Common Prayer under the date November 28.

A second affirmative vote by the 1988 General Convention is needed before the King and the Queen are finally admitted to the BCP's Calendar and celebrated nationally by the Episcopal Church each November. At this time their Feast belongs only to the Diocese of Hawaii.

the English people and help him in raising friends and funds in aid of the Church and the Cathedral in this city".

You will perceive that His Majesty is anything but uninterested in the prosperity of our Church. He is in good health, but his father is still in a helpless condition. Kalakaua has read your book and also the Wodehouses.

The Dean is working splendidly and is much liked, although people look upon him with distrust (the foreigners, of course) as to his high ritual, but as for the Hawaiian Church members, they are unanimous in approval and have been condemned as ignoramouses. The Dean has thoroughly roused the Church from its lethargy. He visits Church members and fills up all his time with classes for natives and foreigners, separate in the day and night, and shortly he will commence the *Hawaiian Confirmation and Communicant* classes. He visits the sick, and is getting on with Confession. I hear that a sermon of his, on absolution, has given great offense to the haoles (foreigners) and that Mr. Theo Davis late of Liverpool, in consequence has refused to give Mr. Williamson of Kona, the letters patent and deeds of conveyance to that bit of land Mr. Greenwell gave to the Church there. But this is only hearsay. If I find it is correct I will let you know. Do you know, the Dean is doing too much, I think, not giving himself resting time and looks fagged, but won't admit it. One day, he fell down in a swoon outside the Garden Gate of the Clergy House.

I quite agree with you, that you do not return till money is raised to complete the Cathedral.

The King's sister sends her aloha to you and Mrs. Staley. She has quite forsaken us and attends regularly the Kawaiahao meetings to show off her new dress and finery, which she has new every Sunday. But pray don't expose me in this bit of scandal.

My mother is well, and so am I. Remember me to all enquiring friends, and a kiss for Koholomoana. Aloha to Mrs. Staley and the children.

Yours faithfully,  
Kaleleonalani.

(pp. 48, 49).

## IX.

This is Emma's last letter in Katharine Shirley Thompson's collection. The Queen lived 17 more years. Of her Alfons Korn wrote in 1976,

In another country at some other time, under certain conditions, Emma might have achieved sainthood.

She has, and here, And she has done so by "heroic love of God and neighbor, triumph over personal catastrophe, and joy of life."



# DIOCESAN COUNCIL

The September meeting opened with the report of the Committee on the Location of New Missions, presented by Robert Reed, a part of the Congregational Development Department (Fr. Ed Bonsey, Chair). A new mission on the South Shore of Kauai has been recommended and steps are "being taken to survey the residents to learn if there is interest in an Episcopal Church being established in the area." The Council also requested counsel with the existing parishes and missions on Kauai.

The Rev. Gene Connell of the Planning Office of the City and County of Honolulu reported on the recommendations of the Committee concerning the location of new missions on the Island of Oahu. Population shifts toward Central Oahu now mean that by 2005 St. Timothy's, Aiea, would be in the midst of a population of 83,000 and St. Stephen's, Wahiawa, would then be serving a population of 140,000.

Also, with the development underway at Turtle Bay and on the North Shore generally and with the Campbell Estate due to dissolve within 20 to 30 years, acquisition of land in fee — if possible, that presently leased by Holy Cross, Malaekahana — is an essential for continued Episcopal Church ministry Waimea Bay to Kahana Bay.

There was discussion of purchasing land in Mililani which was referred to the Congregational Development Department for further study.

Pukalani on Maui is also being considered as the site for a new congregation. A feasibility study is to be made during the coming year, the Rev. Heather Mueller reported.

Ralph Kam, reporting for the Nature and Education Department, noted that there had been discussions on the program grant applications and that as soon as possible there will be a report on the Christian Education Survey done of the parish clergy in the Diocese.

For Communications, Paul Sackett reported that the masthead would be changed in the October *Chronicle* and an article appear concerning the need for contributions of \$4 per subscription. *Chronicles* are scheduled for October, November and December.

Reporting for Camps and Conferences, Fr. Robert Brown noted the excellent use of Camp Mokuleia in the past year, with a large number in the summer program, more coming from the Neighbor Islands than before, as well as campers from 13 states and a number of foreign countries. At this Council meeting, the total raised by the Camp Mokuleia Campaign was \$2,814,753.10.

On recommendation of the Finance Department (Richard Hagemeyer Chair), the following allocations of Venture in Mission funds were passed: clergy continuing education (\$6,725), Institute for Human Services (\$3,826), Koran ministries (\$1,040), Hospice, Island of Hawaii (\$3,000), and American Samoa (\$2,535).

The *Hawaiian Church Chronicle* is sent to each Episcopal household on parish lists submitted by each church. The suggested annual subscription donation is \$4.00. Those who would like to and can defray *Chronicle* costs are invited to contribute that amount or more to the *Hawaiian Church Chronicle*, Episcopal Church, Queen Emma Square, Honolulu, Hawaii 96813.

Permission was granted St. John's, Kula, to lease a portion of its property to the Keiki O'Kula Pre-School, Inc., for a period of less than one year.

A salary and benefits package for the Bishop-elect in the sum of \$98,700 per annum was approved.

A special task force was established "to study salary administration policies for the Diocese, and that this task force shall include lay and clergy employees of the Diocese."

Fr. Richard Rowe, reporting for the Standing Committee, indicated that licenses to officiate have been granted to Bishop George Masuda and Fr. Manuel Gunsli. Also, applications for ordination to the diaconate have been approved for Steven Bonsey, Imelda Padasdao, Charleen Crean, Marilyn Brown, and Kenneth Jackson.

The Standing Committee has approved the calls of two new Rectors: the Rev. Karen Swanson to Epiphany, Kaimuki, and Fr. James Furman to St. Peter's, Honolulu.

The Standing Committee and Diocesan Council having concurred, the authority of the Interim Management Team and the responsibility for the management of the Diocese was transferred to the Bishop-elect on arrival in the Diocese.

At its August meeting, the Diocesan Council:

- Heard of the visit by the Church in Society Department to the Kalihi-Palama Immigrant Service Center to learn more about their programs;

- Learned that the Nature and Education Department has a 50% return on its questionnaire to parochial clergy and had met with the Rev. Robert Banse concerning youth ministries.

- Discussed the addition of an 800 number to facilitate Diocesan communications and the publication of the minutes of the Diocesan Council in the *Chronicle*, both issues referred to the Interim Management Team.

- Noted that the church assessment group has met with the leadership of a number of congregations not over their challenges, with good response.

- Heard from Alice Anne Bell that the Special Gifts Solicitation for the Camp Mokuleia Campaign had begun calling on corporations and individuals for gifts of \$1,000 or \$25,000.

In reporting for the Congregational Development Department, Fr. Bonsey noted that

- Land acquisition policies for missions need and will receive further study,

- A Diocesan ethnic ministry policy to E.A.S.T. be formulated, and

- Endorsement be given Trinity By-the-Sea's request for parish status,

On recommendation of the Finance Department, Richard Hagemeyer reporting, the Council

- Approved liability insurance at approximately \$5,000 additional in the new contract with the architect for Camp Mokuleia,

- Approved a loan to St. Barnabas', Ewa Beach, to replace the roof and repair termite damage to the window frames (\$20,000),

- Approved the contract submitted by Christ Memorial Church, Kilauea, Kauai, for extensive modifications to their physical plant, subject to attorney's review; and

Jack Lockwood was recognized for his 10 years of service as Chancellor of the Diocese.



Theodore Ho of St. Peter's designed the above medallion in celebration of the Centennial of that Honolulu parish.

St. Peter's Church appears in both English and Chinese.

The inverted cross commemorates St. Peter's martyrdom: crucifixion upside down. The crossed keys are emblematic of St. Peter (Matthew 16:19).

Surrounding cross and keys are fire and flames, symbolic of religious fervor and martyrdom and emblems of the Holy Spirit.

502 copies of this medallion were struck in yellow metal by the Hawaii Pacific Mint. Diameter: 1½ inches.

Offered first to members of St. Peter's, remaining copies of this medallion will be available to the larger public if any are left. The reverse is blank.



Daniel Ching, Senior Warden, and his wife, Ethel. David Au photo.



Katherine and Christopher Kong, children of Rev. Kong Yin Tet and his wife, Chun Yuet Jin Kong (Popo Kong). Daid Au photo.

# THE CALENDAR

## October

- 15 Standing Committee, 12 noon.  
16 Finance Department, 4:15 p.m.  
17 Nurture & Education Department, 10 a.m.  
Congregational Development Department, 10 a.m.  
Church in Society Department, 10 a.m.  
Communications Department, 10:30 a.m.  
Camps & Conferences Department, 11 a.m.  
Diocesan Council, 12 noon.  
18 St. Luke the Evangelist.  
19 22nd Sunday after Pentecost. (Proper 24).  
Bishop-elect at St. Andrew's Cathedral.  
Pray for "England and the Province of York (one of the two provinces of the Church of England), John S. Habgood, Primate, with its 14 dioceses."  
23 St. James of Jerusalem.  
24-25 Ministries Training Program Weekend.  
26 23rd Sunday after Pentecost. (Proper 25).  
Bishop-elect at St. James, Kamuela.  
United Thank Offering Fall In-Gathering.  
"Remember the nations of South American and the Anglican Church of the Southern Cone of America (Iglesia Anglicana del Cono Sur de America), David Leake, Presiding Bishop, with its 5 diocese."  
28 St. Simon & St. Jude, Apostles.  
29 Province 8 Deployment Officers' Meeting.  
31 All Hallows' Eve (Hallowe'en).

## November

- 1 All Saints' Day.  
2 24th Sunday after Pentecost. (Proper 26).  
Bishop-elect at All Saints', Kapaa.  
"Remember the Province of the West Indies, G. Cuthbert M. Woodroffe, Archbishop, with its 8 dioceses."  
4 General election.  
7 Commission on Ministry, 12:30 p.m.  
8 Bazaar & Country Fair, Holy Cross, Malaekahana-Kahuku, 9:30 a.m. - 3 p.m.  
9 25th Sunday after Pentecost. (Proper 27).  
"Remember the Province of the Indian Ocean, French Chang-Him, Archbishop, with its 5 dioceses."  
11 Veterans Day Holiday.  
13 Tea Time, Queen Emma Bookroom, St. Andrew's Cathedral, with Kristen Zambucka, author of *Princess Kaiulani and Ano ano the Seed*, 2 p.m., with sandwiches, scones and tea following (Donation: \$3).  
14 Diocesan Convention, St. Andrew's Cathedral.  
Registration, 4-6:30 p.m.  
Opening service, 7 p.m.  
Bishop-elect's address.  
Organizing of Convention (to about 9 p.m.).  
15 Diocesan Convention, Hilton Hawaiian Village.

Delegate registration, 7:30 — 8 a.m.  
Session #1, 8-11:45 a.m.  
Noonday prayers.  
Luncheon.  
Session #2, 1:30-5 p.m.  
Convention banquet, Hilton Hawaiian Village, 6-10 p.m.

- 16 26th Sunday after Pentecost. (Proper 28).  
Convention Eucharist, St. Andrew's Cathedral, 10 a.m., with reception following.  
"Remember the Church of the Province of Central Africa, Khotso Makhulu, Archbishop, with its 10 dioceses."  
16-18 Clergy Conference, Sheraton Makaha, Sunday 5 p.m. through the 18th.  
19 Standing Committee, 12 noon.  
20 Finance Department, 4:15 p.m.  
21 Nurture & Education Department, 10 a.m.  
Congregational Development Department, 10 a.m.  
Church in Society Department, 10 a.m.  
Congregational Development Department, 10 a.m.  
Church in Society Department, 10 a.m.  
Communications Department, 10:30 a.m.  
Camps & Conferences Department, 11 a.m.  
Diocesan Council, 12 noon.  
21-22 Ministries Training Program Weekend, St. Clement's.  
23 Last Sunday after Pentecost. (Proper 29).  
Bishop-elect at Grace Church, Molokai.  
"Remember the Province of New England (Province 1 of the Episcopal Church, USA), the Rev. Gordon Stenning, President, with its 7 dioceses."  
27 Thanksgiving Day Holiday.  
28 Feast of King Kamehameha IV & Queen Emma.  
30 1st Sunday of Advent.  
Begin Sunday lectionary year A (BCP, p. 889).  
Consecration of the Rev. Donald P. Hart as the 9th Episcopal Bishop of Hawaii, St. Andrew's Cathedral, 3 p.m. Reception following.



The Rev. Virginia Brown Hunt, ordained Deacon at St. Augustine's, Kapaa, this June.



At Province 8 Synod (l. to r.): Annette Jim, Nita Hogue, Bishop-elect Hart, Diana Lockwood.

## CONVENTION '86 (from p. 1)

for Life (NOEL).

Resolution 3 is submitted by the Stewardship Committee of the Diocese, headed by Fr. Richard Rowe, Rector of St. Stephen's, Wahiawa.

"Resolved, that this 1986 annual Convention of the Diocese of Hawaii hereby adopts as Diocesan policy the recommendation of the 68th General Convention [urging every diocese and parish in this Church to 'give as much to others as we spend on ourselves'], and that this Diocese, in its operating and capital budgets, work towards the achievement of giving as much to others as we spend on ourselves; and be it further.

"Resolved, that this 1986 Convention of the Diocese of Hawaii urge every parish and mission in this Diocese, in the formulation of their own annual operating budgets and capital fund drives, [to] work toward giving as much to others as they spend on themselves."

The 1987 budget, as submitted to the budget area meetings throughout the Diocese, is balanced and totals \$966,000, an increase of \$33,500 over 1986.

Expenditures budgeted under Congregational Development (support of 17 missions and new mission work [\$10,000] total \$162,600, an increase of \$6,100.

Expenditures for Ministry to Church and Society total \$65,770 up \$895 and allocated to the Hawaii Council of Church (\$10,000), Ecumenical Commission (\$2,775), Kalihi-Palama Immigrant Service Center (\$10,000), Hawaii EAST (\$6,550), Urban and Regional Ministries (\$4,500), Campus Ministries (\$27,245), Companion Diocese (\$2,500), Ministry to the Aging (\$1,200), and New Ministries (\$1,000).

Expenditures for the Ministry of Nurture and Education total \$23,720 up \$1,120 and are allocated to Christian Education (\$6,900), Liturgical Commission (\$750), Evangelism (\$3,200, up \$1,200), Stewardship (\$1,500, down \$1,000), Youth Ministries (\$4,000, up \$2,200), Peace and Justice (\$1,370, down \$830), Program Travel (\$1,500, down \$1,500), St. Andrew's Priory Chaplain (\$2,000), Seabury Hall Chaplain (\$1,000).

Ministry of Campus and Conferences (Camp Mokuleia): \$15,000.

Ministry of Communications was budgeted at \$42,000 including the salary/benefits of the *Chronicle* editor (\$23,800), *Chronicle* production and distribution (\$17,200), and Media Programs and Miscellaneous (\$1,000), a 5% increase over the 1986 budget total.

Ministry to the Nation and the World: \$138,045 for National Church Quota (\$119,000), General Convention Assessment (\$6,811), Provincial Quota (\$3,234), General Convention Travel (\$6,000), Synod Travel (\$1,000), and Hispanic-Asian-and-Pacific-Islanders (H.A.P.I.) (\$2,000).

Ministry to Retirees: \$29,695 with

Group Life (\$1,300), Pension Supplements (\$24,675), and Rental Subsidies (\$3,720).

Ministry Development: \$56,000 with allocations as follow: Clergy Conferences (\$5,000), Lay Ministry Development (\$12,500, down \$10,000), Lay Ministry Development Staff (\$12,995, up over 1986 by that amount), Seminarian Assistance (\$3,000), Ministry Training Program (\$5,200, down \$16,400 from 1986), Ministry Training Staff (\$12,995, up that amount over 1986), and Commission on Ministry (\$4,310, up \$810).

The Ministry of the Episcopate is budgeted at \$98,700.

The Ministry of Administration is budgeted at \$178,225 with allocations as follow: Salaries and Benefits (\$173,225 up \$8,010), Lay Retirement Trust (\$3,000, down \$785), and Staff Continuing Education (\$2,000).

General Diocesan Expenses conclude the budget and total \$156,245 — Cathedral Maintenance (\$50,000), Office Expenses (\$36,000), Property Maintenance (\$15,000), Property Taxes (\$7,000), Investment Fees (\$15,000), Audit Expenses (\$7,000), Diocesan Convention (\$7,000, down \$2,000), Meeting Costs — Travel (\$15,000), Meeting Costs — Other (\$500), Mission Strategy Travel (\$1,000), Chancellor's Expenses (\$750), Officers and Directors Insurance (\$1,500), Miscellaneous (\$495).

Following the 1986 Diocesan Convention, the clergy and their spouses meet for the Clergy Conference, Sunday through Tuesday, November 16-18, at the Sheraton Makaha.

## ECW(from p. 1)

at KHET (PBS), will interview informally the Bishop-elect and his wife, Elizabeth, in the Tenney Theatre.

This annual meeting's closing session is scheduled for 2:45 p.m.

In her report, UTO Chairman Doris Fleming noted that ingatherings in the fall of 1985 and spring of 1986 totalled \$10,647.32. Four requests for 1986 UTO grants were received, of which three were submitted to the National UTO for consideration. \$8,000 has been awarded to UH Manoa's Episcopal campus ministry for work on the pavilion at Canterbury House. And \$45,000 has been granted St. John's By-the-Sea, Kahaluu, for facilities improvement.

The Church Periodical Club report (Cynthia Johnson, President) noted that 14 churches participated in CPC Sunday, the offering totalling \$1,380.62. CPC supports Christian ministry through the written word, including Christmas gifts for books to seminarians. The Church Army Society, St. Jude's Ranch for Children, the South American Missionary Society, the Diocese of Antigua, and the National Book Fund were among the beneficiaries last year.