

# HAWAIIAN CHURCH CHRONICLE

Volume 75 • Number 4

August 1984 • Page 1

## NATURAL BEAUTY PRESERVED BY CAMP MASTER PLAN

About 26 miles from St. Andrew's Cathedral, on a rise of Farrington Highway beyond the sugar plantation village of Waialua, the beautiful, blue Pacific Ocean comes into view.

One wonders, will Camp Mokuleia look any different since a visit in 1972?

The road winds down through pineapple and sugar cane fields (they are burning off cane over on the left) and then heads northwest along the white surf, the Hawaii Polo Club, more Mokuleia Homesteads property and then the wide, natural beach and stately hardwood trees of The Episcopal Church Camp, which we call Mokuleia.

The car slows down to a crawl. Are there any new buildings? Are the facilities any different from fourteen years ago when a son and daughter attended Mokuleia?

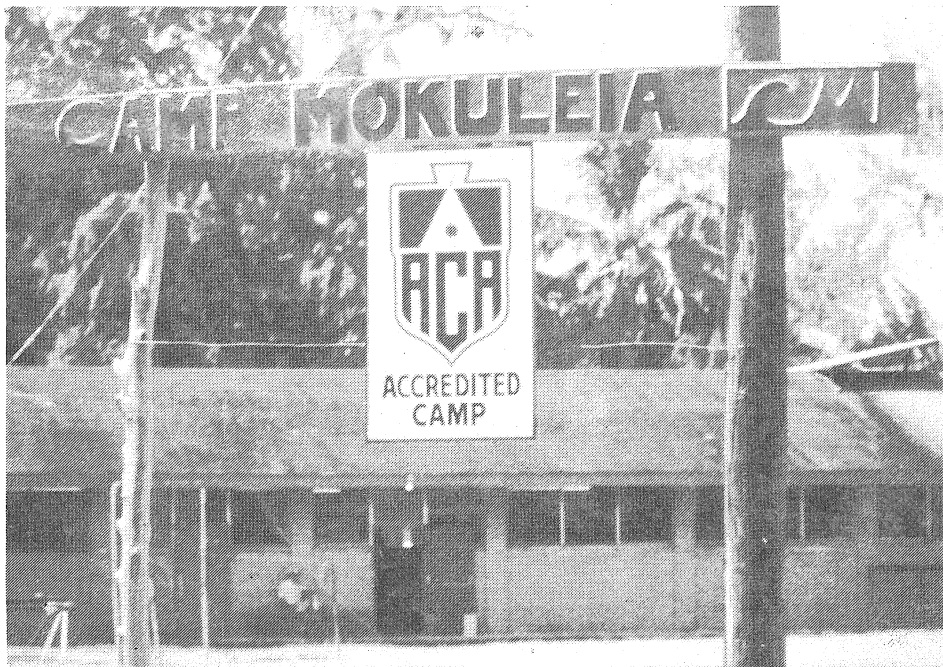
A complete walk around and through the property with the Camp Director, the Rev. Brian J. Grieves, revealed very few, if any, changes since 1972. Also noted was the herculean effort on the part of a few people to maintain worn-out camp facilities.

Brian, as Coordinator of the Master Plan Project for the Diocesan Camp Department and the special Long Range Task Force, pointed out that for over 12 years there have been discussions about the camp and whether to move it or not. By Diocesan Council action in 1982, it was decided to remain at Mokuleia and the \$130,000 retaining seawall was completed and dedicated in July of that year. Brian noted that the building of the badly-needed seawall "allowed us to focus our attention on the future of this beautiful property".

The 1983 Diocesan Convention last November directed "the (Long Range) Task Force to prepare a resolution for next year's Convention calling for a capital fund drive to be held in 1985 with the first phase of construction to begin in the same year". This same resolution at Convention directed the Task Force "to share the Master Plan with as much of the Diocese as possible prior to the next Convention . . . and to initiate schematic design work to enable the (governmental) permit process to proceed without delay . . .".

The budget for the planning and schematic activity is as follows:

Income:	
Venture In Mission	\$17,250
Other Church Sources	15,000
Trusts and Foundations	33,750
	\$66,000
Expenses:	
Master Planning	\$30,000
Schematic Design	36,000
	\$66,000



### NOTICE SPECIAL AREA MEETINGS TO DISCUSS THE

#### CAMP MOKULEIA MASTER PLAN

Hawaii	September 15 10:00 am	St. James Kamuela
Maui & Molokai	September 16 2:00 pm	Good Shepherd -Wailuku
Kauai	September 18 7:00 pm	St. Michael's -Lihue
Oahu	September 19 7:00 pm	St. Andrew's — Honolulu

Everyone in the Diocese and, especially, Delegates to 1984 Convention are urged to attend one of the above meetings.

The architectural firm of Ossipoff, Snyder and Rowland has been retained by the Task Force for this work.

Fr. Grieves reiterated the true dedication of the Camp Department, Jan Simonson-Chairperson and the Task Force, Relda Loomis and Thomas Van Culin-Co-Chairpersons.

Driving back along Farrington Highway and turning south away from the cool, Pacific wind, one noted with satisfaction that the children's camp, again, had 100% occupancy for the entire summer. Then one wondered whether the Adult Conference Center concept of the Master Plan might become a reality.

*The above is a composite of two visits to Camp Mokuleia in June and July. The possibilities for solid forward progress are numerous. It appears, however, that several major issues need to be addressed. . .mainly financial. It is up to the people of the Diocese to raise these questions and get their answers at the Special Area Meetings planned for mid-September on all islands. The schedule of venues and times is shown on the front page of this Chronicle.*

—Ed



Summer campers, with their counselors, receive their "Kapas" (cloths) for self-achievement.

## LAY LEADERS COMMENT ON MASTER PLAN

*We are pleased to present the personal comments and observations of several lay leaders of our Diocese who have also spent countless hours on the camp planning project.*

When Bishop Browning asked me to serve on the Camp Mokuleia Task Force, he confirmed that our function would be to focus on the camp's programs and its physical plant.

The Master Plan which is being submitted is intended to allow the Diocese to identify its own dreams, aspirations, expectations and commitment to the Camp.

I believe the process we followed and the plan that has been developed provides an appropriate challenge for both the Church and the community, as well.

Camp Mokuleia does serve the Church, but, in reality, it serves the entire community which includes the Church.

I have been constantly reminded of the extended role of the camp at every step we have taken in accomplishing our work over the past almost two years.

Camp Mokuleia belongs to all of us.

It is up to us now to weave the fabric of the camp for this and future generations.

Thomas VanCulin  
Task Force Co-Chairperson

\*\*\*\*\*

So many of us have done a lot of volunteer painting and repairing for quite a while now.

We started the "Friends of Mokuleia" in 1982 just for the purpose of raising volunteer funds and work crews.

Adults use the camp a lot, but I feel more people would use the camp if its facilities were in better condition.

I believe Brian Grieves (Camp Director) has done an outstanding job at Mokuleia. We now have to have a top capital fund drive to implement a Master Plan.

Somehow we've got to get the people of the Diocese involved. . . let them know it's their camp. . .that they are really part owners of a very special place in this Diocese.

Relda Loomis  
Task Force Co-Chairperson

\*\*\*\*\*

Being a member of Diocesan Council and being a member and then chairman of the Camp Department has been a very rewarding and growing experience for me.

There have been so many things going on with the camp. . .not only the present problems and growth, but future planning.

*Continued on Page 4, Column 1*

# Hawaiian Church Chronicle

ISSN 0274-7154

Serving the Episcopal Church in Hawaii (Continuing *The Anglican Church Chronicle: 1882-1910*).  
**Published:** Eight times yearly—February, March, April, June, August, September, October (Convention Issue) and December.  
**Deadline:** 15th of month preceeding publication months. Black/white photos preferred.

**Annual subscription rate:** \$4.00.  
**Publisher:** The Rt. Rev. Edmond Lee Browning, Bishop.  
**Publication Office:** Episcopal Church in Hawaii, Queen Emma Square, Honolulu, Hawaii 96813, 808/536-7776.  
**Interim Editor:** Sumner Howard, 176 Nawiliwili St., Honolulu, HI. 96825—808/395-5211.

**Editorial Board:** Dept. of the Diocese—W.R. Chillingworth, Chairman; Ernest Uno; Co-op: The Rev. Morley E. Frech, Jr., Trinity-Kihei, Maui and Marilyn Brown, St. Christopher's.  
**Second Class Postage:** Paid at Honolulu, Hawaii.  
**Postmaster:** Send Form 3579 to The *Hawaiian Church Chronicle*, Queen Emma Square, Honolulu, Hawaii 96813.

## EPISCOPAL CHURCHWOMEN

**MAH JONG, ANYONE?**  
**GAME DAY**, an annual "happening" of the Episcopal Churchwomen of the Diocese, is coming **SEPTEMBER 20**, and it promises to be better than ever. Women of all ages (men too) are invited to come and play bridge, rummy, Mah Jong, Scrabble - whatever you fancy. Bring the game of your choice and bring friends or make friends when you arrive.

There will be table prizes and door prizes and a delicious lunch. And \$5 buys it all!  
Game Day will be held in the Von Holt Room of St. Andrew's Cathedral on September 20, and you can start playing at 9:30 A.M. Call Marge Jared, 533-2156, for reservations or buy your tickets at the door. All proceeds will go towards travel costs to send our delegates to the ECW Triennial Convention in 1985.  
Remember . . . bring your games and cards and join us for a day of fun and fellowship.

—by Jean Welter

## BOOK STALL NEWS

The Book Stall has received many new books in plenty of time for holiday gift giving.  
As the last quarter of the year gets under way, we have new calendars for the church year, some that start in September 1984, and some that begin in January 1985.

- Available now:
- The Liturgical Desk Calendar - \$6.98
  - The Parish Wall Calendar - \$5.50
  - The Pocket Diary - \$5.50
  - The Christian Planning Calendar - \$5.50
  - The Liturgical Pocket Secretary - \$2.25
- Of Clergy interest:
- Lectionary Texts - Year B (Pulpit Edition) - \$12.95
  - Lectionary Texts - Year B (Pew Edition) - \$4.75
  - Introducing the Lessons of the Church year,
  - Frederick Borsch - \$8.95
  - Episcopal Eucharistic Lectionary RSV - \$10.50

- New Arrival Book Titles:
- Eerdman's Book of Famous Prayers - \$12.95
  - Stories of Our Favorite Hymns - \$10.95
  - Living the Bad Days - Why They Come and
  - How to Survive, by James Allen Sparks - \$8.95
  - Compassion, A Reflection on the Christian
  - Life, by D.P. McNeill, D.A. Morrison, &
  - Henri J.M. Nouwen - \$5.95
  - Encourage Me, Caring Words for Heavy Hearts,
  - by Charles Swindoll - \$6.95
  - For Those That Hurt, by Chuck Swindoll - \$4.50
  - plus many other new titles.

We will take special orders for specific book titles at any time. Many are made by phone — at 536-7776. We are beginning to fill in our Children's books and Sunday School supplies. Thank you all for your interest in, and support of, the Book Stall.  
Mahalo

# The Interim Editor's Corner

### OLYMPICS AND BERKELEY

Last fall, our twenty-six year old daughter (from the Nutmeg State) suggested that her parents join her at the Olympics.  
We picked up the L.A.O.O.C. ticket booklet at Sears, placed our order and received our tickets in June for the events at the prices (almost) that we wanted.  
In the meantime, I worked on arrangements to rent a car from friends in San Marino. Through other friends, we found a home in Whittier where the three of us could stay as paying guests.  
All of our pre-Olympic California phone calls and letters were definitely worth the effort as we had a fine hostess and host, a good car, good weather (the Lord had a hand there. . . only one smoggy day) and no traffic problems. Of course, after we saw our event, we would dash back to Whittier and catch the other events on TV.  
I learned that before the Olympics, the Bishop of the Diocese of Los Angeles, the Rt. Rev. Robert C. Rusack, sent a letter to every Bishop in the Anglican Communion, offering to advise Olympic visitors where and when they could attend Episcopalian services. The Bishop also offered to make portable altars available to the visiting clergy.  
We did not witness the opening and closing ceremonies, but we did attend five events. What a thrill to see Carl Lewis win his preliminary heat at the Coliseum. But even a bigger moment came when we waved high our American flags as our U.S.A. women's volleyball team came from behind to win three games straight and their preliminary meet.  
When I returned to Honolulu still thinking Olympics, the "Keeping Watch" of Holy Nativity caught my eye (I do read

all the Parish/Mission newsletters I receive!). The Rev. Charles T. Crane's letter says better that I, something that was on my mind: at the Olympics, what is being worshipped? Fr. Crane writes: "To the extent that in an extravaganza we are celebrating physical prowess, or nationhood, or gold medals, or records set, as ends as themselves then we are guilty of displacing god. If we see the accomplishments and give thanks with the participants, acknowledging in our hearts that all of this is possible because of the magnificence of men and women when they reach their potential as intended by the Creator, then. . . this is worship as much as the admiration of a glorious piece of music, the unveiling of a masterful stained glass window or the hearing of a flawless, clear recitation of a psalm".  
The Holy Nativity Rector's letter ends with: "There will be many other occasions for commentary on the sin of individuals and the arrogance of nations. Certainly there was some sin and no little arrogance in Los Angeles. But on balance, the XXIII Olympiad was a real treat; it was a monument of human achievement; and. . . a great way. . . to know that we, too, are part of that portion of the universe that is so magnificently and wonderfully made."  
From Whittier, we drove up to Berkeley to stay with a widowed friend (Episcopalian). We visited San Francisco, Indonesian-born relatives of my wife and former next-door Connecticut neighbors who now live in Napa.  
We had the opportunity of meeting the Venerable Clarence H. Stacey during dinner one evening at the Berkeley City Club.  
I understand that it was he who started Province VIII-the Episcopal Province of the Pacific, which is holding its annual

meeting (Synod) the first week of September. Bishop Browning, Dick Chang, Jack Lookwood, Tom VanCulin and others will be attending in Portland, Oregon. Archdeacon Stacey sends his "best wishes and greetings" to his many friends in Hawaii.  
Since CDSP (the Church Divinity School of the Pacific) is located in Berkeley where we were staying and plays such an important role in training the clergy of this Diocese, I wanted to visit the institution. Christina Rider of the Development Office introduced me to just-graduated Deacon Randy Gardner, who took me on a first-class tour, including the magnificent library of the General Theological Union, of which CDSP is a major part.  
Prior to my tour, I did have a most pleasant meeting with the Very Rev. William S. Pregnall, Dean and President of CDSP.  
I also met Vice Dean Jim Jones, who also graduated from "my undergraduate university". . . Michigan.  
Bill, Jim and Christine wish to be remembered to their many friends in our Diocese.  
Our daughter departed via air back to Hartford, with the hope that she did not make a mistake in choosing athletic coaching and management as a career (like so many young people today, a B.S. and M.A. and no full-time job).  
My wife and I drove back to Los Angeles for our Honolulu flight, realizing that this would probably be the only Olympics we would ever see. . . and very thankful for the opportunity just finished.  
I acknowledge that "someone" must have pushed me to persist in making all the arrangements for the trip. After all, I would never have seen CDSP or met more Episcopalians.

## Letters To The Editor

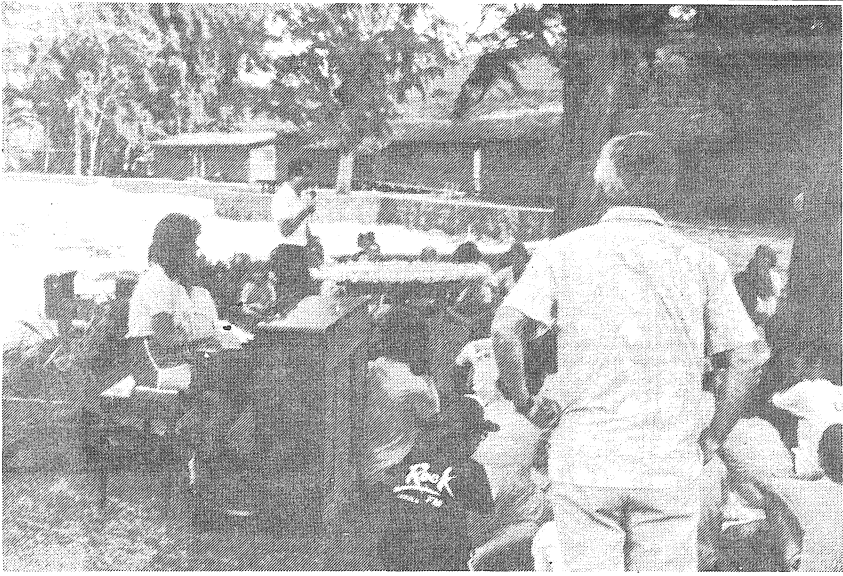
Dear Sir,  
The June edition of the Chronicle mentioned receiving a poem by Ruth Jenkins, former Priory teacher, on the proper usage of "the Reverend". I will be interested in reading the poem in some future edition as it evidently wasn't published in June.  
Certainly the word "reverend" (often mis-spelled rev-rund) runs into more difficulty than most any other in common Church usage. There are a few other such words. One is "clergy", which refers to the whole body of ordained persons in a given area or locale, such as "the clergy of the Diocese", or "the Hilo clergy". Up until recently when refering to an individual member of the clergy one simply used the word "clergyman". But with the advent of the ordination of women that word has run into the same sort of trouble as "chairman". Sometimes these days one comes across the term "a clergy" in the at-

tempt to overcome the difficult. But "clergy" is a collective noun, like the words "fauna", "cattle", and "machinery". For such nouns there are no singular forms. One just can't speak of "a clergy" any more than one can of "a cattle".  
There is a simple, little-used word that might be revived here which is even better than the sometimes suggested, but somewhat ponderous, term "clergy person". That word is "cleric". A cleric is an individual member of the clergy.  
Another troublesome word these days is "minister". We used to use it in reference to an ordained person—a cleric—but since the re-discovery of the ministry of every baptized person that is no longer possible. In view of the statement in the Prayer Book (p.855) that "The ministers of the Church are lay persons, bishops, priests, and deacons" the word "minister" could presumably refer to any baptized person in the Church. These days the

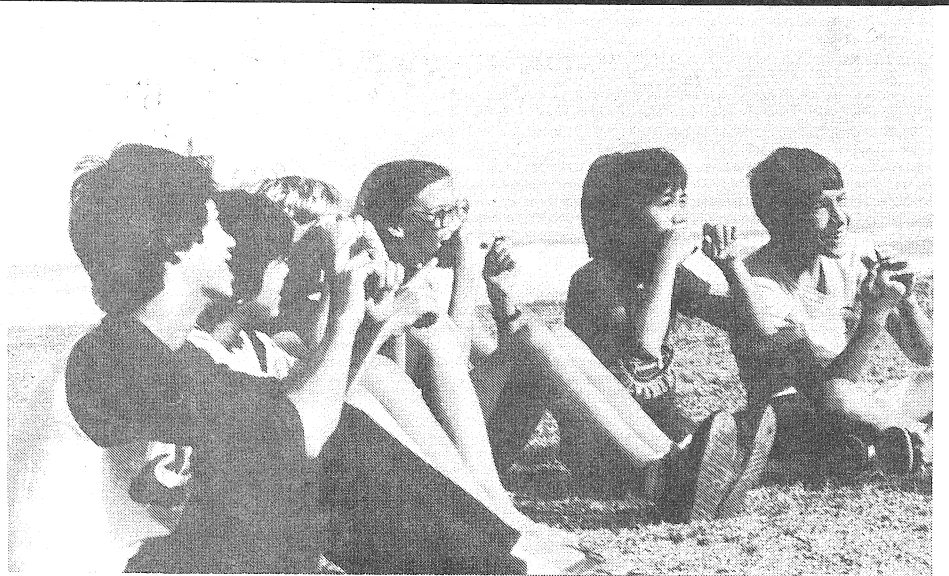
definition of "a minister" is any baptized person who performs any function in the name of Christ. The clergy then, make up roughly .3% of all of the ministers in the Church.  
  
Sincerely,  
Ed Bonsey  
The Rev. W. Edwin Bonsey, Jr.  
*We are pleased to have Ed Bonsey's letter regarding clergy terminology and publish below the helpful poem sent to us by Ruth Jenkins in La Jolla, California.*  
—Ed.  
  
Call me Mister, if you will;  
Call me Vicar—better still.  
Or perhaps the High-Church frill;  
Even Father, brings no chill.  
Mister, Vicar, Father, Friend;  
Names and titles without end.  
But how that man my heart doth rend;  
Who blithely calls me Rever-end!



# A REMARKABLE SERVICE TO THE DIOCESE AND COMMUNITY



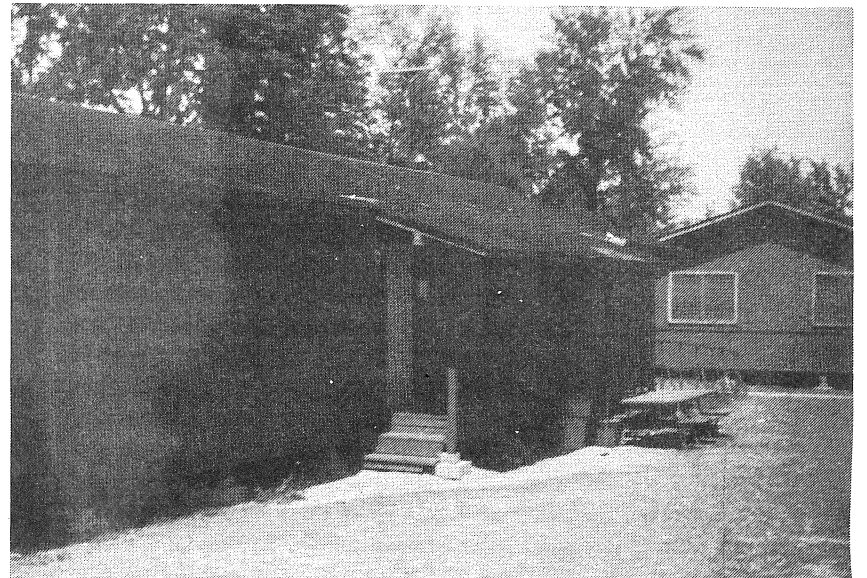
Camp Director, the Rev. Brian Grieves, conducting the July-1982 Seawall Dedication Service, Bishop Browning with back to camera. Seawall and white sandy beach in the background.



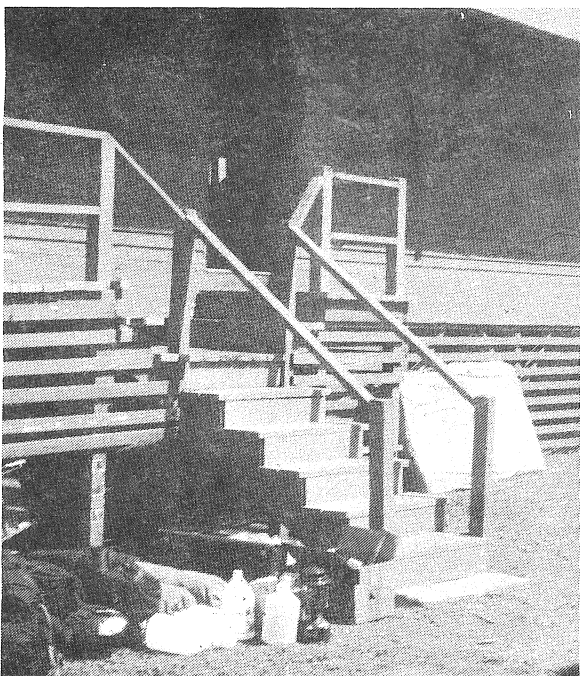
A "Song and Motion" session at a late afternoon campfire.



An ocean fauna class searching for specimens.



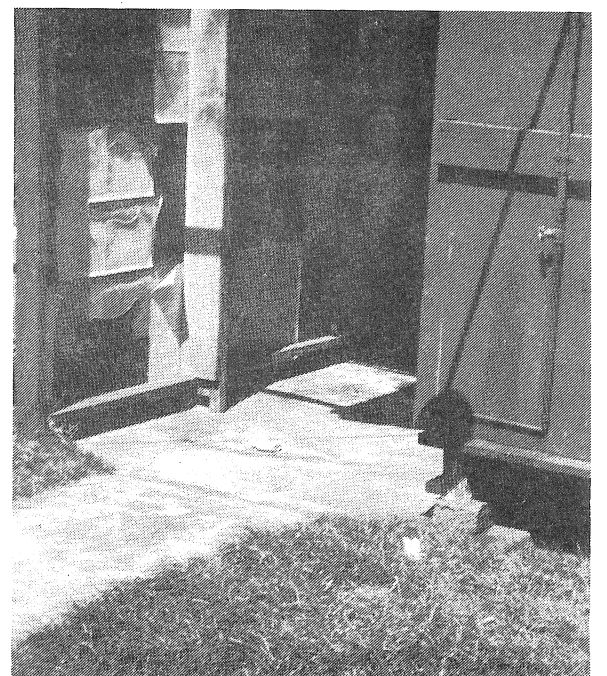
View of Cabin C/D, with E/F in the background.



Steps on side of building which houses the Chapel of the Holy Spirit.



Outrigger canoe and water safety class.



Outside and inside showers.



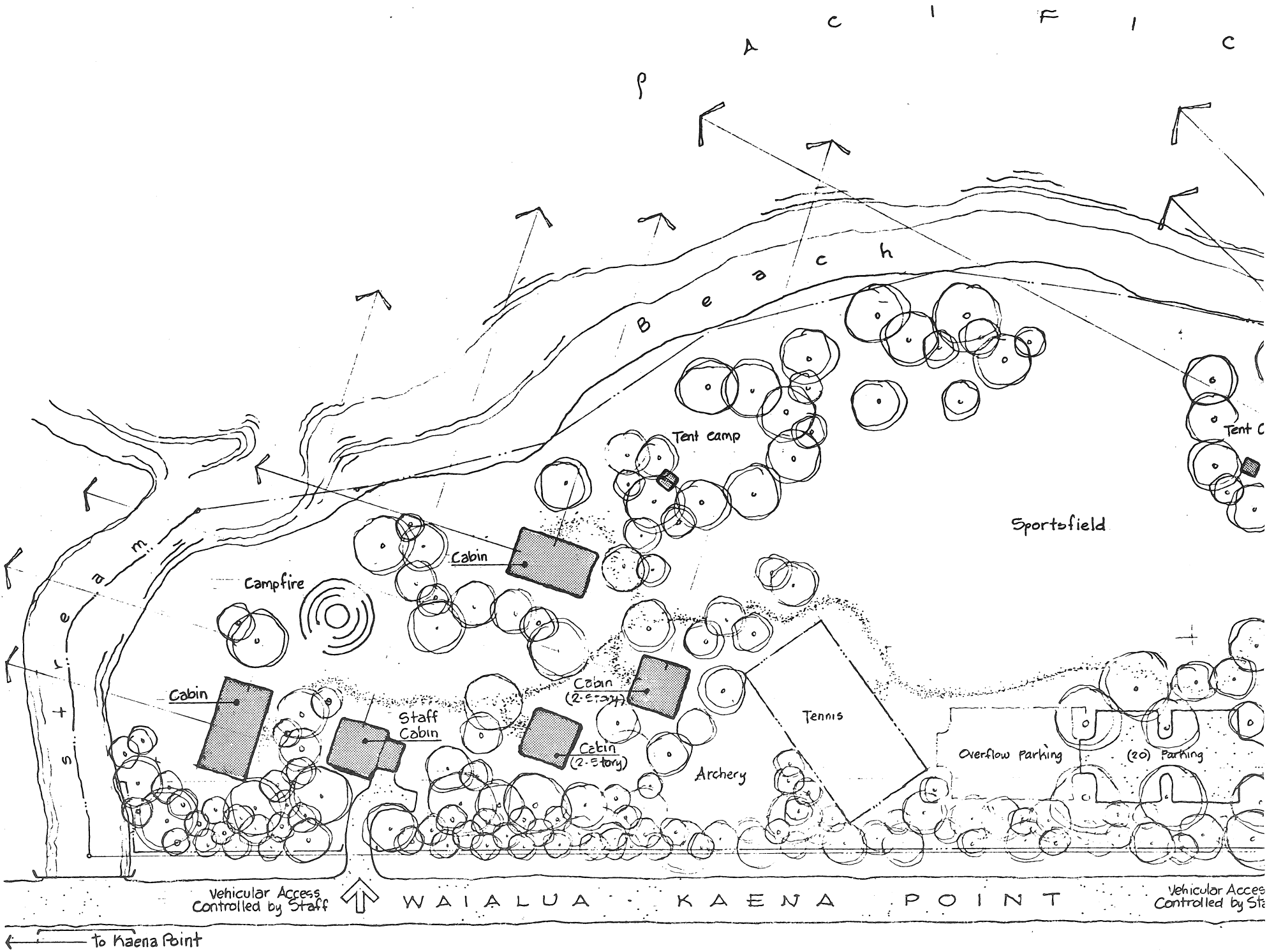
A tenting group nestled among the stately hardwood trees.



An adult group-Cursillo 34-poses near the blue Pacific Ocean.

*Photos supplied by Camp Mokuleia, Keith Adamson and Sumner Howard.*





# MASTER PLAN

## CAMP MOKULEIA

Continued from Page 1, Column 4

The Task Force members are the ones who have been doing the future planning under the direction of the Camp Department, while the Camp Department itself has been handling the immediate problems that arise. The guiding light of both of these groups is the Rev. Brian Grieves, who is our most able, enthusiastic, and tireless Camp Director. Without him these groups would not be as effective an instrument as they are in the running, growth, and betterment of Camp Mokuleia.

Special kudos should also go to the ad hoc members of the Camp Department who are not members of the Diocesan Council, but who do attend Department meetings to share their expertise and enthusiasm.

Jan Simonson  
Diocesan Council  
Chairperson-Camp Dept.

I am happy to hear that there will be an article in the Chronicle as I feel that it is beneficial for our future campaign for pledges. The more informed people can be, the more they will want to be involved.

My husband and I were both campers in the beginning of Camp Mokuleia, so the camp is very much a part of both ours as well as our children's childhood.

I feel that outreach should be a big part of our campaign as the camp is one of The Episcopal Church's largest gifts to the community. It has, for years, provided the ideal atmosphere for the gatherings of many groups beyond the yearly summer campers. This campaign will provide an opportunity to all that have benefited from the outreach of Camp Mokuleia to be able to give back in thanksgiving so that the camp can continue to provide an ideal facility for the nurturing of the community.

The need for renovation is obvious. To stimulate the desire of the community to participate, is necessary.

Marilyn Cleghorn  
Diocesan Council  
Member of Camp. Dept.

My personal appreciation of the Camp results from participation in activities at Mokuleia and concern for its use and future development as a member of the Diocesan Council's Camp Department. I have seen the Camp as a team member for Cursillo on weekends, as tutu kane with

Holy Nativity Family Camp and with work weekends as one of the Friends of Camp Mokuleia.

My overnight experiences at the Camp influence my views of development needs. When I was young, I camped a lot as a Boy Scout. We slept on the ground with little, if any padding. We were often cold and/or wet, but always went back for more. Our own cooking was horrible, but we ate it without much complaining. However, age changes one's point of view. For a youth camp, the Episcopal Church has a wonderful asset. For an adult conference center, it leaves much to be desired. That is why I am excited about the plans being drawn to develop the facilities, step by step, over the coming years so that it will serve much more effectively the whole spectrum of Church and community needs.

The major investment in the new seawall was an imperative first step. Now the remaining land is protected from further erosion and the rest can follow. I took some fotos when our Bishop, Ed Browning, blessed the new seawall. That was a time for celebration!!

Keith Adamson  
Diocesan Council  
Member of Camp Dept.

We show above the Master Plan prepared by Ossipoff, Snyder and Rowland and approved by the Diocesan Council.

There are also drawings for Phases I and II of this plan, as referred to in the text of this Chronicle. However, space would not permit the printing of those drawings.

To the right, we show a non-scale drawing of the existing camp facilities.

For reference, the western boundary of the 3-acre, Diocesan-owned parcel of land would be a north/south line just to the left of the Crafts Building on the proposed Master Plan.

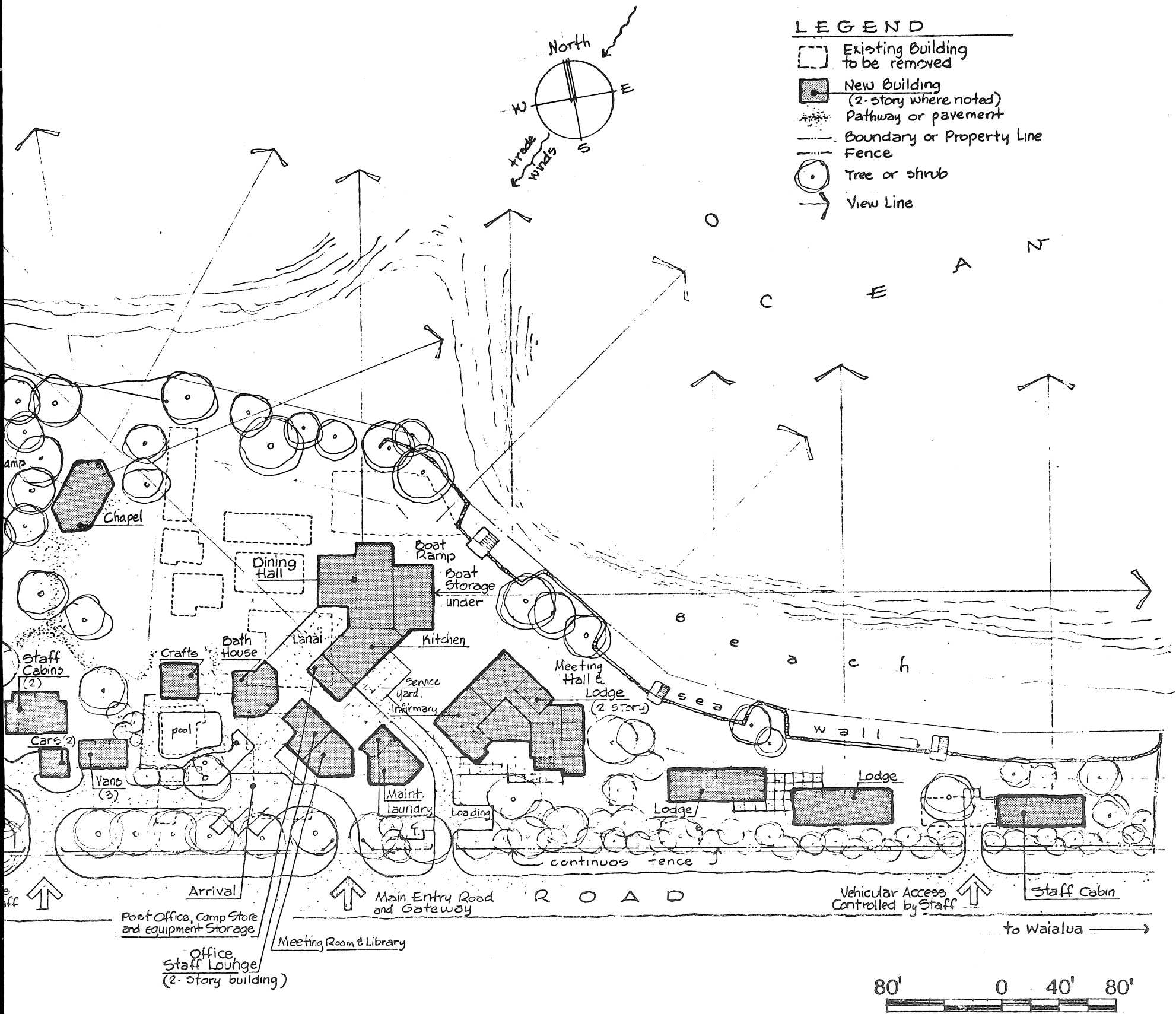
The occupancy data of Camp Mokuleia provides a vivid picture of its use by an almost unbelievable array of people.

A survey of 1983 campers shows the following religious attitudes based on 278 individuals: Episcopal—26%; Unchurched—30%; Roman Catholic—10%; Non-Denominational—14%; Denominational—17%; Other Faiths—3%.

The number of schools represented by 262 1983 campers follows: Public (Hawaii)—73; Public (Non-Hawaii)—20; Roman Catholic Diocese of Honolulu—9; Episcopal—4; Lutheran—5; Punahou—1; Other Private Schools (Hawaii)—9; Other Private Schools (Non-Hawaii)—6. The total schools represented was 127.

T  
folle  
Hor  
Aie  
Oah  
9%;  
Isl  
(ex  
“  
of c  
six  
120.  
F  
nigh  
Can  
(3.8  
1,00  
cop  
Put  
Cor  
F  
16,  
Sur  
tota  
dro  
Pri  
1,50  
198  
the  
can  
Sch



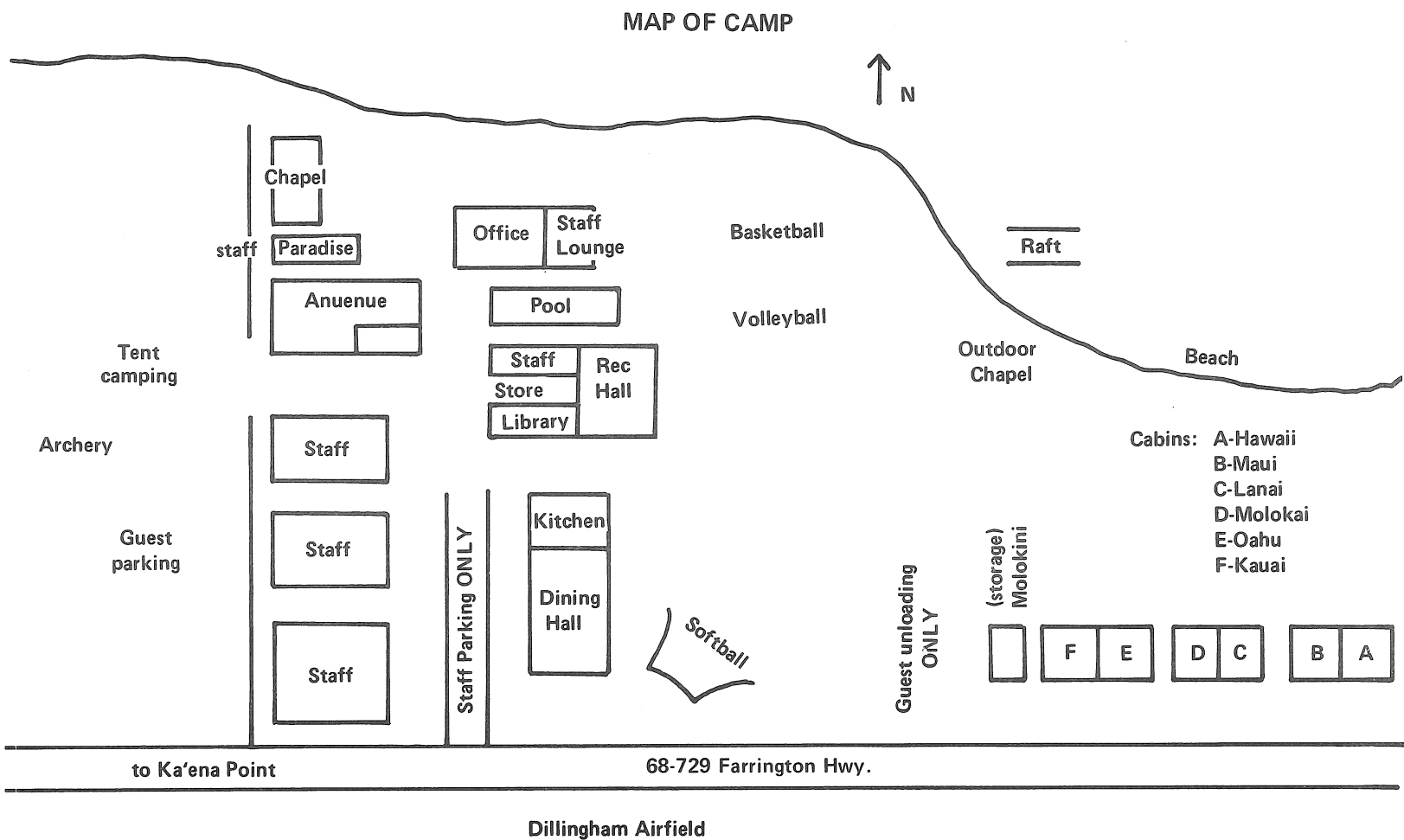


the home areas of 284 campers in 1983  
ows: Windward Oahu—20%; Central  
olulu—14%; East Honolulu—15%;  
a, Pearl City, Leeward—11%; Central  
u, North Shore—10%; California—  
Kauai—9%; Hawaii (The Big  
nd)—3%; Maui—3%, Out-of-State  
cluding California)—6%.

Camper Nights” is another yardstick  
camp occupancy. Twenty campers for  
nights would represent a statistic of

or 1982, a total of 15,206 camper  
nts were recorded, with Summer  
p representing 39% of the total  
86). Other uses representing over  
0 camper nights include: the Epis-  
al Church, Easter Seals Society,  
lic Schools, Other Churches and  
munity Organizations.

or 1983, total camper nights reached  
24, an increase of 1,018 or 6.7%.  
mmer Camp represented 26% of the  
1 (4,237), with Public Schools  
pping below 1,000. However, the  
ate School users increased to almost  
0 camper nights. Please note that this  
2/1983 comparison does not include  
Outdoor/Environmental Education  
ppers from both the Public and Private  
ools.



# About the Diocese

The Bishop has appointed the **REV. JAMES P. ERON** to be the Vicar of **CHRIST MEMORIAL Church**, Kilauea. This culminates a search process which began in February of this year.

Jim will begin his ministry at Christ Memorial on September 1, 1984.

Marinell plans to join Jim as soon as the moving arrangements from Maui have been completed.

\*\*\*\*\*

A **QUEEN EMMA SQUARE PLANNING COMMITTEE** has been studying the utilization of all the Church's property at the square.

Chaired by Fred Overstreet, member of the Diocesan Council and its Finance/Real Estate Department, presentations of a Conceptual Plan have been made to the Vestry of St. Peter's Church, St. Andrew's Priory, St. Andrew's Cathedral and the Diocesan Council.

At its August 17th meeting, the Diocesan Council, in view of some concerns raised by St. Peter's, directed the Planning Committee to "look again at Phase II of the plan and, with St. Peter's concerns in mind, recommend to the Council a course of action to achieve an alternative plan".

\*\*\*\*\*

**ST. TIMOTHY's** Episcopal Church in AIEA (next to Kam Drive-In Theater) will have an Outreach **HULI HULI CHICKEN** sale on **SATURDAY, SEPTEMBER 15, 1984**, from 8 AM to 1 PM. Each 1/2 chicken (13/14 ozs.) will be \$2.00

Proceeds from the sale will support the following:

- (1)Institute for Human Services
- (2)Kalihi-Palama Immigrant Services Center
- (3)Church Divinity School of the Pacific
- (4)Hale Kipa (Emergency Shelter for Youth)
- (5)Abuse Prevention and Education Center
- (6)Hoa Kokua Hospice Volunteers, Inc.
- (7)World Hunger Day

For tickets or further information please contact Carolyn at the Church office at 488-5747 or Bob Reed at 488-3865.

Mahalo for your kokua!!

\*\*\*\*\*

Bishop Edmond Browning will be in attendance when **HOLY CROSS CHURCH** in Kahuku on Oahu will be celebrating its **25TH ANNIVERSARY** on September 16, Sunday.

A special invitation is going out to all the "oldtimers", according to Lola Perry.

There will be a big Sunday Brunch served.

\*\*\*\*\*

The **REV. RICHARD P. WARD**, formerly at St. Andrew's Cathedral, has been called to be the Assistant Rector at St. Christopher's Episcopal Church in Lubbock, Texas.

Rick, his wife, Dona, and Kandi will be moving to Lubbock. Friends may address them at the church at: 2807 42nd Avenue, Lubbock, TX. 79413.

The Chronicle joins their many friends in wishing the Wards God-speed and best of success in their new undertaking.

In 1880, Queen Emma, as a fund-raiser, held a **FALL MARKET** at **ST. ANDREW'S CATHEDRAL**. She made a profit of \$2,000!

Those early years of the market were exciting, with Queen Kapiolani, Queen Emma, and Princess Likelike having fancy tables. The year they used the Market for a building fund, Princess Likelike had a table selling Hawaiian food. Even the little 12 year old Princess Kaiulani made \$104. All this went to build, furnish and fence the Cathedral.

As they say, "You've come a long way, baby!" Today that money is spread through the Diocese at individual parishes and the various outreach programs of St. Andrew's Cathedral.

The **104th FALL MARKET** is to be held **SATURDAY, OCTOBER 6** and will continue the tradition started by Queen Emma.

The 1984 Market will feature some added attractions: a silent auction with some exciting items; craft booths; food items from many churches in the Diocese, including St. Barnabas's famous hot dogs and our own St. Andrew's hamburgers; a puppet show; entertainment by Kevin Mahoe and his Halau (hula troop); fresh flower leis; lovely plants sold by IHS; shave ice; and special sales by the St. Andrew's Economy Shop.

If any church would like to participate who hasn't already signed up, call the Cathedral (524-2822) and leave your name and phone number with the receptionist.

One tradition that continues even today is the opening of the Market by the Roayl Hawaiian Band . . . so hope to see you at 9 a.m. Saturday, October 6th at the **FALL MARKET** at St. Andrew's Cathedral!

\*\*\*\*\*

Dean Lin Knight has appointed **KAY HOMSEY**, from San Francisco, to be the Cathedral's new Program Officer.

The Program Officer's job for the rest of 1984 has been made possible by a generous donation from a Cathedral family. Originally conceived of as a shared job with the Diocese, the joint job description was really talking about two different people. Since our needs are immediate and critical, it was decided to go ahead and hire someone for the Cathedral alone. A number of applicants were interviewed.

Initially, Kay will devote her time to the Church School "Carry A Story" program. She met with John and Sandra Bright before leaving San Francisco to obtain the latest updates from them. Kay will also be working with Karen Swanson on the youth program for the fall, as well as with Eric Potter on adult education.

Kay is a professional educator with extensive experience as a teacher, both Church School and weekday. She has been a Church School superintendent at both Trinity and St. Aidan's in San Francisco.

Most recently Mrs. Homsey was a trainer of leaders at the Diocese of California's Lay Academy.

A Cursillista, Kay plays the banjo, is an avid hiker and is accompanied by her 15 year old daughter, Diana.

—from St. Andrew's Ka 'Upena



Father James Nakamura, with, on left, his wife, Louise, accepting retirement party congratulations.

**Computers in the Church?** This will be the subject of a seminar entitled, "Church Management with Micro-Computers" led by the Rev. Albany To of the Church Management Institute in New York. The one-day seminar on Saturday, September 15 will cover a broad range of topics including, "Who needs a Computer," what a computer can and cannot do for a church, what to avoid in computerization, purchasing techniques for soft- and hardware, and computer terminology. "Hands-on" demonstrations of computer hardware and software programs will be presented at the seminar workshops.

The seminar lasts from 9:30 am till 4:00 pm. Registration fee is \$40 per church (or group) and covers as many as wish to participate from that church. To register call **ST. PETER'S CHURCH** at 533-1943.

\*\*\*\*\*

## SIXTH ANNIVERSARY AT IHS

IHS's Sixth Anniversary was celebrated on July 6, with our very gracious Mayor Eileen Anderson cutting the IHS cake. This will make the second year that the Mayor has honored IHS with her presence.

Two other cakes were also very much in evidence — one to mark Father Claude DuTeil's birthday, and the other to serve as an Aloha to Father Claude and Roberta who left for a well deserved vacation on the mainland. The Rev. Rick Ward will fill-in at IHS during Father Claude's absence.

The Episcopal Church Women provided and served a variety of delectables and soft drinks to the gathering of patrons and friends. Welcome Fawcett of the City Council arrived after the festivities were over. However, she was content to visit the kitchen and partake of some of the leftovers there. Some of the patrons had generated a good appetite for this feast by doing their daily cleaning of Aala Park, the area around the Toyo Theater, and Beretania St. and the parking lots in the IHS block. (In addition, they clean the Union and Fort Street Malls on an intermittent basis.)

The TV people were on hand to focus in on the 3-in-1 party, which was later shown on TV and publicized in the newspapers.

IHS is hoping that its seventh anniversary can be celebrated in a permanent "home" — one that the "Street People" can call their own.

—By Richard Peterson

## FATHER J. S. NAKAMURA'S RETIREMENT

On June 30, 1984, old and new members of Good Samaritan Church turned out in full force to honor the Rev. James S. Nakamura upon his retirement. The banquet was held at the Ranch House in Honolulu. Among the guests present were the retired Bishop of Hawaii, the Rt. Rev. Harry S. Kennedy and Mrs. Kennedy. Eiji was the master of ceremonies. Father Nakamura was presented with many gifts and well wishes.

Father Nakamura started his long ministry on July 21, 1940, when he was ordained Deacon at St. Andrew's Cathedral. He was then priested on February 7, 1971, after which he served on short-term interims at Christ Church, Kealakekua, Hawaii and the Holy Innocents' Church in Lahaina. His other ministries were: From November 1941 to July 1944, the Holy Apostles' Church, Hilo; from August 1944 to 1958, Good Samaritan Church; from August 1958 to 1964, Christ Church, San Francisco; and from 1965 to April 1971, St. James, Kamuela, St. Columbas', Paauilo and St. Augustine, Kohala. In August 1971, he retired, but was again called to serve at Good Samaritan in 1973. During this period, he revitalized the Japanese language services both at Good Samaritan Church and at St. John's Church, Eleele, Kauai.

Father Nakamura has tirelessly served the Episcopal Church for many years and has left an indelible mark on the lives of many, many people. With his well deserved retirement, Father Nakamura plans to golf to his "heart's content" and also do some traveling.

\*\*\*\*\*

**ALL SAINTS'** on the island of Kauai in Kapaa is very proud of one of their parishoners.

He is the new Chief of Police for the Island, **CALVIN FUJITA**.

We join All Saints' in congratulating Calvin on his appointment.

\*\*\*\*\*

**GOOD SAMARITAN** in Honolulu is blessed with a striking new design for their Sunday Bulletin.

It features a fine line drawing of Our Lord comforting the Samaritan and was created by member **LESLIE HATA**.

Leslie is a member of the Bishop's Committee at Good Samaritan.



# DETAILS FROM THE CAMP PLANNING REPORT

## BACKGROUND INFORMATION

The Episcopal Church in Hawaii obtained its three-acre site at Mokuleia in 1947. Most of the land had served as a country home for a prominent island family. The original house, guest quarters and garage still exist, although in a deteriorating condition. An army barracks placed on the property still serves as the camp Chapel, and an old quonset hut which served as a dormitory has been replaced with three cabin duplexes built in the 1960's. The present Dining Hall was built in the early '60's. The office building (a former construction site office) and a two bedroom house were donated during the 1970's. Mokuleia has never had a formal building program based upon a Master Plan.

Since 1971, the camp has leased a 27-acre parcel of land adjacent to our present site. For the past six years the Diocese has been in negotiations with the owners of that parcel to obtain approximately six acres of this property.

The Task Force envisages a Master Plan to include eventual ownership of this six acres in order to allow increased programming services to adult groups and expansion of children's services.

In February 1982, construction of a seawall was completed. This resolved a long standing concern about erosion of the property and allows for planning the future of the site.

Despite summer programs serving thousands of children in the '50's and '60's, it wasn't until 1969 that the first full time camp director was appointed. This has led to significant increases in program and usage to the point where the present facilities are viewed by many as inadequate to the future needs of the Diocese and the community it serves.

Recently, a growing awareness for the beauty of the site has emerged. It's appraised value in 1979 was \$1,029,000. The land is beautiful in contrast to the deterioration of its buildings. A feasibility study conducted in 1981 by a consultant from the national church highlighted this contrast. The Camp Department and Long Range Task Force now wish to address the proper stewardship of this valuable Diocesan asset so that the facilities are in concert with the beauty of its site and the high quality of its program.

This report is based on the premise that the ownership of this land is a trust which demands a commitment corresponding to the magnitude of this trust. And its hopes to describe the form which this commitment might take.

## PREFACE:

The Diocesan Convention held in November 1983 authorized the preparation of this **Master Plan for Camp Mokuleia, the Episcopal Church Camp**. Since that time, numerous meetings and interviews have been held. Field trips to Camp Mokuleia and to other camps on the mainland and on Oahu have been made to gather information on camps and conference centers in general, and in particular about the task of Camp Mokuleia.

The importance of this work was stated over and over again by all those people interviewed. And these views are re-stated in the Mission statement at the beginning of this report.

The relationship to the site was another major concern, and again a reflection of the Mission statement. The people inter-

viewed in this study were very protective of the special nature of the camp and its grounds; and they expressed a strong desire to preserve the natural characteristics of the site. All improvements should indeed enhance and promote the motto "He Lau'oko'a — A place apart."

The relationship between youth and adults on this relatively small site was discussed at length. Possible conflicts were foreseen; and yet use by more than one group at a given time was felt to be necessary and desirable. Each group must somehow be allowed to maintain its individual identity when sharing camp facilities. Clear boundaries were called for. Yet these boundaries must be flexible in order to accommodate different group sizes and changing needs.

The information and analysis of these and other concerns presented in this report is intended to serve as a guide, to be a format for understanding the mission of the camp in relation to its physical development.

## MISSION

### PURPOSE

The purpose of the Camp Mokuleia/Conference and Retreat Center shall be to provide programs and facilities at Mokuleia that will assist the Church in proclaiming the ministry of Jesus through the building of:

- Positive Self Images  
(We are made in God's image)
- Interpersonal Relationships  
(Love your neighbor)
- Responsibility for the environment  
(Stewards of creation)

### OBJECTIVES

The objectives of the Camp Mokuleia Master Plan are given most clearly in the mission statement "*Philosophy of Camps, Conferences and Retreats in the Diocese of Hawaii.*"

The following comprise the major principles of this philosophy:

1. The Affirmation of Creation
2. The Importance of Community
3. The Need for Aloneness
4. The Ministry to Youth
5. Service to Ecumenical, Unchurched and Community Organizations

In developing this philosophy, the location or environment of the site is the first consideration. The story of creation in the Book of Genesis says, "God saw all that he had made, and it was very good." Through its natural beauty, the camp, conference and retreat center shall be a reminder of God's pleasure with Creation and serve as a challenge for humanity not only to enjoy, but to be just stewards of all the environment. Furthermore, the Creation included people, and the facility should reflect a comfortable, but simple style of living, conducive to its natural setting and exemplifying the community of the early church. The facility should not dominate the environment, but support it. Principles of conservation, natural beauty and simplicity are key elements of this philosophy.

Christians in the New Testament are described as an intimate body of people, living and sharing together. "Constantly they met together to hear the apostles teach, and to share the common life, to break bread, and to pray." (Acts 2:42) The lifestyle of most Christians living today rarely allows for this sense of intimacy to develop in most church communities. Fellowship among the faithful is limited and restricted.

The value of a diocesan resident camp, conference and retreat center is in bringing Christian communities together for an intense experience of corporate growth. Here teaching may take place, a common life is shared, bread is broken, prayers are offered, and all in the same experience. Unless Christians do come together in a resident setting, a dimension of the Christian life is lost. Fellowship suffers. The body becomes impersonal. Any member of a Christian Community needs for his or her own nature the intimacy of other members of that community.

In addition to corporate growth, there is the possibility for personal enrichment. Again, today's lifestyle leaves little time for reflection and meditation. A resident center in a natural setting can provide a Christian with sustained, uninterrupted time for personal growth through retreats.

The Camp is intended to be used by people of all ages with a clear remembrance that it has a long established commitment to a ministry for young people. Jesus scolded his disciples for chasing children away. This philosophy embraces the importance of this ministry as it has developed over the years.

Opportunities for corporate and personal growth will be extended to other Christian denominations. In addition, the use of the center for camping must take the Church's mission into account. We are exhorted by Jesus to serve others, and use of the center by community organizations consistent with the Christian Gospel is to be encouraged at the facility.

It is the intention of this statement that usage of Camp Mokuleia will be of value in improving the quality of life both within the Diocese and the society in which it resides.

## GOALS

The following is a list of what we believe are major goals for this project. These goals have developed from the input of the various groups associated with the camp (including the user groups, the camp staff, and the Episcopal Diocese of Hawaii) as well as from our examination of the various issues concerning the development of Camp Mokuleia. These goals reflect our positions on those issues:

- To maintain the basic philosophical goal of the camp experience
  - personal growth through self-awareness and self-improvement
  - developing relationships with others in a community setting
  - developing an appreciation of and responsibility for the natural environment
- To continue the camp's dedicated service to youth through its successful youth programs
- To diversify the make-up of the camp's users to encourage its use by new groups of users (e.g., adult conference groups, etc.)
- To improve the economic position of the camp by optimizing its user occupancy; namely, by encouraging additional use of the camp during those periods when the camp has traditionally been slow (e.g., the period of November-January).
- To preserve the special "country atmosphere" of Mokuleia in both the natural and the built environments on the site:

- major elements that contribute to this special atmosphere might be maximized including open space, vegetation, fresh air, the beach and the beautiful views.
- any buildings on the site should fit unassumingly into the basically rural residential neighborhood surrounding the camp
- to acquire, if the opportunity arises, any additional parcels of land to provide more space for the camp's program
- to enhance the camp's image and public appeal in accordance with the camp's motto: "He Lau'oko'a — A Place Apart".

## DEFINITION OF CAMPS, CONFERENCES AND RETREATS

**Camping:** Camping is an experience of living and learning in the outdoors. It makes maximum use of the natural resources provided by the site itself. Camping seeks to provide the factors that will result in closer relationships between camper and leader and the world of nature. Thus formal program buildings and permanent living shelters are not the prime concern. Simple shelters of canvas, wood, or other indigenous materials may well suffice.

**Conference:** A conference is characterized as a meeting of persons, often in small groups, for planning, study and discussion. Attention centers on problems and subjects which relate either to the life of the participant or to the life of the church. Included will be times for worship, play, study and work. The outdoor setting is important because it provides freedom from noise and other distractions, and opportunity for reflection upon the truth of the gospel and the realities of life.

**Retreat:** A retreat is the deepening of communion with God, with other persons, and with oneself. The nature of retreat consists of detachment from the claims of daily living as preparation for concentrating on this intention . . . The true retreat does not aim either 'to get work done', or 'to enjoy a holiday' or pleasurable inspiration. Its focus is not upon a task, a subject, a problem or pleasurable inspiration. The center and justification of retreat is found only in communion—in a coming to oneself, a participation with others in Christ, a being in prayer with God.

## PROCESS

Four components must be addressed here:

**Master Plan:** The purpose of master planning is to document the philosophy, objectives, goals and architectural requirements of Camp Mokuleia in a way that will inform decisions, and guide improvements and future developments so that they may occur in an orderly and prudent manner.

The Camp Mokuleia Master Plan will speak to the proper and most desirable development of the entire nine-acre site (three acres already owned by the Diocese and six acres to be acquired.).

*Continued on Page 8.*

# DIOCESAN CALENDAR

## SEPTEMBER 1984

- 2 Bishop at St. Mark's-Honolulu

3 Labor Day-National Holiday

3/4 Pre-Province VIII Meetings-Portland, Oregon

5/7 Province VIII Synod-Portland, Oregon

9 Bishop at St. Matthew's-Waimanalo

11 Bishop returns to office.

Urban Commission Meeting

12 Bishop at Holy Nativity(Evening)

13 Episcopal Churchwomen Board Meeting

BACAM Interviews

Diaconate Commission Meeting

14 BACAM Interviews

Commission on Ministry Meeting

Companion Diocese Meeting

15 Campus Ministry Workshop

Camp Mokuleia Master Plan Special Area Meeting-Hawaii, at St. Jame's-Kamuela

16 Bishop at Holy Cross-Kahuku

Camp Mokuleia Master Plan Special Area Meeting-Maui/Molokai, at Good Shepherd, Wailuku

18 Convention Planning Committee Meeting

Camp Mokuleia Master Plan Special Area Meeting-Kauai, at St. Michael and All Angels-Lihue

19 Camp Mokuieia Master Plan Special Area Meeting-Oahu, at St. Andrew's Cathedral

20 Episcopal Schools Commission Meeting

Seabury Hall Trustees Meeting

Finance Dept. Meeting

Program Dept. Meeting
- 21 Mission Dept. Meeting

Communications Dept. Meeting

Diocesan Council Meeting

Diocesan Council Budget Meeting

Convention Delegates Workshop-Maui

22 Lay Readers Training-Maui

23 Bishop at Grace Church-Molokai

26 Oahu Clericus

Standing Committee Meeting

28 All Convention material for the Chronicle due at Diocesan Office

29 Diaconate Training

House of Bishops Meeting-Mississippi

30 House of Bishops Meeting-Mississippi

## OCTOBER 1984

- 1 House of Bishops-Mississippi

2 House of Bishops-Mississippi

3 Leeward Area Budget Meeting

House of Bishops-Mississippi

4 House of Bishops-Mississippi

6 Annual St. Andrew's Cathedral Market

Maui Area Budget Meeting

Oahu Layreaders Workshop

7 Bishop at St. Luke's-Honolulu

"CPC" Sunday

Big Island Area Budget Meeting

8 Kauai Area Budget Meeting

Diocesan Office closed-Columbus Day

9 Windward Area Budget Meeting

10 East Honolulu Area Budget Meeting



At the July Anglican Consultative Council meeting in Lagos, Nigeria, Bishop Edmond L. Browning greets head of state, Maf. Gen. Muhammed Buhari. We will publish the results of the ACC deliberations in the next Chronicle.

- 11 Episcopal Churchwomen Board Meeting

VIM Task Force Meeting

Commission on Ministry Meeting

Central Honolulu Area Budget Meeting

12 Companion Diocese Meeting

13 Convention Delegates Workshop-Oahu

"LOVE 84" Workshop

14 Bishop at Trinity By-the-Sea-Kihei

16 Convention Planning Committee Meeting

17 Oahu Clericus

18 Finance Dept. Meeting

Program Dept. Meeting

19 Mission Dept. Meeting

Communications Dept. Meeting

Diocesan Council Meeting

Deacons meet with the Bishop

**WORLD FOOD DAY—1984** will be celebrated on Tuesday, October 16th. Sponsored since 1981 by the United Nations' Food and Agriculture Organization, Presiding Bishop John M. Allin has pointed out that the Episcopal Church's Hunger Office is one of the "hundreds of local and national groups" which supports this annual observance. Bishop Allin's message concludes with the following plea: "... with the fate of so many of our hungry sisters and brothers in mind, I ask that you support the work of the Presiding Bishop's Fund for World Relief with the utmost generosity". The **REV. DAVID E. CREAN**, Diocesan National Hunger Officer, is sending World Food Day materials to all parishes and missions.

\*\*\*\*\*

Dr. Charlene Archibeque will be visiting clinician for the Oahu Choir Festival being held September 19-23 at Central Union Church. She is Director of Choral Activities at San Jose University, where she teaches conducting, Choral methods and a graduate course in performance practices. Dr. Archibeque is in great demand as a guest conductor and clinician in the U.S., Canada and Europe. As part of the Festival, she will lead a four-day Choral Workshop with rehearsals on Wednesday through Friday, September 19-22 from 7:00 P.M. to 9:00 P.M. and on Saturday, September 23, from 9:30 P.M. to 12:30 P.M. Workshop registration is limited to 250 singers willing to make a commitment to attend all rehearsals and the concert. Registration fees are \$14 per person in groups of 10 or more received by September 14; \$20 per person individually; \$14 for members of the American Choral Directors Association or the American Guild of Organists. A Director's Workshop will take place on Saturday, September 22, from 2:00 to 4:00 P.M. Registration for this two-hour session designed for local church choir directors is \$10.00 per person. The Oahu Choir Festival Concert, which is free to the public, will be held on Sunday, September 23, at 4:00 P.M. in the Central Union Church sanctuary. The concert will be directed by Dr. Archibeque and will feature the music of Schubert, Handel and Purcell among others. Nyle Hallman, Central Union organist, will accompany the choir along with a special brass ensemble. For more information or to register, contact the Hawaii Council of Churches, 200 N. Vineyard Blvd., Honolulu or phone 521-2667.

## MORE CAMP DETAILS & PEOPLE INVOLVED

*Continued from Page 7.*

The Master Planning process must examine all aspects of the camp operations, study their relationships to each other, and organize them in time as well as on the land. To these ends, construction phases will be identified and it may be necessary to propose development options.

**Architectural Program:** An integral and more details aspect of the Master Plan, the Architectural Program relates activities and functional requirements to specific building needs such as square footage. These will be expressed in a Summary of Program Area Requirements and in Detailed Analyses of each type of building space anticipated. The synthesis of these two components is expressed in a Master Plans drawing, which illustrates the disposition of program elements on the project site in a diagrammatic manner. These documents will comprise the Master Plan Report. Adoption of the Master Plan Report will enable implementation to begin with the following components of work:

**Design and Construction of Phase One Development:** Complete architectural services including schematic designs, design development, preparation of contract documents, and administration of the contract for construction will be required for phase one development. It is expected phase one work will be limited to the three acres already owned by the Diocese.

**Special Processes:** A Special Management Area (S.M.A.) Permit, and a Conditional Use Permit (C.U.P.) must be obtained before beginning the first phase of Construction. The S.M.A. Permit is required by the location of the project on Oahu's shoreline; and the C.U.P. is needed because the camp does not conform to the City and County of Honolulu Zoning Ordinance.

\*\*\*\*\*

**MEMBERS OF THE CAMP MOKULEIA TASK FORCE**

We list below the members of the Task Force who have provided valuable input to the planning process. Also included is their parish affiliation and business or profession.

1) The Rev. Robert Brown; St. Christopher's; Rector

2) Patti Browning; St. Andrew's; wife of Bishop Browning

3) Bobbi Brodhead; St. Clement's; Special Projects-Hawaii Islanders

4) Betty Caskey; St. Clement's; retired government service

5) The Rev. Franklin Chun; St. Andrew's Priory; Chaplain

6) Michael Davis; formerly Holy Nativity; member of the American Institute of Architects

7) Ella Gifford; St. Elizabeth's; Richard Street YWCA and Mission Houses Museum

8) Jake Jacobsen; St. Jame's; Construction

9) Marvie Kelly; Waikiki Chapel; travel agent

10) Relda Loomis; Holy Nativity; Board of the YWCA and Kalihi-Palama Settlement Center; Community Outreach Division of the Hawaii Council of Churches

11) Rod Minami; St. Timothy's; U.S. Corps of Engineers

12) Nathaniel Potter, Jr.; St. Andrew's; Vice President-Marketing, Lone Star Cement Crop.

13) Paula Rudinoff; St. Michael and All Angels; realtor

14) Delos Seeley; Holy Nativity; Co-opted to the Diocesan camp Dept. and retired landscape architect-Dept. of Parks and Recreation-Honolulu

15) Tom VanCulin; St. Christopher's; Vice President-Marketing, Profitability of Hawaii, Inc.

**MEMBERS OF THE DIOCESAN CAMP DEAPRTMENT**

1) Jan Simonson, Chairperson; 2) Keith Adamson; 3) Marilyn Cleghorn and 4) Paul Sackett.

Co-opted members include Jack Brownrigg, John Hawkins, Marilyn Kali and Delos Seeley.

\*\*\*\*\*

Brian Grieves, Camp Director, reports that the camp's Calendar Year 1983 budget was \$255,000, with an operating surplus of \$1,400.

It was also pointed out that for several years the Diocese has been contributing \$15,000 per annum to the camp, which has been operating in the black for several years.