



# Hawaiian Church Chronicle

CHURCH OF THE  
EPISCOPAL CHURCH IN HAWAII  
JUN 9 1966

VOL. 56, NO. 4

EPISCOPAL CHURCH IN HAWAII

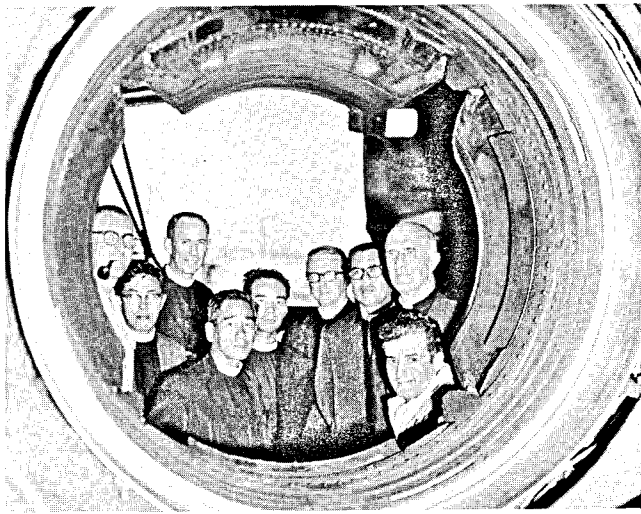
APRIL • 1966



UNIVERSITY OF HAWAII  
LIBRARY  
HAWAIIAN

*Toasting  
the  
bride  
in  
Okinawa*

*Hawa  
BX5731  
H3H3  
closed  
shelves*



OFFICIAL USAF PHOTO

RECENTLY the Base Chaplain's Office at Kadena Air Base, Okinawa entertained a meeting of the clergy of the Okinawa Episcopal Mission. Following the business meeting and lunch at the Kadena Officers Club, the clergy were taken on a tour of the base where they had a chance to see close-up one of the largest and busiest flight lines in the world. Of special interest was the opportunity to see at close range and to sit in the cockpit of an F-105 Thunderchief.

Attending the meeting, and pictured as they receive a briefing on an F-105 engine are (left to right), Chaplain, Captain, John R. McGrory Jr., Reverend Luke Kimoto, Reverend Furman Stough, Reverend John Yano, Reverend Peter Shinjo, Reverend Edmond Browning, Reverend Jiro Maeda, Right Reverend Charles P. Gilson, and Captain Rezk Mohammed, Information Officer of the 18th Tactical Fighter Wing.

Chaplain, Captain, John R. McGrory Jr., Episcopal Chaplain at Kadena was host for the meeting.

## Companionship—M.R.I. Notes

### Guidelines for Companion Parishes

The Diocesan Committee offers these suggestions for implementation of approved Companion Parish relationships:

1. Begin by writing to your companion parish. Tell them about your congregation—who you are, what you do, what the main emphasis of your parish work is, how you are trying to fulfill your mission here in Hawaii. It doesn't have to be long, but it ought to be enough so that you will no longer be strangers to those who read the letter.

Wherever possible, have the letter translated into Japanese here in Hawaii before it is sent. This means that your reply will be in Japanese and will have to be translated, but doing this here will save time and insure more rapid replies.

2. When you know each other try to see what your companion is doing that seems to be effective. Try to see if what the congregation in Okinawa is doing might be adopted by your parish. Similarly, you might offer them

suggestions that you have found helpful. The key, here, is mission—how are we expressing our love; how are they; how can we strengthen our work by sharing our experiences?

3. If there are physical or material needs these will probably be revealed in the process of acquaintanceship. But remember—the needs that we supply ought to help do the job rather than build up the structure. It is, again, our mission that ought to govern what we do.

4. Keep your eyes and ears open for news of people travelling from your parish to Okinawa or of people from your companion parish, or its environs, who may be coming to Hawaii. A person-to-person visitation will do more than a score of letters to bring home the importance of our companionship and the concern for each other that we share.

### Excerpts from Our Correspondence

*From Maui:* "At this point, we are trying to set up an Okinawa Scholarship Fund to be used for the furthering of some kind of education." (The Ven. Wm. Aulenbach)

*From Hawaii:* "At our last meeting of the Hawaii (Big Island) clergy meeting we held in Kona, we tentatively agreed that we would take the two mission churches on the island of Miyake as our companion churches." (The Rev. James Nakamura)

*From Kauai:* "The Vestry of All Saints' Church, and the Bishop's Committee of St. John's Church and the other missions on Kauai have agreed to accept St. John's Church, Nago, as a companion parish." (The Rev. Norio Sasaki)



CHILDREN of leper parents who are being cared for by the Rev. Peter Shinjo at the orphanage at Miyako.

*From Oahu:* "I'm sure that an association (with the Church of St. Peter and St. Paul, Naha) will be helpful for both St. Peter's and the Okinawa Congregation. There will be further discussion of the matter at our next committee meeting. . . ." (Mr. Tin Joe Pang)

*From Okinawa:* "We hope that through this relationship we may come to a deeper understanding of our own purpose and the meaning of our mission. . . . With this in mind, the following plan came forth.

1. Prayer Fellowship in each congregation . . .
2. Use of our monthly newspaper . . .
3. Clergy to study the MRI document . . .
4. Lenten offering to be contributed to Hawaii . . .
5. New Film Strip on MRI to be ordered . . .
6. Clergy Quiet day with a presentation on MRI in each congregation. (The Rev. Edmond L. Browning)

These excerpts show that MRI is taking shape throughout the diocese, and we urge those parishes and missions which are yet undecided on the means of their participation to give it serious consideration.

### St. Matthew's Church, Oroku

The Diocesan visitation team, which went to Okinawa last year, visited St. Matthew's Church only briefly. The buildings were still in the process of construction, and there was very little evidence of much activity.

The recent report from Mr. Browning on Okinawa shows the encouraging progress of this newest of our Okinawa missions:

"St. Matthew's would definitely like a companion parish. Just to briefly tell you about this mission—we have twenty communicants with an average attendance of twenty-two adults and seventy children on Sunday morning. Besides our regular parish program the eleventh of April we will have started a kindergarten with two teachers and twenty-six children enrolled. We are hoping that by the end of April we will have closer to forty children. We will use the hall in which we have our services on Sunday and one of our bedrooms."

—The Ven. Charles T. Crane, *Diocesan Chairman of MRI.*

## Episcopal Church Laymen of Hawaii

### Simple Rule of Life

- Daily Prayer
- Weekly Worship
- Regular Communions
- Personal Service
- Generous Giving



CHIEF JUSTICE WILLIAM SHAW RICHARDSON

## Local Man Honored

William Shaw Richardson, Senior Warden of Epiphany Church, Honolulu, former member of the Board of Directors of the Diocese, and a member of the Committee on Legislation of the Diocese, was sworn in as Chief Justice of the State of Hawaii on Friday, March 25th.

The former lieutenant governor received his commission from Governor John A. Burns in the historic Throne Room of Iolani Palace. He became the State's first part-Hawaiian Chief Justice of the Supreme Court. He comes from a family with a rich Hawaiian background.

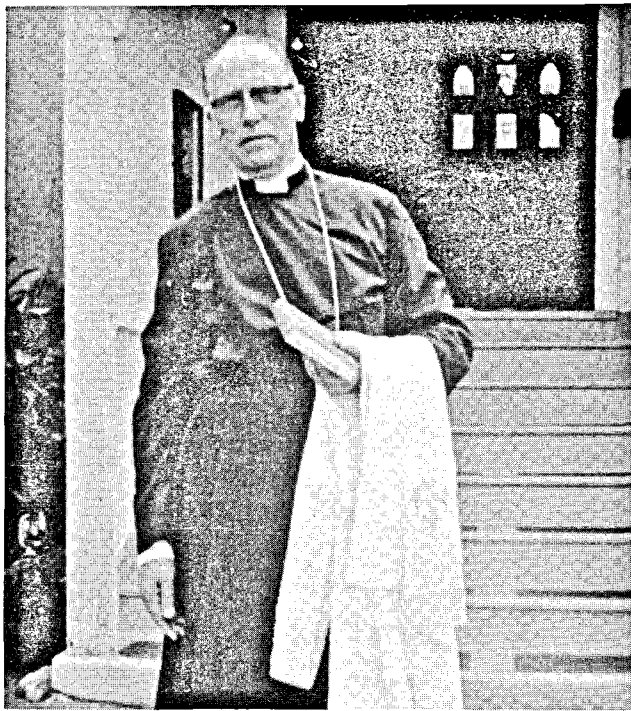
The Kamehameha Schools Glee Club concluded a half-hour concert with the Queen's Prayer and the Star-Spangled Banner after both the governor and the Chief Justice were in their place in the Throne Room.

His wife, Amy, his three children, his parents, Mr. and Mrs. Wilfred K. Richardson, and other members of his family watched proudly as he accepted his commission with brief remarks.

The actual swearing-in ceremony took place in the Judiciary Building across from Iolani Palace. It was a solemn

(Continued on page 8)





THE REV. NORMAN R. ALTER

## To Retire in July

The Reverend Norman R. Alter, Vicar of Christ Church, Kealahou, Hawaii, will retire in July. He has been in Hawaii since 1944, having come to Hawaii from Paris, Texas, in September 1944. He became Vicar of Holy Apostles Church, Hilo, Hawaii. He was also Archdeacon of Hawaii, until 1950, when he went to All Saints' Church, Kapaa, Kauai, and became Archdeacon of Kauai. In 1959 he became Vicar of Christ Church, Kealahou.

He and Mrs. Alter are building a home in the Kona area, where they will enjoy their retirement. They have a daughter and son-in-law in Hilo, Mr. and Mrs. Macy Wessell, and their children, so it will be a happy thing for them to be near enough to visit them, as well as to have the Wessell family in their home.

The Rev. Mr. Alter has endeared himself to all the congregations he has served. His presence in Kona will be a real help to the new priest, for he can assist him in many ways.

He was awarded the Bishop's Distinguished Service Cross in 1957 for outstanding leadership as a priest of the Diocese and the Diocesan Shield for devoted service.

We wish the Alters a very happy and rewarding retirement. We know that their many friends in Hawaii rejoice that they have decided to make Hawaii their home.

## St. Clement's MRI Project

St. Clement's Church, whose companion mission is Emmanuel Church, Enchanted Lake, has put this mission in its budget for \$100 a month, to be applied as a portion of the Vicar's salary now being paid by the Diocese and National Church. This is a tremendous help in freeing this amount for other programs in the Church.

## To Leave Guam

The Reverend Grosvenor M. Needham and his family will leave Guam in early June to return to the Diocese of Chicago, where he will take up new duties. The Needhams have been on Guam for the past six years and have wrought a good work while there.

They started a new school which has been providing a fine scholastic training for some 250 pupils. A new rectory and parish hall were built during their leadership.

They plan to stop in Honolulu for a brief visit before going on to Chicago. We know their many friends will welcome a visit with them. We send them forth with our warm Aloha and best wishes for rewarding service in their new work.

## Graduation Dates

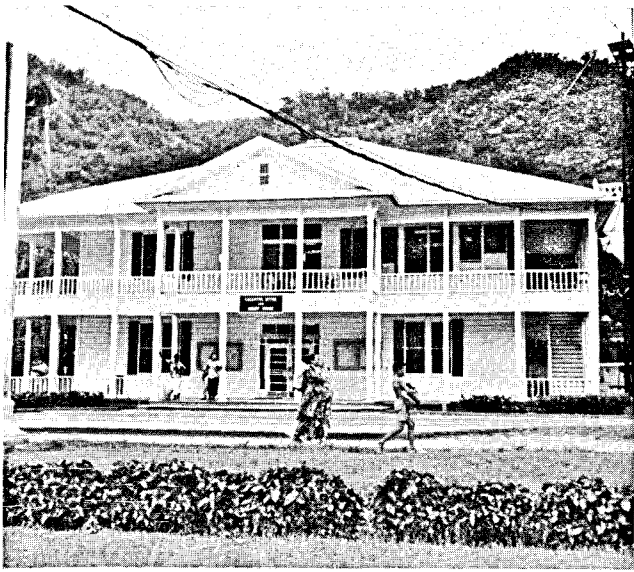
St. Andrew's Priory graduation will be on June 7th at 7:30 p.m. in St. Andrew's Cathedral. The Hawaii Preparatory Academy will be the morning of June 10th. Iolani School will have their exercises at 5 p.m. on June 14th in St. Alban's Chapel. Closing exercises for Seabury Hall will be Saturday, June 11th.

## New Clergy Assignments

We will have four men coming out of Seminary in June who will be assigned to posts in Hawaii.

Graduating from the Church Divinity School of the Pacific will be Robert E. Brown, who will go to Christ Church, Kealahou, on the Island of Hawaii. Charles S. Burger will go to the Island of Kauai where he will be in charge of St. Michael's and All Angels Mission, Lihue. The Reverend Thomas K. Yoshida, who has been in charge of this Mission under the Ven. Charles T. Crane, will go to Eleele, Kauai, to be Vicar of St. John's Church. The Reverend Richard S. O. Chang will come to Honolulu to be Assistant Rector of Holy Nativity Church, under the Reverend Jean B. Clark.

Mr. Charles G. Hopkins, who will graduate from Seabury-Western Theological Seminary, Evanston, Illinois, will be assigned to Christ Memorial Church, Kilauea, and St. Thomas' Mission, Hanalei, Kauai.



COURT HOUSE, PAGO PAGO, AMERICAN SAMOA

### Holy Week in Pago Pago, American Samoa

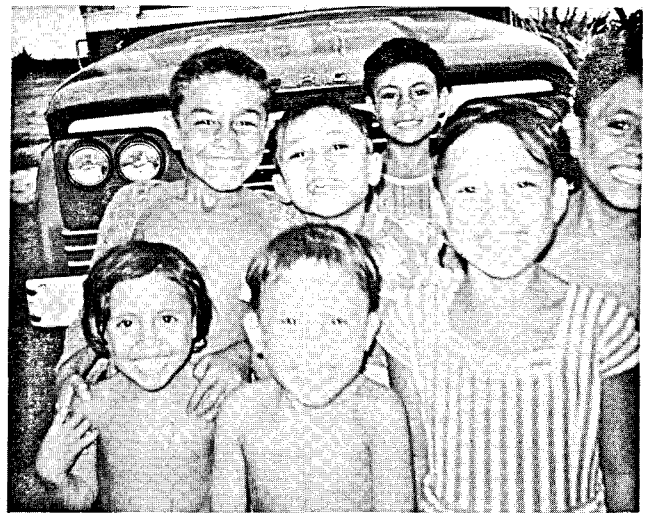
The Bishop spent Holy Week and Easter in American Samoa and Western Samoa. Services for English speaking Christians were held in the Court House and the hotel in Pago Pago, since we have no church building. Services were attended by members of many Christian Churches.

The Bishop flew from Pago Pago to Apia, Western Samoa (about forty-five minutes) and met with the Archdeacon Whonsbon-Aston, of Suva, Fiji, Diocese of Polynesia, who happened to be in Apia for the installation of the new Vicar, the Reverend Peter A. T. Rynd. The conference enabled them to talk over continuing plans to have the Vicar visit Pago Pago each month to give communion to our people. The Diocese of Polynesia for many years has kindly shared its Apia priest with us, since we have never had an American priest in residence.

The Church Committee of Pago Pago is very anxious to have a church building for English services. The Presbyterian and Episcopal Churches are working together on plans to build a church. The problem is land. We have not been successful in either leasing or purchasing a site, nor in getting a grant from the government.

Visiting clergy and lay readers take the Sunday services in the Court House. Communion services are usually held in the home of Mr. and Mrs. Blair MacKenzie in Pago Pago. Jet air service makes it much easier for us to have more services.

Some of our congregations in Hawaii have been helpful in supplying Prayer Books and Hymnals. If any of our



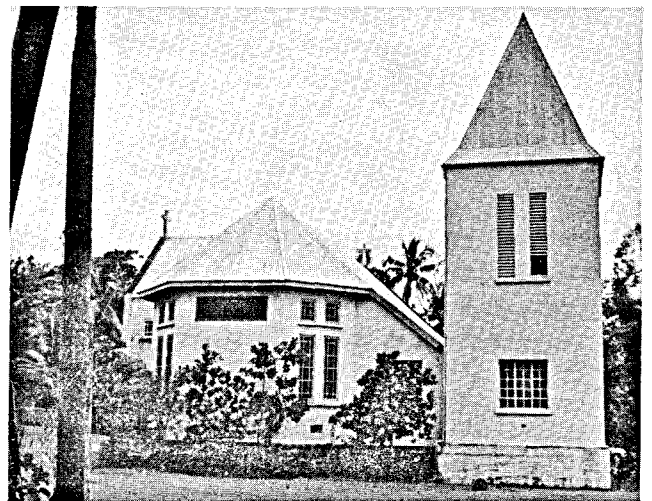
SAMOAN CHILDREN, PAGO PAGO

congregations have extra copies of either, we could use them in Pago Pago.

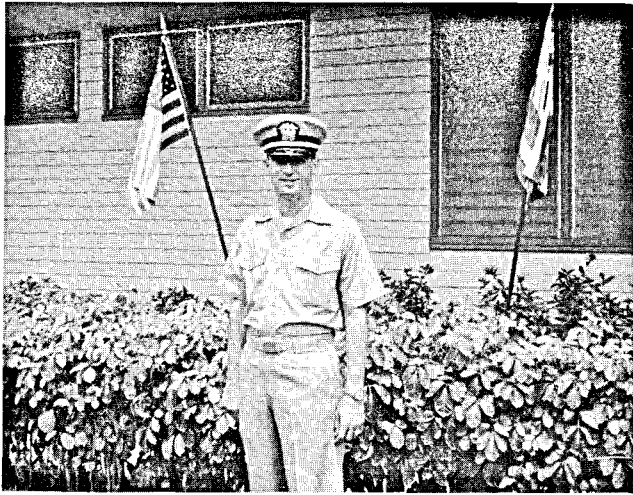
Pago Pago is five hours by jet from Honolulu. American Samoa has a population of 22,000. Western Samoa has 120,000 people.

While in Apia the Bishop was luncheon guest of Dr. and Mrs. Charles Judd, formerly with the Medical Group in Honolulu and now head of the Apia Hospital. The people of Western Samoa are indeed delighted to have this fine family in their midst, and grateful for the privilege of having such a fine surgeon to care for them.

The Bishop also had dinner in Pago Pago with Mr. and Mrs. Jack Tittle and their two children. Mrs. Tittle is the former Jean Aaron, of Honolulu, whose grandfather was the Rt. Rev. John D. La Mothe, fourth bishop of Honolulu.



ANGLICAN CHURCH, APIA, WESTERN SAMOA



CHAPLAIN (LT) Victor H. Krulak, Jr., who left the Monday after Easter to enter Chaplain's School for the Navy Chaplains, in Newport, Rhode Island. Following this he will be assigned to active duty.

## Canon Long Resigns

The Rev. Canon James G. Long, of St. Andrew's Cathedral, has resigned as of June 1st and will return to Seattle, where he will become Canon to the Ordinary for the Bishop of Olympia. He will have particular responsibility for Promotion and Christian Social Relations and be editor of the Olympia Churchman, a fine Diocesan newspaper.

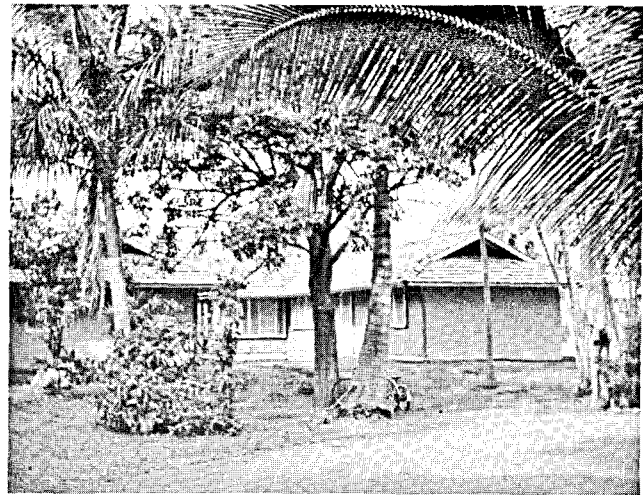
He has served at St. Andrew's Cathedral for the past three years. He was Chairman of the Department of Social Relations. His wife, Grace, has been teaching at Iolani School.

They have made many friends while here and will be greatly missed. We wish them well in their new work and send them forth with our sincere Aloha.

## News from Seabury Hall

September will see the addition of the twelfth grade at Seabury Hall. This means that new classrooms will be necessary in order to accommodate the additional students. A second floor will be added to the present classroom in order to conserve space. The new addition is being planned by Mr. Clifford Young, of East-West Center building fame, and a member of St. Peter's Church, Honolulu.

Two science rooms for general science, biology, chemistry and physics, rest room facilities for boys and girls and the present laundry on the bottom floor and standard classrooms on the second floor will be included in the new



NEW VICARAGE, HOLY INNOCENTS CHURCH, LAHAINA, MAUI

addition. Friends of the school on Maui have been generous in giving toward the building fund to make these changes. With the addition of students it means additional faculty will be required. This will entail faculty housing on the campus. This must also be finished by September.

\*\*\*

St. Paul's Chapel had its first Easter services. A new carpet with soft colors of green, brown and cream, has been laid. Women of the community have made needlepoint kneelers for the sanctuary. The design has been drawn from the pattern in the sliding windows at the side of the nave. The shield of St. Paul's opened book and sword is in the center with the motto, "Spiritus Gladius," "sword of the spirit." Fourteen are being made.

\*\*\*

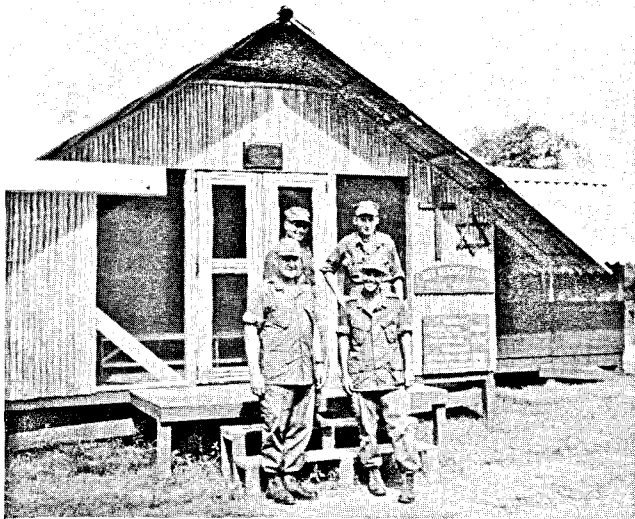
The Hawaii Preparatory Academy swimming team stopped on Maui for an afternoon of swimming, diving and water polo competition. They ended the day with dinner and dancing. Much fun for all.

\*\*\*

The Hakilo O Seabury (Seabury Snooper) has a new look after a year of publication. It is the school paper. Now it is being printed and will soon be able to enter contests with other school papers.

\*\*\*

The Headmaster, the Rev. Roger M. Melrose, surprised the girls with a Headmaster's Day, proclaiming the occasion so the entire school could go to Haleakala for a frolic in snow—seldom seen in Hawaii. Arriving soon after the road had been opened the girls were able to trample in snow untouched by human feet! Snowballs, snowman, shrieks of laughter made the occasion superb.



MEMORIAL CHAPEL in Viet Nam erected by our servicemen in their off hours as a memorial to their buddies who have died.

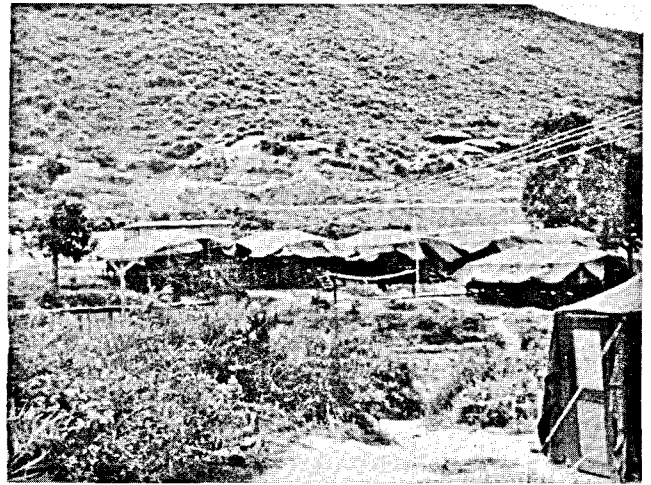
### Emmanuel's MRI Project in Viet Nam

The Reverend Frederick A. Barnhill, Vicar of Emmanuel Church, Enchanted Lake, advises us that his church has contacted Chaplain Peter D. MacLean, with the 9th Marines in Viet Nam of their MRI military project. Chaplain MacLean wrote to him, "Your letter came as a real joy and delight on a very hot day. . . . I hope my letter will reveal to you what we have to cope with to make this program work." He suggested two areas in which the church might help—helping to make friends and helping people to help themselves by providing packets of seeds—vegetables and flowers—and the other to provide sewing kits with needles, thread, snaps, buttons, etc. These are used in refugee camps with real effectiveness. The Church has started by sending 25 sewing kits, 25 Care school kits, and 200 packets of seeds.

Chaplain MacLean's last paragraph is most moving, "Now in the spirit of MRI . . . I have responsibilities to you. What can we do here that will happily sharpen the focus of your concern? This has to be a two way street, if it is going to work."

### MRI from the Diocese of Wyoming for Okinawa

The Diocese of Wyoming, under Bishop James Wilson Hunter, has raised \$2,093.45 to be used to build a modest parish hall for the Airaku-en Leper Colony which is so desperately needed. We are indeed grateful to the good Bishop and people of Wyoming for this generous and needed gift.



TYPICAL CAMPSITE OF AMERICAN FORCES IN VIET NAM

### South Pacific Anglican Council

There will be a meeting of the bishops of Melanesia, Polynesia, New Guinea, Carpentaria and Honolulu on May 7th to the 18th, at Suva, Fiji Islands. There will be priests and lay delegates as well.

At the request of our Overseas Department, the Bishop and Archdeacon Wheeler will represent Hawaii. This is the first time since the original meeting of South Pacific Bishops in Honolulu in 1946 that Hawaii has been able to send representatives.

Under consideration will be MRI Ecumenical Relationships, Middions, Personnel for Overseas fields, Theological Education in the Pacific, Evangelism in the South Pacific, Theological Colleges, Bible Translations and Development of Resources.



VIET NAM CHILDREN MAKE FRIENDS WITH AMERICANS



EPISCOPAL CHAPLAINS JACK HUNTLEY AND JOHN E. CLINE  
IN VIET NAM

## Priory Seniors Attend Dance on Chilean Naval Training Ship

The Chilean training ship 'Esmeralda' arrived in Pearl Harbor on April 26. Seniors from the Priory had been invited by the Commanding Officer to attend a reception and dance on board from 6 to 9 p.m. Naval officers and staff from Pearl Harbor acted as chaperones.

## Register Now for Camp!

Camps on Oahu will be as follows:

July 3-15—Grades 3-6

July 17-29—Grades 3-6

July 31 - August 12—Grades 7, 8 and 9.

On the Island of Maui the camp periods will be:

July 15-18—A family camp to be held at Seabury Hall with the Rev. Roger Melrose in charge

August 7-14: at Camp Pecusa—Grades 3 through 9th.

Last week in August and first week in September teenagers will be taken for a 3-day camp experience into Haleakala Crater.

## What Is a Church?

A building, a pulpit, an altar, a pew,  
A preacher, a neighbor, the many, the few.  
The organist, the acolyte, the usual, the odd.  
The hushed silence of people in the presence of God.  
A houseful of people, some young and some old.  
This is the church, or so I've been told.

—Margaret Calhoun

## Local Man Honored (Continued from page 3)

and touching one. The Bishop gave the invocation at the Palace.

Chief Justice Richardson is the second Chief Justice of the State and the first Democrat to head the judicial branch of government since statehood came in 1959.

## Your Pastor and Mine

If he is young, he lacks experience; if his hair is grey, he is too old.  
If he has five or six children, he has too many; if he has none, he is setting a bad example.  
If his wife sings in the choir, she is being too forward; if she doesn't, she is not interested in her husband's work.  
If he speaks from notes, he has "canned" sermons and is dry; if he speaks extemporaneously, he is not deep.  
If he spends too much time in his study, he neglects his people; if he visits, he is a gad-about.  
If he is attentive to the poor, he is playing to the grandstand; if to the wealthy, he is trying to be an aristocrat.  
If he suggests improvements for the church, he is a dictator; if he makes no suggestions, he is a figurehead.  
If he uses too many illustrations, he neglects the Bible; if not enough, he is not clear.  
If he condemns wrong, he is cranky; if he does not, he is a compromiser.  
If he preaches an hour, he is windy! if less, he is lazy.  
If he preaches the truth, he is offensive; if not he is a hypocrite.  
If he fails to please everybody, he is hurting the church; if he does please everybody, he has no convictions.  
If he preaches to tithe, he is a money-grabber; if he does not, he is failing to develop his people.  
If he receives a large salary, he is mercenary; if a small salary, it proves he isn't worth much.  
If he preaches all the time, the people get tired of hearing one man; if he invites guest preachers, he is shirking responsibility.  
Yet they say the preacher has an easy time!

—M. E. Kettering  
The Church News

## Thought for Today

"Four things alone support the world; the learning of the wise, the justice of the great, the prayers of the righteous, and the valor of the brave."—Arab proverb

## Hawaiian Church Chronicle

SUCCESSOR TO THE ANGLICAN CHURCH CHRONICLE

Official organ of the Missionary District of Honolulu of the Protestant Episcopal Church in the United States

Entered as second-class matter February 14, 1908, at the post office at Honolulu, Hawaii, under the Act of March 3, 1879.

THE RT. REV. HARRY S. KENNEDY, D.D., S.T.D., EDITOR  
KATHERINE M. MORTON,  
ASSISTANT EDITOR

THE HAWAIIAN CHURCH CHRONICLE is published once in each month, except July and August. The subscription price is One Dollar a year. Remittances, orders and other business communications should be addressed to Bishop's Office, Queen Emma Square, Honolulu, Hawaii 96813.