



Hawaiian Church Chronicle

HAWAIIAN UNIVERSITY OF HAWAII LIBRARY

JUN 4 '65



VOL. 55, NO. 5

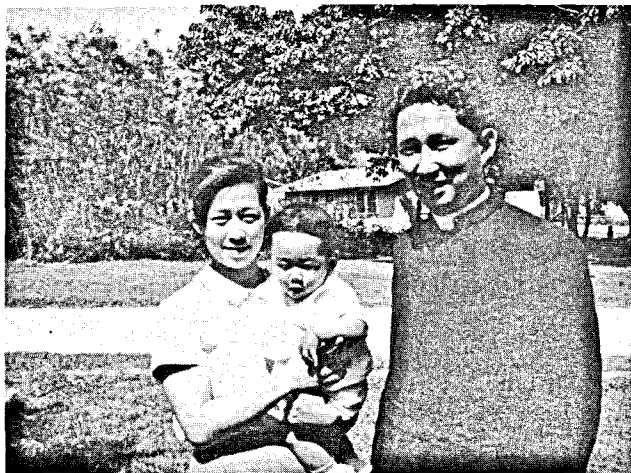
EPISCOPAL CHURCH IN HAWAII

MAY • 1965



HONOLULU TOUR—Young people from St. Thomas Chapel of Hanalei, Christ Memorial Church of Kilauea, All Saints' Church of Kapaa, St. John's Church of Eleele and St. Paul's Church of Kekaha made up the Kauai Episcopal Youth Safari which left Sunday for a four-day Honolulu tour. The group, accompanied by adults the Rev. and Mrs. Thomas K. Yoshida and Mrs. Michael Kikugawa of Kalaheo, will include visits to the State Hi-Y Model Legislature, the Governor's reception, St. Andrew's Cathedral, St. Andrew's Priory, Ulu Mau Village, the movie "My Fair Lady," Canterbury House, Episcopal College Center, the University of Hawaii, and a possible skating party. The youths were guests at the Diocesan House at St. Andrew's Cathedral. They were also accompanied by Miss Gladys Tasaka.

LOSE
HELV



The Reverend Isaac Gonzales, his wife and infant son.



Confirmation Class—Chi Chi Jima—presented by the Reverend Isaac Gonzales.

First Visit in Thirty Years

The Bishop recently visited Chi Chi Jima, in the Bonin Islands. It was the first visit of a bishop in over thirty years.

Chi Chi Jima in English means "Father Island." It is the largest island in the Bonin group. It was settled on many years ago by some whalers who were shipwrecked in this area.

Before the war the Church was under the jurisdiction of the Nippon Seikokai. For the past few years the American Church, under the Bishop of Honolulu, has been in charge. We have placed the Reverend Isaac Gonzales, a graduate of St. Paul's University and the Central Theological Seminary of Tokyo, in charge of the mission. He was born on the island.

Most of the men on the island speak English, but their wives are from Japan and therefore resort mostly to the Japanese language.

Father Gonzales is married and has an infant son. He presented 18 for confirmation. Services were held in an old Quonset Hut of World War II days, and has reached such a state of needed repair that little can be done to improve it.

Chi Chi is a beautiful island about 800 miles north of Guam. The only means of transportation is by amphibious plane of the United States navy, which takes about 6½ hours flight time over water. The return flight is much longer since a re-fuelling stop must be made on the Island of Iwo Jima. Landing and the take-off must be made in the harbor, which is flanked by mountains. The natives place smoke pots out in the middle of the harbor when they know a plane is coming. This gives the pilot the direction of the wind. However, he must circle the

island two or three times, flying very low when he comes over the harbor, in order to learn the direction of the ocean currents for a safe landing. Since there is no air-strip to take off on from this small harbor JATO tanks are attached to the side of the plane. These are known as Jet Assist Take Off. They are used to give the necessary thrust to the amphibious plane to get it over the mountains on the takeoff.

Most of the natives are fishermen; others work for the United States Navy Installations. The four whalers who originally landed there were: Washington, Webb, Savory



The coast of Chi Chi Jima.

and Gilley, so today all the inhabitants are descendents of these four families.

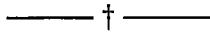
Since it is a United States Navy Installation admission to the island is restricted.

This wonderful young missionary priest and his family are making a tremendous impression upon the people on the island. We are very anxious that a chapel might be built and also hope that we may find some friends who will help us purchase a jeep for the priest.

St. George's Mission is the name given to the church. We have already sent them supplies such as hymnals and prayer books.

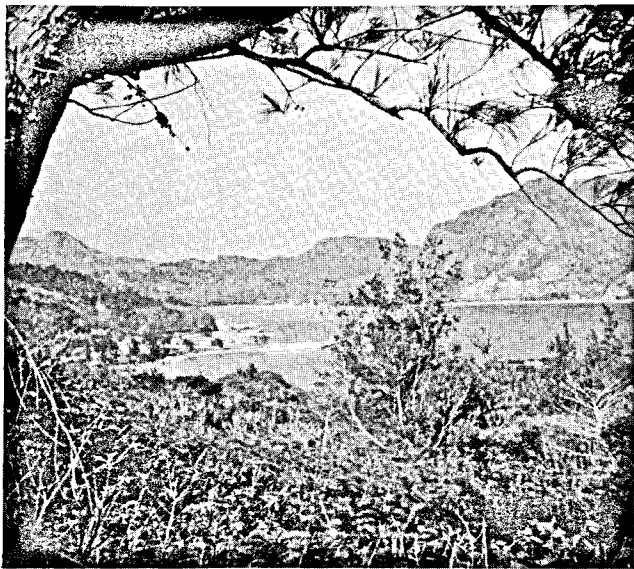
His salary is paid by the Overseas Department of the Executive Council.

Father Gonzales' grandfather was a priest and started the work of the Church in the Bonin Islands. He was the son of a Portuguese father and Hawaiian mother, and married a Japanese.

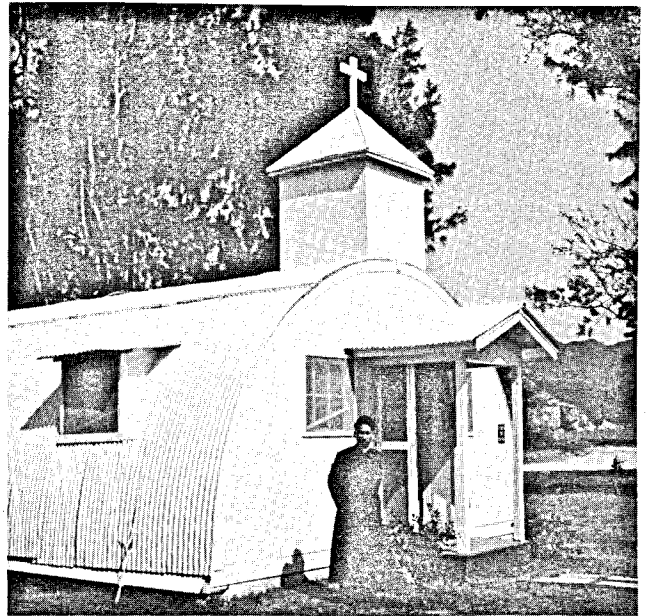


Double Easter

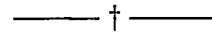
It is most unusual to have two Easters, but on Sunday, April 18th, the Bishop was on the Island of Guam where he had an Easter Sunrise service for the United States Air Force. Later he had two confirmation services—one for the Reverend Grosvenor M. Needham, Vicar of St. John the Divine Church, Agana, where he confirmed 12, and the other for Chaplain Alfred Alley, at Anderson Air Base, where he confirmed 13. He had a preaching service and the dedication of the new school building at St. John's, and presided at the annual Bishop's Committee meeting.



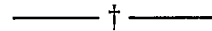
Chi Chi Jima Harbor.



St. George's Chapel, Chi Chi Jima, Bonin Islands. The Reverend Isaac Gonzales standing by the entrance.

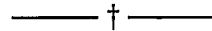


He took an 8 p.m. Pan American flight out of Guam for Honolulu, crossing the International Date Line at Wake Island, so arrived at 7:30 a.m. on his second Easter, April 18th, in Honolulu, where he was able to have Easter services.



Korea

In Korea the Bishop was able to spend a week going up and down the country in a helicopter. He visited with all the chaplains, especially with Bruce Williams, John M. Evans, and Bishop John Daly, Bishop in Korea. During his visit the Bishop held services for the military forces and also the American civilians in St. Mary's and St. Nicholas Cathedral, Seoul.



Vietnam

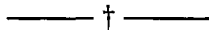
The Bishop was able to spend a week in Vietnam visiting our American troops and military installations up and down South Vietnam. He was able to have confirmations for the following Chaplains: Calvin Croston, Mark C. Gasquet, James E. Flinn, and John Walker.

Confirmation services were held for the American and British congregations in St. Christopher's Mission, Saigon, with the Reverend Theodore Evans as Vicar. These services are held in a French Protestant Church, which is rented to the Anglican Church for services.

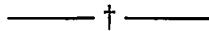
The Bishop was able to visit with many of our service



The Reverend Manu Bennett, of New Zealand, who served at Holy Nativity Church in 1953-1954 as an assistant. The Bishop and Mrs. Kennedy had the joy of seeing him when they were at Christchurch, New Zealand. He travels over the country serving as a chaplain in prisons.

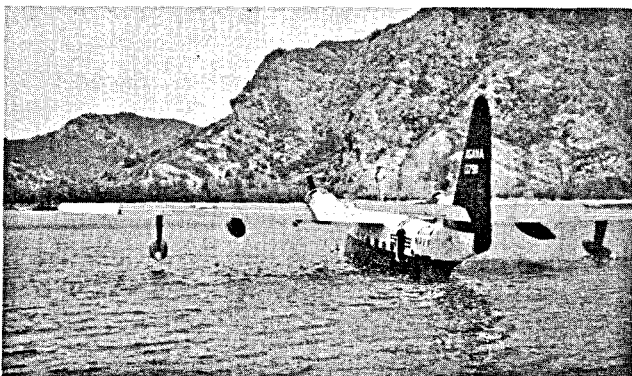


men, who are communicants of the Church from all over the world. We should keep them and our people in our prayers—not only our military forces, but American civilians who work either in the Embassy or for other agencies.



In Appreciation

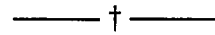
Mr. Kenneth Day, a life member of St. Andrew's Cathedral, Honolulu, has joined the happy ranks of those retired. He was for many years a member of the choir at the Cathedral, Junior Warden and Senior Warden, and always a very hard worker in any of the activities that took place. He and Mrs. Day are now living in the Queen Emma Tower Apartments near the Cathedral. He has very graciously taken over the mailing procedure of the Hawaiian Church Chronicle—keeping the files up to date and addressing the envelopes. This is no small task and we feel deeply indebted to him for giving of his time and effort to do this.



Amphibious plane that is the means of transportation from Guam to Chi Chi Jima, Bonin Islands.

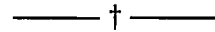
Oahu Clericus Elect New Officers

The Rev. B. Jean Clerk, Rector of Holy Nativity Church, Honolulu was elected President for the coming year. The Rev. Morimasa Kaneshiro, Vicar of St. Mary's Church, was elected Vice-President and The Rev. Stanley Adams, Vicar of the Waikiki Chapel, Secretary.



Working Together—Parochial Missions

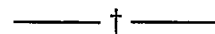
The second team of churches and clergy in Honolulu is that of Holy Nativity Church and St. Matthew's Church, Waimanalo. The Rev. B. Jean Clark, the Rev. Fred G. Minuth, Associate of Holy Nativity Church, and the Rev. Guy Piltz, Vicar of St. Matthew's Church, will work as a team with both churches. St. Peter's Church was the first to do this with St. John's-by-the-Sea, Kahaluu, Oahu and Holy Cross, Kahuku. The Rev. E. Lani Hanchett, Rector of St. Peter's Church, the Rev. Thomas Heimann, Associate, and the Rev. Victor H. Krulak, Jr. of St. John's and Holy Cross, are working together.



25th Ordination Celebration

The Reverend Paul M. Wheeler, D.D., Rector of St. Clement's Church, Honolulu, celebrated his 25th anniversary of his ordination as priest of the Church on Sunday, May 16th. The Bishop had a service of confirmation in the Church, with prayers of thanksgiving for the ministry of Dr. Wheeler, at 6 p.m.

Following the eleven o'clock service in the morning the congregation presented Dr. Wheeler with a very lovely stereo set and had a reception following this.



Mutual Responsibility in Hawaii

The Bishop has reminded us that although Hawaii has not been oblivious to the mutual responsibility we have in doing for others in Hawaii, we still must keep a close vigil and seek out other avenues of approach.

These are some of the ways in which we have tried to help others:

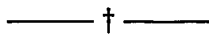
Sent the Reverend Darrow Aiona to New Zealand. Received two Philippine Independent Church priests—the Reverend Timoteo Quintero and Jacinto Tabili—to work in Hawaii. The Reverend John Liu, Chinese, has been sent to Taiwan. We have our Suffragan Bishop—The Rt.

Rev. Charles P. Gilson—in residence in Okinawa. In Okinawa we are supporting an orphanage for the children of leper parents in Miyako. We have also supported the work at the leper colony at Airaku-en.

In Taiwan we are lending one of our clergy to teach at the theological seminary, the Rev. Peyton Craighill. Two young men from the Philippines came here some years ago to enter Iolani School and the University of Hawaii—Barnabas Panod and Thomas Linguayo. The former is teaching his people in the Philippines, the latter is an ordained priest serving there. A young Japanese was also sponsored here and has just recently gone to Okinawa where he is assisting our mission. He is Kimitaka Yotomoto. One of our priests, Paul Kennedy, has gone to Guatemala to serve in that mission field. The Rev. Stephen Kim, one of our priests, is teaching in St. Michael's Theological Seminary, Korea.

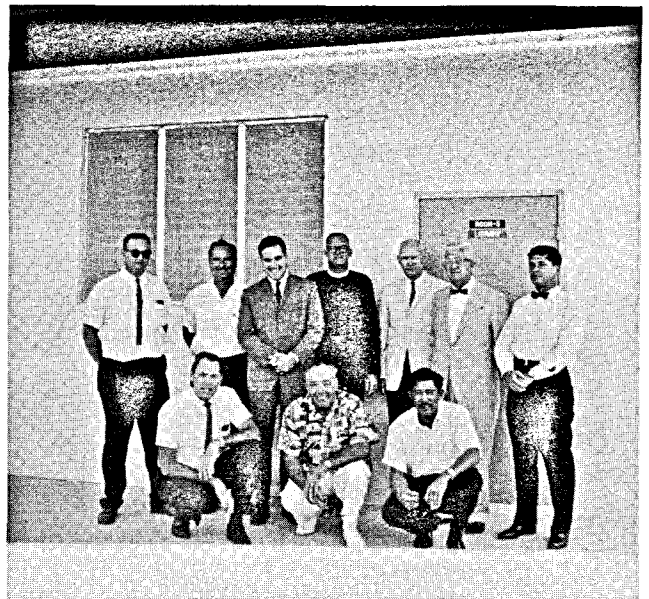
The Bishop of Polynesia was aided with his work in Tonga with a cash gift. The Rev. Isaac Gonzales is now doing work in Chi Chi Jima. The Rev. John P. Engelcke has been taking services on Kwajalein. The Rev. Bruce Kennedy was sent to Mexico.

It is far from adequate, but at least we have felt it necessary to be responsible for others and know that the way will be shown us to go further afield.

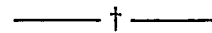


Guatemala, MRI, and the Bishop's Wife

MRI, as you know, stands for Mutual Responsibility and Interdependence in the Body of Christ. In other words, it is a call to look out of and away from ourselves. It also means sharing. As a first and faltering step in this not so new idea with a new title, we at St. Barnabas' have taken on as a major concern and effort, the work of our Church at Lake Izabel, Guatemala. Interest in this area rose rapidly when our Bishop's wife, Katharine Kennedy, spoke at the women's luncheon about her trip to Lake Izabel. This interest was conveyed to the Bishop's Committee, and through the efforts of Joan Malvin correspondence was begun with our vicar's brother, The Rev. Paul S. Kennedy, who is one of the two priests in charge of the work there. The result was that St. Barnabas' has taken on PROJECT "L.I.F.E." (Lake Izabel Farming and Educational Project), as it is called, as our special interest. One of the great needs there, was an endowment for the salary of Mr. Silvestre Romero, one of their teachers. Mr. Romero's salary is \$60.00 a month (next year \$70). St. Barnabas' has agreed to pay this salary, and we hope

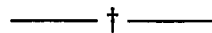


The Bishop's Committee of St. John-the-Divine Church, Agana, Guam, shown with their Vicar, the Reverend Grosvenor M. Needham.



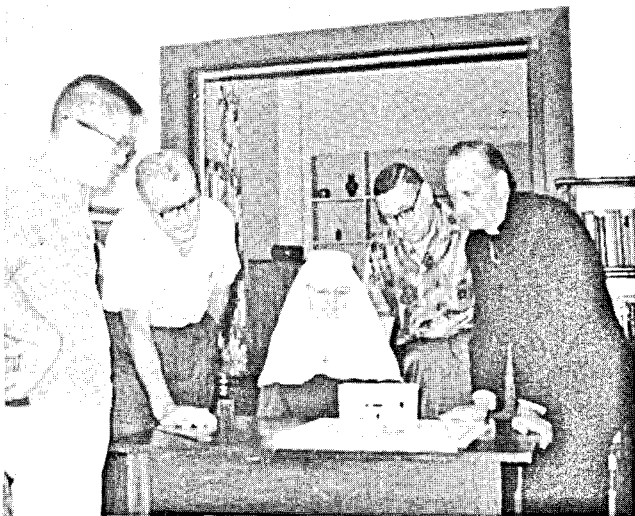
to be in continuing correspondence with Mr. Romero in order that we can follow his work and the work of the rest of PROJECT "L.I.F.E."

The intention of the Bishop's Committee is to give everyone in our congregation the opportunity to give to this important and needy work as they are able and are interested. Therefore we will be having a "kick-off" on May 23rd at the 10 o'clock service. The Bishop's wife will speak to the congregation about the work in Guatemala. We hope to eventually have pictures, newsletters and other items of interest. Special envelopes will be distributed monthly in our bulletin—and we will run a monthly column to bring everyone up to date on the latest news from Mr. Romero and PROJECT "L.I.F.E." TRY TO BE AT THE "KICK-OFF" ON MAY 23rd.—From the St. Barnabas' Ka Hana Maikai (The Good Deed), Ewa Beach, Oahu.

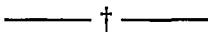


Sisters of Transfiguration Visit Molokai

Sister Evelyn Ancilla, Superior Sister of the Transfiguration Order at St. Andrew's Priory, was accompanied by Sister Laura Mary, for a three day visit to Grace Church, Molokai. Sister Evelyn spoke on Friday and Saturday nights on the place of Christian women in the world today. On Sunday morning she spoke on a subject of general interest to all.



Mr. Hideo Kobayashi, architect for the new proposed Student Center for St. Andrew's Priory School for Girls, Honolulu, Mr. Henry F. Budd, Diocesan Treasurer, Sister Evelyn Ancilla, Community of the Transfiguration, Mr. Edward E. Hedgecock, Business Administrator of the Priory, and Bishop Kennedy look at the model of the building.



To Okinawa

In an effort to express the Mutual Responsibility that we feel for our work in Okinawa, the Venerable Charles T. Crane, Archdeacon of Kauai and Rector of All Saints Church, Kapaa, and St. Michael's and All Angels, Lihue, will leave on May 23rd for Okinawa to see our work in action there. He will be met by Mrs. Thomas Brodhead, President of the Episcopal Churchwomen in Hawaii, and her husband, who are touring in the Far East.

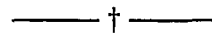
They hope to see first-hand the work that is being accomplished by our Suffragan Bishop, the Rt. Rev. Charles P. Gilson, and his staff of missionaries. They will compile a list of things that we might do for Okinawa—not projects, but areas of concern in which we might make a contribution. They hope also to see what WE might receive from Okinawa and the Philippines. Especially are they interested in what we can do in Hawaii for the Philippine Independent Church in Hawaii.

They wish to gain an acquaintance with our missions, the clergy and to try to find out what the real similarities and differences of approach are in order that we may more effectively cooperate in Hawaii.

The team will make themselves available as resource people as needed in the months and years ahead in order that our concern for Okinawa may be perpetuated and maintained.



Good Shepherd Church, Wailuku, Maui, Dedication Service for new Christian Education Building, May 16, 1965.



Up We Go

Any school can have ground-breaking ceremonies . . . but it takes CONVICTION to raise the roof!!!

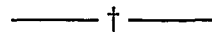
**THE PRIORY IS GOING TO DO BOTH
ON ASCENSION DAY MAY 27, 1965**

On this historical Founders Day, St. Andrew's Priory will start its expansion building program . . . breaking ground for the new Gymnasium and Student Services Center . . . also raising the roof of Sellon Hall in order to construct six (6) new classrooms on a second floor.

THE EXPANSION PROGRAM CEREMONIES WILL BE HELD OUTSIDE THE DIOCESAN OFFICES AT 10:00 A.M.—FOLLOWING THE FOUNDERS DAY SERVICE TRADITIONALLY HELD EVERY YEAR AT THE CORAL CROSS IN THE PRIORY COURTYARD.

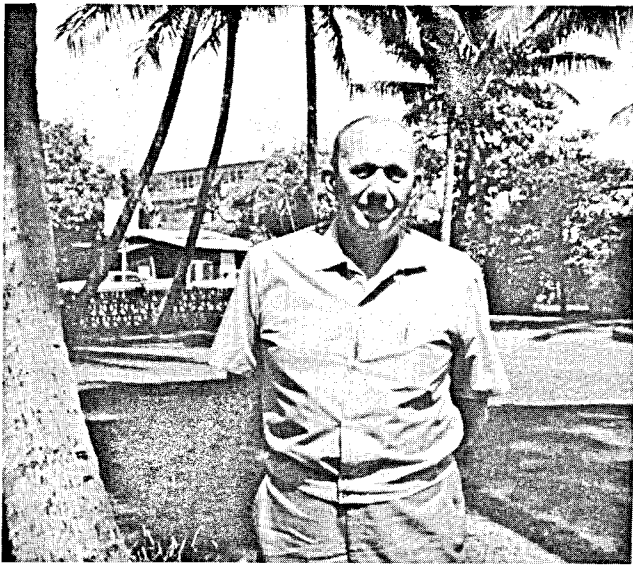
Members of the St. Andrew's Priory Alumnae Association, "Hostesses for the Day," will serve the refreshments under the ylang-ylang tree . . . Students in their white uniforms will welcome parents, guests and friends to this memorable occasion.

**YOUR PLEDGES MADE IT POSSIBLE
COME AND JOIN THE CELEBRATION!!!**

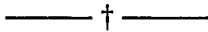


St. Barnabas' Church Acquired New Land

After several years of searching, hoping and praying, St. Barnabas' Church has finally acquired some new land. Six and one-half acres were purchased by the Diocese from the General Services Administration. Resale of some of this property will be made. Growth in the Ewa Beach area necessitates caring for the people there. Vicar is the Reverend David K. Kennedy.



A devout Lay Reader passed through Honolulu recently—Karl F. Koehler. He is from the Diocese of New Jersey and was licensed by our Bishop to serve as a Lay Reader on Kwajalein, where four lay readers conduct services for our church members. The Reverend John P. Englecke will go to Kwajalein on May 26th to have services.



Maori Group to Visit Us

A group of young Maoris from Wellington, New Zealand—numbering 15—will be in Honolulu on Sunday, June 13th. They are on a trip around the world to give performances of Maori songs and dances. They will be in Honolulu only one day.

They are a group from the Wellington Anglican Church, under the direction of the Reverend Wangi M Ihaka. Here are our plans for them:

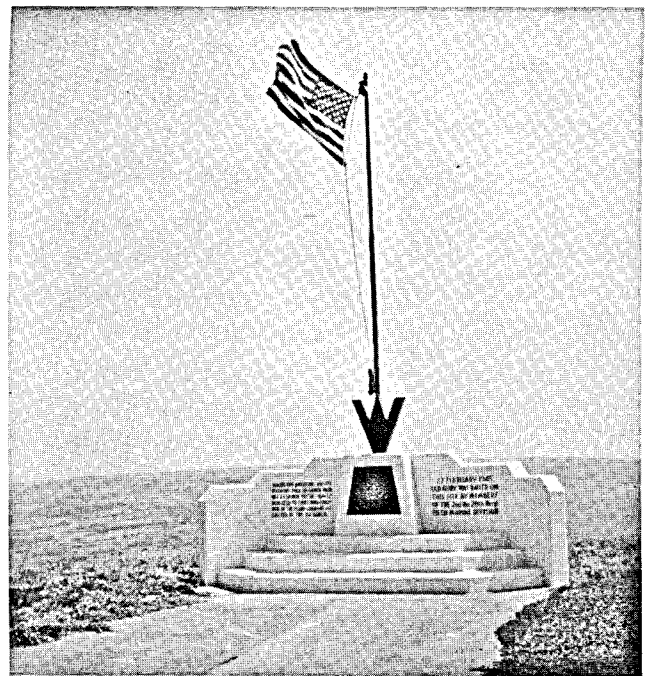
We will have a Lau Lau supper at Holy Nativity Youth Center at 6:30 p.m. The cost will be \$1.00. This will give the Maori people an opportunity to visit with our own Church people.

They will present their program in the Youth Center at 7:30 p.m. The public is invited.

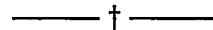
The Reverend Guy H. Piltz, of St. Matthew's Church and Director of Youth for the Diocese, will be in charge of arrangements.

They will be leaving for San Francisco on Monday morning.

The Rt. Rev. Harry Baines, Bishop of Wellington, New Zealand, is anxious to have everything possible done to assist this group, since Hawaii will be their first stop and official performance, on their long journey. This group recently won a prize for being the outstanding group of singers and dancers in Wellington.



Monument of Sarabachi, Iwo Jima—where the famous photograph was taken of the flag raising during World War II.



1965 Annual Reports Gains and Losses

The Episcopal Church in the U.S.A. today numbers 3,591,164 baptized members including 2,245,782 communicants. The Sunday Schools of the Church show today there are 916,656 pupils, taught by 104,846 officers and teachers. The total number of clergy in the Church—bishops, priests, and deacons is 9,978. A growing number of clergy are listed in nonparochial positions or retired. Only about 75 per cent of the clergy are engaged in the full-time parochial ministry. There are 16,344 lay readers.

Clifford Morehouse, editor of the *Annual*, quotes some significant questions from the report of the Committee on the State of the Church:

The Episcopal Church has 201 bishops, including 42 who have resigned or retired. It is organized into eight provinces (a ninth in formation) consisting of 87 diocese and missionary districts in continental United States, with 17 extra-continental and overseas missionary districts. It is a part of the Anglican Communion which includes the Church of England and eighteen other national churches and provinces with a total membership of 43,000,000. The Archbishop of Canterbury is recognized as the titular head of the Anglican Communion, but each national Church has its own independent government and organization, and its own version of *The Book of Common Prayer*.

ECAP Receipts Continue to Roll In

As shown in the statement below, many of our parishes and missions are trying to make the 100% column. HOW ABOUT YOUR CHURCH???? There is work still to be

done and we are counting on ECAP to help get the job finished.! Let's all try to be 100%ers.

EPISCOPAL CENTENNIAL ADVANCE PROGRAM As of May 11, 1965

Parish or Mission	Pledged	P A I D		Balance Due
		100% or more	Amount Pd	
St Andrew's Cathedral	\$203,676.44		\$161,929.56*	\$ 41,746.88*
St Clement's	75,334.30		67,606.49	7,727.81
St Peter's	25,459.68		23,786.68	1,673.00
St Elizabeth's	27,489.50		15,423.62	12,065.88
St Christopher's	24,000.00	\$ 24,000.00		-0-
Good Shepherd	12,841.00	12,994.99		-0-
Holy Nativity	79,878.00		75,023.06	4,854.94
Epiphany	17,176.00		9,162.06	8,013.94
St Mark's	12,500.00	12,500.00		-0-
All Saints'	17,909.00	17,909.00		-0-
Calvary	13,362.25		8,614.35	4,747.90
Emmanuel	1,500.00	1,500.00		-0-
Good Samaritan	7,931.00	7,931.00		-0-
Holy Cross	2,565.00		2,357.00	208.00
Holy Trinity	9,556.00		7,312.50	2,243.50
St Alban's	4,465.00		4,364.20	100.80
St Barnabas'	3,324.00	3,324.00		-0-
St John's By-the Sea	7,104.00		3,721.35	3,382.65
St Luke's	7,728.00		6,878.00	850.00
St Mary's	10,690.00	10,690.00		-0-
St Matthew's	8,355.00		4,102.00	4,253.00
St Stephen's	10,951.00	10,951.00		-0-
St George's	9,868.00		5,033.90	4,834.10
St Timothy's	9,169.00		6,706.58	2,462.42
St Philip's	3,345.00	3,345.00		-0-
Christ Church, Kona	13,116.00	13,116.00		-0-
Holy Apostles	10,405.00		8,338.61	2,066.39
Kohala Missions	6,425.00		5,199.23	1,225.77
St James', Kamuela	6,532.00		3,716.50	2,815.50
St James', Papaaloa	1,755.00	1,786.00		-0-
St Columbas'	3,762.00	3,762.00		-0-
Christ Church, Kilauea	5,184.00	5,204.00		-0-
St Thomas	2,835.00	2,835.00		-0-
St Paul's, Kekaha	4,167.00		3,799.00	368.00
St John's, Eleele	9,001.00		8,571.97	429.03
St John's, Kula	10,709.68		10,033.02	676.66
Holy Innocent's	8,139.00		7,213.00	926.00
Grace	3,492.93		3,293.93	199.00
Iolani School	300.00	300.00		-0-
St Andrew's Priory	1,023.00	1,023.00		-0-
St John the Divine, Guam	484.00	484.00		-0-
Miscellaneous	21,237.98		21,237.98	-0-
	\$714,745.76	\$133,654.99	\$473,424.59	\$107,871.17

* Does not include land valued at \$30,000 included in pledge but not receipts.

Some Christians are like wheelbarrows—no good unless pushed;
Some are like kites—if you don't keep a string on them they fly away!
Some are like kittens—they are more contented when petted;
Some are like balloons—full of wind and ready to blow up;
Some are like neon signs—they keep going on and off;
Some are like a good watch—open face, pure gold, quietly busy and full of good works.

Hawaiian Church Chronicle

SUCCESSOR TO THE ANGLICAN CHURCH CHRONICLE

Official organ of the Missionary District of Honolulu of the Protestant Episcopal Church in the United States

Entered as second-class matter February 14, 1908, at the post office at Honolulu, Hawaii, under the Act of March 3, 1879.

THE RT. REV. HARRY S. KENNEDY, D.D., S.T.D., EDITOR
KATHERINE M. MORTON,
ASSISTANT EDITOR

THE HAWAIIAN CHURCH CHRONICLE is published once in each month, except July and August. The subscription price is One Dollar a year. Remittances, orders and other business communications should be addressed to Bishop's Office, Queen Emma Square, Honolulu, Hawaii 96813.