

# Hawaiian Church Chronicle

*"For Christ and His Church"*

THE RT. REV. S. HARRINGTON LITTELL, D.D., S.T.D., *Editor*

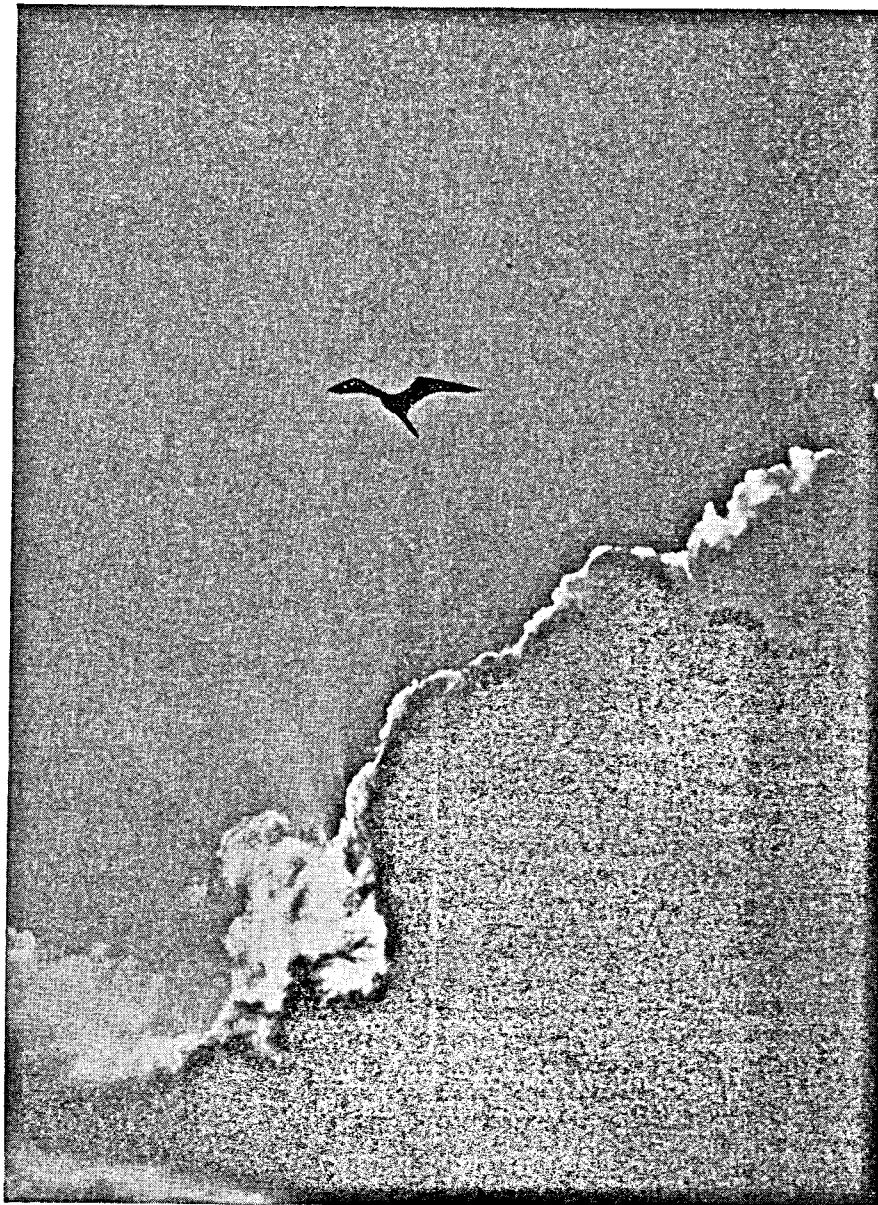
MRS. ROBERT T. AITKEN, *Assistant Editor*

Entered as second-class matter February 14, 1908, at the post office at Honolulu, Hawaii, under the Act of March 3, 1879.

VOL. XXXI.

HONOLULU, HAWAII, NOVEMBER, 1941

No. 8



IOLANI . . . "The lofty flight of a mythical bird seeking freedom."

## Hawaiian Church Chronicle

Successor to the Anglican Church Chronicle

THE RT. REV. S. HARRINGTON LITTELL, D.D.,  
S.T.D., Editor

MRS. ROBERT T. AITKEN, Assistant Editor

THE HAWAIIAN CHURCH CHRONICLE is published once in each month. The subscription price is One Dollar a year. Remittances, orders and other business communications should be addressed to T. J. Hollander, 222-B Queen Emma Square, Honolulu. News items or other matter may be sent to the Rt. Rev. S. Harrington Littell, S.T.D., Queen Emma Square, Honolulu.

Advertising rates made known upon application.  
Subscriptions will run until discontinued.

### CALENDAR

November 1—All Saints' Day  
November 2—21st Sunday after Trinity  
November 9—22nd Sunday after Trinity  
November 16—23rd Sunday after Trinity  
November 20—Thanksgiving Day  
November 23—Sunday next before Advent  
November 30—1st Sunday in Advent  
St. Andrew  
December 7—2nd Sunday in Advent

### ARCHDEACON BROWN

"To the Rev. E. Tanner Brown, D.D.,  
Rector of St. Clement's Church, Honolulu, T. H.

My dear Dr. Brown:

Following our conversation this morning, it is with full confidence and unusual satisfaction that I hereby officially appoint you Archdeacon of Honolulu, with jurisdiction in the Missions of the Church on the Island of Oahu.

This appointment is in part a sharing of the advisory, and to some extent administrative duties with the Bishop, as may be assigned from time to time, and also is a well deserved recognition of the missionary spirit and usefulness which you have shown in your ten years in Honolulu. The Church throughout the Islands, no less than the community in which you have made an important place for yourself, will recognize with deep satisfaction the appropriateness and the worthiness of your appointment as Archdeacon of Honolulu.

Faithfully yours,  
(s) S. Harrington Littell,  
Bishop of Honolulu."

The Archdeacon has accepted this appointment as of October 20th, and in so doing has given general satisfaction.

### DIOCESAN WOMAN'S AUXILIARY

During the summer it was suggested that the diocesan Woman's Auxiliary develop discussion groups for our women who are interested in the field of education and religion in early childhood. We call your attention to the programs of the Association for Childhood Education for

### I THANK MY GOD—

Because in tender majesty,  
Thou can'st to earth nor stayed till we  
Poor sinners stumbled up to Thee,  
I thank my God.

Because the Saviour of us all  
Lay with the cattle in their stall,  
Because the Great comes to the small,  
I thank my God.

Because upon a Mother's breast  
The Lord of Life was laid to rest,  
And was of Babes the loveliest,  
I thank my God.

Because the Eternal Infinite,  
Was once that naked little mite,  
Because, O Love, of Christmas night,  
I thank my God.  
—G. A. Studdert-Kennedy.

### A Dialogue:

Barnes: Astronomically speaking, man is infinitesimal.

Coe: Astronomically speaking, man is the astronomer.

this coming year. Members of the Auxiliary who are interested in these topics are invited to attend the monthly meetings.

The theme for the year is "The Needs of Young Children in the Present World Situation". The following tentative program has been set:

November: Explaining the Present World Situation to Young Children.

January: Mental Hygiene for the Youngest in a World at War.

February: Conflicting Disciplines in the World Today and their Effect on Young Children.

March: Keeping Children Physically Fit in a World of War.

April: Provision for Cultural Experiences in Art, Music, etc., in spite of the Present World Situation.

With the opening of the new University Pre-school and the coming of experts along the line of young childhood development, we should use this opportunity to develop Christian work for our younger children.

Information concerning these meetings may be obtained from Miss Mary Musgrove, 541 Kawaiahao St., or from the Education Secretary of the Woman's Auxiliary, Mrs. Donald Roberts, at St. Andrew's Priory. Notices of the meetings are given in the daily papers.

### THANK GOD!

Thank God for life!  
E'en though it bring much bitterness and strife,  
And all our fairest hopes be wrecked and lost,  
E'en though there be more ill than good in life,  
We cling to life and reckon not the cost.  
Thank God for life!

Thank God for love!  
For though sometimes grief follows in its wake,  
Still we forget love's sorrow in love's joy,  
And cherish tears with smiles for love's dear sake;  
Only in heaven is bliss without alloy.  
Thank God for love!

And new vistas opening ahead;  
For new hope and new inspiration,  
New national awakening, and new desire to serve our time and our country.

We thank Thee that, to those who love Thee,  
The best is ever yet to be:  
That, if we abide in Thee, we can never grow old,  
For Thou, our Master, art eternally young,  
Eternally radiant with the joyful energy, the freshness and buoyancy of youth.

We thank Thee for the sacred elixir of Thy Spirit,  
Which wardeth forever from those who love Thee  
All weariness of soul, all carking anxiety,  
All discouragement in failure,  
All old age of the soul.

—From Prayers for Use in an Indian College.

### Williams Mortuary, Ltd.

To be served by  
"WILLIAMS"

is a mark of distinction.

Personal Attention By An  
Expert Staff of Assistants

Twenty-Four Hour Service

1076 S. Beretania Phone 3524

## THE LINCOLN NATIONAL LIFE INSURANCE COMPANY

FORT WAYNE

INDIANA

EDUCATIONAL — INCOME — PROTECTION

THEO. H. DAVIES & COMPANY, LIMITED  
TERRITORIAL AGENTS

# Hawaiian Church Chronicle

*Devoted to the interests of the Missionary District of Honolulu*

Vol. XXXI.

HONOLULU, HAWAII, NOVEMBER, 1941

No. 8

## The National Council Acts in Full Understanding and Sympathy with this Missionary District

By the Rt. Rev. S. Harrington Littell, D.D.,  
Bishop of Honolulu

### Grants All Our Vital Requests

We are recording a new epoch in the history of the Church in Hawaii.

Not always in history can you recognize a turning point at the time when it occurs. But we should be blind indeed if we did not recognize the significance of the action taken by the National Council of the Church in New York at the meeting in October which settled fundamental questions in which we have sought their help for a number of years. There was no hesitation on the part of the Council in making the decisions after it had received the report of the official Deputation it had sent out to study and appraise our work in full cooperation with us. As Bishop Creighton wrote in the last number of the Hawaiian Church Chronicle, there "has never been a more thorough and careful survey" of any mission field.

### The Fundamental Issue

The question of the status of the Missionary District of Honolulu has been settled. Since 1935, our administration has been technically neither fish, flesh, nor fowl. Labelled under a "continental domestic district", it has been administered as if it were a Foreign Mission. Definite petitions from us for reconsideration of our status have been presented frequently and vigorously, particularly during the past four years. We pressed chief of all for an official survey on the field of our work here. Certain important problems could not be solved without a sweeping view of the whole situation first-hand. Details in administration could not be intelligently settled one by one. It required exactly what we have now attained—a comprehensive grasp of the unique situation of Hawaii in the Pacific, and of the Church in our Hawaiian archipelago.

This accomplishment makes possible now the solution of any and all problems which may arise. It is expressed in this first resolution of the National Council:

"RESOLVED: That the Missionary District of Honolulu be set up as a special overseas missionary district to be administered under special rules through the Department of Foreign Missions".

We call attention to the word *special*, which occurs twice in the resolution. We are no longer "Continental Domestic", or "Foreign", but Overseas, 2,000 miles out in the Pacific, not far from the line which divides the two hemispheres, and yet under the flag as an integral part of the United States of America. The proper and obvious administrative agency for our connection with the National Council, remembering always that we are a "special overseas missionary district", is the Department of Foreign Missions. We are thankful indeed that our personal link with the Council is Dr. James Thayer Addison, Vice-President for Administration and Executive Head of that Department.

Thus our particular work in this altogether different field is recognized in such way as to give us distinct individuality.

We are no longer standardized under a general classification, but personalized—enabling us to develop our particular character unhampered. To share in this, we shall call upon the Church on the mainland not for less but for more resources of personnel and equipment as the years go on, always recognizing that we, as well as the Church at large, are steadily working toward the time when Honolulu shall become a self-supporting diocese.

### "Bishop and Executive Council"

"RESOLVED: That the National Council commends the action of the Missionary District of Honolulu in the steps being taken for the establishment by canon of a Bishop and Executive Council for the District, and requests the District, in making such canon, to provide for both clerical and lay representation on that Council from the different islands."

This action is the outcome of consultations between the Bishop, the Council of Advice, individuals on all the Islands, and the Deputation, and has received their hearty approval.

### Iolani School

In addition to these resolutions on fundamental questions of policy, the National Council took definite action on specific features of our Church work. The first and most important of these was in regard to Iolani School, its incorporation and its finances.

"RESOLVED: That the National Council approves the plans for the incorporation of Iolani School such as will enable the School to be operated independently under its own Board of Trustees to be appointed by the Bishop and approved by the newly appointed Executive Committee, the Bishop to be *ex-officio* a member of this Board; and that when this incorporation is effected, the property at present held by the Board of Directors shall be transferred to the said Board of Trustees.

"RESOLVED: That, provided the incorporation of Iolani School is carried through on terms satisfactory to the National Council, the National Council cooperate with the Missionary District of Honolulu in making the ownership of the Ala Wai property secure to the School.

"RESOLVED: That an appropriation of \$39,000 be made from available legacies to the corporation to be formed to acquire the properties and to carry on the operation of Iolani School in the Missionary District of Honolulu, so that said corporation may be enabled by the use of such appropriation and other available funds to satisfy the existing mortgage of \$62,000 upon the new school site along the Ala Wai Canal, *on the express condition, however*, that said corporation shall have first been duly incorporated and not later than December 31, 1941, in manner satisfactory to the National Council, and so as to insure the continued operation of said Iolani School as a Church school of the Protestant Episcopal Church, and *on the further condition*, that upon payment of the sum so appropriated said corporation shall have good and marketable title to said new school

site, free and clear of any and all liens thereon other than the lien of taxes not yet due and payable; and

"FURTHER RESOLVED: That in the event that it should not be practicable to organize said corporation on or before December 31, 1941, then and in that case such appropriation of \$39,000 shall nevertheless be made for the purpose aforesaid; *provided* that good and marketable title to said new school site shall be conveyed to the Domestic and Foreign Missionary Society, free and clear of any and all liens other than the lien of taxes not yet due and payable, to be held for the use of said Iolani School and to be conveyed to said corporation when organized as aforesaid, *but provided further* that if no such corporation shall be so organized prior to January 1, 1943, the said property to be held and disposed of by said Society as it alone shall determine and without obligation to any person or person whomsoever.

Thus in concrete form does the National Council of the Church stand behind and build up the progress and development of Iolani. President Sills stated more than once while here as his firm conviction that the School, in its operation, its significance, in its possibilities and prospects, "is at least as important in the life of the Church in the islands as any other feature of missionary work." The relief and the stimulus from such action at Church Headquarters cannot be over-expressed.

### Other Necessary and Constructive Actions

"RESOLVED: That a plan for such furloughs as shall be granted in the Missionary District of Honolulu be made by the Department of Foreign Missions and presented to the National Council.

"RESOLVED: That a plan be worked out for assisting missionaries with their medical and hospital expenses, this plan to include: (a) the securing of special consideration in hospitals for the missionaries and their families; (b) the taking out of hospital insurance for missionaries and their families; (c) special provision to assist hardship cases; (a) and (b) to be taken care of in the District.

Dr. Addison writes: "The point of both these resolutions is that *something* should be done about furloughs and medical aid, but the fact that the details were left to further consideration indicates that Honolulu is to be treated as a special case and that presumably the regular provisions for furlough and medical care applicable to a normal foreign missionary district will not necessarily apply to Honolulu."

"RESOLVED: That the National Council calls attention to the obligation resting upon all organizations connected with the Missionary District of Honolulu to have their accounts audited in accordance with Canon 53.

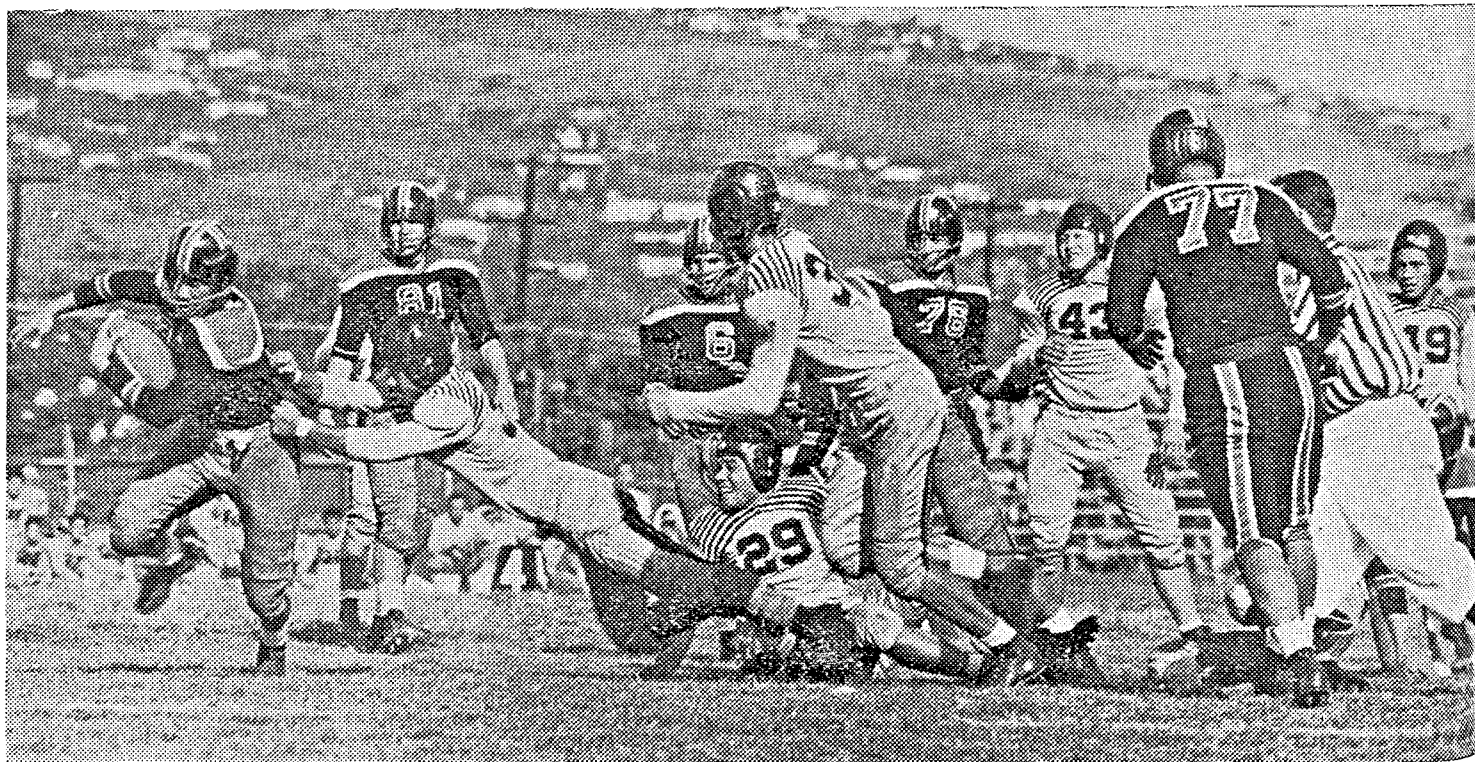
"RESOLVED: That in order that the National Council shall have appropriate oversight of the Missionary District of Honolulu, a schedule of receipts and expenditures together with a list of clergy and their salaries and all sources of income be sent to National Council annually.

Again we quote Dr. Addison: "The first resolution above gives you all the support we can in your efforts to see that laymen charged with financial responsibilities shall be properly bonded and have their accounts properly audited. The next resolution approved of action which we understand you also approve."

In Dr. Addison's covering letter to these resolutions is this paragraph: "I am happy to be the bearer of this large sum of news, nearly all of which I am sure will be gratifying to you. The fact that the resolutions constitute official action after long investigation adds I believe to their weight. We have every reason to be confident that they will help you to make the administration of the District of Honolulu stronger and more fruitful." He could have left out the "nearly all of which", for I as Bishop receive and accept and approve without the slightest qualification these actions of the National Council, down to the last detail.

I thank God for it all from the bottom of a heart so relieved of difficulties that this missionary field and its Bishop have carried for a long time that I find it hard indeed to express adequately my feelings.

(s) S. HARRINGTON LITTELL.



Albert Minn, Iolani halfback, as he broke away for sixteen yards and first down on the McKinley three-yard line in the second quarter to set the stage for the scoring of Iolani's lone touch down in a close game at the Stadium, October 4th. McKinley won finally, 12-7.—Photograph by courtesy of the Honolulu Advertiser.



# Here and There In The Diocese

## Our Assistant Editor

The Editor of the Hawaiian Church Chronicle is pleased to announce the appointment of Mrs. Robert T. Aitken, who has given invaluable assistance month by month in the preparation of this Church paper, as assistant editor.

## The Next Convocation

We remind Churchmen in this Missionary District that the next meeting of Convocation, the 40th, is called to meet at St. Andrew's Cathedral, Honolulu, on February 6th. Official business and worship will continue through Sunday, February 8th, with Clergy Day and Woman's Auxiliary meetings on the days following.

## 1942, A Notable Year for the Church

We have much to commemorate in this mission field in the coming year. 1942 will see the completion of 80 years of work of the Anglican Communion in Hawaii. This period divides into equal halves, the first 40 years under the Church of England and the second period under the American Episcopal Church. Iolani School will keep its 80th birthday, and the Priory its 75th. With the status of our Missionary District now defined, and the improved administrative methods in operation, the coming year, please God, will be a great one for our Church.

## United China Relief

This Fund has received over \$60,000 in the Territory as our part in the national \$5,000,000 fund for the relief of impoverished Chinese and the rehabilitation of refugees.

## A Bequest to Iolani

By the will of the late Rev. Thurston R. Hinckley, the sum of \$1,080 has been left to the Iolani Endowment Fund, which now amounts to \$8,823.00.

## Priory Endowments

Speaking of endowments reminds us that St. Andrew's Priory has a substantial amount in endowments, namely \$32,250.08. The Diocesan schools need dependable sources of income, and their endowment funds should be largely increased. The Priory has had an additional advantage in the possession of grounds and permanent buildings for a number of years, as well as a fixed income from invested funds.

**C. J. DAY & CO.**  
GROCCERS

Service and Quality  
Deliveries to All Parts of the City  
1060 FORT ST. - - PHONE 3441



*Back to schools and colleges have gone thousands of girls and boys this fall. Typical are these girls of St. Mary's Hall, Episcopal Church School in Burlington, N. J.*

## St. Mary's Home

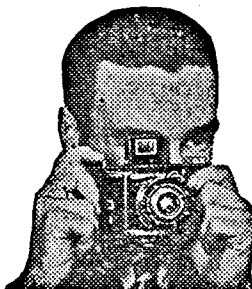
We are glad that the United Welfare Fund has recognized the excellence of our Church Home for orphan children, and also its needs, by increasing the appropriation to St. Mary's by \$500 for 1942. The total amount of the grant is \$5,500 for the next year.

## Our Part in the "New Order"

The action of our Partners of the National Council naturally gives us not only exhilaration but also courage. We could not ask any clearer evidence of intelligent and sympathetic cooperation and leadership than they have given. The tracks are laid down, and the signal given for full speed ahead. This basis of security in partnership is a necessity for perma-

## DELIGHTFUL MEMORIES

Keep them forever  
in snapshots.  
Use a Kodak and  
Verichrome Film



**EASTMAN KODAK STORES**  
KAPIOLANI BOULEVARD AND ON THE  
BEACH AT WAIKIKI—2312 KALAKAUA AVE.

## MAKING YOUR WILL

This booklet gives valuable hints on making your will.

It explains in a convenient, practical way the various matters concerning property distribution which experience tells us are often little understood. It outlines three basic will plans with sufficient space for notations and comment.

It explains "Dower and Courtesy" rights, gives a schedule of administrative fees and presents the various factors involved in the selection of Executor, Trustee and Guardian.

It will assist you to protect your family's future. Available upon application at our offices, or will be mailed upon responsible request.

*Dependable Trust Service  
For All Hawaii*

**BISHOP TRUST**  
COMPANY LIMITED

*Dependable Trust Service  
For All Hawaii*

ment strength and progress in our work. It does not however in the least, of itself, insure the development of our mission in Hawaii. The way ahead is clear, but the advance upon it depends on us. The clergy must lead, and the laity must be trained to follow in zealous effort and real sacrifice. Honolulu must now stand behind New York in the same spirit which New York has manifested to Honolulu. Let us Worship, Work and Give in a measure above anything we have known before.—S. H. L.

### "Iolani School Campaign"

It was the Committee under this name which made possible in 1938 the acquisition for the School of the ideal piece of ground on the Ala Wai. It is on behalf of this Committee that the chartered accountants are collecting such pledges as are still outstanding. The members of this Committee are: the Bishop, chairman; the Rev. Albert H. Stone, secretary; the Rev. Kenneth A. Bray, Mr. Herman V. von Holt, Dr. Paul Withington, and the treasurer, Rev. Wai On Shim.

### Font and Baptisms in New Mission

A beautiful baptismal font has been placed in Christ Memorial Church, Kilauea, Kauai, by Mrs. William Akana and Miss Ruby Scott in memory of their parents, Mr. and Mrs. Frank Scott. Mr. Scott was for many years manager of the Kiluea plantation.

It is interesting to note that of the eleven baptisms that have taken place in the new Church eight have been those of grandchildren of members of the congregation.

### Walter Hollander

A thumbnail sketch of a Honolulu boy who left these shores for training in California, then later on service with the Canadian Royal Air Force, has come. This local pioneer is Walter Hollander, who has been a student at Iolani school and the University of Hawaii.

He had always wanted wings. Finally he became a skillful flyer. Because of a slight health defect, he was rejected here for the service.

So he left Hawaii to take advanced pilot training at the Bakersfield center, California. From that famed school he and only four others in his class graduated with distinction.

\* \* \* \*

Soon afterwards, Walter went to Ottawa, Canada, then on to England with the F. R. A. F. Though he is permitted to give only a Pool address, his friends

### SAM CHING TIRE SHOP

OFFICE PHONE 2265

PHILIP AND SAM

245 N. Queen Street and Iwilei Road

Opposite New Market

Expert Vulcanizing & Tire Repairing

in Hawaii may write to him in care of his father, T. J. Hollander, Queen Emma Square, Honolulu, with an unstamped but covering envelope.

A mutual friend, calling Walter Hollander "altogether one of the finest men I have ever met," said his home letters were full of longing to hear from friends in Honolulu who could not know until now where he was.—Drothy Benyas, in The Honolulu Advertiser.

### November 9th to 16th Are the Dates

A Parishioner either supports the Church or is supported by it. In which class do you wish to be?

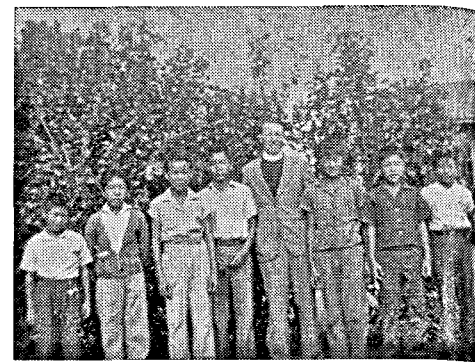
Remember the Annual Every-Member Canvass period set by the National Council is November 9th to 16th. Be sure that all who do the work are well trained for the task.

### Our Church Army Evangelists Reach England Safely

Capt. Denis Smith, who completed a five-year period of service under Archdeacon Walker at Kohala in August, writes from his home in Camberley, Surrey under date of September 13th that he and Capt. Harold W. Smith of Eleele, Kauai, who sailed with him from Honolulu in August and from Montreal in September, have both reached their respective homes in England safely, after an uneventful passage across the Atlantic. This is good news.

### Tangible Appreciation of the Shingle Memorial Hospital

Without approach on our part, the Hawaiian Homes Commission, through its executive secretary, Mr. Julian R. Yates, indicated that the importance and development of the Church Hospital on Molokai appeared to deserve the enlargement of the Hospital grounds. The mere suggestion was enough to set the Board of Managers to work in applying for an extension of the grounds. The original size of the land given by the Hawaiian Homes Commission was five acres. Almost immediately a reply was received, saying that the Commission was adding 8 7/10 acres, making the total area now 13 7/10 acres "by metes and bounds", all under one title, lot 17. There's concrete appreciation of good work!



Seven boys who were baptized on Monday, October 20th

### Baptisms at Paauilo

Seven American boys of Japanese ancestry in their teens were presented by the Rev. William A. Roberts and baptized by the Bishop on October 20th. Mr. Roberts had obtained from their parents, who are not Christians, written permission for these boys to be baptized. He had prepared for these parents a full statement of the significance of Holy Baptism, and of the vital relationship to God through the Saviour. These baptisms indicate a noticeable change in attitude toward Christianity on the part of the Japanese communities on the Island of Hawaii, largely alien, which have held themselves more aloof there from contact with Americans of other origins than similar communities have perhaps on any other island.

**LIGHT is cheap...**  
**SIGHT is dear!!**

*Protect your eyes with*

**WESTINGHOUSE**  
**MAZDA LAMPS**



**The HAWAIIAN ELECTRIC CO., Ltd.**  
Palace Square Telephone 3431

**G A S**

**CLEAN**  
**AS A**  
**TRADE WIND**

**Honolulu Gas Company**

### Return of the Rev. Robert L. Hellemans

On October 30th the priest from Antwerp, Belgium, who has taken out his final naturalization papers as an American citizen, the Rev. Robert L. Hellemans, reached Honolulu. Fr. Hellemans has more than filled the year of readjustment required by the Canons of those who are received into the Anglican Communion from other Christian bodies. He has spent his time since February 8, 1940, when he was received as a priest from the Roman Communion, almost equally between residence at Cambridge, Massachusetts, in St. Francis House with the American Branch of the Society of St. John the Evangelist (the Cowley Fathers), and in active work in a parish in New Jersey, near enough to New York to take special courses in the General Theological Seminary. The Bishop has appointed Fr. Hellemans assistant to Fr. Bray, to reside at St. Mark's Mission, Kapahulu. We welcome this latest addition to the Church staff.

### Reception for New Teachers

The annual social gathering for new teachers at the Priory, Iolani, St. Mary's, and other schools was held on October 19th at the home of Mr. and Mrs. Edouard R. L. Doty in Kuliouou. It was a delightful occasion, with games and abundant refreshments provided by the gracious hostesses.

### Personals

Mr. Robert H. McIntire, a new teacher on the staff of Iolani School this term, was married to Miss Helen Annette McIntire on October 24th by the Bishop in the Cathedral. Miss McIntire is a graduate nurse, coming here from Saco, Maine, to be married.

\* \* \* \*

Early in the month, Mr. Kenneth H. Rood, also a teacher at Iolani, was called suddenly to service in the Army, and sailed immediately to enlist in his home area on the mainland.

\* \* \* \*

On October 15th at Kamuela near the Parker Ranch, the infant son of Mr. and Mrs. Richard Palmer Smart was baptized by Archdeacon Walker of Kohala. The diminutive chapel is the same building in which the child's father was baptized as

## A Prayer for Iolani

ALMIGHTY GOD, the Fountain of all wisdom and goodness; we beseech Thee to regard with Thy favor and to visit with Thy blessing all schools of Christian learning and truth, especially at this time Iolani School. Endue its teachers with wisdom and sympathy, with patience and right judgment. And to all the pupils grant Thy fatherly care and protection. Give them a spirit of cheerful obedience, of faithful industry, of unselfish consideration, and of kindly courtesy. Guide them by Thy Holy Spirit into the paths of truth and goodness, that they may grow in grace and in the knowledge of our Lord and Saviour Jesus Christ. Amen.

## SUPPORT

### THE HAWAIIAN CHURCH CHRONICLE

Subscription Price—\$1.00

The time has come when the regular readers of the Hawaiian Church Chronicle should pay their yearly subscriptions. The cost is one dollar a year. Below is a bill for the subscription for this next year. The cost of mailing and printing can be guaranteed for the year when all our readers pay this dollar.

The finances of the Chronicle are in excellent condition, due both to the reduction in its size, and the generosity of its friends. Help us to keep up this good work by paying your dollar—keep the Chronicle in the black.

**Gifts, large or small, toward paying the cost of this publication will help the work of this Missionary District.**

Please send to:

T. J. HOLLANDER,

Queen Emma Square,

Honolulu, Hawaii.

## THIS IS A CHRONICLE BILL

(For those who have not sent in a gift or subscription)

I herewith send \$1.00 as a subscription, or a gift of \$..... to the Hawaiian Church Chronicle for 1942.

Name.....

Mailing Address.....

.....

Send to T. J. HOLLANDER, Treasurer  
Queen Emma Square, Honolulu, T. H.

AND MANY THANKS FROM THE STAFF

### CITY TRANSFER COMPANY LIMITED

Baggage, Furniture and Piano

Moving-Shipping-Storage

Fumigating

Agents All Over the World

TELEPHONES 1281-3579  
702 Fort Street, Pier Eleven  
Honolulu, T. H.



Rev. William Arthur Roberts

### ORDINATION OF WILLIAM ARTHUR ROBERTS

Of the seven Church Army evangelists who have worked in this missionary field, Capt. William A. Roberts was one of the first two to arrive. That was on April 30th, 1931. Capt. Roberts, with one short furlough, has labored on two islands for

an infant, and also the four-year-old brother several years ago.

\* \* \* \*

The Rev. Shannon Walker of Hilo has made a brief business trip to the mainland lately in connection with his welfare duties in the community.

\* \* \* \*

Since the Rev. Kenneth D. Perkins left Hilo in September, to become a Chaplain in the Navy, the Church of the Holy Apostles has been served by the Rev. Edward M. Littell. In anticipation of his call to active duty in the Army, the Bishop has sent the Rev. James S. Nakamura to be temporarily in charge of the

these ten years. He began at Paauilo on the Hamakua Coast of the Island of Hawaii, then filled a vacancy at St. John's-by-the-Sea, Kahaluu, on Oahu for nearly two years, and is now back in his original field on Hawaii, ministering in St. Columba's, Paauilo; at S. James and S. Matthew's, Papaaloa; and in halls and schools from Ookala as far as Honokaa.

In May 1939, Capt. Roberts was married to Miss Dora Rollings, who came out from England. His thorough training as an evangelist under the Church Army Chief, Wilson Carlile, has prepared him for effective personal work, and for the hearty approval of people representing the different racial antecedents to whom he is ministering.

The Bishop, after all canonical requirements had been met, ordained Capt. Roberts to the Order of Deacons on October 19th in the Church of the Holy Apostles, Hilo. The ordinand was presented by the Rev. Edward M. Littell, temporarily in charge of the Hilo Mission, who was also the preacher for the occasion. Men and women of the congregations along the coast from the missions where Mr. Roberts ministers were present, as were also the Rev. and Mrs. Kenneth O. Miller from Kona on the other side of the Island, and Dr. and Mrs. Thomas Jaggar from the Volcano. The service was one of deep devotion.

Church until such time as a vicar is appointed.

\* \* \* \*

Mrs. Gwendoline Shaw, superintendent of the Shingle Memorial Hospital on Molokai, has been ordered to Queen's Hospital, Honolulu, for a period of observation, rest, and treatment. For the time being, it is advisable that friends do not call personally.

\* \* \* \*

Archdeacon Willey of Kauai, District Governor for Hawaii of Rotary International, paused briefly in Honolulu on his way to Maui and Hawaii, and return, on Rotary business, in late October.

That same afternoon the Bishop and his son, with the newly ordained deacon and Mrs. Roberts, drove 64 miles to Waiohinu for the service of evensong which the Rev. Shannon Walker usually takes once a month. The Rev. Mr. Roberts will continue to live and work in the widespread area which he has served so long.

✱

### THE THANKSGIVING

To our prayers, O Lord, we join our unfeigned thanks for all thy mercies; for our being, our reason, and all other endowments and faculties of soul and body; for our health, friends, food, and raiment, and all the other comforts and conveniences of life. Above all, we adore thy mercy in sending thy only Son into the world, to redeem us from sin and eternal death, and in giving us the knowledge and sense of our duty toward thee. We bless thee for thy patience with us, notwithstanding our many and great provocations; for all the directions, assistances, and comforts of thy Holy Spirit; for thy continual care and watchful providence over us through the whole course of our lives; and particularly for the mercies and benefits of the past day; beseeching thee to continue these thy blessings to us; and to give us grace to show our thankfulness in a sincere obedience to his laws, through whose merits and intercession we received them all, thy Son our Saviour Jesus Christ. Amen.

—From Family Prayer, in the Book of Common Prayer.

✱

### CERTAIN ESSENTIALS OF THE EVERY-MEMBER CANVASS

These are: (1) Secure a Chairman, the best man possible; (2) Educate the people, through all the services of the Church, within the organizations, through "Forth" and other church publications; (3) Build a program; (4) Recruit can-

SEND IN YOUR  
SUBSCRIPTION  
NOW



**HAWAII & SOUTH SEAS CURIO CO.**

*Largest Pacific Souvenir Store  
in the World*

1033 Bishop St. Honolulu

Branches: Royal Hawaiian and  
Moana Hotels on the Beach at  
Waikiki

2385 Kalakaua Ave.

**ALEXANDER & BALDWIN  
Limited**

**SUGAR FACTORS  
SHIPPING**

**COMMISSION MERCHANTS  
INSURANCE AGENTS**

Offices in Honolulu, San Francisco  
and Seattle



vassers, and train them; and (5) Make the calls and follow this up throughout the year.

We count on all those in charge of congregations in this Missionary District to start at once for this Canvass. They will naturally announce without delay the purpose, and the time set for it, November 9th-16th, and they are asked to lead our people in prayer for it.

### The Individual Part

The canvasser is asked again to remember the words of Bishop Tucker when he says; "Ignatius of Loyola once said that when he had a Christian duty to perform he first prayed to God as if everything depended on Him, and then set to work as if everything depended on his own effort. This is the attitude in which we should approach the Fall Campaign."

### JOTTINGS FROM ST. PETER'S, HONOLULU

By the Rev. Y. Sang Mark, Vicar

During the visit of the Delegation from the National Council in August, St. Peter's Church was much honored by having Bishop Stephen E. Keeler, Co-adjutor of Minnesota, and Dr. Kenneth Sills, president of Bowdoin College, present to address the diocesan Young People's Fellowship on the subject of "Loyalty".

On the 17th of September, a combined service of all the Oriental Churches was held at St. Peter's. The Rev. Canon Y. Sang Mark, vicar, was the celebrant, assisted by the Rev. B. S. Ikezawa, Good Samaritan Mission, and the newly ordained deacon, the Rev. Andrew Otani. In the chancel were the Rev. Richard M. Lundberg and the Rev. Wai On Shim, St. Elizabeth's.

An inspiring message on Christian Duty and Service was delivered by Bishop Keeler, who took as his text "My bounden duty is to follow Christ, to worship God every Sunday in his Church; and to work and pray and give for the spread of his kingdom." (from the Offices of Instruction.)

### Dedication of Two Flags

Before the Service began, Bishop Keeler stepped down from the sanctuary to the chancel steps where he was met by two boys bearing flags, the Church flag and the flag of the United States. The Bishop blessed the flags and dedicated them. The Church flag was the gift of Mr. T. F. Farm, a devout Christian and one of our most successful businessmen. The national flag was the gift of Mrs. Y. C. Shim of Kula, Maui, as a thank-offering for many blessings received.

### Forward in Service

In response to the appeal for \$20,000 (Chinese national currency) from the Chung Hua Sheng Kung Hui (the Holy Catholic Church of China) at the beginning of the year, the Woman's Auxiliary

of St. Peter's was able to send \$1,500. This money goes to support the new work in Shensi under Bishop Shen Tzu Kao. Voluntary contributions of \$200 (Chinese currency) were sent to the Chinese Mission to Lepers, and about \$400 to St. Boniface Mission, Monlin, a new work started recently by the Sisters of the Transfiguration in the interior of Free China. This spontaneous response came after a talk given by Sister Deborah Ruth a few months ago at St. Peter's.

The following letter will be of interest to those who have the work of the Church in China at heart. These are days when action and not words counts, if the work in China is to survive. It is from Archie T. L. Tsen, assistant to the treasurer in the Missionary District of Shanghai.

"Dear Canon Mark:

I have received your draft for \$500 National Currency through Mrs. D. Roberts, who is one of our refugee missionaries, and Bishop Roberts. I beg to thank you for this generous response to the CHSKH General Board of Missions for an Emergency Fund and also to convey my thanks to your people. You helped us before in the raising of the Shensi Episcopate Endowment and now in this Fund. The spiritual link of fellowship is of course of greater importance. The Chinese congregation at Manila, St. Stephen's, under Rev. H. J. Wei has sent us \$1,000. Some months ago, they also gave us \$1,800 for the support of a Biblewoman for 3 years in Shensi. She is their Missionary. They always remember us with gifts at Christmas. The Bishop of Labuan and Sarawak will send us \$250, Straits currency, in due course of time. This gift is from the Chinese Christians under his jurisdiction. I have not heard from the other overseas Chinese congregations. I am looking forward to the time when I shall be able to make my thrice-postponed visit to America and I hope to be able to stop over at Honolulu to thank you and your people in person. Another \$4,000 will complete our Fund."

### Thanksgiving Sunday

The Sunday before Thanksgiving Day is Thanksgiving Sunday, at St. Peter's. The annual dinner (D. V.) will be set as usual. We urge our friends to bring their entire families to Church that day, and to join us at dinner afterwards.

## PROGRESS TOWARD THE INCORPORATION OF IOLANI

By the Bishop

The Incorporators of the School are meeting regularly, and at their third meeting heard the proposed Charter of the School, which has been prepared by the firm of Smith, Wild, Beebe, and Cades, the legal advisers. Also the announcement was made from Church Headquarters in New York of the intention of "the National Council (to) cooperate with the Missionary District of Honolulu in making the ownership of the Ala Wai property secure to the school."

That intention immediately become concrete reality by the appropriation of \$39,000 to cover all sums not already given or pledged, in order to secure the new site free of debt. On the day that this cheering news reached the Bishop, a payment of \$16,000 in cash was made to the Bank on the \$62,000 mortgage on the property. Most of this sum came from sources in the Islands: Mrs. Samuel P. Woods sent \$500, Iolani School savings added a considerable sum, and another large gift was received with the specific request that it be reported as anonymous. There are pledges in hand which more than cover the remaining \$7,000, and Messrs. Tennent and Greaney, the Church's official auditors, are collecting them.

Let me say right off, however, that the completion of payments on the site will not end the immediate need for making the property available for building. Utilities will receive the next attention: water, sewers and electricity, for instance.

### Who the Incorporators Are

The Bishop of Honolulu is of course ex-officio president; the Rev. Father Kenneth A. Bray the vice-president; Benjamin F. Dillingham the secretary; and George M. Collins, the treasurer. In addition to these officers, there are: the Headmaster of Iolani, Mr. J. Russell Cades, Mr. George P. Denison, Dr. John K. Kahaleanu, Dr. Gregg M. Sinclair, Mr. Hugh C. Tennent, Mr. Rolla K. Thomas, Dr. Paul Withington, Mr. John Mason Young and Dr. Jas. A. Morgan.

The Incorporators are hoping to secure the charter before the end of this year.

## C. BREWER AND COMPANY, LIMITED

(ESTABLISHED 1826)

## INSURANCE is a self-evident necessity.

Insure against such contingencies as

**FIRE, AUTOMOBILE ACCIDENT, BURGLARY, PERSONAL LIABILITY**

(Arising from the pursuit of Business or Pleasure)

Let us attend to your every Insurance need

PHONE 6261

HONOLULU, T. H.

P. O. BOX 3470

## DR. SILLS WRITES TO HAWAIIAN CHURCH CHRONICLE READERS

BOWDOIN COLLEGE

Brunswick, Maine

Office of the President

October 8, 1941

My dear Bishop:

Every since my return to the mainland and Maine I have been trying to get a few minutes of leisure in which I could both recall delightful experiences in the Islands last summer and send my warm thanks to the large number of Church people there who were so very kind to Mrs. Sills and myself. To have visited practically every mission, parish, hospital, school or institution in the Missionary District in a month and two days, was in itself a unique and thrilling experience. To have talked frankly with scores of church men and women was enriching. And to have seen the children and young people at St. John's-by-the-Sea, at St. Peter's, Honolulu, at St. Paul's, Makapala, at St. Columba's, Paauilo, on the Hamakua Coast, at New Mill in Kauai, was perhaps the most inspiring of all; for if the Church can win and hold the youth of all racial origins, the future is bright with promise. That is why also the work in the schools, the Priory, Iolani, and the religious day schools in the Islands is so vitally important; that is why the support, financial and sympathetic, of Iolani is such an imperative need.

As I sit at my desk in the college office over 4500 miles away, my thought goes back to review my varied experiences. There come before my mind's eye St. Elizabeth's Mission, St. Mary's Home, doing such wonderful work for children, the Shingle Memorial Hospital, a veritable Christian community center, early communion on the Feast of the Transfiguration at St. Columba's, the descent to the Leper Settlement at Kalaupapa with the visit to Father Damien's Church, the ordination service for Edward Littell with the laying on of hands by Chinese, Japanese, Korean, and American-born priests, the beauty of a lunar rainbow on the drive to Waimea, an afternoon near the volcano under the tutelage of one of the country's greatest scientists, sunset above the clouds at Haleakala, the crowds on the docks, and the leis, and the kind-

ness of friends who greeted us and who bade us at the end *aloha*; and behind all these experiences is the thought of the challenge to the Church and the importance of the District of Honolulu in the whole national picture. It was inevitable that the deputation should hear much criticism, listen to many complaints, find out the things that were wrong. In our busy days with you all—I remarked to the amusement of my friends here that although in the Islands more than a month I did not actually have time for a swim—we could not meet all, or see all, or hear all. But as the newspapers publish largely what is unusual, so we do not overlook the fact that in many a mission and parish the quiet daily work goes on; that there is much devoted service on the part of ministers and peoples; and that if some of the more obvious difficulties and obstacles can be overcome the future is bright with hope.

Will you allow me, Bishop, in this very informal way, to send this line of thanks and greetings to you and to all those who were so hospitable to us of the deputation and who did so much to inform us of the work of the Church all over the Islands.

Cordially yours,

(s) Kenneth C. M. Sills.

### COMMUNION OF SAINTS

Memory and love invite them and they come. With unsaid words they advise, rebuke or comfort us. We renew our

courage from their brave spirits, our faith from their confidence and charge ourselves to realize their hopes. We know that they are with God—and with us—and ask no more than to be worthy of their love and continue in their comradeship.

We bless Thee, Lord of Love and the Enduring, for our friends beyond the veil.

"More homelike seems the vast unknown,  
Since they have entered there:  
To follow them were not so hard,  
Wherever they may fare."

### ACKNOWLEDGEMENTS

We acknowledge gifts and subscriptions for the Hawaiian Church Chronicle which have been received from September 1st to November 1st, 1941. Where the amount is not mentioned, it is \$1.00.

The Rev. Perry M. Gilfillan; Mrs. Arthur Short; Miss Isabella Hodgson; Harrington Littell; Joseph F. Littell; John S. Littell; Mrs. Norman Hussa; Anonymous; Daniel M. Bates, \$5.00; Mrs. E. K. Carnes, \$1.50; Mrs. Frank H. Haller, \$3.00; Miss Mary A. Cutter, \$4.00; Mrs. Daisy K. Ottman; Rev. Canon F. N. Cullen; Mrs. Lucy R. Holt; Mrs. Ben Williams; Charles S. Crane, \$2.00; Mrs. Mitsue Nakagawa, \$2.00; Mrs. Susan McBride.

### NUUANU FUNERAL PARLORS, Ltd.

David Y. Akana, Prop.

1374 Nuuanu Avenue, near Vineyard St.

Morticians and Funeral Directors

DAY AND NIGHT PHONE 2494

### Sanford Optical Co.

A. M. GLOVER, Optometrist

206 Boston Building

Fort Street Honolulu, T. H.

Island Orders Promptly Attended To



## CELLOPHANE-WRAPPED

ASK YOUR GROCER

for the "Cello"

1-lb. carton of Mayflower

Kona Coffee

### THREE SERVICES OF SPECIAL INTEREST IN THE CATHEDRAL

The first of these services was the observance of the 30th anniversary of the founding of the republic of China. For nearly ten years, a commemoration of the "Double Tenth", that is the tenth day of the tenth month which is the Chinese Fourth of July, has in Honolulu included an annual religious service in St. Andrew's Cathedral. Sunday evening, October 12th, was the time for the service this year. The Bishop was special preacher, and Dr. Shao Chang Lee, professor of Chinese history and literature, gave the address. In addition to the Cathedral clergy, the Rev. Canon Y. Sang Mark of St. Peter's and the Rev. Wai On Shim of St. Elizabeth's took part in the service. Dr. Lee mentioned the fact, which is now so widely known, that China's great hero, Sun Yat Sen, lived in Honolulu in his student days, studying six years at Iolani School.

On October 26th two services of diocesan character were held. In the morning at the time of the Cathedral parish service, a commemoration of Navy Day was held. The Governor of the Territory, the ranking Admirals of the U. S. Fleet and of the Pearl Harbor District, together with a number of other Admirals, and their Staffs, and the ranking officers of the Marine Corps attended. By courtesy of Col. H. K. Pickett, the Marine Band assisted with the music. The Bishop was the preacher.

That evening for the first time a diocesan service for the presentation of the United Thank Offering of the Woman's Auxiliary was held. The Rev. Chaplain Kenneth D. Perkins, until recently at Hilo, but now in active service in the Navy, was the preacher. Representatives of nearly every one of the congregations of the five Islands where the Church is at work (persons living in Honolulu for the most part) presented the blue boxes. We are grateful primarily to Mrs. Ruth Bignell, diocesan secretary of the United Thank Offering, for the thought and effort which made this occasion one of diocesan significance.

### PRAISE NEW RULES FOR CHAPLAINS IN TRAINING CENTERS

#### Government Provides Facilities and Opportunity for Real Spiritual Ministry to Men in Armed Forces

Camp Blanding, Fla.—Sky pilots in the new American Army are no mere postmasters, mess or recreation officers; they are actually spiritual leaders. So declared Major the Rev. Hamilton H. Kellogg, at Camp Blanding, and formerly rector of St. James' Episcopal Church, Danbury, Conn.

"The Government is giving the chaplains a real job and tools to do it with in this mobilization," Chaplain Kellogg declares. "No longer are the 'sky pilots' expected to be postmasters, mess or re-

creation officers. They are largely busy with the spiritual and moral welfare of the men. They are provided with separate quarters where men can see them for conference and advice without fear of interruption. Each chaplain has an army car especially designed for heavy going; and a corporal on full-time duty with him to act as chauffeur and clerk. And Uncle Sam is also building chapels to seat 400 each. There will be 23 at Camp Blanding.

Major Kellogg says that much of the chaplain's work is done in the camp hospital. "Our hospital has 2,050 beds, all on one floor. There are on the average 40 men from the 192nd F. A. in the hospital at one time, and they are scattered all over the building. I suppose I walk eight miles a day just making hospital calls.

"The Sundry services are: 8 A. M., Holy Communion, Episcopal; 9 A. M., Mass, Roman Catholic; 10 A. M., worship service, undenominational. I have the 8 and the 10 o'clock ones.

"The spirit of Christian Unity impresses me greatly. In our division there are 18 chaplains; 7 Roman Catholics, 5 Episcopalians and 6 others, members of various Protestant Churches. Not only do they use the same altars, but twice a week there is a chaplains' meeting with a marvelous feeling of oneness of Christian purpose."

### YOU CAN'T TAKE IT WITH YOU

Mrs. A.: "I see that Mrs. MacWillie's

will is to be probated."

Mr. A.: "Why, did she leave anything?"

Mrs. A.: "Yes, SHE LEFT EVERYTHING."

\* \* \* \*

### FORMS OF GIFT TO CHURCH BY WILL

#### Form for Bequest of Money:

I give and bequeath to THE PROTESTANT EPISCOPAL CHURCH IN THE HAWAIIAN ISLANDS, a Hawaiian corporation, the sum of..... Dollars (\$.....).

#### Form for Bequest of Personal Property Other Than Money:

I give and bequeath to THE PROTESTANT EPISCOPAL CHURCH IN THE HAWAIIAN ISLANDS, a Hawaiian corporation, the following personal property: (Here add description)

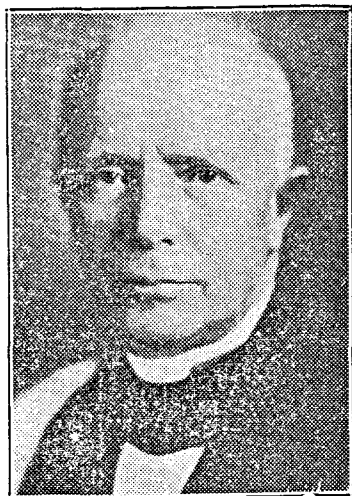
#### Form for Devise of Real Property:

I give and devise, in fee simple, to THE PROTESTANT EPISCOPAL CHURCH IN THE HAWAIIAN ISLANDS, a Hawaiian corporation, the following real estate: (Here add description)

#### Form for a Gift of Residuary Estate:

I give, devise and bequeath to THE PROTESTANT EPISCOPAL CHURCH IN THE HAWAIIAN ISLANDS, a Hawaiian corporation, all the rest, residue and remainder of my property, both real and personal, wherever situated and of whatever nature, in fee simple and absolutely.





*Bishop Robert B. Gooden of Los Angeles, claims most effective remedy for juvenile crime is religious training in schools. Says over half of crimes committed in America are by youths 16 to 21.*

### RELIGIOUS TEACHING IN SCHOOLS CALLED CRIME PREVENTIVE

#### Bishop Says Character Must Be Based on Christianity

Los Angeles, Calif.—Anticipating the time when thousands of boys and girls, young men and women will be returning to schools and colleges all over the country, the Rt. Rev. Robert B. Gooden, Suffragan Bishop of the Episcopal Diocese of Los Angeles, issued a statement calling American schools to account for youthful delinquency.

"Youth 16 to 21 are responsible for fifty per cent more of America's crime than their number in the population makes reasonable," the Bishop asserts. "In one year youths were 50% of all automobile thieves; 40% of all burglars; 28% of all robbers. In proportion to population the nineteen-year-olds lead the criminal parade.

"The fact that religion is left out of consideration during the impressionable years at the time of the major interest of young people, their secondary school days, must bear the blame for much of this sad situation. No real remedy is available until people recognize the fact that character cannot be developed with good hope of success unless God is admitted into the everyday life of youth, not by courtesy or subterfuge but by right.

"A prime duty of any school must be the nurture of character and good public schools make every effort as far as they can without religion. Here they are attempting the impossible, for real character must be based upon the foundations of real Christianity."

### THE BISHOP'S SCHOOL

Upon the Scripps Foundation. Boarding and day school for girls. Intermediate Grades. Preparation for Eastern Colleges. Caroline Seely Cummins, M.A., Vassar, Headmistress. The Right Rev. W. Bertrand Stevens, President, Board of Trustees.

LA JOLLA, CALIFORNIA

## APPORTIONMENTS FOR 1941

	1941 QUOTA	Received from		Total Receipts	Balance Payable	*Convoca- tion As- sess- ment	Amount Received	Episcopate Endow- ment
		Parishes and Missions	Auxiliaries					
<b>OAHU</b>								
St. Andrew's Cath. Parish.....	\$1,540.00	\$ 300.00	\$.....	\$ 300.00	\$1,240.00	\$ 860.00	\$ 200.00	\$ 46.7
St. Andrew's Haw'n Cong.....	487.00	145.00	50.00	195.00	292.00	130.00	.....	16.1
St. Peter's Church.....	635.00	350.00	.....	350.00	285.00	73.00	.....	14.1
St. Clement's Parish.....	612.00	437.12	.....	437.12	174.88	133.00	.....	47.3
St. Elizabeth's Mission.....	325.00	264.80	.....	264.80	60.20	73.00	.....	.....
St. Luke's Mission.....	120.00	72.86	1.00	73.86	52.14	30.00	.....	.....
Holy Trinity Mission.....	172.00	130.00	.....	130.00	42.00	37.00	.....	.....
Epiphany Mission.....	203.00	185.37	20.00	205.37	.....	45.00	.....	.....
Good Samaritan Mission.....	81.00	70.00	1.00	71.00	10.00	8.00	8.00	3.6
St. Mark's Mission.....	195.00	195.39	.....	195.39	.....	30.00	30.00	10.0
St. Mary's Mission.....	85.00	96.81	.....	96.81	.....	30.00	30.00	.....
St. Alban's Chapel (Iolani).....	257.00	275.00	.....	275.00	.....	37.00	37.00	10.0
St. John's-by-the-Sea.....	56.00	23.65	.....	23.65	32.35	8.00	.....	3.7
St. Stephen's, Waialua.....	81.00	81.00	.....	81.00	.....	8.00	.....	.....
Moanalua Sunday School.....	10.00	10.00	.....	10.00	.....	8.00	5.00	.....
Schofield Episcopal Church.....	.....	.....	.....	.....	.....	.....	.....	.....
St. Andrew's Priory.....	228.00	225.00	2.00	227.00	1.00	25.00	25.00	.....
Cathedral English School.....	58.00	14.43	.....	14.43	43.57	5.00	.....	.....
Young People's Fellowship.....	28.00	.....	.....	.....	28.00	5.00	.....	.....
Order of Good Samaritan.....	57.00	45.34	.....	45.34	11.66	7.00	.....	.....
<b>MAUI</b>								
Good Shepherd, Wailuku.....	435.00	72.15	25.00	97.15	337.85	75.00	75.00	17.9
Holy Innocents', Lahaina.....	230.00	150.00	.....	150.00	80.00	45.00	.....	5.2
St. John's, Kula.....	40.00	37.96	3.00	40.96	.....	15.00	15.00	9.1
<b>HAWAII</b>								
Holy Apostles', Hilo.....	275.00	101.90	.....	101.90	173.10	55.00	.....	29.4
St. Augustine's, Kohala.....	124.00	75.71	26.00	101.71	22.29	30.00	.....	5.5
St. Augustine's (Korean).....	15.00	5.00	.....	5.00	10.00	14.00	8.00	.....
St. Paul's Makapala.....	68.00	68.00	.....	68.00	.....	14.00	14.00	1.9
St. James', Kamuela.....	43.00	30.29	.....	30.29	12.71	14.00	12.00	.....
St. Columba's, Paauilo.....	85.00	50.00	.....	50.00	35.00	30.00	.....	3.3
Christ Church, Kona.....	225.00	36.16	75.00	111.16	113.84	74.00	.....	4.8
St. James', Papaaloa.....	196.00	125.00	10.00	135.00	61.00	30.00	30.00	8.3
Church Army Chapel.....	.....	.....	.....	.....	.....	.....	.....	.....
<b>KAUAI</b>								
All Saints', Kapaa.....	238.00	50.00	20.00	70.00	168.00	62.00	62.00	4.5
St. Paul's, Kekaha.....	.....	.....	.....	.....	.....	.....	.....	.....
St. John's Mission, Eleele.....	25.00	.....	.....	.....	.....	10.00	.....	12.6
<b>MOLOKAI</b>								
St. Paul's, Mauna Loa.....	12.00	1.55	.....	1.55	10.45	5.00	.....	1.0
Holy Cross, Hoolehua.....	23.00	13.20	.....	13.20	9.80	5.00	2.00	5.0
<b>TOTALS.....</b>	<b>\$7,264.00</b>	<b>\$3,738.69</b>	<b>\$ 233.00</b>	<b>\$3,971.69</b>	<b>\$3,306.84</b>	<b>\$2,047.00</b>	<b>\$ 553.00</b>	<b>\$260.4</b>

\*"CONVOCATION ASSESSMENT" is made up of: 1. delegates' traveling expenses, printing of Journal and other Convocation expenses; 2. \$1,000.00 interest for existing Diocesan debts and 3. \$200.00 for Hawaiian Church Chronicle.