

Hawaiian Church Chronicle

"For Christ and His Church"

THE RT. REV. S. HARRINGTON LITTELL, D.D., S.T.D., *Editor*

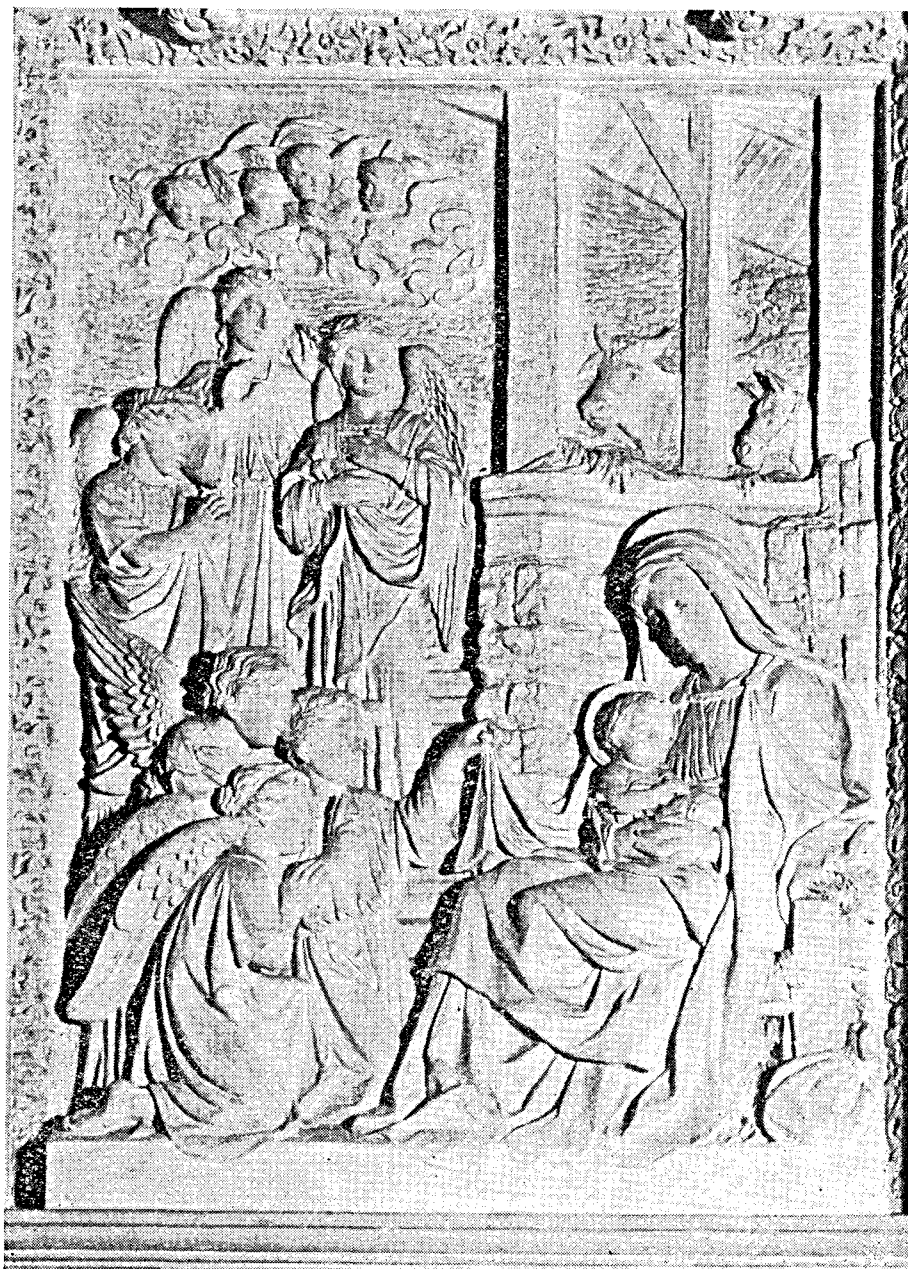
THE REV. E. TANNER BROWN, D.D., *Associate Editor*

Entered as second-class matter February 14, 1908, at the post office at Honolulu, Hawaii, under the Act of March 3, 1879.

VOL. XXIX.

HONOLULU, HAWAII, DECEMBER, 1939

No. 9



THE NATIVITY CARVED IN STONE IN THE REREDOS
OF BETHLEHEM CHAPEL, WASHINGTON CATHEDRAL

CLERGY LIST**MISSIONARY DISTRICT OF HONOLULU****BISHOP**

THE RT. REV. S. HARRINGTON LITTELL,
D.D., S.T.D., Bishop's House, Queen
Emma Square, Honolulu. 1930

PRIESTS

- The Rev. Canon Wm. Ault, Retired; 2070
University Ave., Honolulu. 1897
- The Rev. Canon Douglas Wallace, Retired;
Kealakekua, Hawaii. 1905
- The Rev. Canon F. N. Cullen, Retired;
Queen Emma Square, Honolulu. 1911
- The Rev. Frank N. Cockcroft, Retired;
Baldwin Home, Paia, Maui. 1915
- The Rev. Philip Taiji Fukao, Holy Trinity,
Honolulu. 1910
- The Rev. J. Lamb Doty, Missionary at
Large, Honolulu. 1918
- The Ven. Archdeacon James Walker, St.
Augustine's, Kohala, Hawaii. 1919
- The Ven. Archdeacon Henry A. Willey, All
Saints, Kapaa, Kauai. 1924
- The Rev. J. L. Martin, Waimea, Kauai.
1925
- The Rev. Y. Sang Mark, St. Peter's, Hono-
lulu. 1928
- The Rev. Noah K. Cho, St. Luke's, Hono-
lulu. 1928
- The Rev. H. H. Corey, M.A., L.S.T.,
Epiphany, Honolulu. 1929
- The Rev. B. S. Ikezawa, B.D., Good
Samaritan, Honolulu. 1931
- The Rev. Canon Edward Tanner Brown,
B.A., D.D., St. Clement's, Honolulu.
1931
- The Rev. C. F. Howe, B.D., Church of
Good Shepherd, Wailuku, Maui. 1931
- The Rev. Albert H. Stone, M.A., Iolani
School, Honolulu. 1932
- The Rev. Kenneth D. Perkins, B.A., B.D.,
Church of the Holy Apostles, Hilo,
Hawaii. 1932
- The Rev. Canon Kenneth A. Bray, B.A.,
B.D., Hawaiian Congregation, St. An-
drew's Cathedral, Honolulu. 1932
- The Rev. Wai On Shim, St. Elizabeth's,
Honolulu. 1933
- The Rev. J. Miller Horton, Holy Innocents',
Lahaina, Maui. 1936
- The Rev. Kenneth O. Miller, A.B., Christ
Church, Kealakekua, Hawaii. 1937
- The Rev. Canon Edward M. Pennell, Jr.,
St. Andrew's Cathedral Parish, Hono-
lulu. 1939.

CHAPLAINS

- Lt. Col. Chas. W. B. Hill, Chaplain, U.S.A.,
Fort Kamehameha. 1937
- Lt. David L. Quinn, U.S.N., Submarine
Base, Pearl Harbor. 1938.

DEACONS

- The Rev. Ernest Kau, B.A., Non-Parochial,
Ewa, Oahu. 1931
- The Rev. Edward M. Littell, B.A., Grace
Cathedral, San Francisco. 1933
- The Rev. Geo. Shannon Walker, B.A., B.D.,
Kealakekua, Kona, Hawaii. 1934.

**THE HOUSE OF BISHOPS MEETING
NOV. 8-9 IN ST. LOUIS ELECTS A
NATIVE BRAZILIAN SUFFRAGAN
BISHOP**



THE REV. ATHALICIO PITHAN, D.D.

"If we don't do all we are capable of doing for the Church, especially the missionary cause, it is sheer hypocrisy and mockery for us to expect that God will fulfill His purposes on earth," the Presiding Bishop declared to the House of Bishops at its annual meeting in St. Louis, Mo., in presenting the Church's Program for 1940. The House responded to Bishop Tucker's statement of needs and opportunities by adoption of a statement saying:

"The House having heard the challenging and statesmanlike address of the Presiding Bishop on the new and broadening opportunities for the extension of Christ's Kingdom throughout the world, loyally responds to his leadership and pledges to him and through him to the National Council its determination to exercise its best endeavors to meet in the year 1940 the full amount of the budget set forth by the National Council, thus making it unnecessary to repeat the efforts made for an emergency fund to meet a contemplated deficit as in the year 1939."

Addresses at various meetings as well as from the floor of the House, urged Christians to accept their special responsibilities growing out of war conditions in the world, and stressed that this period should be one of missionary expansion, rather than of retreat. The Pastoral Letter summarized the same points, urging the Church to alertness and activity, and awareness of the sin of war, and the ability of Christians to assure in the future, an enduring peace.

The Rev. A. T. Pithan, D.D., was selected Suffragan Bishop of Southern Brazil. Dr. Pithan is Brazilian born, of

French descent, head of the Collegio Independencia at Bage. He is rector also of the Church of the Crucified. In 1937 he was the Brazilian deputy to the General Convention in Cincinnati. He is 41 years of age.

The House voted to defer action on the vacancy in the episcopate of the Missionary District of Salina until General Convention in 1940.

Other subjects considered by the House were the problem of unemployed clergy, the program of the Forward Movement, mergers of two or more dioceses as a future possible policy; legislation providing for members of any religious body to register as conscientious objectors in time of war, such men to be liable for non-combatant service which might involve danger to life and limb; a report on the progress of the organization of the World Conference of Churches, methods of guarding trust funds of parishes and dioceses; and the work of the Episcopal Committee on German Refugees.

The Cross Comes Before the Flag

From the Bishop's Pastoral Letter, we quote: "War is rationally unjustifiable, morally indefensible and religiously irreconcilable. It is wrong to blame God for war; for the cupidity and stupidity of man and nations who devour each other. War as an instrument of national policy is a hideous denial of God and His condemnation rests upon it. It is wholly incompatible with the teaching and example of Our Lord Jesus Christ.

We recognize however, that there are times when peaceful expedients having failed, we are inescapably involved in war and we sympathize with all those whose consciences impel them to participate in armed conflict.

War will never achieve peace, but only sow the seeds for further wars. We believe the only sure foundation for peace is mutual understanding, sympathy, fairness, generosity, good will between nations. This may necessitate surrender by each nation of national sovereignty in such degree as may insure security for all nations.

The Cross comes before the Flag."

DID YOU KNOW?

Did you know—

that the new Julia Gilmore Lufkin Memorial Guild House in Wailuku has embodied in it as a background to the altar, the stained glass window formerly back of the altar in the old church which was torn down to make way for the new building, and which had originally been given to the Mission of the Good Shepherd by a Church School in San Francisco?

"Men are respectable as they respect."
—R. W. Emerson.

Hawaiian Church Chronicle

Devoted to the interests of the Missionary District of Honolulu

VOL. XXIX.

HONOLULU, HAWAII, DECEMBER, 1939

No. 9

Hawaiian Church Chronicle

Successor to the Anglican Church Chronicle

THE RT. REV. S. HARRINGTON LITTELL, D.D.,
S.T.D., Editor

THE REV. CANON E. TANNER BROWN, D.D.
Associate Editor

THE HAWAIIAN CHURCH CHRONICLE is published once in each month. The subscription price is One Dollar a year. Remittances, orders and other business communications should be addressed to T. J. Hollander, 222-B Queen Emma Square, Honolulu. News items or other matter may be sent to the Rt. Rev. S. Harrington Littell, S.T.D., Queen Emma Square or to the Rev. Canon E. Tanner Brown, D.D., 1515 Wilder Avenue, Honolulu.

Advertising rates made known upon application.

PARTIAL DIRECTORY OF DIOCESAN OFFICERS

Diocesan Treasurer, Mr. T. J. Hollander, 222-B Queen Emma Square, Honolulu.
The Bishop's Secretary, Mrs. R. T. Aitken, Queen Emma Square.
Secretary of Convocation,
President, Woman's Auxiliary, Mrs. William Thompson, P. O. Box 3261, Honolulu.
1st Vice-President, Mrs. E. L. Doty, 3130 Huelani Dr., Honolulu.
2nd Vice-President, Mrs. R. E. White, 2320 Nuuanu Ave., Honolulu.
3rd Vice-President, Mrs. F. J. Cushingam, Kealakekua, Hawaii.
5th Vice-President, Miss D. Solomon, Ke-kaha, Kauai.
Corresponding Secretary, Mrs. James Chrysal, 1523 Piikoi St., Honolulu.
Recording Secretary, Mrs. W. A. Wall, 930 Lunalilo St., Honolulu.
Treasurer, Woman's Auxiliary, Mrs. Kenneth Day, 1104 Kalihi Rd., Honolulu.
United Thank Offering Secretary, Mrs. Arthur G. Smith, 4615 Kahala Ave., Honolulu.
District Altar Secretary Mrs. Thomas Clancy, 750 Ocean View Ave., Honolulu.
Church Periodical Director, Miss Doreen Bryant, Punahou Cliffs, Wilder Ave., Honolulu.
Educational Secretary, Mrs. W. S. Fraser, 2037 Lanihuli Dr., Honolulu.
Supply Secretary, Mrs. Lafayette Aldrich, 3734 Manini Way, Honolulu.
Assistant Supply Secretary, Miss Anne Leiper, Country Club Road, Honolulu.
Birthday Thank Offering Secretary, Mrs. Keith Parris, 2321 Oahu Ave., Honolulu.

CALENDAR

December 3—1st Sunday in Advent
December 10—2nd Sunday in Advent
December 17—3rd Sunday in Advent
December 20—Ember Day
December 21—S. Thomas
December 22—Ember Day
December 23—Ember Day
December 24—4th Sunday in Advent
December 25—Christmas Day
December 26—S. Stephen
December 27—S. John the Evangelist
December 28—Holy Innocents
December 31—1st Sunday after Christmas
New Year's Eve
January 1—Circumcision

Christmas in the Tropics

The celebration of Christmas in America has certain well established elements. They have been drawn widely—the Christmas tree from Germany—the lovely carols from a dozen countries, chiefly from England—more recently a definitely religious emphasis has come with the creche from France, the little Holy Family and Manger group—the family dinner is American, turkey and trimmings. With these there is yet another element.

So, the Christmas tree, all tinselled and bright—the carols, giving tune to the joy of our hearts—the pious shrine, the little Lord Jesus cradled in hay—and the flower of Christmas, beautiful poinsettia.

We fortunate people in these beautiful Pacific islands share fully in the traditions of Christmas. The poinsettia is in bloom—brilliant flames of Christmas beauty—they are ours in tropic climes—and Christmas is ours.

All this we shall find in Holy Church when we offer our gift of love at ChristMass to the dear God and Father of us all—His gift to us is newness of life and love and joy and peace in the Lord Jesus. May our hearts be thrilled in the Holy Night and ever hold God's love in Jesus Christ warm and beautiful as our own Tropic's Christmas offering—beautiful poinsettia.

—CANON PENNELL.

Christmas Ode -- 1939

BY MILDRED E. STALEY

"While all things were in quiet silence, . . . Thine Almighty Word leaped down from heaven out of Thy royal throne."

The Wisdom of Solomon XVIII: 14-15. About 350 B. C.

"The Almighty Word leaps down from heaven above."
The Blessed Babe, Word of the Father's love,
Comes to sad earth, comes to mankind forlorn,
And all Creation stirs to greet the dawn!

He comes to hungry souls, comforts the poor,
Enters the heart that opens wide the door;
Those little hands stretched out on either side
Do draw man up to God this Christmastide.

Love's Hands widespread they welcome worlds to be,
Worlds of true peace and deepening harmony.
He has not come unless He's come in thee,
Lord Jesus come, possess and dwell with me!

SPECIAL SERVICES IN THE CATHEDRAL DURING NOVEMBER

The united Masonic service, to which all Blue Lodge Masons were invited through Alexander Douglas Potts standard bearer of the Grand Lodge of California and Inspector of Masons in Hawaii, was held on the evening of November 5th. Mr. Potts gave a preliminary word of welcome, and Canon Pennell, who is himself a Mason, preached on Masonry and the Church.

The official Armistice Day service, in which Governor Poindexter, ranking officers of both Army and Navy, and consular representatives in Honolulu of foreign countries participated, was held on the following day, which was Sunday. The Bishop made the address of welcome, and Canon Pennell preached.

On St. Andrew's Day a fine beginning to what is hoped to be an annual united birthday celebration by the congregations worshipping in the Cathedral was observed by a beautiful service, fully choral, Evensong. There had already been several Corporate Communion, such as one for St. Andrew's Priory, Sisters and pupils, and for Iolani Guild of the Hawaiian Congregation. At Evensong all three choirs, the parish, the Hawaiian, and the Priory, led the singing. All four of the active Canons of the Cathedral were present, including the rector of St. Clement's parish, and the vicar of St. Peter's.

The address was made by the Bishop on St. Andrew, the Patron Saint, and incidents of his life recorded in the Gospels which would indicate the kind of loyalty and witness to Christ which might be expected of Christians who worship in a building named after him. The occasion evoked real enthusiasm.

Immediately after the service, the Staff Meeting of all Honolulu Church Workers was held in the Bishop's House, and heard The Rev. Hollis H. Corey, of Epiphany, tell in a delightful and informing manner some of his experiences during a recent round-the-world trip.

CHRISTMAS FOR THE CHILDREN

Mrs. R. M. Clutterbuck, Chairman of the Christmas Cheer Fund reports that about \$200.00 has been received to date. The Committee acknowledges with thanks these gifts from island people and from several dioceses on the mainland. Last year the sum of \$545.00 was received and supplied a Christmas treat for about 2000 children of the Episcopal Mission Sunday Schools on all the islands and brought cheer to a few invalids and shut-ins. The largest item on the list is, of course, for St. Mary's Children's Home which is supplied each year with its Christmas tree

and gift for each of its forty children. Gifts for the older children take the form of some needed article of wearing apparel for the boys and dress material for the girls. This is the only home most of these children have ever known and just as every mother in her own home tries to fulfill at Christmas time the wish of each child, so Miss Hilda Van Deerlin takes into consideration the need and longing of each of her large family of children.

Gifts for this fund should be sent in before December 15th as time must be allowed for distribution to the missions on the other islands and for necessary plans and shopping. Remember the address: Mrs. R. M. Clutterbuck, P. O. Box 1, Honolulu.

ACKNOWLEDGEMENTS

We acknowledge gifts and subscriptions to the Hawaiian Church Chronicle which have been received from November 1st to November 30th. Where the amount is not mentioned, it is \$1.00.

Mrs. C. E. Huntington; Harrington Littell; Woman's Auxiliary through Mrs. H. M. von Holt, \$25.00; Mrs. Florence Lawrence, \$2.00; Rev. H. H. Corey, \$2.00; Mrs. G. E. Bryant, \$4.00; Miss Jean Nowell; William S. Fraser, \$3.00; Miss Mary M. Fraser; Mrs. W. L.

Emory, \$2.00; George P. Denison, \$5.00; Miss M. Yee, \$2.00; Mrs. Kate C. Wood; Mrs. Jennie D. Marshall; Chaplain C. W. B. Hill, \$5.00; Mrs. Woo Yee Bew, \$3.00; Mrs. Nadine Kenter Bodge; E. G. Villers; Miss Yin Kyau Chung; Mrs. J. P. Howatt, \$2.00; Dr. V. A. Harl; Mrs. Theodore Richards; Mrs. Jean Adams; Guy H. Buttolph, \$2.00; Robbins B. Anderson, \$10.00; Mrs. Paul Gillespie, \$2.00; F. J. Lowrey, \$5.00; R. A. Hutchison, \$10.00; Mrs. B. D. Chilson, \$2.00; Mr. Kim Loon Ching; Mrs. Ada M. Scott; Rev. George B. Stone-Alcock, \$2.00; Miss Nancy Littell, \$5.00; Miss Margaret C. Jackson, \$2.00; Miss Harriet E. Devoe, \$5.00; Rev. H. M. Denslow; Edwin Hawley Foot, \$5.00; Dr. Charles Herbert Young.

Are you familiar with the advantages of the

All Gas Kitchen?

If not, it will be to your interest to consult us

Honolulu Gas Company



CELLOPHANE-WRAPPED

ASK YOUR GROCER

for the "Cello"

1-lb. carton of Mayflower

Kona Coffee

RETURNS IN NOVEMBER FROM THE SUBSCRIPTION APPEAL

No reader of the Hawaiian Church Chronicle last month could escape the front page statement of the financial condition of this journal. Many readers did not try to escape it, tore out the printed subscription form, and sent in the subscription of \$1.00, frequently also an additional gift to make up the accumulated deficit.

Most of the sums received after the circulation of the November issue were naturally from readers in Hawaii. As we go to press, the distant subscribers are being heard from, and we hope for a stream of gifts and subscriptions from the mainland and from abroad.

Three dependable sources of income to meet the November 1st deficit of \$1199.27 are in hand or in view:

1. \$121.00 in cash received this month.
2. The annual subscription of \$100 from St. Andrew's Cathedral Parish.
3. A donation of \$250 from a friend who prefers to remain anonymous.

The total of this is \$471, as of November 30th. We trust that during the month in which Christmas occurs, we shall receive many presents to help wipe out the debt which has been piling up for the past five years; and we are grateful for many evidences, financial and otherwise, of appreciation of the Chronicle. Details of gifts and subscriptions are found under "Acknowledgements", in this issue.

DEDICATION OF PARISH HOUSE AT KOHALA, HAWAII

By Archdeacon James Walker
S. Augustine's Parish House will be dedicated on Tuesday, December 12th. We regret that we are not able to open it "free from debt", there being a balance due \$639.35.

There are scattered about these islands many who have lived in Kohala at one time or another or have connections here and still others who are interested in our work; to all such we appeal to for a donation to clear this balance. We are anxious to start the New Year free from debt.

Gifts earmarked for "S. Augustine's Parish House" can be sent to the Bishop or Archdeacon Walker, Kohala, Hawaii.

You will hear more about this new building after the Bishop's visit in December.

FIRE AND SPIRIT

You can quench a fire in one of three ways. You can leave it alone. You can pour water on it. You can put on it what will not burn. Just so you can quench the Spirit by neglect, by wilful sin, and by a life of selfishness and worldliness.—Dr. M. A. Cooper.

GREAT IMPORTANCE OF CHRISTMAS OFFERINGS THIS YEAR

Our Missionary Diocese is Counting on Them; \$1257.76 is Needed to Balance the Budget

No payments from local sources, whether for salaries or maintenance, are being paid for December, Mr. Hollander, the diocesan treasurer, reports. If all quotas as printed on the last page of the Hawaiian Church Chronicle were paid in full, we should still need \$967.76 to balance the year's budget. The printed schedule was issued in March as a proposed method of covering our various apportionments. Two missions indicated at once that they were not able to meet the increased quotas (one having been advanced from \$240 to \$500). This fact adds \$280 more to the total given above, making it \$1257.76. We are faced therefore with the task of raising no less than \$1257.76.

A new schedule will be presented to Convocation in January for 1940. Meantime we have only one method in view for avoiding a heavy deficit this year and being obliged to withhold in part salary payments for January. That method is generous additional contributions from congregations at Christmas time to be given specifically for this purpose, and gifts from individuals and organizations to help out this serious situation.

It need not be said that the diocese expects full payment on the part of such parish and missions as have not yet met their quotas, but the Board of Missions asks, and asks most earnestly, that all congregations will deliberately and cheerfully give additional Missionary Quota contributions at Christmas time to meet expenditures which are personal and vital in the maintenance of the Church work in these Islands.

NEWS FROM "THE PATHWAY OF THE GODS"

By the Rev. Kenneth O. Miller

Christ Church, generally referred to as being in "Kona", but really situated at "Kealakekua" (the "pathway of the Gods") in South Kona, Island of Hawaii, has been carrying on plans and efforts to close the year 1939 with no deficit or "borrowings" on "future expectancies." The Vestry and the Guild have cooperated to this end since September with the result that approximately \$100 has been raised through one private enterprise (a sale and bridge tea), another \$100 is soon to be realized on another private endeavor. The Guild Sale and Silver Tea netted about \$175 and the people have been responding quite generously otherwise.

The Fall effort for the Every Member Canvass for the support of the Church during 1940 is well underway, and the results will be known before long.

A Union Thanksgiving Service was held on Thanksgiving Day with the new but well-known Rev. Stephen Desha, in charge of the work of the Congregational Church in West Hawaii, as the preacher. There was a fine congregation present and the singing was most hearty and joyful. On Thanksgiving Day, for the dinner at the Vicarage, Rev. and Mrs. Miller and Mrs. R. V. Woods entertained a group of Kona teachers and social workers, who were otherwise "unattached" and a very pleasant day was enjoyed by all.

The Bishop is coming again to Kona, on the 15th of December, at which time it is hoped that a class of adults will be presented for Confirmation.

On the Sunday evening before Christmas Eve, December 17th, a Christmas and Epiphany Pageant is planned, to be held in the Church with adult characters portraying the events of the time, more than 1900 years ago. Early in the New Year, a One Act Play and an Old Fashioned Minstrel will be presented for the benefit of the Church under the direction of Mrs. Jean Skinner and Rev. K. O. Miller.

The opposite of Fear is not courage, but FAITH.

C. BREWER AND COMPANY, LIMITED

(ESTABLISHED 1826)

INSURANCE is a self-evident necessity.

Insure against such contingencies as

FIRE, AUTOMOBILE ACCIDENT, BURGLARY, PERSONAL LIABILITY

(Arising from the pursuit of Business or Pleasure)

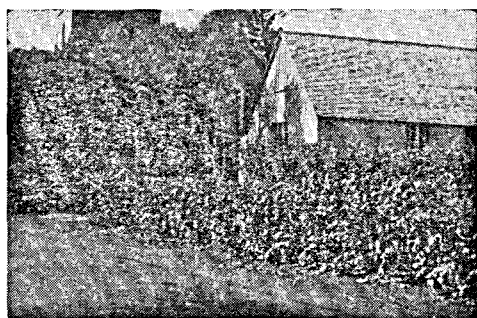
Let us attend to your every Insurance need

PHONE 6261

HONOLULU, T. H.

P. O. BOX 3470

Dedication of the Julia Lufkin Memorial Guild House



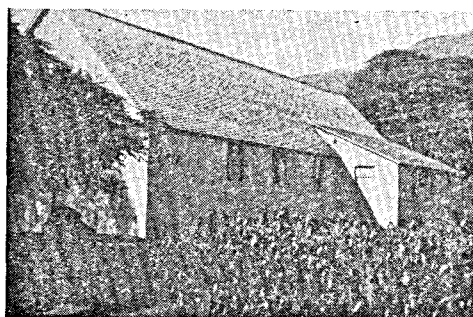
The Julia Gilmore Lufkin Memorial Guild House, Church of the Good Shepherd, Wailuku, Maui

The parish at Wailuku, Maui, rejoiced in the dedication and formal opening of the commodious new Guild House, given by Mr. Charles Dexter Lufkin in memory of his wife, and by his son Frank A. Lufkin, on October 30th. The rector, the Rev. C. Fletcher Howe, officiated at the dedication service, and Mr. Lufkin unveiled a bronze memorial tablet in the main hall. Following the ceremony, a large assembly of Church members and friends enjoyed a meal together in the new building.

This Guild Hall is a worthy memorial to a devoted Church woman. It is built

of reinforced concrete, and replaces an outworn frame building, erected in 1866, which was used as the Church of the Good Shepherd until 1911, when the present church building was consecrated, having been erected largely through the efforts of Canon Ault, who was vicar of Lahaina and Wailuku from 1897 for a time, and then resident missionary at Wailuku until 1910.

A full description of the new Guild Hall was printed in the July number of the Hawaiian Church Chronicle, soon after ground had been broken for it. The accompanying pictures give a good idea of the building, and of its location in relation to the parish church.



Side-view of the Guild House

SCHOFIELD ARMY WOMEN SHARE IN DIOCESAN LIFE AND WORK

The activities of the Branch of the Woman's Auxiliary at the largest Post of the United States Army located at Schofield Barracks on the Island of Oahu have been more wide spread than usual this past year. With army families coming and going at the will of "orders", there can seldom be much sense of continuity. However, the Schofield Branch has accomplished the unusual by achieving a sense of oneness not only within the immediate membership but also with the Diocesan Auxiliary and its problems.

There are twenty-five members at the moment—a situation which changes for the better or worse as transports arrive or depart. The Auxiliary has a monthly meeting, with interesting programs followed by luncheon. Mrs. C. T. Davis is President, having remained so even though she has moved into Honolulu.

The interest shown by this Branch in the diocesan problems is well illustrated by contributions during the year in the total of \$153 distributed to the following objects: Assessment for Missions \$15; Specials \$16; Lenten Sewing \$11; Missionary Shortage \$25; St. Mary's Home \$25; Bishop's Discretionary Fund \$25;

Shingle Memorial Hospital Pantry Day \$5; District Auto Fund \$6; Apportionment \$5; Christmas Cheer \$10; Hawaiian Church Chronicle \$5 and Altar Fund \$5.

Service U. T. O.

The development of a United Thank Offering plan for both the Army and Navy women is most hopeful. There are now national leaders for both branches of the service, and it is the hope that a feeling of belonging to the United Thank Offering movement will be felt by service women wherever they may be stationed.

Thus it is essential that the local leaders be service women and that the offerings be collected by these leaders and counted as the contributions of the particular

Williams Mortuary, Ltd.

To be served by
"WILLIAMS"

is a mark of distinction.

Personal Attention By An
Expert Staff of Assistants

Twenty-Four Hour Service

1076 S. Beretania Phone 3524

locality where they are living—a part of the whole either of the Army or Navy. It is a splendid development, requiring much more careful supervision than a parish branch. What a fine thing it will be when in the future the united offerings of both the Army and Navy women will be presented at the Triennial meeting along with those of the various dioceses!

This development is well illustrated by the Schofield Branch of the Auxiliary, which in the Spring contributed \$31.45 as the U. T. O. in-gathering and sent it through the Diocesan Auxiliary; and in the Fall sent the sum of \$42.34 as the contribution of the Branch through the National center at Washington.

The Diocese is proud of this Branch and in the loyalty and help shown toward local problems. They have certain responsibilities to the Church work on the Post and contributed \$25 during the year for the furnishings at the Post Chapel. Taken all in all the members have this year shown their devotion by contributions in the total of over \$250.00, which compares very, very favorably with some \$34 contributed last year.

We hear a good deal about the need for applied Christianity, but it is not always realized that one must have some Christianity before it is possible to apply it. That is why the preaching of the so-called social gospel, by itself, has often proved so disappointing and barren of results.—Rev. W. B. Silbie.

LIGHT is cheap...
SIGHT is dear!!

Protect your eyes with

WESTINGHOUSE

MAZDA LAMPS



The HAWAIIAN ELECTRIC CO., Ltd.

Palace Square Telephone 3431

RESIGNATION OF CAPT. GEORGE A. BENSON FROM THE CHURCH ARMY

A serious and unexpected blow has fallen upon us and a difficult problem created in a letter received by the Bishop from Capt. Benson, Senior Officer of the Church Army in Hawaii, tendering his resignation, to become effective on December 30th, 1939. Capt. Benson has accepted a repeated offer by plantations operating on the Hamakua Coast of a position involving "secular work among the employees of the plantations". This means that Capt. and Mrs. Benson will remain on the island of Hawaii, and the Captain writes that they are planning to affiliate themselves with the Church of the Holy Apostles in Hilo.

The decision, which reached the Bishop in the midst of a long correspondence regarding future developments of Capt. Benson's work with an enlarged responsibility and opportunity for him, came with an abruptness which makes the problem of carrying on, both immediate and difficult.

Capt. Benson and Capt. William A. Roberts arrived in Honolulu in April, 1931, the first two of a splendid staff of officers to organize Church Army in Hawaii. The cheerful, self-sacrificing, and effective work which they have done in building up the kingdom of God is well known in the diocese and abroad. Capt. Benson was commissioned as an evangelist in September 1922, "having been converted on the battlefield in the World War". During the 17 years of his active service in the Church Army, he has filled several important positions in parishes, chiefly in the slums of London and of one or two other large cities of England. He was Captain in charge of the Church Army Training College in London for several years, where he had the oversight and training of cadets.

For 9 years Capt. Benson has lived a life of strenuous activity on the Hamakua Coast of Hawaii, working out from Church Army Headquarters at Paauilo. Five years ago, he was married in St. Andrew's Cathedral, Honolulu, to Deaconess Leonora Stevens, whom he had met while living in East London. Both Capt. and Mrs. Benson have won for themselves the confidence and approval of the scattered communities along 70 miles or more of the east coast of the Big Island. It is with the utmost regret that we allow these devoted persons, who have a remarkable influence for good upon people of many different social and racial ancestries, to give up the work which is so fruitful and important. In saying this, we evaluate the work of Mrs. Benson, highly trained, skilful, and untiring, as ranking with the highest type of women

workers in the Church. For five years she has labored cheerfully and uncomplainingly on almost a voluntary basis. Lack of equipment and a meager stipend have not daunted the Bensons.

We shall have more to say about the accomplishments of Capt. and Mrs. Benson as well as about their future work in due time. For the present, we thank God for their life among us, and wish them every blessing in the new work they are entering, rejoicing that they are remaining near by, and not removed from the fellowship of our missionary family, or from opportunities to render assistance.

IOLANI WINS FOOTBALL CHAMPIONSHIP

After two years of associate membership in the Honolulu Interscholastic League, Iolani was admitted to full membership last January. Its football team has played in the exhibition games on Thanksgiving Day all three years. This year it won its place as the highest team of any of the 7 schools in the League. Local sports editors, in forecasting the likely positions of the teams last September, placed Iolani 4th. They reckoned that superior numbers, particularly in the public schools, together with the short term of membership in the League, would hold Iolani down to low ranking.

While they had come to recognize Fr. Bray's skill and personal leadership as a coach, which is now acclaimed second to none in the Islands, they did not give full value to the spirit of loyal sportsmanship which he has infused into the team. Iolani has been undefeated throughout the entire season, and tied once with Punahou in the official schedule, and again at the exhibition game on Thanksgiving Day. To have replaced McKinley High School with its 1700 boys (and about an equal number of girls), which has been champion for several years, was a real achievement. Incidentally, it may be worth inquiring how it came about that the four highest teams in the League were all private or church schools. To list in detail the scores of all seven games in which Iolani has been undefeated hardly seems necessary in view of the greatest achievement which is the championship for the year.

Editorials in local papers have voiced the admiration of the community for

Iolani's progress. As a rule, they confine their remarks to athletic progress, and commend Father Bray highly. In view of possible and not infrequent over-emphasis upon athletics in school life, the Bishop has written to one of the editors who had commented favorably on the fact that certain worthy boys who had athletic possibilities had been admitted to Iolani. We are glad to quote the letter here:

"Father Bray's Team Deserves to Win"

"Your editorial under the above caption in the November 30th issue is a fair and just appreciation of the success of Iolani's football team this season. You are right in giving the credit to Fr. Bray, who is recognized as the finest football coach in the Islands. I particularly value your comments on the 'wonderful civic duty' which he has performed 'towards many of the players'. You might add that in the development of athletics the scholastic standing of the players has been maintained.

Mr. Stone, the headmaster of Iolani, has not allowed students to play even in important interscholastic games unless their standing in the class room for the previous week has been up to the mark. Only once or twice have members of the team been kept out of games, for that is all that was necessary to indicate that scholarship and not athletics comes first at Iolani.

Fr. Bray stands as a preacher in the same class he does as a coach. Drop in at St. Andrew's Cathedral any Sunday morning at half past nine (it won't hurt you!) and hear him.

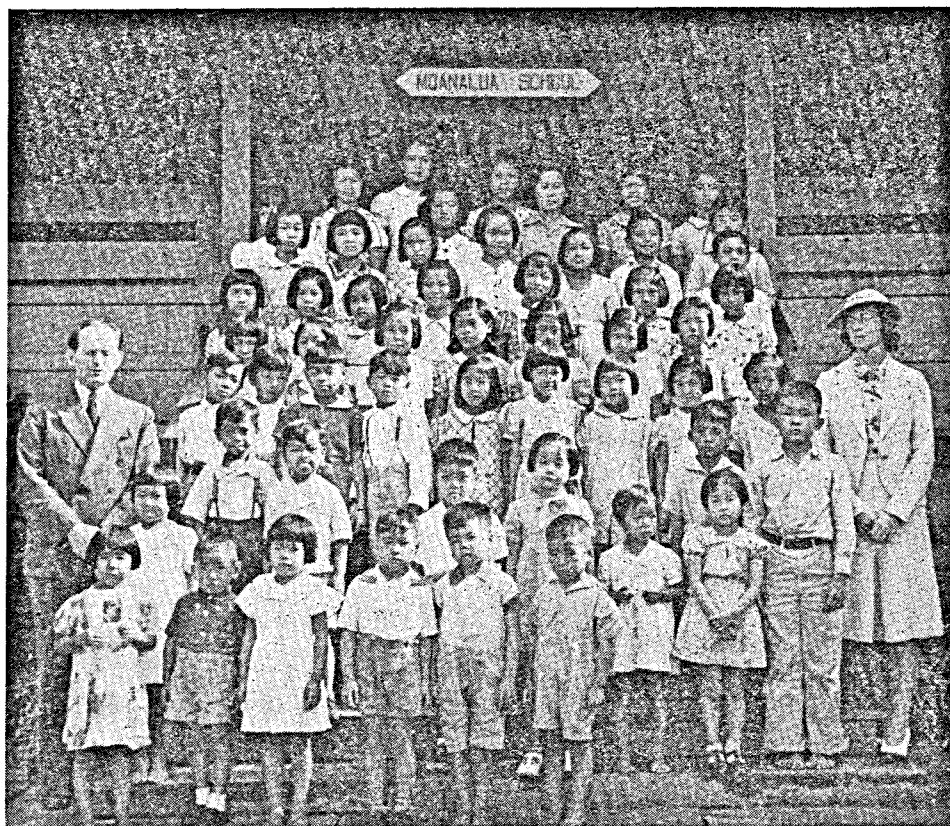
For sheer merit, the position of the Iolani team, after only one year of full membership in the Interscholastic League, is both deserved and commendable. Your editorial on the subject is excellent?"

ALEXANDER & BALDWIN Limited

SUGAR FACTORS
SHIPPING
COMMISSION MERCHANTS
INSURANCE AGENTS

Offices in Honolulu, San Francisco
and Seattle

THE LINCOLN NATIONAL
LIFE INSURANCE COMPANY
FORT WAYNE INDIANA
EDUCATIONAL — INCOME — PROTECTION
THEO. H. DAVIES & COMPANY, LIMITED
TERRITORIAL AGENTS



THE MISSION CHURCH SCHOOL AT MOANALUA

In the northern end of Honolulu in the building of the small public school, the Church has conducted a Sunday School for several years, which is attended by most of the day school children. For a good many years, through the interest of Mrs. Henry Damon and the close co-operation of the school principal and teachers, religious instruction had been carried on. It was by the invitation of these persons that we took over this bit of missionary work. Miss Cenie Hornung,

Miss Florence Johnson, W. Don Brown and others, on behalf of the Young People's Fellowship, organized and created a real interest in the school.

Our picture shows the present superintendent, Mr. Charles P. Sturges of Iolani School, with Miss Margaret Stone, Miss Kam, and Miss Lau, his assistants, and the ordinary Sunday attendance of pupils. Chinese, Hawaiian, and Japanese from 3 to 16 years of age, divided into three classes, are included among the pupils of the school.

This Sunday School is a good example of pioneer missionary work in Hawaii.

DEATH OF MRS. CURTIS PIEHU IAUKEA

On November 17th, at the age of 83 Charlotte Kahaloipua Hanks Iaukea, wife of the former Court Chamberlain and Secretary of Hawaii, died at the family residence in Honolulu. Mrs. Iaukea, like her husband, was a prominent figure in the picturesque era of the monarchy of Hawaii. She was of distinguished Island ancestry. Her maternal grandfather was Kekualaula and her grand uncle Keawaua, high chiefs of the islands of Hawaii and Oahu. Her mother was Akini Wahinekapuokaahumanu. Her father was Frederick Leslie Hanks, a New Yorker, who became active in Hawaiian affairs during the 1850s. He was related to Nancy Hanks, mother of Abraham Lincoln.

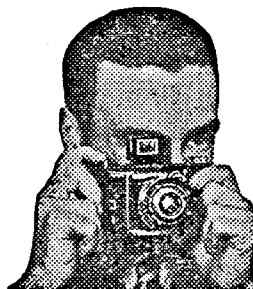
The Honolulu Star-Bulletin contains

this account of her life, which was full of color and interest: "On April 7, 1877, she was married to Col. Iaukea, then in the office of the chamberlain of the kingdom. Col. Iaukea became adjutant general of King Kalakaua's army and later

DELIGHTFUL MEMORIES

Keep them forever
in snapshots.

Use a Kodak and
Verichrome Film



EASTMAN KODAK STORES

1059 FORT STREET, AND ON THE
BEACH AT WAIKIKI—2312 KALAKAUA AVE.

become chamberlain and special envoy from the kingdom of Hawaii to various European and oriental countries.

She naturally spent most of her time at court and was a lady in waiting to Queen Kapiolani, consort of Kalakaua.

She was created a knight companion of Kapiolani and also received the Royal Order of Takovo of Serbia.

She was closely associated with Queen Liliuokalani and after the dethronement and until the death of the former queen was her loyal and devoted friend.

Her mother was an intimate of Queen Emma and as a child she was much at the royal palace.

Although in early life a Roman Catholic, Mrs. Iaukea later became an Episcopalian and was an active worker in her parish.

She was a member of the Daughters of Hawaii and one of her many interests was the Kapiolani maternity hospital."

It was distressing that at the time of Mrs. Iaukea's death, Col. Iaukea was ill in Queen's Hospital with asthma, and was unable to attend the funeral next day, which was conducted by Canon Bray of St. Andrew's Hawaiian Congregation.

Canada has lately torn down an old fort on the border and is using the materials to build a bridge. If only the procedure might be world-wide.

MAKING YOUR WILL

This booklet gives valuable hints on making your will.

It explains in a convenient, practical way the various matters concerning property distribution which experience tells us are often little understood. It outlines three basic will plans with sufficient space for notations and comment.

It explains "Dower and Courtesy" rights, gives a schedule of administrative fees and presents the various factors involved in the selection of Executor, Trustee and Guardian.

It will assist you to protect your family's future. Available upon application at our offices, or will be mailed upon responsible request.

Dependable Trust Service
For All Hawaii

BISHOP TRUST
COMPANY, LIMITED

Dependable Trust Service
For All Hawaii

HERE AND THERE IN THE DIOCESE

What the Presiding Bishop Thinks of the Church Work in Hawaii

In a letter to our Bishop dated November 14th Bishop Tucker writes:

"With regard to the whole question of our work in Honolulu I can assure you that I recognize fully that Honolulu is second to no other place in importance as a mission field, and also I recognize that the problems which you meet there are quite unique and that therefore they require a unique solution so far as methods are concerned."

Ground Broken for Church Building at Eleele

On November 27th a start was made on the new Chapel on our grounds at Eleele, Kauai. The stone is being contributed and placed on the ground by the generous assistance of Mr. Cedric Baldwin, Manager of the McBryde Sugar Company. Much of the labor on the building will be contributed under the direction of the principal of the Kalaheo Intermediate School, and by the head of the vocational department of that school. It is interesting that the very week that this work was started, the beautiful stone Chapel at Kilauea on the other side of Kauai was completed. In due time, a full account of these two long-hoped for church buildings will be given. Meantime, the most gratifying feature of the progress of the Church in both East and West Kauai, where the new buildings are located, is the whole-hearted community interest in the work.

Congratulations to Capt. Harold Smith and His Boy Scouts

Troop 89 of Emmanuel Mission, Eleele, has won the banner as the leading Scout Troop of Kauai. Capt. Harold W. Smith is its Scoutmaster. Just before an inspiring Thanksgiving service in the Eleele Hall on November 24th, two gold badges and two Church medals were presented to outstanding Scouts by the Bishop. The entire Troop, with many others of the vicinity, Archdeacon Willey, and the Rev. J. L. Martin attended the service.

Other Thanksgiving Services on Kauai

On arrival of the plane from Honolulu the day before Thanksgiving, Archdeacon Willey met the Bishop and drove him immediately to the Standard School at Makaweli. For several years Capt. Smith has conducted week-day classes in religious education there, and assembled at this time the entire school above the third grade for a special service. The children showed their good training by intelligent participation in the service, which was the first of its kind in that school. Following

the service, the Bishop and the Archdeacon stopped at Eleele to determine the location of the new Church on the lot.

The next day at Kapaa there was a beautiful Thanksgiving service at All Saints, during which a confirmation class was presented, and the Bishop preached. Earlier in the day, Archdeacon Willey baptized three adults. Unquestionably there is much on Kauai to bring encouragement to the Church workers.

At Waimea and Kekaha

We shall soon be ready to report definite steps in the erection of a suitable church building at Kekaha. At present we can report a growing interest which almost amounts to a demand for a church there. At Mr. Martin's invitation, the Bishop preached at the Waimea Foreign Church on the Sunday after Thanksgiving. During a two-day visit with the Martins, he was able to contact many people on West Kauai, and particularly to confer with Mr. Lindsay Faye, manager of the Kekaha Sugar Company, regarding the construction of the new church.

Thanks for Response to Our Appeals

In reply to our request for certain back numbers of the Hawaiian Church Chronicle, we desire to say that sufficient copies have been received to meet our present needs. We are grateful to the many readers who have so promptly responded.

Furthermore, two copies of the Prayer Book in Hawaiian have been given. One of these is a presentation copy by Bishop Staley to the Princess Liliuokalani, given to the diocesan archives by Dr. Mildred Staley. We are very glad to have these books; and hope that other readers of the Chronicle will be willing to search out and send to us additional copies, as we can place them judiciously in mainland libraries and collections which are asking for them.

The Every Member Canvass in Hawaii

Reports from parishes and missions throughout the Islands slowly filtering through say that progress is being made in the Every Member Canvass. Perhaps fuller reports have come so far from St. Clement's, Honolulu, and Christ Church, Kealahue, but even these are incomplete. We hope that the inclusion of subscriptions to the Hawaiian Church Chronicle will bring substantial results. We know of a canvass in one congregation which will increase the number of paying sub-

scriptions to our diocesan paper considerably.

Canon Ault Appointed to New Labor Board

Governor Poindexter has appointed a new Commission of Labor and Industrial Relations for the Territory. The Board is composed of five men, with terms of service as follows: Canon William Ault, retired Dean of St. Andrew's Cathedral, 5 years; Dr. William A. George, retired professor of the University of Hawaii, 4 years; Milton Beamer, 3 years; Ronald Q. Smith, 2 years; John Mason Young, 1 year. The law provides that the commission shall serve without pay, except for necessary travelling expenses. The first meeting for organization and preliminary work was held on Monday, November 27th, at the Governor's office.

Happenings at Holy Apostles, Hilo

What's new around our Church. Every week there is something to report. This Sunday we see a newly covered communion rail cushion, the work of the Woman's Guild. In the vestibule hangs a new canec bulletin board. We are indebted to Miss Taphon for several pieces of canec. And on Saturday the new missal arrived. It is being blessed at the early service, and will be exhibited at the library table after this service. This altar service book was given to us by the Diocesan Woman's Auxiliary.

On the first three Sundays in December, Evening Prayer will be held at 5:00 p. m. Many have asked for the well-



HAWAII & SOUTH SEAS CURIO CO.
Largest Pacific Souvenir Store
in the World
1033 Bishop St. Honolulu
Branches: Royal Hawaiian and
Moana Hotels on the Beach at
Waikiki
2385 Kalakaua Ave.

As An All Year-Round Dessert

Serve


HO-MIN
The Better Ice Cream

100% "HO-MIN DUSTRY"
**Service Cold Storage
Company, Ltd.**
919 KEKAULIKE STREET
Phones 5796 and 5797

C. J. DAY & CO.
GROCERS

Service and Quality

Deliveries to All Parts of the City
1060 FORT ST. - PHONE 3441

loved evening hymns and, in place of a sermon, appropriate recordings will be played. The Young People's Fellowship will come over to the vicarage after this service for a light supper and their weekly meeting.

Two new books have been added to our Parish Library—a sketch of English Church History of the 17th century, "Faith of our Fathers"; and a helpful volume entitled "The Lower Levels of Prayer". Both were published this year. Mrs. Wakefield will be at the door after this service to attend to the library.

St. Luke's Repair Fund Grows

The most important development in the maintenance of St. Luke's property during the past month has been a payment of \$45 by the congregation. This is in addition to previous gifts both of money and of labor. One or two further contributions from our readers have been received, making a total in hand of \$77.50. For the interest and generosity shown already, the Bishop is very grateful. The amount still needed is about \$200.

Several Outstanding Iolani Football Players

Packard Harrington, half-back, was officially voted the "most valuable player" in the entire Interscholastic League this season. During the half-time interval of the Punahou-Iolani game, in mid-field, he was presented with a handsome wrist watch, suitably engraved, by a Honolulu business men's club, after a committee of eight men, including leading Honolulu sports writers and broadcasters, had selected him. Harrington modestly accepted the honor, and commented afterwards "A lot of hooley! Father Bray and the guys made the touchdowns; all I did was run a little!"

Louie Collins came close to winning this award. As fullback, he has done great work throughout the year. Reginald Gandell of Kauai, president of the senior class, played fine football until he reached the age limit this year. He has been assistant coach, and was entrusted by Father Bray with the entire direction of the Thanksgiving Day game. He showed excellent judgment as coach, even in the decision which kept the entire eleven on the field throughout the game, without a single replacement. It is unusual to allow a whole team to play the entire game, but the boys held up vigorously to the end without injury or exhaustion.

A Note to the Clergy and Other Church Leaders

The Bishop calls your special attention to the statement given prominence in this issue of the Chronicle regarding the somewhat critical situation of our missionary finances. He asks that each one take

this situation to heart personally, and start at once in action which will forestall any deficit.

Statue of St. Mark Dedicated

In what is now a kind of shrine in front of St. Mark's Church in the Kapa-hulu district of Honolulu, there was dedicated on November 5th a beautiful Italian marble statue of St. Mark. This artistic figure, added to the former symbols of the Faith which hang on the porch in full view from the road, is a reminder to those who pass by of things unseen and eternal.

MEETING OF THE NATIONAL EXECUTIVE BOARD OF THE WOMAN'S AUXILIARY

The Movie: "The Great Commandment"

Miss Lindley, Executive Secretary, led in the meditations in preparation for the meetings from October 5th to the 9th. She spoke of the responsibility of each one of us as individuals but more of our corporate responsibility as women who represented the women of the whole church, each one of us in our corporate capacity carrying that communion with God, our mistakes, our sense of failure, our joy in service, our deep humility and our eagerness to go forward and be more worthy stewards in His Church.

Miss Lindley called attention to a Movie called "The Great Commandment" which she had seen and urged us to ask for it at the Movie houses which we patronize. She believes it to be great propaganda for peace though written a year ago.

The report on the United Thank Offering to September 30, 1939 showed an increase of \$77,659.58 over the amount in hand three years ago—but a long way to go if we are to mark its fiftieth anniversary by the largest offering yet!

Women's Place in Oriental Churches

The Rev. A. B. Parsons had just come back from an eight months trip to the East. He had been greatly impressed with the emergence of women in the East—had attended a Pan-Arabic congress of women meeting in Cairo as well as in Delhi—and had found women accepted on vestries in Japan as well as China. He spoke of the hopeful development of our Church in the Philippines in the beginning of a native ministry. In some ways, he said that the Diocese of Dornakal was the foremost diocese in the world. He had been at the consecration of the new Cath-

edral and seen the development of an indigenous Church. He felt the growth was due to the vital testimony of every baptized soul! He said that there was a free China back in the western part which Japan had not conquered, millions of Chinese were going there, 60 to 70 percent of all China was still under Chinese government and that China was about to emerge as a great nation. Missionaries in China are influential because they stood and didn't run. In Japan there is a cleavage between the people and the military. The people need Christ more than ever and we must proclaim without ceasing that God is love and work for a fellowship of people who love each other.

Not Money, But Clearer Witness, The Primary Need

The Presiding Bishop reminded all that there must be put into the regular giving of the Church for the year 1940 the amount of this year's emergency fund, \$300,000 if we are to carry on our missionary work. There is nothing more that can be curtailed without serious effect on our missionary enterprise. At the meetings of the National Council he struck a very clear note in regard to the situation when he said that "important and necessary as money is, it is not the primary need at the present moment. We can only extend and export what we have and all our weakness and defects are bound to be duplicated in our mission unless together with the money and the workers we send, there can be a reflection of a faith which is worthy of the God we worship—therefore a clearer and more convincing witness is the primary need of the Church today."

American Youth Lacking in Religious Knowledge

The delegates returning from the Youth Conference at Amsterdam report their astonishment at the knowledge of the Bible among all the delegates of the European and Oriental Churches and the almost total lack of such knowledge

Your children deserve
the BEST money can buy—

Give them Grade

"AA" MILK

... from ...

QUALITY

Dairy Products, Ltd.

919 KEKAULIKE STREET

P. O. Box 1436 Phone 5363

After business hours
Phone 76555



MARKET

among the American delegates, also the theological preparation on the part of the Europeans and the lack of preparation on the part of the Americans. This has so impressed our young people that they are advocating very definite Bible study and discussions of theology throughout the young peoples' groups in our Church. The average age at the conference was 24 and the only countries not represented were Spain and Germany although there were a few unofficial observers from Germany. There were no resolutions nor plans of action but the 1300 young people there had a chance to explore together the things they held in common and their differences.

ACTIVE CHURCH LIFE AT MILLS COLLEGE

Mrs. Florence H. Judd, Head Resident at Olney Hall, Mills College, California, writes that the largest Church representation on the Campus is Episcopal. She says: "We are fortunate in having had appointed as priest in charge of St. Andrew's Mission, the son-in-law of Bishop Stevens. St. Andrew's Mission is within walking distance of the campus. The Rev. Gilbert Prince who was ordained to the priesthood in September is very much interested in our work here and a big help. The fact that his sister-in-law is the student body president also helps.

The first service of the school year was held on October 1st, beginning with a celebration of the Holy Communion at eight a. m. and followed by breakfast at which there was an attendance of 55. An All Saints' Day service was held; Holy Communion is celebrated on the third Sunday of each month. The College service on Sundays is held in the chapel at Wetmore Gate at eleven o'clock with Dr. Diller, the College Chaplain in charge.

Last Monday the diocesan student commission held its monthly meeting at the home of Dr. Stratton in Berkeley with about 28 present including the advisers from Stanford, University of California, San Jose and Mills College and Dean Springer from St. Margaret's House. Dr. John Bennett reviewed his own book, "Christianity and the World." Each month we study one book and then have it reviewed at the next meeting. At two-thirty we adjourned to St. Margaret's House for tea. Everyone loves it there and it is full to capacity with a waiting list."

Mrs. Judd will arrive in Honolulu on December 20 on a business trip for Mills College and will spend the holidays with her son and daughters.

Did you know—

that the Honolulu Woman's Auxiliary has a diocesan library from which anyone may borrow books?

DEATH OF THE REV. DR. WILLIAM A. R. GOODWIN

His Dream of the Restoration of Williamsburg Came True

Dr. Goodwin died in September, and was buried among the 18th century colonial buildings at the Bruton Parish Church in Williamsburg, Virginia. It was Dr. Goodwin who inspired John D. Rockefeller, Jr. to undertake the restoration of Williamsburg at a cost of many millions. His "dream" of recreating the colonial capital of Virginia dated from his call to old Bruton Parish Episcopal Church in 1902. The restoration was begun in 1928 and is still under way. More than \$17,000,000 has been spent, the work including the rebuilding of the old capitol, the palace of the royal governors and other famous buildings.

Dr. Goodwin was born in Richmond, Va., June 18, 1869. He was educated at Roanoke College, and at Richmond College, and at the Virginia Theological Seminary. He served the Church as rector of St. John's, Petersburg; professor in the Bishop Payne Divinity School; rector of St. Paul's, Rochester, N. Y.; twice as rector of Bruton Parish Church, Williamsburg, and five times a deputy to General Convention. He was also professor of Biblical Literature and Religious Education at the College of William and Mary.

Already the author of several historical and religious works, Dr. Goodwin had devoted his energy after retirement to writing a book on the Williamsburg Restoration, much of the work being done at his direction from his sick bed. The manuscript was sent to the publisher a few days before Dr. Goodwin's death.

In recognition of his work, William and Mary College awarded Dr. Goodwin an LL. D. degree last February.

OUR BRANCH OF THE HOLY CATHOLIC CHURCH

The significant growth of the Anglican Communion is brought to notice in a book entitled *Partners* published in London by the Church Assembly. In 1800 there were 63 dioceses in the British Isles, 10 in the United States, and 2 elsewhere that were "in communion with the see of Canterbury." In 1850 there were 50 in the British Isles, 34 in the United States, and 26 elsewhere. In 1939 there are 69, 105 and 146. That is to say, in 140

THE BISHOP'S SCHOOL

Upon the Scripps Foundation. Boarding and day school for girls. Intermediate Grades. Preparation for Eastern Colleges. Caroline Seely Cummins, M.A., Vassar, Headmistress. The Right Rev. W. Bertrand Stevens, President, Board of Trustees.

LA JOLLA, CALIFORNIA

years the Anglican Communion has increased from 75 dioceses, 84% of which were in the British Isles, to 320 dioceses, of which only 22% are in the British Isles. Most remarkable is the increase through missionary work among people "who differ in race, nationality or language—generally all three—from the white English-speaking Christians who are popularly considered to make up the Anglican Communion". There are at present over 2,000 native priests and deacons, with nearly 20,000 native teachers, at work in the Anglican dioceses in Asia, Africa and Australia, and nearly two and a quarter millions of baptized native Churchmen in the Anglican missionary dioceses.

THE WORLD'S FAIR AND THE EPISCOPAL CHURCH

The New York World's Fair commemorated the 150th anniversary of the inauguration of the first president of the U. S., George Washington, an Episcopalian. The fair was opened in the Temple of Religion with a great service led by an Episcopal bishop, the Rt. Rev. John B. Larned, of Long Island. The first speech was made by the president of the fair, Hon. Grover Whalen, an Episcopalian. A talk was then made by the Mayor of New York, Hon. F. H. LaGuardia, an Episcopalian. Another talk was made by the representative of the British Government, Sir. Louis Beal, an Episcopalian. The main address was made by the president of the U. S., an Episcopalian. The most distinguished guests of the fair were the King and Queen of England, both of whom are communicants of the Church of England.—*North Carolina Churchman*.

BIBLE OUTSELLS "MEIN KAMPF"

The American Bible Society sponsors annually a "universal" observance on the second Sunday in Advent, which has long been known as "Bible Sunday" in our Communion. This year's commemoration December 10th will particularly emphasize the part played by the Bible in securing the liberties that men have enjoyed, and

CITY TRANSFER COMPANY LIMITED

Baggage, Furniture and Piano
Moving-Shipping-Storage
Fumigating

Agents All Over the World

TELEPHONES 1281-3579
702 Fort Street, Pier Eleven
Honolulu, T. H.

the particular quality of liberty which is supremely important.

There is constant increase in sales of the Bible throughout the world. Particularly astonishing is the news that in Germany the Bible outsold Hitler's *Mein Kampf* by 200,000 copies in 1938. Japan last year bought 10 per cent more Bibles than in the year before. China takes 20,000 Bibles a month. There are now 1,021 languages in which the Bible is printed in whole or in part. In these days when the ideals of humanity have certainly suffered severely, increased circulation of the Bible, is significant.

"THE HISTORY OF THE WORLD IS THE HISTORY OF THE INCREASING DEPENDENCE OF MAN UPON HIS FELLOW MEN"

"People and nations, blinded by their self-interest, have left God out of the picture. There is need today for a moral and spiritual dynamic. Only a vital Church can meet the needs of this moral advance.

"The Church must have more friendship, tolerance, and understanding within itself. The greatest evil that faces the Church today is the evil within the body. Most of the parishioners are no better than the heathen. Christ is not taken literally nor seriously. We need a consecrated Church.

"As individuals we can look to ourselves and see that we are doing the Christian thing, for the character of the Church in the long run is made up of the character of the members. We must create the moral atmosphere in which the problems that beset the world today can be solved. We need to say that prayer, 'Revive Thy Church, O God, beginning with me!'"—*Bishop Oldham of Albany.*

SAM CHING TIRE SHOP

OFFICE PHONE 2265

PHILIP AND SAM

245 N. Queen Street and Iwilei Road

Opposite New Market

Expert Vulcanizing & Tire Repairing

Sanford Optical Co.

A. M. GLOVER, Optometrist

206 Boston Building

Fort Street Honolulu, T. H.

Island Orders Promptly Attended To

NUUANU FUNERAL PARLORS, Ltd.

David Y. Akana, Prop.

1374 Nuuanu Avenue, near Vineyard St.

Morticians and Funeral Directors

DAY AND NIGHT PHONE 2494

STATEMENT OF THE APPORTIONMENT FOR MISSIONS AND THE ASSESSMENT FOR CONVOCATION EXPENSES FOR THE VARIOUS PARISHES AND MISSIONS—NOVEMBER 1939

	1939 Assess- ment	Received from		Total Receipts	Balance Payable	Convo- cation Assess- ment	Amount Received	Episcopate Endow- ment
		Parishes and Missions	Auxiliaries					
OAHU								
St. Andrew's Cath. Parish.....	\$2,200.00	\$1,170.88	\$ 200.00	\$1,370.88	\$ 829.12	\$350.00	\$.....	\$.....
St. Andrew's Haw'n Cong.....	500.00	130.00	50.00	180.00	320.00	53.00	4.00
St. Peter's Church.....	610.00	300.00	300.00	310.00	30.00	9.00
St. Clement's Parish.....	765.00	331.90	331.90	433.10	53.00	53.00	27.00
St. Elizabeth's Mission.....	330.00	295.94	295.94	34.06	30.00	30.00	5.27
St. Luke's Mission.....	140.00	139.00	1.00	140.00	12.00	8.88	1.00
Holy Trinity Mission.....	175.00	87.95	87.95	87.05	15.00
Epiphany Mission.....	200.00	65.85	65.85	134.15	18.00	5.08
Good Samaritan Mission.....	75.00	70.39	1.00	71.39	3.61	3.00	3.00
St. Mark's Mission.....	195.00	154.00	154.00	41.00	12.00
St. Mary's Mission.....	95.00	97.82	97.82	12.00	12.00	4.05
St. Alban's Chapel (Iolani)....	275.00	275.00	275.00	15.00	15.00
St. John's-by the Sea.....	60.00	60.00	5.00	65.00	3.00	3.00	4.23
St. Stephen's in the Fields.....	40.00	49.08	1.00	50.08	3.00
Moanalua Sunday School.....	12.00	13.18	13.18	3.00	3.00	3.00
Schofield Epis. Ch. Activ.....	15.00	15.00	2.00	7.00
St. Andrew's Priory.....	240.00	280.00	2.00	282.00	10.00	10.00
Cathedral English School.....	60.00	60.00	60.00	2.00	2.00
Young People's Fellowship....	30.00	30.00	2.00
Order of Good Samaritan.....	60.00	59.33	59.33	.67	3.00
MAUI								
Good Shepherd, Wailuku.....	470.00	37.13	25.00	62.13	407.87	30.00	15.20
Holy Innocents', Lahaina.....	200.00	110.00	110.00	90.00	18.00	15.35
St. John's, Kula.....	45.00	48.00	3.00	51.00	7.00	7.00	6.36
HAWAII								
Holy Apostles', Hilo.....	300.00	19.66	25.00	44.66	255.34	23.00	10.01
St. Augustine's, Kohala.....	115.00	26.00	141.00	12.00	12.00
St. Augustine's (Korean)....	9.00	9.00	6.00	6.00	1.50
St. Paul's, Makapala.....	500.00	106.00	106.00	6.00	6.00
St. James', Kamuela.....	48.25	48.25	6.00	6.00	2.00
St. Columba's, Paauilo.....	105.00	2.00	107.00	12.00	12.00
St. James', Papaaloa.....	125.00	10.00	135.00	12.00	12.00	10.00
Christ Church, Kona.....	260.00	73.11	75.00	148.11	111.89	30.00
Church Army Chapel.....	3.05
KAUAI								
All Saints', Kapaa.....	500.00	265.00	20.00	285.00	215.00	25.00	25.00	7.27
West Kauai Mission.....	85.00	20.00	20.00	65.00	6.00	6.00	3.10
Emmanuel Mission, Eleele.....	100.00	60.00	60.00	40.00	6.00	6.00
MOLOKAI								
St. Paul's, Mauna Loa.....	2.00	1.73
Holy Cross, Hoolehua.....	25.00	25.00	2.00	2.00
TOTALS.....	\$7,547.00	\$4,781.47	\$ 461.00	\$5,242.47	\$3,432.86	\$835.00	\$241.61	\$136.46

All monies contributed for missions should be sent to T. J. Hollander, Treasurer, Bishop's office, Queen Emma Square, Honolulu, as soon as possible.