

Hawaiian Church Chronicle



"For Christ and His Church"

THE RT. REV. S. HARRINGTON LITTELL, D.D., S.T.D., *Editor*

THE REV. E. TANNER BROWN, D.D., *Associate Editor*

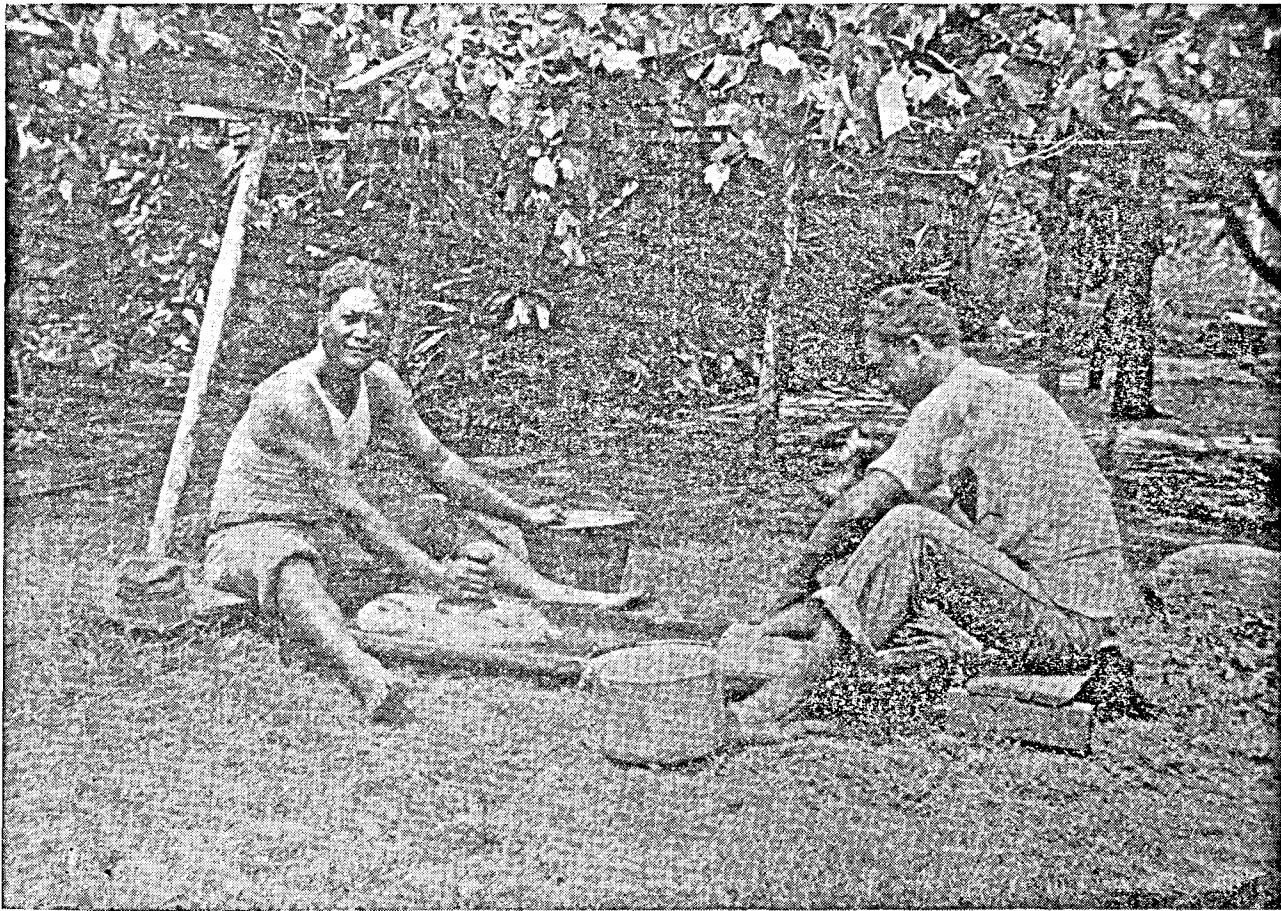
Entered as second-class matter February 14, 1908, at the post office at Honolulu, Hawaii, under the Act of March 3, 1879.

VOL. XXVII.

HONOLULU, HAWAII, JANUARY, 1938

No. 10-11

UNIVERSITY OF HAWAII
LIBRARY



MOLOKAI HOMESTEADERS POUNDING POI

CLERGY LIST**MISSIONARY DISTRICT OF HONOLULU****BISHOP**

THE RT. REV. S. HARRINGTON LITTELL,
D.D., S.T.D., Bishop's House, Queen
Emma Square, Honolulu. 1930

PRIESTS

The Rev. Canon Douglas Wallace, Retired;
Kealakekua, Hawaii. 1905

The Rev. Canon F. N. Cullen, Retired;
Queen Emma Square, Honolulu. 1911

The Very Rev. Wm. Ault, St. Andrew's
Cathedral, Honolulu. 1897

The Rev. Philip Taiji Fukao, Holy Trinity,
Honolulu. 1910

The Rev. Frank N. Cockcroft, Retired;
Baldwin Home, Paia, Maui. 1915

The Rev. J. Lamb Doty, Missionary at
Large, Honolulu. 1918

The Ven. Archdeacon James Walker, St.
Augustine's, Kohala, Hawaii. 1919

The Ven. Archdeacon Henry A. Willey, All
Saints, Kapaa, Kauai. 1924

The Rev. Thurston R. Hinckley, Non-
Parochial, Kapaa, Kauai. 1924

The Rev. J. L. Martin, Waimea, Kauai. 1925

The Rev. Y. Sang Mark, St. Peter's, Hono-
lulu. 1928

The Rev. Noah K. Cho, St. Luke's, Hono-
lulu. 1928

The Rev. H. H. Corey, M.A., L.S.T.,
Church of the Holy Apostles, Hilo,
Hawaii. 1929

The Rev. B. S. Ikezawa, B.D., Good
Samaritan, Honolulu. 1931

The Rev. Edward Tanner Brown, B.A.,
D.D., St. Clement's, Honolulu. 1931

The Rev. C. F. Howe, B.D., Church of
Good Shepherd, Wailuku, Maui. 1931

The Rev. Albert H. Stone, M.A., Iolani
School, Honolulu. 1932

The Rev. Kenneth D. Perkins, B.A., B.D.,
St. Andrew's Cathedral Parish. 1932

The Rev. Canon Kenneth A. Bray, B.A.,
B.D., Hawaiian Congregation, St. An-
drew's Cathedral, Honolulu. 1932

The Rev. Wai On Shim, St. Elizabeth's,
Honolulu. 1933

The Rev. Charles W. Nelson, B.A., M.A.,
Epiphany, Honolulu. 1936

The Rev. J. Miller Horton, Holy Innocents',
Lahaina, Maui. 1936

The Rev. Kenneth O. Miller, A.B., Christ
Church, Kealakekua, Hawaii. 1937

DEACONS

The Rev. Ernest Kau, Deacon, Non-
Parochial, Ewa, Oahu. 1931

The Rev. Edward M. Littell, B.A., Deacon,
Grace Cathedral, San Francisco. 1933

The Rev. Geo. Shannon Walker, B.A., B.D.,
Deacon, Kealakekua, Kona, Hawaii.
1934

DEACONESS

Deaconess Sarah F. Swinburne, St. Eliza-
beth's, Honolulu. 1925

IOLANI SCHOOL**A CHURCH SCHOOL FOR BOYS**

Boarding Department and Day School
Elementary, College Preparatory and Commercial Courses

Address inquiries to the Headmaster

Nuuuanu and Judd Streets, Honolulu

Telephone 4332

ST. ANDREW'S PRIORY**A CHURCH SCHOOL FOR GIRLS**

First to Eighth Grades, Inclusive, and High School Course Accredited

For particulars apply to the

SISTER SUPERIOR

St. Andrew's Priory, Queen Emma Square, Honolulu

Telephone 5239

THE CLUETT HOUSE

A Boarding Home for young women who are employed
in the city and for students. For terms apply to

MRS. EMILY C. NORTON

Queen Emma Square, Honolulu

Telephone 2924

ST. MARY'S MISSION AND HOME FOR CHILDREN

2108 SOUTH KING STREET, HONOLULU

A Church Home for Orphans and destitute children

Partially supported by the Welfare Fund

MISS HILDA VAN DEERLIN, Superintendent

Telephone 91572

SEAMEN'S CHURCH INSTITUTE

ALAKEA AND HALEKAUWILA STREETS, HONOLULU

Charles F. Mant, Superintendent

A HOME-LIKE HOME FOR MEN FAR FROM HOME

ROBERT W. SHINGLE JR. MEMORIAL HOSPITAL**HOLY CROSS CHAPEL**

Hoolehua, Molokai

GWENDOLINE SHAW, R.N., Superintendent

ANNA BUSCH, R.N.

FRANCES LADD, R.N.

FLORENCE MAE WRIGHT, R.N.

**COMMUNITY OF THE
TRANSFIGURATION**

(Mother House, Glendale, Ohio)

ST. ANDREW'S PRIORY BRANCH

Sister Clara Elizabeth, Superior, C.T.

Sister Rhoda Pearl, C.T., Principal

Sister Katherine Helen, C.T.

Sister Martha Mary, C.T.

Sister Amy Martha, C.T.

Sister Deborah Ruth, C.T.

CHURCH ARMY EVANGELISTS

Captain George A. Benson, Senior Officer,
C. A. Headquarters, Paauilo, Hawaii.
1931

Captain William A. Roberts, St. John's-By-
The-Sea, Kahaluu, Oahu. 1931

Captain Henry Hamilton, Eleele, Kauai.
1932

Captain John Oliphant, Paauilo, Hawaii.
1932

Captain Denis Smith, Kohala, Hawaii.
1936

Captain Harold Wilmot Smith, Eleele,
Kauai. 1936

Hawaiian Church Chronicle

Devoted to the interests of the Missionary District of Honolulu

VOL. XXVII.

HONOLULU, HAWAII, JANUARY, 1938

No. 10

Hawaiian Church Chronicle

Successor to the Anglican Church Chronicle

THE RT. REV. S. HARRINGTON LITTELL, D.D.,
S.T.D., *Editor*

THE REV. E. TANNER BROWN, D.D.
Associate Editor

THE HAWAIIAN CHURCH CHRONICLE is published once in each month. The subscription price is One Dollar a year. Remittances, orders and other business communications should be addressed to T. J. Hollander, 222-B Emma Square, Honolulu. News items or other matter may be sent to the Rt. Rev. S. Harrington Littell, S.T.D., Emma Square or to The Rev. E. Tanner Brown, 1515 Wilder Ave., Honolulu.

Advertising rates made known upon application.

PARTIAL DIRECTORY OF DIOCESAN OFFICERS

Diocesan Treasurer, Mr. T. J. Hollander,
222-B Queen Emma Square, Honolulu.

Secretary, Board of Missions,

Secretary of Convocation, Rev. Albert H.
Stone, Iolani School, Honolulu.

President, Woman's Auxiliary, Mrs. W. S.
Fraser, 2037 Lanihuli Drive, Honolulu.

Treasurer, Woman's Auxiliary, Mrs. Ken-
neth Day, 1104 Kalihi Rd., Honolulu.

Corresponding Secretary, Woman's Auxiliary,
Mrs. Newton T. Peck, 4369 Royal Place,
Honolulu.

United Thank Offering Secretary, Mrs.
Harold Podmore, 50 Bates St., Honolulu.

District Altar Secretary, Mrs. Thomas
Clancy, 750 Ocean View Ave., Honolulu

Church Periodical Director, Mrs. Desmond
Stanley, 6 Kawanakoa Place, Hono-
lulu.

Supply Secretary, Mrs. Robert F. Lange,
2261 Liliha Street, Honolulu.

Assistant Supply Secretary, Mrs. E. K.
Carnes, 2188 Helumoa Rd., Honolulu.

Birthday Thank Offering Secretary, Mrs.
Keith Parris, 2441 Sonoma St., Hono-
lulu.

CALENDAR

1938

January 1—Circumcision
January 6—Epiphany
January 9—First Sunday after Epiphany
January 16—Second Sunday after Epiphany
January 23—Third Sunday after Epiphany
January 25—Conversion of S. Paul.
January 30—Fourth Sunday after Epiphany
February 2—Purification B.V.M.
February 6—Septuagesima Sunday

Anniversary of Shingle Memorial Hospital Hoolehua, Molokai, Founded in January, 1932

On January 8th, the Hospital's birthday, the Board of Managers of the Hospital are giving a luau to all persons on Molokai who have been patients in the Hospital or attendants at the clinics. With special guests, about 500 people are expected. This number of the Hawaiian Church Chronicle, with the hospital photographs, will be given out to the guests, and for this purpose 500 additional copies are being printed.

In observing the 6th anniversary of the opening of the Hospital on Molokai, we are printing several pictures of the buildings. The medical work and health program, the nutrition and pre-natal clinics, have all continued year by year. Two monthly records of admissions to the hospital have been reached in the last six months, when 63 patients were admitted in July, and 68 in August.

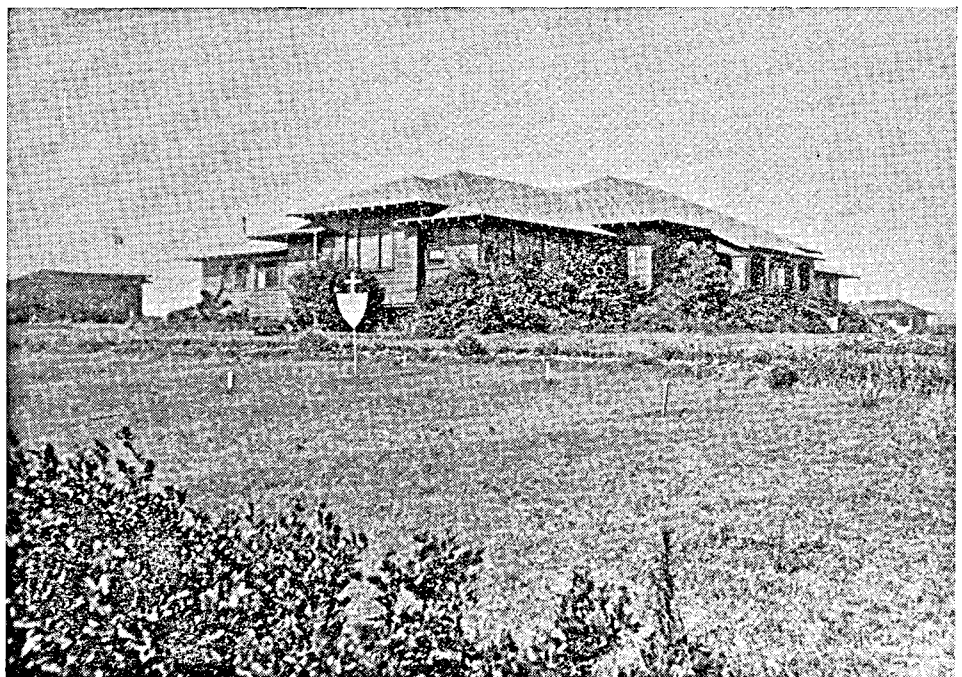
To indicate recent developments, we are listing many of the improvements in the hospital buildings and additions to the equipment, confining ourselves to the sixteen months' time in which Mrs. Gwendoline Shaw has been the superintendent.

Doubling the area of the garage; addi-

tion of two rooms and lattice-lanai to servants' house; building large new laundry with concrete floor with electric washer and super ironer, and of large lattice drying yard; new bedroom and lanai added to nurses' home; adding large sun porch, to accommodate 10 beds, in front of hospital building; additions to office and to O.B. ward; new dining room for nurses; combining the lanai at entrance of the hospital and living room into one large reception room; porte-cochere added to front door of the hospital; former nurses' dining room and pantry remade into office for doctor and laboratory; isolation ward built; complete set of new wicker furniture for living room, and new draperies wherever needed in the building; purchase of four bedside bureaus; piano for nurses' home; new oxygen tent machine.

The Hospital is indebted particularly to two specially generous benefactors, Mr. and Mrs. Paul I. Fagan and the George N. Wilcox Trust, whose gifts have more than covered the expense of the important additions and alterations.

It would be almost impossible to quote



THE MAIN BUILDING FROM THE GATEWAY

the sources of all garments received during the year for use in the Hospital. Here are some:

The Honolulu Missionary Union; The Needlecraft Guild of Hawaii; St. Andrew's Hawaiian Guild; The Girls' Friendly Society (St. George's Parish), Kansas City, Mo.; The Papaaloa Guild and Auxiliary; The St. Mary's Girls' Friendly Society, Kansas City, Mo.; The Friendly Friday, Honolulu; St. Agnes' Guild, Grace Church, Cathage, Mo.; Springfield, Mo., Guild; and many interested individuals.

The superintendent notes each month at the end of her report gifts sent to the hospital during that month, such as fruit, flowers, vegetables, magazines, linen, small equipment for various branches of the work. A 160 pound tuna fish from Mr. Foster Davis of Honolulu, and a deer from Mr. George Cooke of Molokai, were unusual gifts. All show the interest and appreciation of the people for the hospital.

It must be noted that apart from any other gift they might give, the St. Andrew's Hawaiian Guild sends a gift of \$100 annually to be used as necessary. In April, the Ulu Ilima Club of the Honolulu YMCA sent a gift of \$75. The Pantry Supply Day, when each organization of the Woman's Auxiliary of the diocese donates some article of food, such as cases of fruit, 100 pounds of sugar, rice, etc., was most successful.

Progress Toward Final Church Union

Bishop Perry Discusses Closer Union with Presbyterian Group; First Official Step Taken

New York—Negotiations looking toward ultimate Church unity took place December 7th when the Presiding Bishop in his office at Church Missions House met a delegation from the Presbyterian Church in the United States of America, to convey officially the information regarding the recent action of General Convention with reference to closer union with the Presbyterian body.

Representing the Presbyterian Church were the Rev. Dr. L. S. Mudge, secretary

Dr. Paul Wiig Leaving Molokai

Our able and efficient doctor at the Shingle Memorial Hospital, appointed by the Territorial Board of Health for service on Molokai, is moving to Honolulu after nearly six years' effective work on that island. We shall miss his cheery presence and his ready helpfulness. We welcome as the new appointee of the Territory, his brother, Dr. Laurence Wiig, and hope for him a useful work and happy life on the Friendly Island.

of the General Council of the Presbyterian Church, and the Rev. Dr. J. Ross Stevenson, chairman of the Presbyterian Assembly's department on Church cooperation and union. With Bishop Perry, and representing the Episcopal Church's Commission on Approaches to Unity (of which Bishop Parsons is chairman) was the Rev. Dr. Howard C. Robbins of the General Theological Seminary, for many years active in various movements looking toward unity among Christian communions.

The step taken on December 7th was the presentation to the Presbyterian group of the resolution passed by General Convention, which constituted the first official step in the process of closer union between these two groups. The action of Convention, however, had followed a series of informal conferences with Presbyterian leaders. Bishop Perry formally read the Resolution as follows:

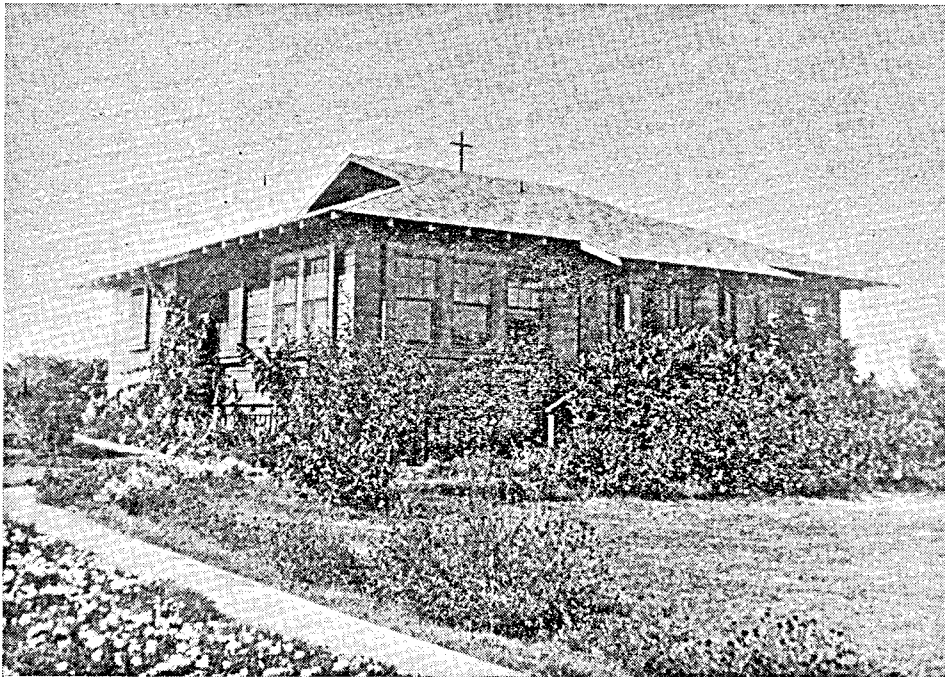
"The General Convention of the Protestant Episcopal Church in the United States of America, acting with full realization of the significance of its proposal, hereby invites the Presbyterian Church in the United States of America to join with it in accepting the following declaration:

"The two Churches, one in the faith of the Lord Jesus Christ, the Incarnate Word of God, recognizing the Holy Scriptures as the supreme rule of faith, accepting the two Sacraments ordained by Christ, and believing that the visible unity of Christ's Church is the will of God, hereby formally declare their purpose to achieve organic union between their respective Churches'."

Urges Framing of Plans

"Upon the basis of these agreements," Bishop Perry said, "it is hoped that the two Churches will take immediate steps toward the framing of plans whereby this end may be achieved."

While the Episcopal Church, as well as other branches of the Anglican communion, has been studying approaches to union with other Christian bodies for many years, it set up first in 1928 the official



THE NURSES' HOME
THE CHAPEL IS IN A REAR WING

C. J. DAY & CO.

GROCCERS

Service and Quality

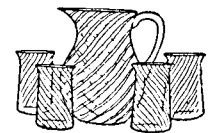
Deliveries to All Parts of the City
1060 FORT ST. - - PHONE 3441

Sanford Optical Co.

A. M. GLOVER, Optometrist

206 Boston Building

Fort Street Honolulu, T. H.
Island Orders Promptly Attended To



Attractive Glassware

NEWEST BOOKS
BRIDGE SUPPLIES

... at ...

Honolulu Paper Co., Ltd.
1045 Bishop Street, Young Bldg.

commission now named the Commission on Approaches to Unity, which has, since that time, held conversations with representatives of the Methodist, Presbyterian, and Lutheran Churches, a list increased this year by inclusion of the Reformed Episcopal Church. The present negotiations with the Presbyterian Church, in the opinion of church leaders, have progressed further than similar contacts with other bodies sympathetically interested.

Relations Intimate In Past

Through the history of the Anglican communion there have been between that body and the Presbyterian system, intimate relations. The present approaches are in the growing spirit of friendliness and community of purpose in Christian life and work.

The action is expected to be brought up for official consideration by the Presbyterians at the next meeting of the General Council of that Church, to be held in Philadelphia on March 1, 1938.—*The Living Church*.



FINDING A RECEIVER

There is a lot of football played in Hawaii, the season never seeming to reach an end. On New Year's afternoon the Rector of St. Clement's and the entire family watched the Huskies from the University of Washington engage the Roaring Rainbows from the University of Hawaii. All the time there was within his consciousness a bit of uneasiness regarding the sermon on the following day as the week had been a trifle difficult.

These two facts probably caused the weird dream that night which he told to his congregation the following morning. It was a nightmarish sort of dream and very real as he stood before his congregation preaching merrily along but could not stop. Faces among the people stood forth showing more and more a deep concern. He looked at his watch but still he could not stop. In desperation he gathered up the sermon into a football and tried to forward pass it to the congregation. The agonizing part of the dream came when he was unable to find a receiver.

Both the rector and the congregation of St. Clement's hope that the truth of this dream, if there is truth in dreams, goes by way of contrariness.

One might become thoughtful and questioning about a parson's ability to pass and a congregation's ability to receive.

HERE AND THERE IN THE DIOCESE

Preaching Mission at Hilo

Father Nelson of Epiphany Mission is to preach an eight-day mission at the Church of the Holy Apostles, Hilo, from January 23rd to 30th.

Grateful Thanks to Many Chronicle Friends

The Hawaiian Church Chronicle wants to tell its many readers that it has never had such a large response as it has received this year in its annual appeal for funds. We have good hopes that the entire running expense for the year may be met, and a slight reduction be made in the deficit of \$250 carried over from the last two or three years. This is a gratifying condition to report, particularly as the editions of the Chronicle for September and October, specially prepared, enlarged, and illustrated, were increased by a thousand copies each for distribution amongst the delegates to General Convention, and the Triennial Meeting of the Woman's Auxiliary. Our monthly issue is now 1,600 copies. We are most grateful to the friends far and near, who have sent contributions for the Chronicle, many of them writing notes of encouragement, indicating the interest in our missionary work maintained by the regular reading of our diocesan paper.

Recent Church Visitors to Honolulu

During December we have welcomed for short visits the Chinese Bishop of Honan, the Rt. Rev. P. Lindel Tsen; the Bishop of the Philippine Islands and Mrs. Mosher; the retired Chaplain-general of the British Forces, the Rt. Rev. Dr. Taylor-Smith, formerly chaplain to Queen Victoria; and the Bishop of Montana, the Rt. Rev. Herbert Fox, with Mrs. Fox and their daughter. Bishop Fox preached a powerful sermon at St. Andrew's Cathedral on December 26th. He was able to visit much of the Church work in Honolulu, as well as to see glimpses of some of our missions on the island of Hawaii as he drove round the island.

This Navy Chaplain Works While Travelling

When our Episcopal Chaplain David L. Quinn was in port on December 8th on the USS Chaumont, he reported tales of incidents pathetic and thrilling, which his

transport had experienced in Shanghai. While on the voyage from Yokohama to Honolulu, Chaplain Quinn baptised no less than 20 persons, mostly adults, about equally divided between members of the ship's company and refugees being conveyed to the United States.

The Living Church Carries News Of Our Work

These three items have appeared in a recent number:

Church Training Given in Hawaiian Public Schools

Honolulu, T. H.—Taking advantage of the territorial law which allows one hour a week for religious instruction in the public schools, the Church in Hawaii is carrying on extensive work with hundreds of children from non-Christian families.

The clergy and other teachers report that they have to concentrate on the most elemental facts of religion, since the pupils are entirely lacking in knowledge of the Bible and the Church.

Eleven Parishes in Honolulu Hold Joint Young People's Meetings

Honolulu, T. H.—The young people's groups of the 11 parishes and missions in Honolulu are holding a joint meeting one Sunday evening each month at a different church.

After a supper the members attend the evening service of the host church, and a social hour follows. In such a cosmopolitan community these gatherings are of the utmost value in fostering a real Christian fellowship.

Army Chaplains Stationed in Hawaii

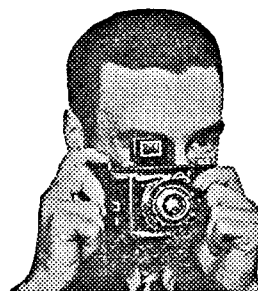
Honolulu, T. H.—After a period of six years without an Episcopal chaplain for the United States Army stationed in Hawaii, two have now been appointed.

The Rev. Luther Miller has been transferred from Fort Leavenworth to Schofield Barracks, and the Rev. Charles W. B. Hill from San Antonio, Texas, to Fort Kamehameha. In the interim Bishop Littell and the Rev. A. H. Stone, headmaster of Iolani School, have been ministering at the Post Chapels.

We presume that our correspondent to

DELIGHTFUL MEMORIES

Keep them forever
in snapshots.
Use a Kodak and
Verichrome Film



EASTMAN KODAK STORES

1059 FORT STREET, AND ON THE
BEACH AT WAIKIKI—2312 KALAKAUA AVE.

HAWAII & SOUTH SEAS CURIO CO.

Largest Pacific Souvenir Store
in the World

1033 Bishop St. Honolulu

Branches: Royal Hawaiian and
Moana Hotels on the Beach at
Waikiki

2385 Kalakaua Ave.

SAM CHING TIRE SHOP

OFFICE PHONE 2265

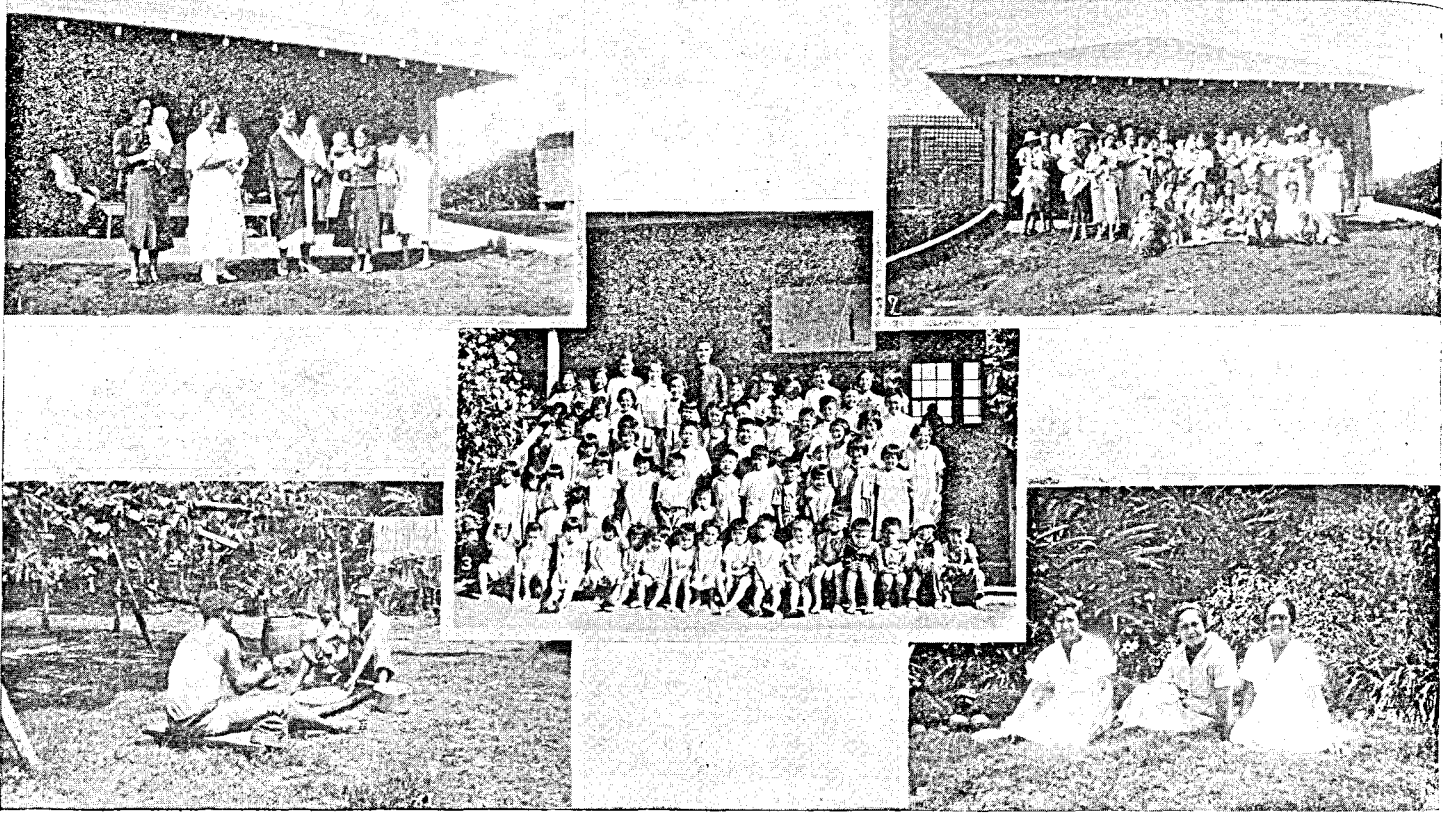
PHILIP AND SAM

245 N. Queen Street and Iwilei Road
Opposite New Market

Expert Vulcanizing & Tire Repairing

On the Island of Molokai

THE FOUR CORNERS ALL REFER TO THE SHINGLE MEMORIAL HOSPITAL



1—Prize-winning mothers at the birthday party who had the heaviest babies in their nationality class. (Left to right), Caucasian, Hawaiian, mixed nationalities, Japanese and Filipino. 2—Some parents and babies at the annual Easter Day party for all babies born the previous year. 3—What a LAYMAN has done at St. Paul's Mission, Maunaloa. Mr. Andrew Otani, layreader, and his Japanese Sunday School. 4—POI-POUNDING, guaranteed to develop arm and shoulder muscles. 5—Three Hawaiian Hospital attendants or 'kokuas' (literally helper, from kokua, to help).

the Living Church, the Rev. Kenneth Perkins, has sent in these items.

What! No Billboards?

A mainland visitor, writing to our morning newspaper, The Advertiser, on December 24th, under the above title, says that he can hardly believe his eyes when he discovers there isn't a billboard in Hawaii.

"Hawaii among all the places in the world has been wise enough—forehanded enough—to save her own beauty for herself and visitors. And who knows how much that one thing is responsible for the enormous vogue of this Paradise of the Pacific? Where it is 'Scenic not signic', where there are surfboards but no signboards; an oasis in the middle of the Pacific Ocean where the billboards cease from troubling and the tourist is at rest!"



MARKET

Clipping from

"The Advertiser—40 Years Ago"

"Rev. Alex. Mackintosh retires as principal of the Royal School, which post he has held for past thirty-six years. The Royal School was founded in 1840 for the native royalty and aristocracy, but in 1851 it was opened to the general public. It has therefore, been one of Hawaii's common schools for fifty-six years."

The Hawaiian Melting Pot

Armine Von Tempski, author of Hawaiian novels, writes in the Los Angeles Times:

"Internationalism . . . To the majority of persons a gauzy dream offered as an impractical panacea for a world screaming with hysterics. In Hawaii—a working actuality!"

BERT G. COVELL
PHOTOGRAPHIC
STUDIO

Near Hawaii Theatre
1116 Bethel Street Phone 4040

"Dozens of languages fill the air. All about you are strange people living cheek by jowl, people with different ways of thinking and living, speaking different languages, worshipping different gods. People who have only two passions in common—hunger and love—and yet who appear to be living in accord with each other."

"—A land where all men, united under one flag, are free and equal before God—slowly taking definite form in the Pacific."



Remember Our Advertisers

ALEXANDER & BALDWIN
Limited

**SUGAR FACTORS
SHIPPING
COMMISSION MERCHANTS
INSURANCE AGENTS**

Offices in Honolulu, San Francisco
and Seattle

NECROLOGY

The Church in Hawaii records with honor the names of three staunch Christian personalities whose deaths occurred during December. Each one is different, revealing varied loyalties to Christ, yet bound together within that common loyalty.

Charles J. Day

Service was the motto of the life of Charles J. Day, whose death came on December 6th in his 74th year. His forty-five years as resident of the Islands shows a variety of religious interests which can hardly be duplicated anywhere. To appreciate in any sense the amount of his lay ministry among the different races of this Island let the bare facts stand forth.

He helped build the Methodist Church at Ewa Plantation, and again at the nearby Pearl City community where he worked among the Hawaiians; for more than thirty years he taught in the Japanese Methodist Sunday School, working also among the young people of the Beretania Chinese Church and acting as a Director of the Korean Christian Institute; he was an early president of the Y. M. C. A. and did religious work at the Aala Park Mission, the Salvation Army, Oahu Prison, Leahi Home, and the Susannah Wesley Home.

All this was in addition to his constructive creation of the grocery concern of C. J. Day and Co., which he started in 1901.

His wife, children and grandchildren, members of St. Andrew's Cathedral, all know that not only the sympathy but the deep respect of the community and Church is with them in their loss.

Mrs. Minnie H. Churchill

St. Clement's in Honolulu was crowded on the afternoon of Saturday, the 11th of December, for the funeral service of Mrs. Minnie H. Churchill. It was her very own children of the spirit who came as well as her fellow parishioners, for she had been principal of the school at Waialua, Oahu, for twenty-six years and how they all loved her!

As teacher for all those years, as President of the St. Clement's Guild and Auxiliary for many years, as faithful worker in many ways, her interest was always in people and they responded with the best that was in them. Let us quote from the Kalendar, the caption being, "The Power of the Spirit".

"The death of Mrs. Minnie H. Churchill last week and funeral service on the after-

noon of Saturday, the 11th, has bound together those of us in the parish who worked with her, knew her winsome charm, and loved her for the rare personality she revealed in every thought and action, into a common bond of sorrow.

"This sorrow is tempered by a truly amazing fact. Few of us have ever known one who possessed such a profound belief in the vitality of the spiritual personality. Those of us who were privileged to be with her in the last days prior to the operation and in the days of weakness following were not surprised when we sensed her joyous spirit with us in the service. She was there as she had said she would be. There was a shiningness within our little Church not caused by just the white vestments and beautiful flowers and overflowing love of the friends who came to honor her.

We have not lost her. We are lonely for her physical presence yet we are re-enforced by her spiritual power. We must rejoice that the spirit is free from bodily pain and able to go about on that conscious and unconscious ministry which here on earth brought strength and comfort to countless men and women and children. We simply thank God for her and resolve to live more fully that happy disciplined Christian life."

Mrs. T. B. Walker

The funeral of Mrs. T. B. Walker, a direct descendent of Hawaiian chiefs and chiefesses, took place at St. Andrew's Cathedral on December 21st. Mrs. Walker, who was in her 75th year, was visiting in California at the time of her death, November 10th.

Mrs. Walker was a daughter of Mr. and Mrs. John A. Cummins, noted Hawaiians of the closing years of the Hawaiian monarchy, her father being an intimate friend of King Kalakaua and of the latter's sister, Queen Liliuokalani. She received her education at St. Andrew's Priory.

Those close to the Cathedral congregation will miss greatly the person of this gentle and gracious spirited member who showed so fully the charm of the real people of the Islands. Her interest in the wide-spread work of the Church was maintained throughout her life.

May peace and growth come to these members of our Christian faith who have advanced to another stage in the adventure of life!

Wherever Christ is needed, there is Missions.

CHRONICLES OF CHRIST CHURCH, KONA

By Mrs. R. V. Woods

On Saturday evening, November 6th, 1937, the Rev. Kenneth O. Miller, Mrs. Miller and the little daughter Charlotte Ann, arrived in Kona at the end of their long journey from Canaan, Connecticut, and took up their residence at the Parsonage. The following morning, Sunday, Mr. Miller conducted the Morning Service at Christ Church and afterwards made the acquaintance of his congregation.

Wednesday Nov. 10th. The Christ Church Guild sponsored a Community reception and tea at the Kona Inn, Kailua, from 4 to 6 as a welcome to the new vicar and his family. In spite of many absentees from the district over fifty Kona residents availed themselves of the opportunity of greeting and being greeted by them. In the midst of a week of dry weather a heavy rain, extending even to the beach, fell in the early part of the afternoon, but this in no way dampened the welcome extended to the newcomers. A gorgeous sunset, the glorious reds and golds of which were reflected in the sea, gave a beautiful end to a happy afternoon.

On Thanksgiving Day Christ Church and Central Kona Church united for the morning service, the Rev. Kenneth Miller and the Rev. Shannon Walker officiating.

On Friday, Dec. 3rd, the Rev. and Mrs. Kenneth Miller were At Home at the parsonage from 4 to 6 P.M. to the Kona Community. A delightful time was spent, and many were the comments made on the "Homey" appearance of the Parsonage in which all were made to feel welcome by the kindly hosts. Dainty refreshments were served amid the tasteful floral decorations and the soft light of many candles.

Over on windward Oahu, in the Hawaiian fishing village of Kahaluu, the mission of St. John's-by-the-Sea celebrates each year the day of St. John the Evangelist. Captain Roberts of the Church Army in charge of this mission reports a very proper remembrance this year of the evangelist for whom the mission is named in the baptism on that day of eleven persons.



Love's

**bread and biscuits
fresh every day**

*Made in Honolulu by
Honolulu men and women*

THE BISHOP'S SCHOOL

Upon the Scripps Foundation. Boarding and day school for girls. Intermediate Grades. Preparation for Eastern Colleges. Caroline Seely Cummins, M.A., Vassar, Headmistress. The Right Rev. W. Bertrand Stevens, President, Board of Trustees.

LA JOLLA, CALIFORNIA

NUUANU FUNERAL PARLORS, Ltd.

David Y. Akana, Prop.

1374 Nuuanu Avenue, near Vineyard St.

Morticians and Funeral Directors

DAY AND NIGHT PHONE 2494

THE EPISCOPAL CHURCH

By George Craig Stewart
Bishop of Chicago

Billy Sunday once assured his hearers that he never attacked the Episcopal Church because his mother had taught him never to speak evil of the dead. Well, the Episcopal Church is very much alive. It is very old, that is true, a part of the great historic Church of the English speaking people, a sharer in the life of that catholic and apostolic Church which derives from the Apostles themselves, but she is bounding with the life of youth, for she is very popular with young men and women who find in her what they like; the reconciliation of authority and freedom. She is organized, but she is democratic. She is part of a great Anglican communion, but she is thoroughly and completely American. She is the inheritor of a great and stately tradition in her liturgical worship, but she is not tied hand and foot with ceremonialism. She is, as always, devoted to scholarship, and never afraid of the truth; and yet she is wary of those who identify novelty with truth and she sees no reason to conclude that what was true and right on Tuesday need necessarily be false and wrong on the following Thursday, just because it is so-to-speak strictly cut-of-date. She does attract to her many persons of rich, cultural background, but she knows no distinction of rich and poor—nor of black and white, be it said, for she has no separate racial episcopate. She is a roomy church, big enough to include clergy and laity of widely diversified schools of thought, but all of them using the same Book of Common Prayer, obeying the same canon law, serving under the same bishops and submitting themselves to the same doctrine, discipline and worship.

"The Watershed of History"

In a world bewildered and beset with madness, the Christian moves not as one apart, nor as one washing his hands of responsibilities. He recognizes his share of responsibility for the situation as it is. All our maladjustments, all our strifes industrially, socially, politically, nationally and internationally—arise from sin, both individual and group sin; from unwillingness to follow even the light we have, from rebellion against the will of God registered in our consciences and convincingly and convictingly brought home to us by that Figure which H. G. Wells has called the Watershed of History, and Whom we all recognize as the last word in divine manhood. To Jesus Christ the Episcopal Church is committed, and

with Jesus Christ the Episcopal Church is in love. She acknowledges Him to be the head of the Church. She recognizes the Church as his mythical body and she, by His help, is striving to actualize this faith in the lives of her own communicants and through them to leaven society with His Spirit. And in this effort she humbly and earnestly seeks so to cooperate with all Christian people—so far as is possible, and with all religious non-Christians, so far as possible—so as to hasten the coming of that Kingdom of righteousness and justice and peace for which all Christendom prays.—*The Witness*.

ACKNOWLEDGEMENTS

Acknowledgement is made here of gifts and subscriptions to the Hawaiian Church Chronicle from November 28th to December 30th. Where the amount is not mentioned, it is \$1.00.

Miss Anna L. George, \$5.00; Mrs. John S. Littell; Mrs. Shannon Walker, \$2.00; Mrs. Zipporah B. Douglas; Miss Katherine Banning, \$5.00; Mrs. E. S. Barry; Miss M. H. Shortlidge, \$5.00; Mr. H. W. M. Mist, \$2.00; Chaplain J. Burt Webster; Mr. Henry L. Mickle, \$5.00; Major Crittenden Van Wyck, \$2.00; Miss Elizabeth T. Crehore, \$5.00; Mrs. H. Alton Rogers; Rear Admiral F. T. Arms, \$2.00; Bishop's Discretionary Fund, \$75.00; Rev. Alex C. Groome, \$5.00; Mr. Henry Smith, \$4.00; Dr. Elton C. Littell, \$3.00; Miss Edna R. Gardiner, \$2.00; Mrs. Henry Hill Pierce; Mrs. Mortimer Matthews, \$5.00; Mrs. J. H. Benedict; Rev. Wallace E. Conkling; Mrs. George Forrester Johnston, \$2.00.

Mr. W. Barnette Smith, \$2.00; Miss Harriet E. Devoe, \$2.00; Rev. William A. R. Goodwin; Miss Mary J. Mitchell; Miss Minnie H. Hurley; Dr. G. E. Robertson, \$2.00; Mr. Charles Stewart Butler; Mrs. D. K. Ottman; Mrs. H. A. Taylor, \$2.00; Mrs. Mitsu Nagakawa, \$2.00; Mrs. Mary Davis Wall, \$2.00; Miss Martha L. Eder; Mrs. Bessie Dale; Miss Edith M. Phillips; Mrs. Arthur L. Fuller, \$2.00; Rev. P. R. Stockman; Mrs. Harvey L. Freeland; Mr. Robbins B. Anderson, \$10.00; Mr. and Mrs. William Littlejohn, \$5.00; Miss M. C. Ladd, \$2.00; Mrs. Grover Batten, \$5.00; St. Stephen's Woman's Auxiliary, \$5.00; Miss Frances Gillett; Mrs. R. B. Anderson, \$2.00; St. Peter's Woman's Auxiliary, \$5.00; Rev. O. W. Muray; Miss Lillie L. Layng; Miss Angelica Reese.

Mr. William F. Smarz, \$3.00; Mrs. Emma Danford, \$5.00; Mr. Robert Asato,

\$2.00; Mrs. J. B. Corstorphine, \$5.00; Mrs. W. H. Carter, \$2.00; Mrs. Frederick Bringham, \$2.00; Mrs. Eva T. Harrington; Mrs. Edwin J. Randall, \$2.00; The Misses Skinker, \$3.00; Miss J. M. Barnard; Mrs. W. H. Baird; Miss Francina Maxwell; Joseph Yap; Mrs. Robert B. Rayner; Mrs. William E. Linton, \$5.00; Mrs. John Morley, \$2.00; Miss Maud I. Burrows; Mrs. V. H. Yap; Chaplain Charles W. B. Hill, \$5.00.

Holy Trinity Mission, \$3.00; Mr. S. Y. Char; Mrs. E. R. Hose; Mrs. V. S. Mentch; Anonymous; Endowment Income, \$53; Mr. H. Streubeck, \$2.00; the Church School children of Good Samaritan Mission, \$3.00; Mrs. W. S. Lapham, \$5.00; Capt. Harold W. Smith, \$2.00; Thank Offering for child's baptism, \$2.00; Miss Agnes Helen Davis; Mrs. Benjamin Marx, \$5.00; Miss Alice Turner, \$2.00; Anonymous, \$8.00; "A Friend", \$5.00; Anonymous, \$2.00; St. Andrew's Cathedral Parish, \$100; "The Bishop", \$7.00; Miss Jane Nowell.

The treasurer of the Hawaiian Church Chronicle, and all others connected with its business management, would like to thank the many readers who have written in during the year, telling of their enjoyment of this little magazine. We cannot answer them, as we have neither the time nor the postage. But it warms our hearts to read your letters. May you continue to take pleasure in reading the Chronicle throughout this New Year.

COMMUNISM PREFERABLE TO FASCISM, SAYS FR. FLETCHER

Madison, Wis.—"Should democracy fail, the class dictatorship of Communism is preferable to the Fascist dictatorship of an individual," declared the Rev. Joseph Fletcher of Cincinnati, director of the diocesan School of Christian Sociology held at St. Francis' House, student center at the University of Wisconsin, from November 29th through December 1st.

The children of St. Andrew's Cathedral sent, early in December, a grand box of Christmas presents to the various schools under the direction of Archdeacon Walker on the Island of Hawaii.

Williams Mortuary, Ltd.

To be served by
"WILLIAMS"

is a mark of distinction.

Personal Attention By An
Expert Staff of Assistants

Twenty-Four Hour Service

1076 S. Beretania Phone 3524

BISHOP TRUST CO., LTD.

HONOLULU

Trusts, Executors and Administrators

Real Estate, Rentals, Insurance, Safe Deposit Vaults

CHINA RELIEF FUND

United Volunteer Offering from the Diocese of Honolulu

Last Sunday in January

Envelopes will be in the hands of every member of the Church in Hawaii in ample time for the volunteer outpouring of our love for our Christian brethren in China.

The clergy will receive these envelopes by the middle of this month.

Every cent of this \$300,000.00 offering asked from the whole Church goes toward direct relief of our fellow Christians.

Let the share of Hawaii indicate our understanding and sympathy.

CONSECRATION OF THE BISHOP OF SHANGHAI

In spite of the turmoil in Shanghai, the Rev. William Payne Roberts was consecrated Bishop in that city on St. Andrew's Day, November 30th. Bishops Frank Norris, of the diocese of North China, Frederick R. Graves, retiring Bishop of Shanghai, and T. S. Sing, assistant Bishop of Chekiang, were the consecrators. Bishop Roberts is the 6th bishop of the missionary district of Shanghai. An editorial from the Living Church of November 20th, 1937, expresses the pardonable pride which Christians may feel in our missionaries during the present war in China. We quote the article in full:

War and Missions

There is one fact in connection with the war in China of which American Churchmen may well be proud. In the midst of battle and sudden death the missionaries of our Church have continued at their posts ministering to the sick, the injured, and the homeless, burying the dead, preaching, teaching and living the Christian religion.

It is significant that in the midst of the siege of Shanghai, General Convention elected a new Bishop to that See. It is still more significant that neither the Bishop-elect nor the Bishop whom he was elected

to succeed was in Cincinnati, but both were in China attending to their duties despite the gravest personal danger. The consecration of the new Bishop in war-torn Shanghai, November 30th, will be effective notice to the world that the work of Christian missions will continue regardless of strife and battle.

The attack upon St. Andrew's Hospital, Wusih, gave further evidence of the courage of our missionaries. Despite the killing of two Chinese members of the staff and injury to others, the five American doctors and nurses working there announced their intention to continue with their ministry of healing as long as their lives were spared to do so. All honor to these brave medical missionaries!

Whatever may be the outcome of the war in China, the American Church is proud of its missionary heroes who are continuing at their posts and giving their best to the service of Christ and their fellowmen regardless of their own peril. Of such stuff saints and martyrs are made.

If Convocation is to discuss with intelligence the raising of an added thousand dollars for the National Council quota, which was voluntarily assumed by our delegates at General Convention, it will be necessary for the various annual meetings to have this topic on their agendas.

CONVOCATION WEEK FEBRUARY 18th TO 23rd, 1938

Friday, February 18th, 8 p.m.—Devotional Service in Parke Memorial Chapel. 8:45—Opening session of Convocation for Organization, Tenney Memorial Hall.

Saturday, February 19th, 7 a.m.—Convocation Corporate Communion. 9 a.m.—2nd Session of Convocation in Tenney Memorial Hall.

Sunday, February 20th—Special Services, morning and evening. Afternoon, Annual Meeting of the Young People's Fellowship.

Monday, February 21st—Clergy Day.

Tuesday, February 22nd—Woman's Auxiliary Day.

Wednesday, February 23rd—Morning, Educational Conference of the Woman's Auxiliary. Evening, Church Army Night.

The full program will be circulated in a special folder.

There will be a Retreat for the clergy and Church Army evangelists at Camp Harold Erdman, Mokuleia, beginning on Wednesday night, February 16th, and ending on Friday morning, the 18th. The conductor will be the Rev. Charles W. Nelson, vicar of Epiphany Mission, Honolulu.

Christ Church, Kona, Island of Hawaii, cleared up all their apportionments at the time of the Christmas offering. Under the newly arrived Vicar, the Rev. Kenneth Miller, the congregations not only for Christmas but also for normal Sundays are showing vast improvement. It is a historic parish with a past and present courage quite equal to the present fine leadership.



PINEAPPLES: The 1937 crop has reached the record output of 39,559,114 cases, reported by Hawaiian Pines alone.

INSURANCE

Liability, Accident, Fire, Automobile, Marine and Bonding

TRAVEL and SHIPPING

To the Orient, Across Canada, To Europe
Special All Expense European Tours

THEO. H. DAVIES & COMPANY, LIMITED
SHIPPING AND INSURANCE AGENTS

*Are you familiar with the
advantages of the*

All Gas Kitchen?

If not, it will be to your
interest to consult us

Honolulu Gas Company



EPIPHANY CHURCH PAINTED AND REMODELLED

The painting of the interior of the Mission Church of the Epiphany, which was begun early in November, has been finished and has increased the illumination due to the lighter color of the walls.

During Thanksgiving week, the organ and choir stalls were moved from the front of the church to the back. This move will allow the choir master greater freedom in conducting the choir during the services.

In the original lay-out of the church the sanctuary was so small that it has been difficult for both priest and servers to perform their duties properly. The removal of the choir stalls from the front of the nave to the back has permitted the enlarging of the sanctuary. The floor has been cleaned, stained and varnished and the change has added greatly to the appearance of the Mission Church.

The present location of the choir is only temporary. It is hoped that ways and means

will be found whereby the much needed choir loft may be built for the proper care of the choir. The cost of this proposed improvement will be somewhat less than \$500.00. It is also hoped that a pulpit may be built against the wall on the gospel side of the Church at the altar rail. The building of the choir loft will increase the seating capacity of the little church to the extent that we shall be able to seat about

forty more people. This change will remove the necessity for extending the back wall of the church which would cost about \$3000.00.

SLUM CLEARANCE SITE SELECTED

Site for the first project in Honolulu's proposed \$2,000,000 slums elimination program was selected Monday afternoon at a joint meeting of the Board of Hawaii Housing Authority and the city planning commission.

The model, low cost housing experiment will be undertaken in an area between Liha St. and Pua Lane and King and Vineyard Sts.

Living in this small area are 2,500 persons, according to a survey conducted by H. A. R. Austin, engineer for the city who is preparing plans for the federal housing project.

He said 597 families live in the congested district. The average room rent per month for the district is \$3.85.—*Star-Bulletin*, Dec. 7th.

The youngsters of St. Clement's, Honolulu, gave one hundred and twenty-five presents through their Manger Service at Christmas time. These go to be distributed throughout the year to sick children.

CELLOPHANE-WRAPPED

ASK YOUR GROCER

for the "Cello"

1-lb. carton of Mayflower

Kona Coffee



As An All Year-Round Dessert

Serve



HO-MIN

The Better Ice Cream

100% "HO-MIN DUSTRY"

Service Cold Storage
Company, Ltd.

919 KEKAULIKE STREET
Phones 5796 and 5797

FROM OUR CANDIDATE FOR HOLY ORDERS, AT SEABURY-WESTERN SEMI- NARY, EVANSTON, ILLINOIS

James Nakamura, graduate of Iolani School and of the University of Hawaii, now in his first year at the Seminary writes:

"The Juniors were given matriculation examination on the contents of the English Bible on November 15th. We never took anything so seriously as we did this examination. Of course, it was only natural, because it meant whether we will remain in the Seminary or be packing our grips to move out of the Seminary. Our efforts were amply rewarded, however, and we all matriculated. We were duly admitted matriculants of Seabury-Western Seminary on the 17th of November at a very impressive Evensong Service.

To date, I have had three invitations to speak. On the 14th of November, I was invited to take part in the Missionary Service held at St. Matthew's Church, Evanston, at its regular eleven o'clock Morning Service. I was given ten minutes to speak on "What Christianity meant to me". There was a very large turnout; every pew in the church, even those in the balcony, was occupied. It was indeed very encouraging to have this warm reception from the members of St. Matthew's Church. That same evening, I went to St. Matthew's again and spoke to the Young People's Group on the Mission work in Hawaii. It was very gratifying to see those young boys and girls listening to me so attentively.

The New Rector "Re-Educates the People"

On Monday evening, November 15, I was cornered by Archdeacon Deis of Chicago, who happened to be visiting the Seminary, to accept his invitation to speak before the congregation at Kankakee Mission on the following night. Try as I would, but he would not take "no" for an answer, so I finally had to give in and agree to go with him. But then, I did not know that this Kankakee Mission was a hundred miles south of Evanston. I in turn invited, at the request of Archdeacon, a Chinese boy who is boarding at the Seminary. Archdeacon Deis was particularly anxious to get

us two who are from the oversea mission field, because this particular mission members were nurtured for years by a Rector who was much opposed to overseas mission work. Now that a new Rector is taking over the Mission, Archdeacon and he are trying to re-educate the people there. This was the first of the series of three meetings they had planned, and we were to speak on the mission work in our respective countries. I spoke in particular on the general attitudes of second generation Japanese toward religion and on the problems of missionary work among the Japanese community in Hawaii. There was a turnout of about two hundred and we were made to feel quite at home among them. I thoroughly enjoyed speaking to this group, although it was a miserably long and cold drive out and back.

So Much To Be Thankful For

Several boys and I were invited to Dean and Mrs. Grant's for our Thanksgiving Day dinner and we spent a most pleasant afternoon. I had so much to be thankful for that it was a real thanksgiving day to me.

About a week ago, we had our first snow-fall—about an inch, and I felt quite thrilled. It has been pretty cold lately, but since I was told it is far from being really cold, I am putting on my best front and making myself believe I really enjoy this "invigorating weather". But confidentially, I could enjoy the Hawaiian sunshine much better than this Evanston wind".

How about the Chronicle Dollar?

CITY TRANSFER COMPANY LIMITED

Baggage, Furniture and Piano
Moving-Shipping-Storage
Fumigating

Agents All Over the World

TELEPHONES 1281-3579
702 Fort Street, Malolo Dock
Honolulu, T. H.

In these times few persons can afford to pay out unnecessarily several hundred or several thousand dollars. There is only one way to avoid the costliness of accidents—carry Complete Automobile insurance on your car. Then, whatever happens, you are protected.

C. BREWER AND COMPANY, LIMITED

Insurance Department

Phone 6261

Honolulu

JOHN DOMINIQUE LA MOTHE— FOURTH BISHOP OF HONOLULU

By Susan Fountain, Author

It is with real pleasure that we announce the forthcoming publication of the sketch of Bishop La Mothe's life and episcopate. Issued as a special part of the 75th anniversary of the arrival of the first Bishop in the Hawaiian Islands, Thomas Nettleship Staley, in 1862, it brings the history of our Communion in the Islands down to the year 1928 when Bishop La Mothe died. Miss Fountain has done a beautiful piece of work. She has received assistance from many sources, chiefly close friends of the Bishop. She has portrayed skilfully and sympathetically the life and work of the fourth bishop of Honolulu in such a rounded manner that the reader feels personal acquaintance and understanding of the Bishop. The booklet, for it is no more than that, brings out in contrast romantic incidents and humdrum duties faithfully performed.

The sketch is now in the press, and should be ready by Convocation time. It will be issued with board binding, and contains a three-quarter portrait of Bishop La Mothe in his episcopal robes. One thousand copies will be printed. It is expected that the cost of printing will be chiefly met by personal gifts from friends. This will enable complimentary copies to be circulated widely throughout the Church on the mainland. Other expenses connected with

Enjoy

**BETTER LIGHT
BETTER SIGHT**

with

**WESTINGHOUSE
MAZDA LAMPS**



The HAWAIIAN ELECTRIC Co., Ltd.
Palace Square Telephone 3431

the publication will be covered by the small price of fifty cents which will be charged for each copy, postpaid. Orders may be sent at any time either to the Bishop's Office or to the Treasurer's Office, Queen Emma Square, Honolulu.

A LETTER FROM WEST KAUAI

Dear Mr. Editor:

Twice a year my rule of "silence" is off and I break into print—Christmas and Easter.

Christmas in Waimea-Kekaha started on December 17th when the Churches of Waimea-Kekaha put on the Christmas Pageant in the Waimea Community Hall which was enjoyed by about 250 people. Next came the Service and Tree for the Church School children on the afternoon of Dec. 22nd. The next thing on the programme was something new. Troop No. 61 of Waimea, B.S.A., of which I am the Scoutmaster, planned a Christmas party and programme for Dec. 23rd, and the Chairman of the Programme Committee asked me to tell the Christmas Story as part of the programme. That pleased me very much. And then the climax of it all—the glorious service of Hymns and Scripture readings in the Chapel in Kekaha, starting at 11:30 P.M. Dec. 24th and followed by the Holy Communion just after mid-night. And yet again, on Dec. 25th, at 10:00 A.M., a Service of Prayer, Hymns and Scripture readings in the Waimea Church. These services were well attended and those who worshipped with us, caught the Christmas Spirit, which is the Spirit of the Christ—you could see it in their faces. Let us hope that we are a wee spec better because His Spirit had us for a day.

With best wishes to you and yours for the New Year.

Sincerely,

J. L. MARTIN.

Waimea, Kauai, T. H.

Dec. 28, 1937.

THE IDEAL FOREIGN MINISTER

The work and policy of the Foreign Minister must be guided wholly by the desire to use every means in his power to avoid giving the Minister of War anything to do.

—President Benes of Czechoslovakia.

Bring a voluntary offering for the China Relief Fund on the last Sunday in January. Our diocese must contribute at least \$800.00 if the whole Church is to make up the amount needed. Many there have lost all—we can each one give something.

The old Rectory of St. Clement's was removed last week. There is a certain sadness as we see old and beloved things giving place to needed new construction but it seems the way of progress.

THE APPORTIONMENT FOR MISSIONS AND THE ASSESSMENT FOR CONVOCAATION EXPENSES FOR THE VARIOUS PARISHES AND MISSIONS

	For Quota and District Missions	Received from Parish or Mission	Received from Sunday School and Y. P. F.	Received from Woman's Auxiliary and Junior Auxiliary	Total Receipts	Convocation Assessment	Paid	Episcopal Endowment
OAHU								
St. Andrew's Cath. Parish.....	\$2,200.00	\$1,640.00	\$360.00	\$200.00	\$2,200.00	\$350.00	\$350.00	\$ 312
St. Andrew's Haw'n Cong.....	500.00	319.64	125.25	50.00	494.89	52.50	52.50	
St. Peter's Church.....	725.00	499.54	225.46	20.00	745.00	29.25	29.25	3.4
St. Clement's Parish.....	620.00	560.54	90.01	70.00	720.55	52.50	52.50	13.3
St. Elizabeth's Mission.....	350.00	234.40	85.60	30.00	350.00	29.25	29.25	9.2
St. Luke's Mission.....	120.00	7.13	111.87	1.00	120.00	11.75	9.00	5
Holy Trinity Mission.....	180.00	55.00	125.00	5.00	185.00	15.00	15.00	
Epiphany Mission.....	150.00		58.54	20.00	78.54	17.50		3.4
Good Samaritan Mission.....	35.00	10.80	24.20	1.00	36.00	2.00	2.00	
St. Mark's Mission.....	100.00	50.00	50.00		100.00	11.75	11.75	2.4
St. Mary's Mission.....	100.00	18.75	81.27		100.02	11.75	11.75	3.0
St. Alban's Chapel (Iolani)....	275.00		275.00		275.00	11.75	11.75	
St. John's-by-the-Sea.....	60.00	30.00	25.00	5.00	60.00	2.00	2.00	3.0
St. Stephen's-in-the-Fields.....	50.00	20.00	29.35	1.00	50.35	2.00		2.2
Moanalua Sunday School.....	12.00		12.54		12.54	2.00	2.00	3.3
Schofield Epis. Sun. School....	150.00		22.27		22.27	1.00		10.0
St. Andrew's Priory.....	240.00		261.28		261.28	2.00	2.00	
Cathedral English School.....	60.00		60.00		60.00	1.00		
Young People's Fellowship....	30.00	15.00			15.00	1.00	1.00	
MAUI								
Good Shepherd, Wailuku.....	360.00		46.00	25.00	71.00	29.25		
Holy Innocents', Lahaina.....	216.00	216.00			216.00	17.50	17.50	4.0
St. John's, Kula.....	48.00	45.00		3.00	48.00	7.00	7.00	
HAWAII								
Holy Apostles', Hilo.....	180.00	126.90	28.10	25.00	180.00	22.25	22.25	9.0
St. Augustine's, Kohala.....	125.00	56.30	31.40	26.00	113.70	11.75	11.75	2.5
St. Augustine's (Korean).....	25.00	20.29	4.71		25.00	6.00	6.00	
St. Paul's, Makapala.....	110.00	75.19	34.81		110.00	6.00	6.00	2.0
St. James', Kamuela.....	50.00	40.90	9.10		50.00	6.00	6.00	
St. Columba's, Paauilo.....	150.00	150.00			150.00	11.75	11.75	2.5
Christ Church, Kona.....	190.00	33.00	12.33	75.00	120.33	29.75		13.9
St. James', Papaaloa.....	210.00	205.00		5.00	210.00	11.75	11.75	
KAUAI								
All Saints', Kapaa.....	240.00	170.00	50.00	20.00	240.00	25.00	25.00	12.0
West Kauai Mission.....	80.00	45.87		5.00	50.87	6.00	6.00	2.0
Emmanuel Mission, Elele.....	30.00	30.00			30.00	6.00	6.00	
MOLOKAI								
St. Paul's, Mauna Loa.....	24.00		24.00		24.00	2.00	2.00	1.0
Holy Cross, Hoolehua.....	35.00	10.15		5.00	15.15	2.00	2.00	
TOTALS	\$8,030.00	\$4,685.40	\$2,263.09	\$592.00	\$7,540.49	\$806.00	\$722.75	\$134.6

All monies contributed for missions should be sent to T. J. Hollander, Treasurer, Bishop's office, Emma Square, Honolulu, as soon as possible.